

FORGINGS.

S. S. Nos 215-8.

1/9/19.

SCALE $\frac{1}{2}" = 1 \text{ FOOT}$

TO LLOYDS' SURVEY.

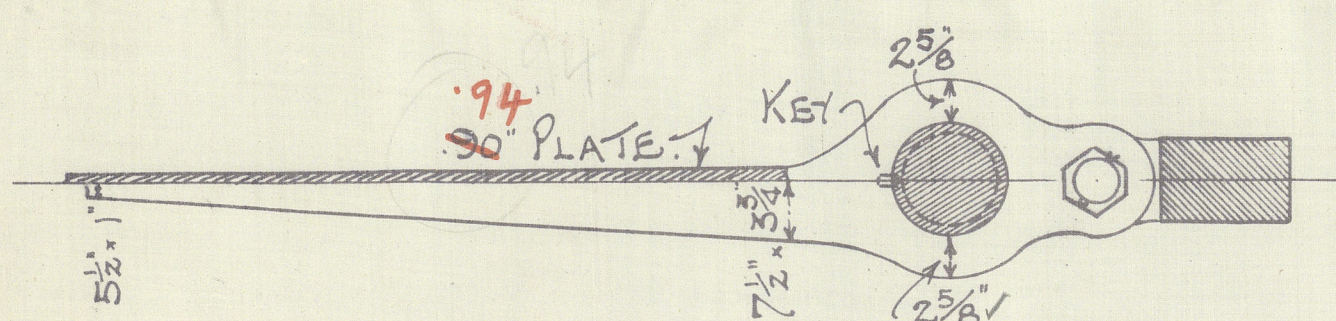
$A = 87 \text{ Sq. FT.}$

$$D = 2.66' \text{ FT.}$$
$$A \times D = 231$$

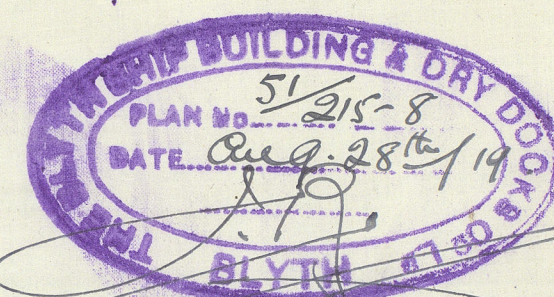
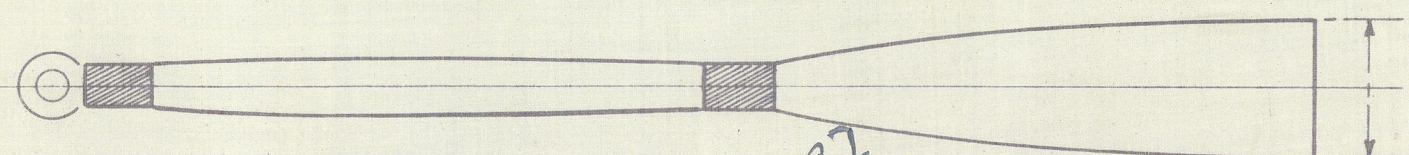
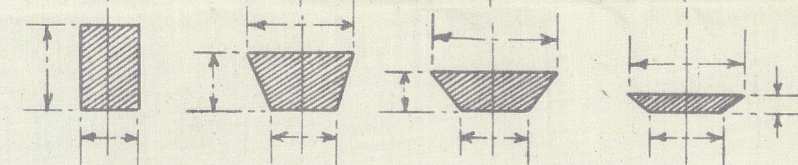
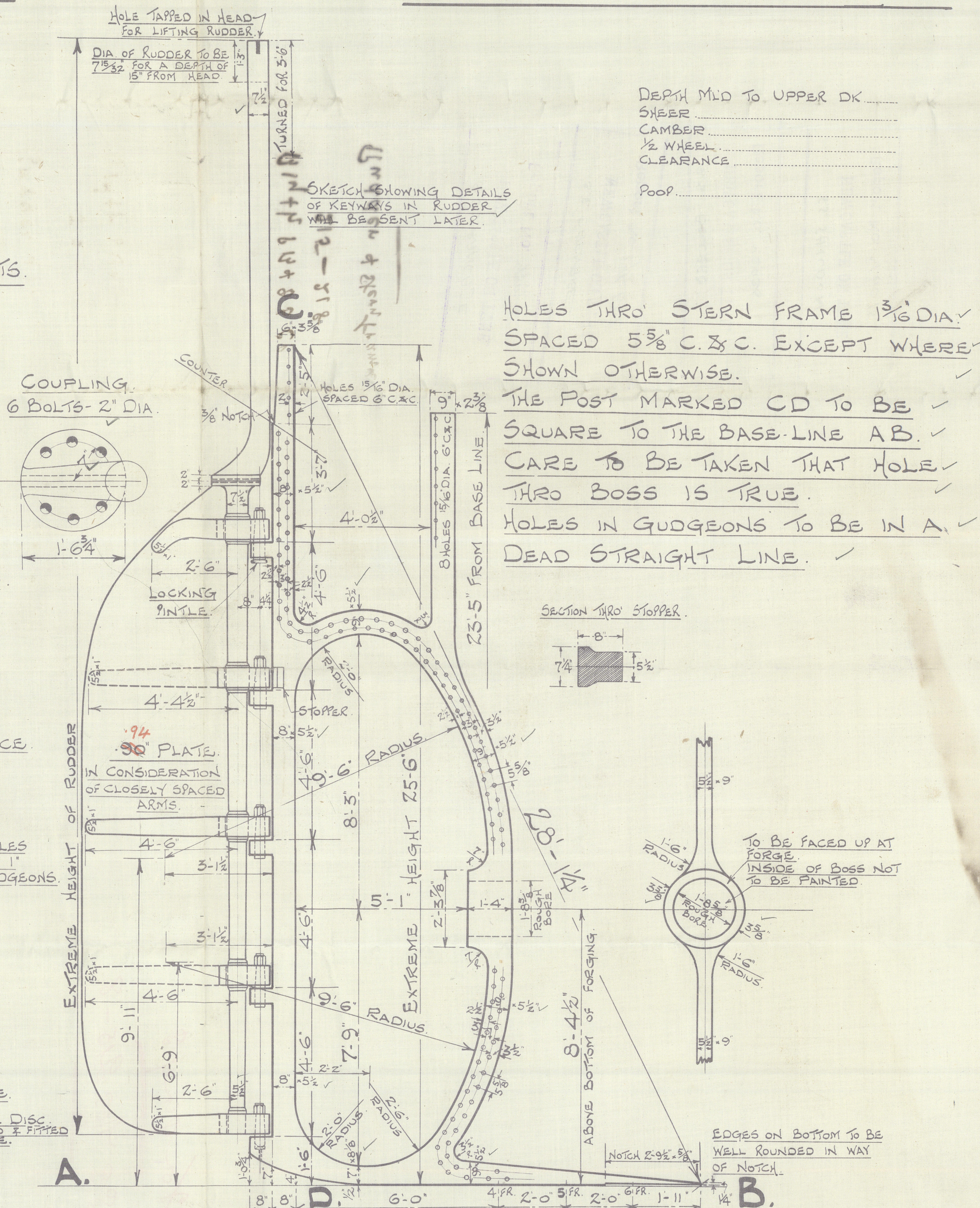
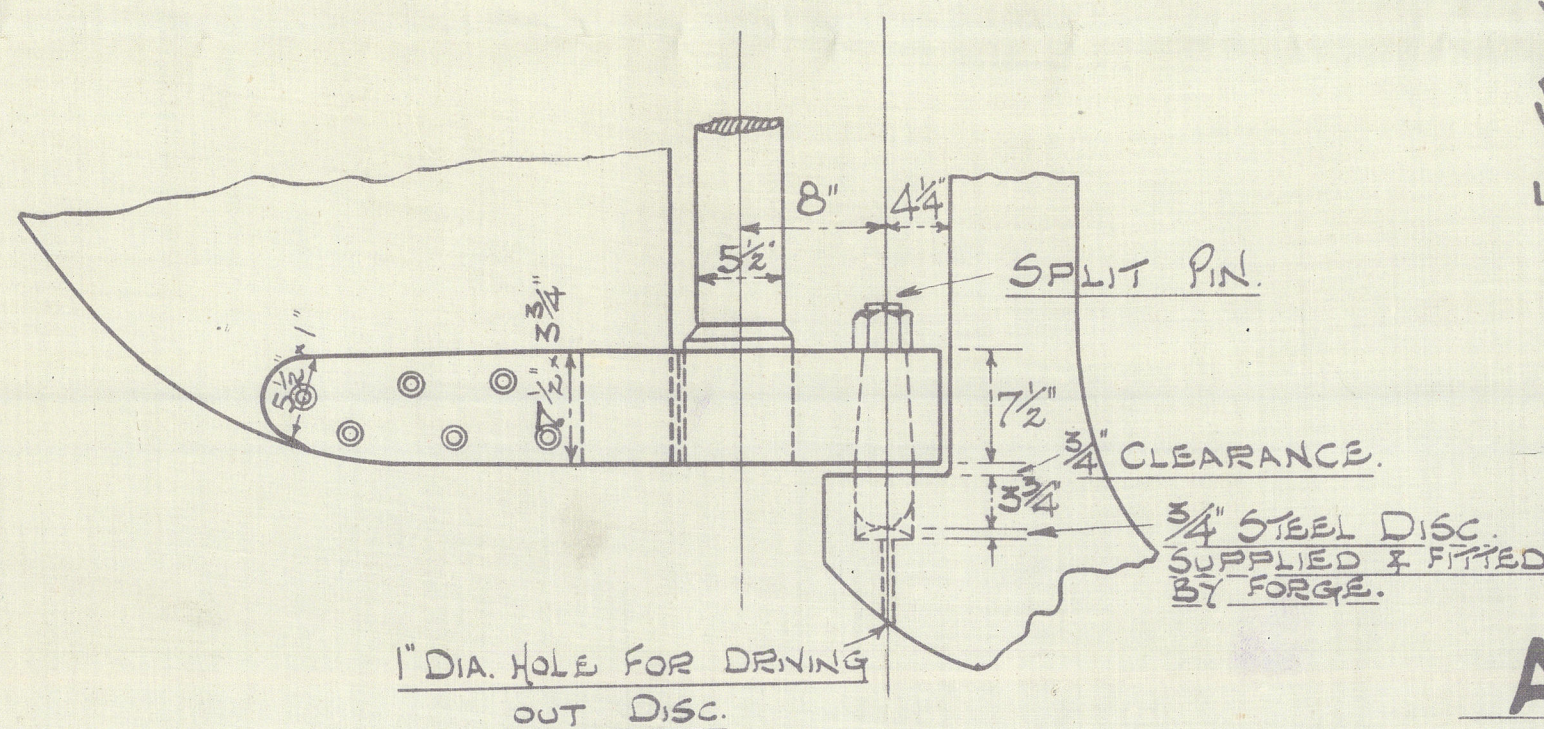
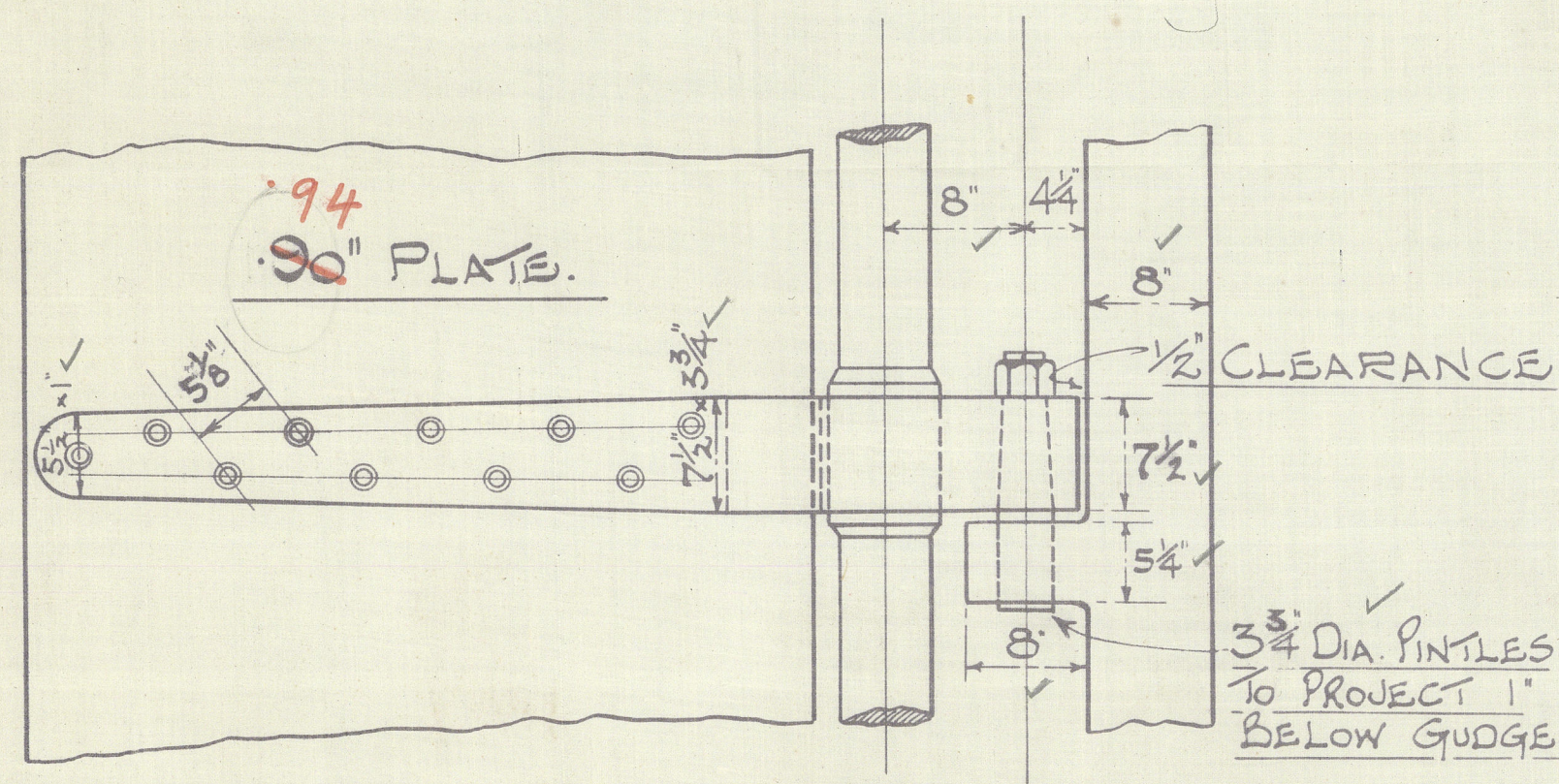
SPEED NOT EXCEEDING $10\frac{3}{4}$ KNOTS.

DETAILS.

SCALE 1" = 1 FOOT.



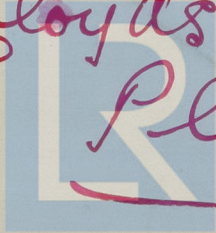
HOLES THRO' RUDDER ARMS $1\frac{3}{16}$ " DIA.
SPACED $5\frac{1}{8}$ " C.X.C.; COUNTERSUNK ON OUTSIDE



Forqing S.

S.S. Nos. 215-8

Lloyd's Approved
Plan



Lloyd's Register
Foundation

Blyth P B & Co

215-218

Rudder & Stern Frame

S.S. FRANCAISE.

NEWCASTLE ON TYNE.

Report No. 43927.

S.S. "CAENNAISE"

NEWCASTLE ON TYNE.

Report No. 44626.

S.S. "BELLBRO."

NEWCASTLE ON TYNE.

Report No. 44935

S.S. "SHILDON"

NEWCASTLE ON TYNE.

Report No. 46015



© 2020

Lloyd's Register
Foundation

002279-002288-0003