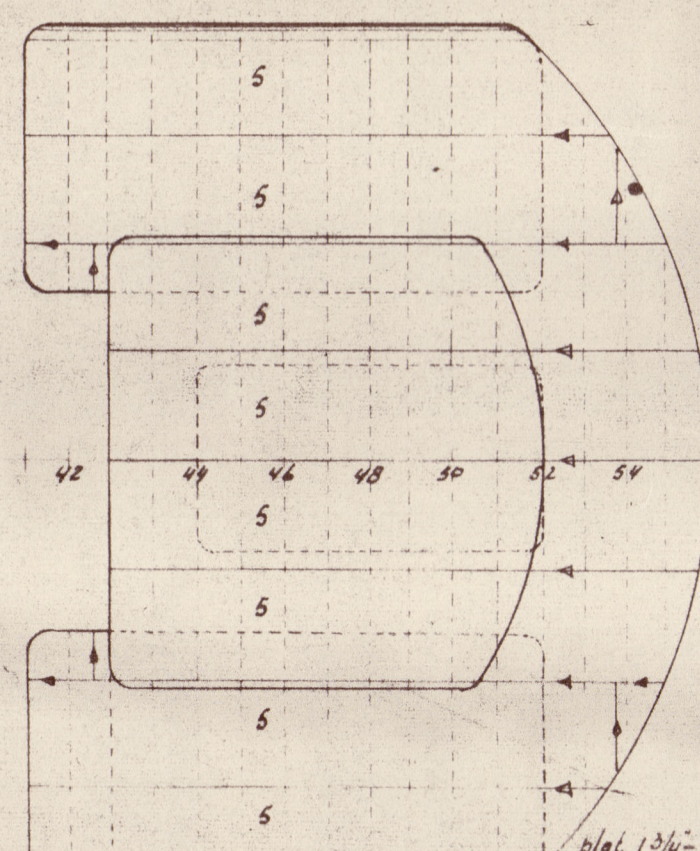


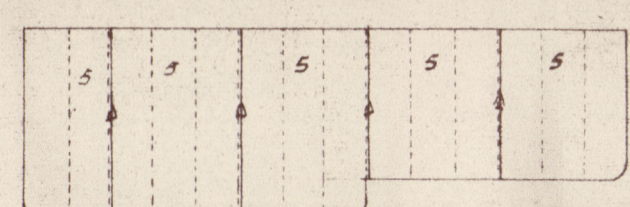
Commando brugdek  
Navigating bridge

Top dekhui =  
" deckhouse

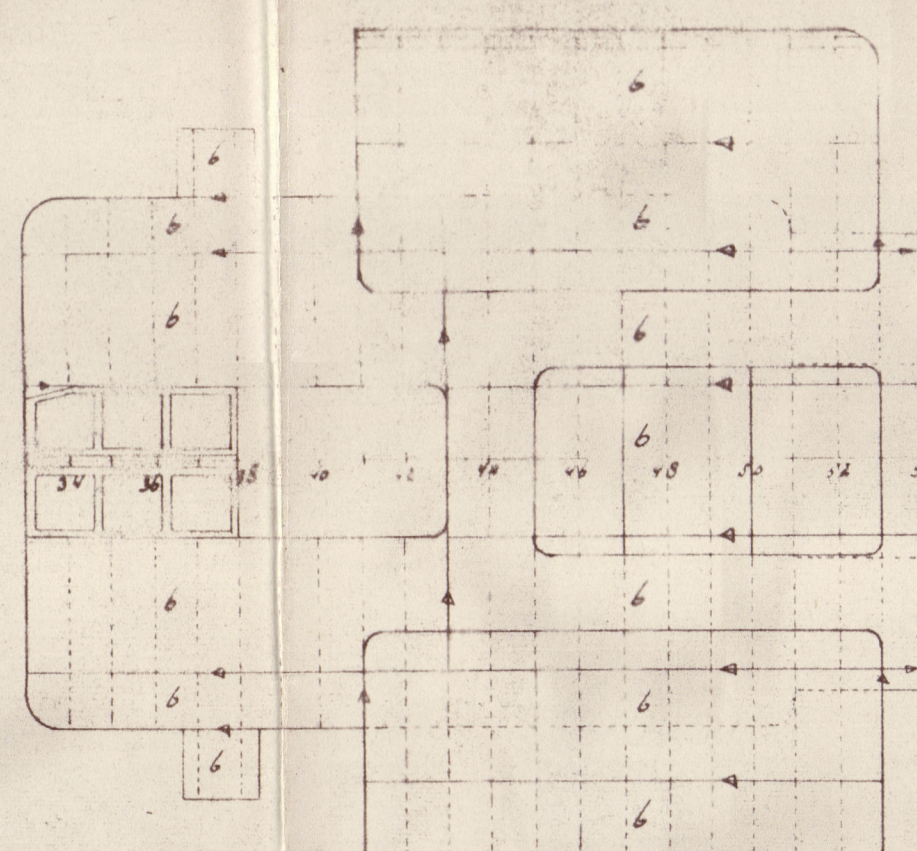
Sloependeck  
Boatdeck.



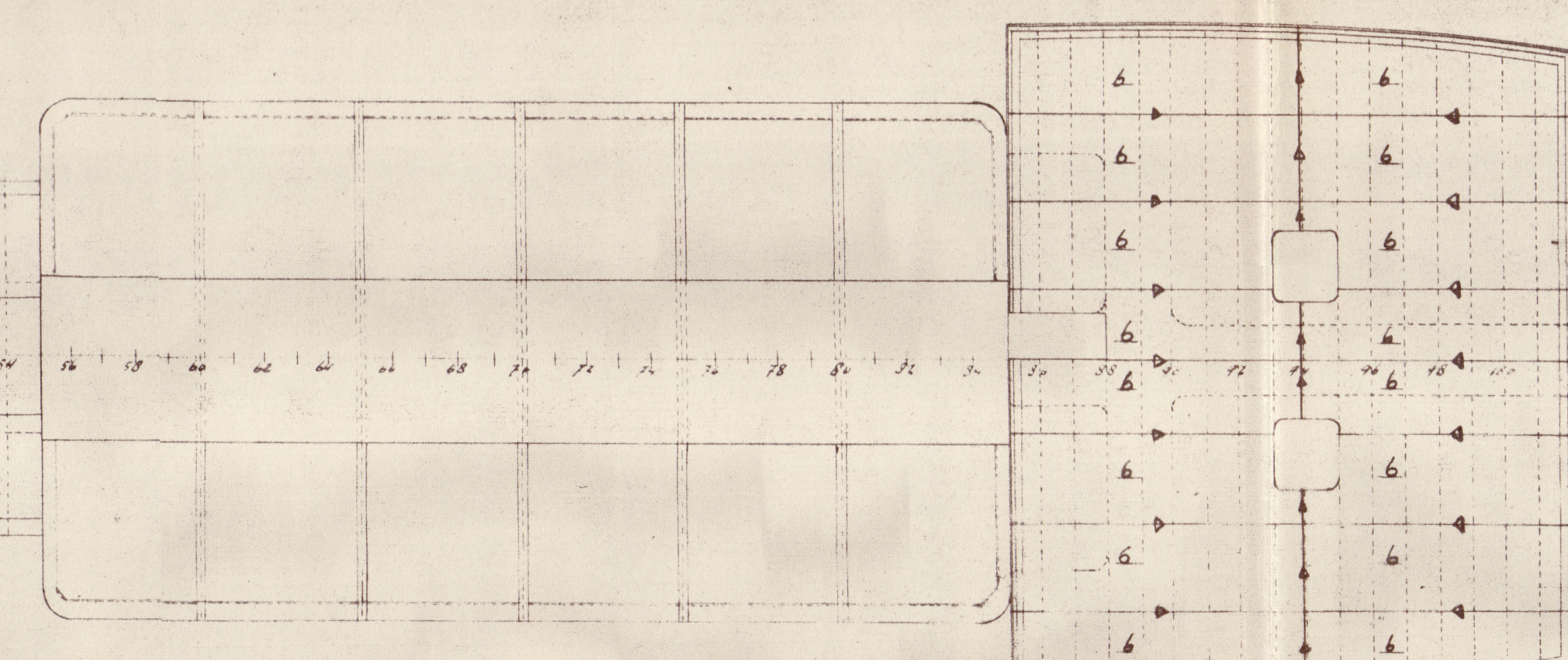
Dekbalken  $1\frac{3}{4}$  - 2 $\frac{1}{2}$  - 28  
Stijlen buitenwand  $1\frac{3}{4}$  - 2 $\frac{1}{2}$  - 28  
Stijlen binnenwand  $1\frac{3}{4}$  - 2 $\frac{1}{2}$  - 24



Debbalken 3 - 2 - 28

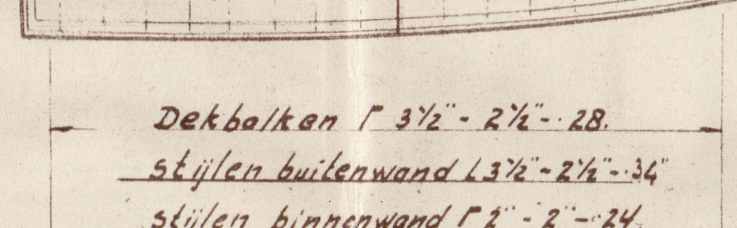


De balken  $1\frac{3}{4}$  -  $2\frac{1}{2}$  - 28

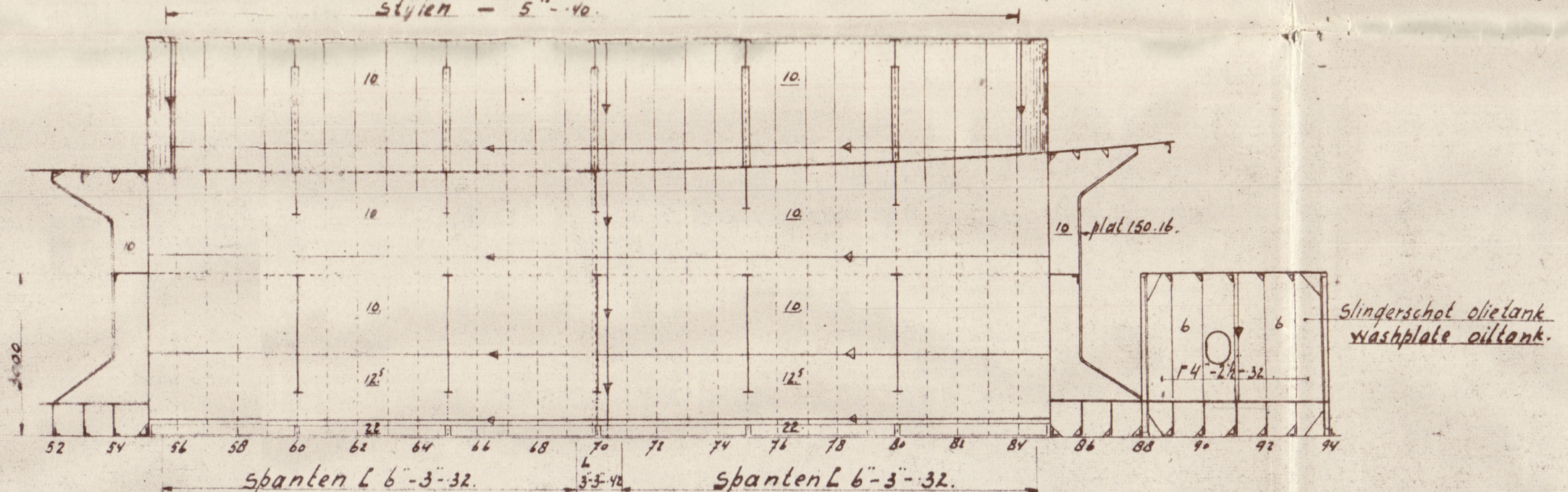


L 2 1/2 - 2 1/2 - 28  
plate 1 3/4 - 36

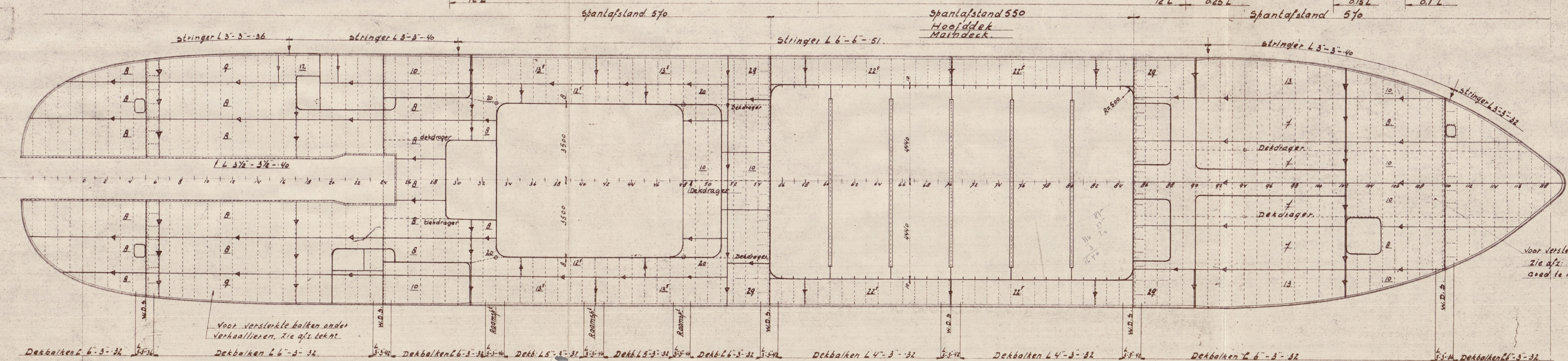
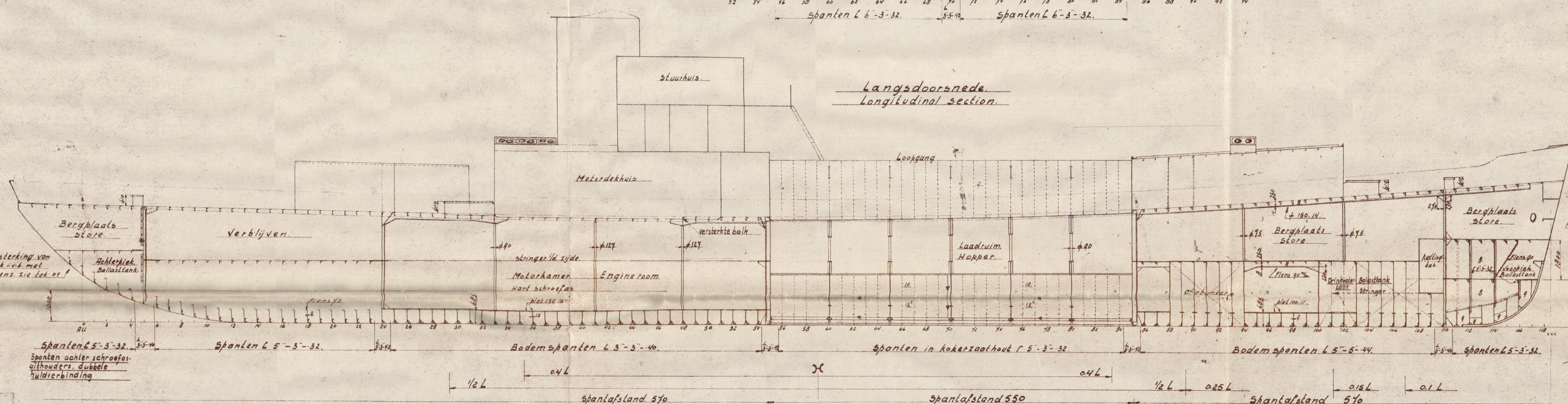
voor versterking onder sloepklomper  
Zie afz. tek. nr.



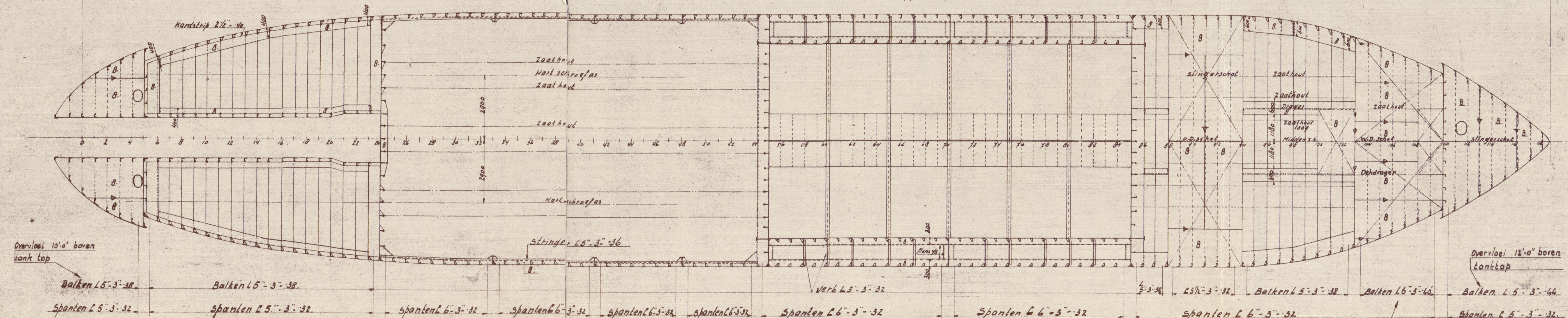
Laadruimwand  
Hopper side plating.  
stylen - 5"-10.



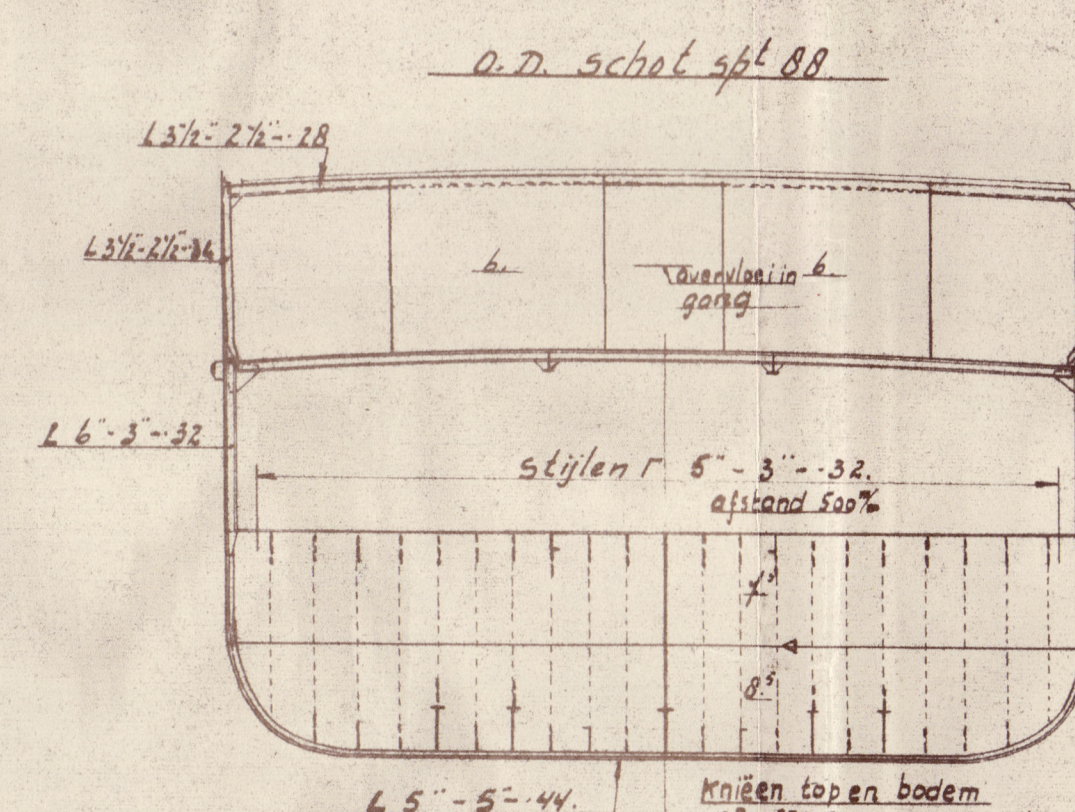
Langsdoorsnede.  
Longitudinal section.



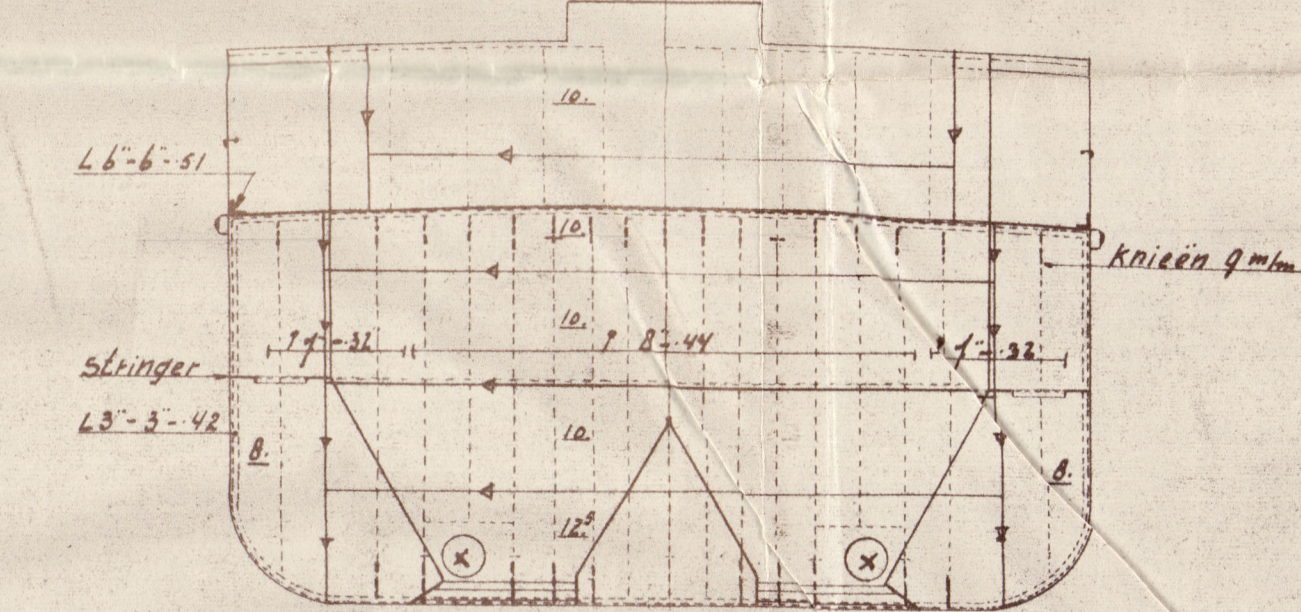
Doorsnede over ruimen  
Section hopper.



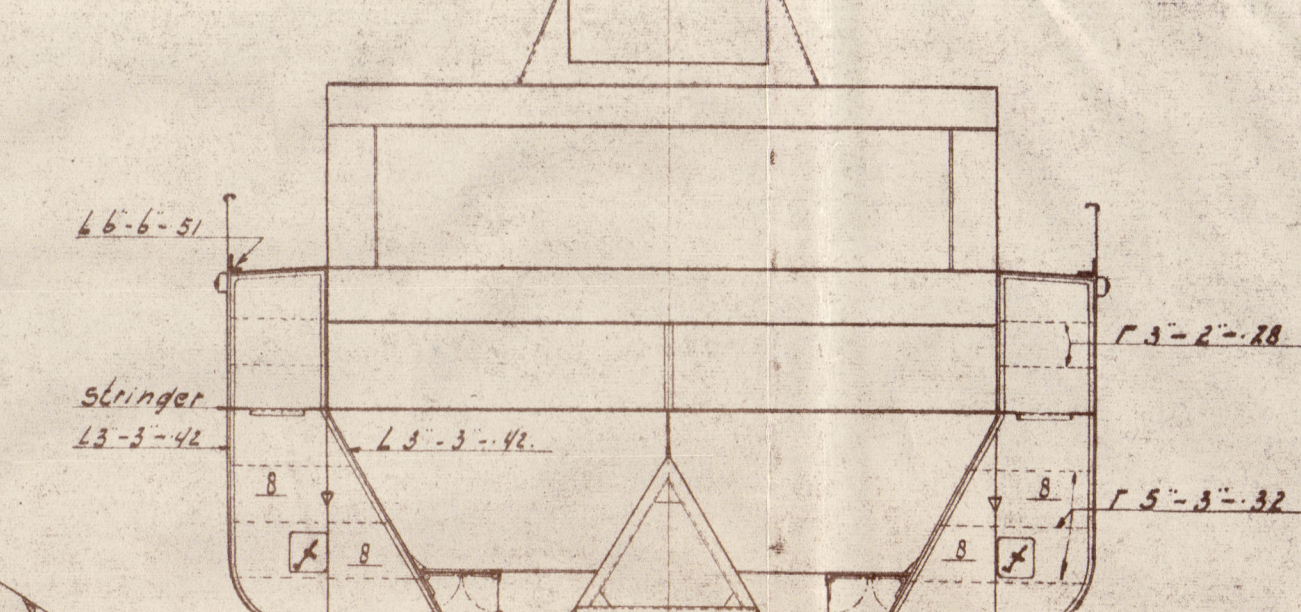
boven tanktop



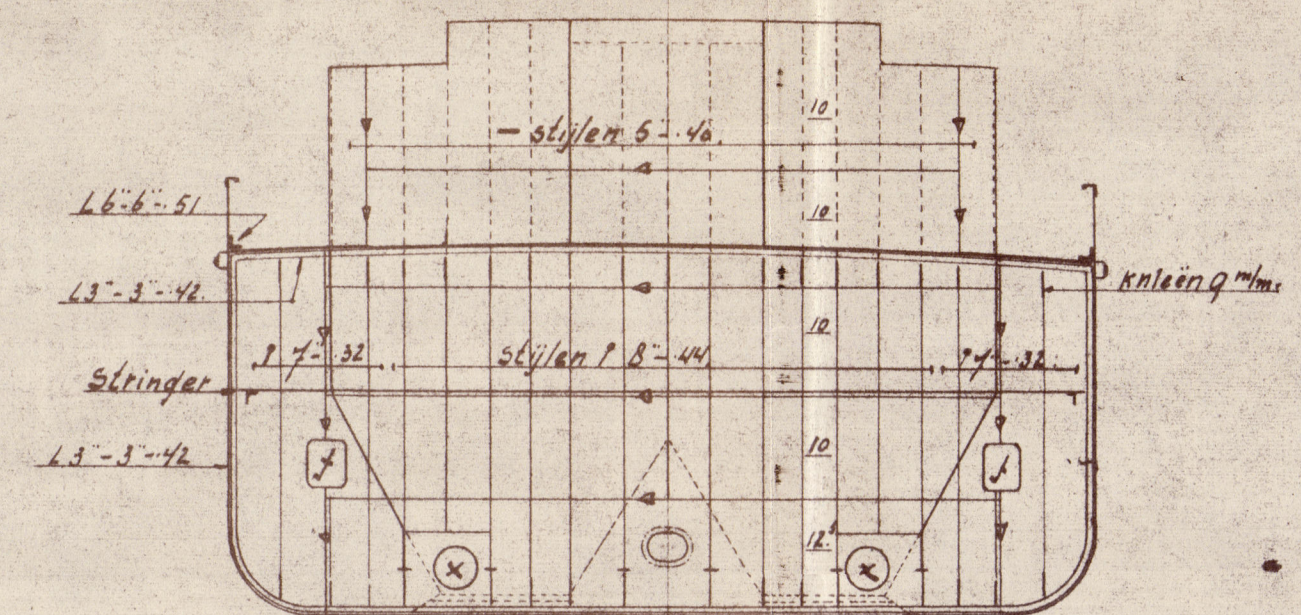
W.D. Schol sp<sup>t</sup> 85.



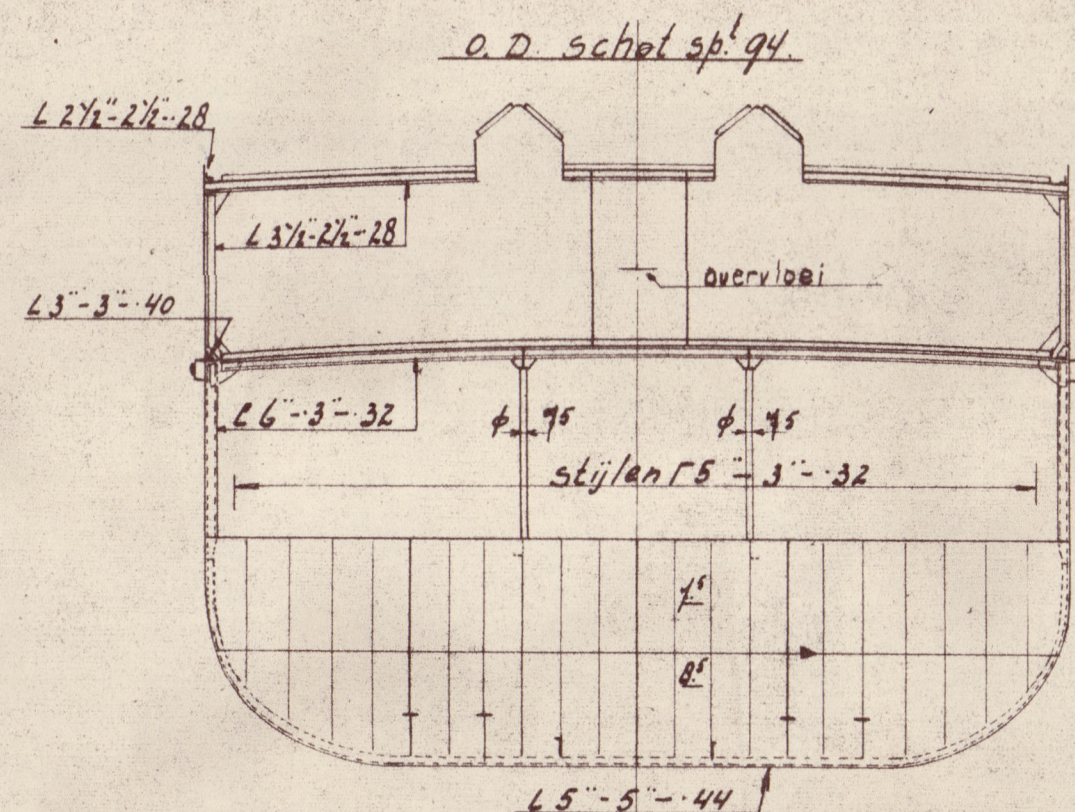
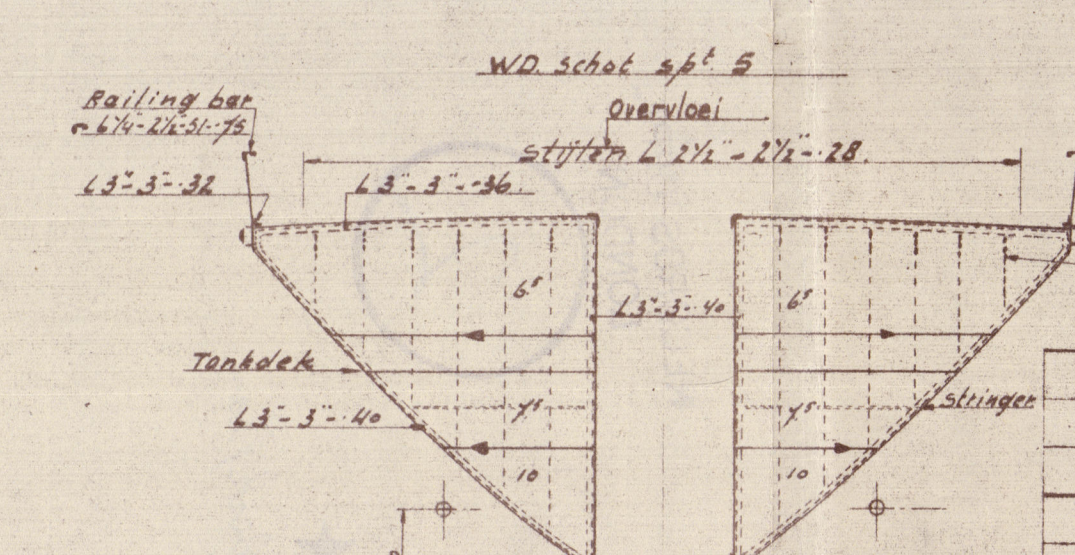
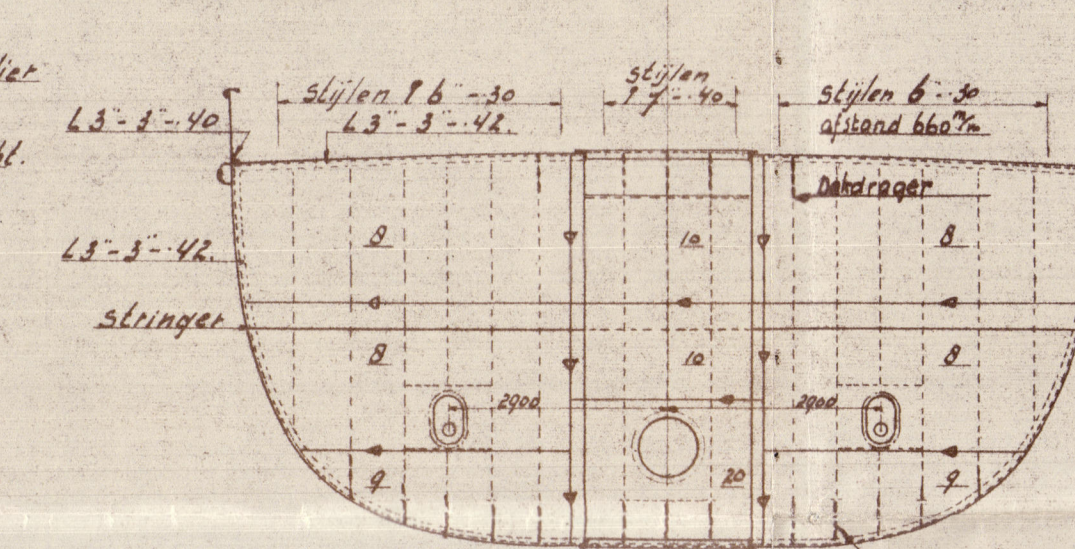
W.D. Schol sp<sup>t</sup> fo.



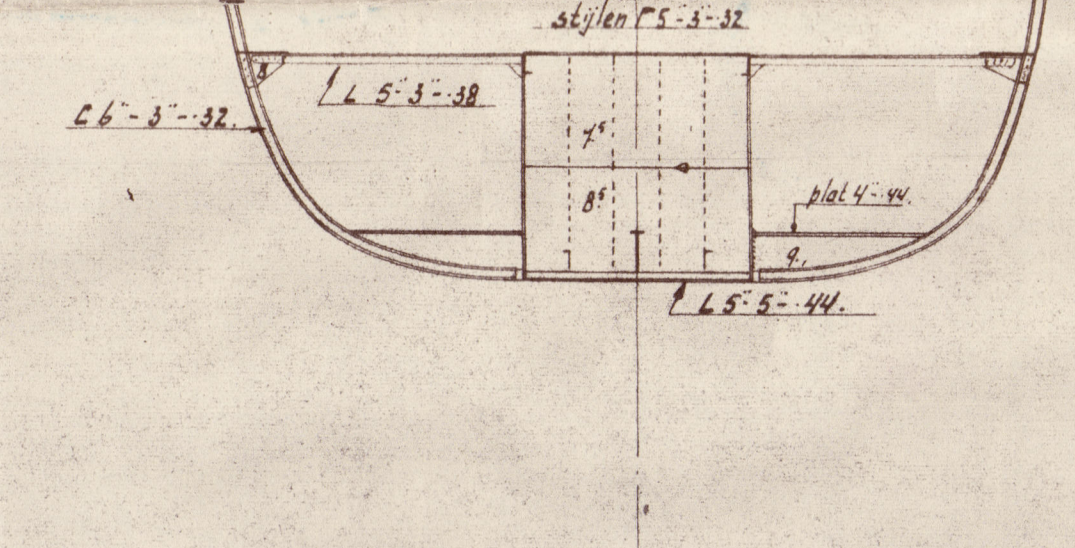
W.D. Schot spl 55.



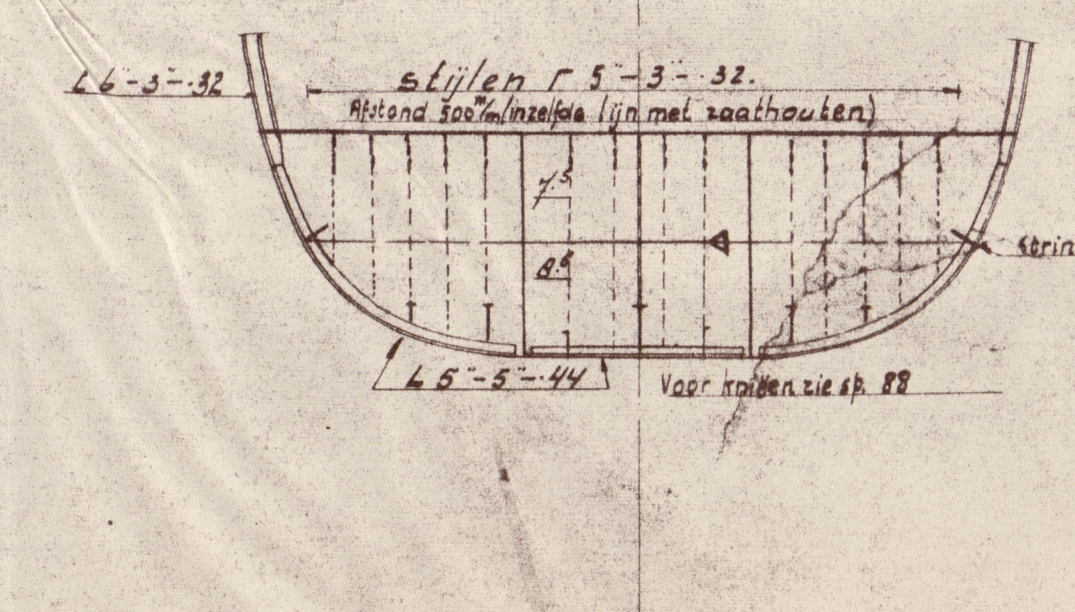
W.D. Schot Sept 24



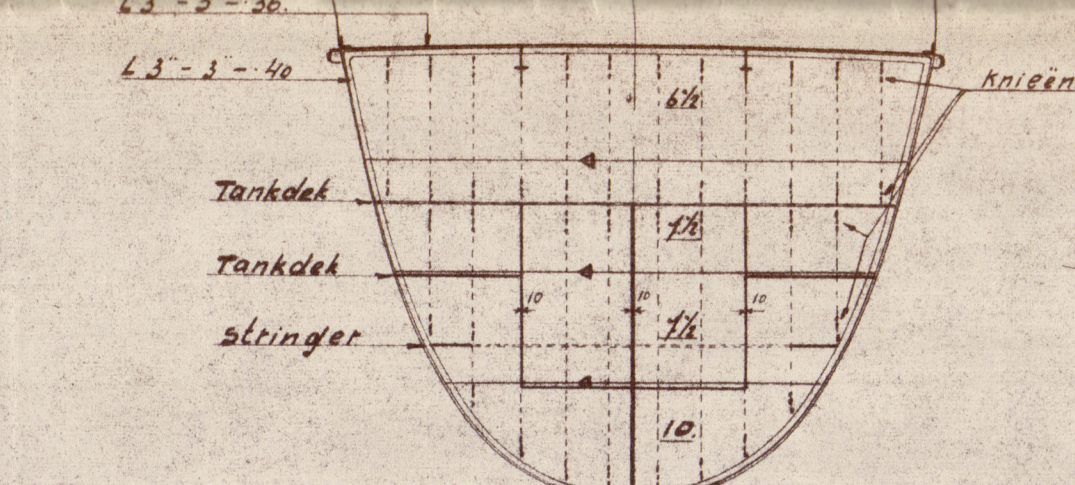
W.D. Schol sp<sup>t</sup> 100.



W. D. Schot sp<sup>t</sup> 103.



W.D. Schob sp<sup>t</sup> 110.



## Hoofdafmetingen

Lengte over alles	+ 41.35 m.
Lengte tussen 11	67 - "
Breedte op spanen	11.50 "
Holte in de zijde	4.80 "
Diepgang geladen	4.20 "
" volgens vrijboordregels	4.05 "

### Principal dimensions

Length over all	± 234.08'
Length between p.p.	219.8'
Breadth moulded	37.75'
Depth moulded	15.75'

The scantlings as shown and amended  
are suitable for a summer moulded  
draught of about 13,24'

Class: L.R. + 100 A1. Suction Hopper Dredger.

BELONGS TO  
ROTTERDAM REPORT N° 13

Conforms  
approved plan  
signed and dated  
CL 6-9-'50

of

[illegible]

002269-002278-0166



RECORDS DEPT.  
LONDON

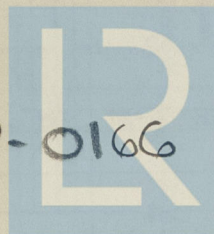
2

Matola



Coast Profile + Beck plan

002269-002278-0166



© 2021

Lloyd's Register  
Foundation