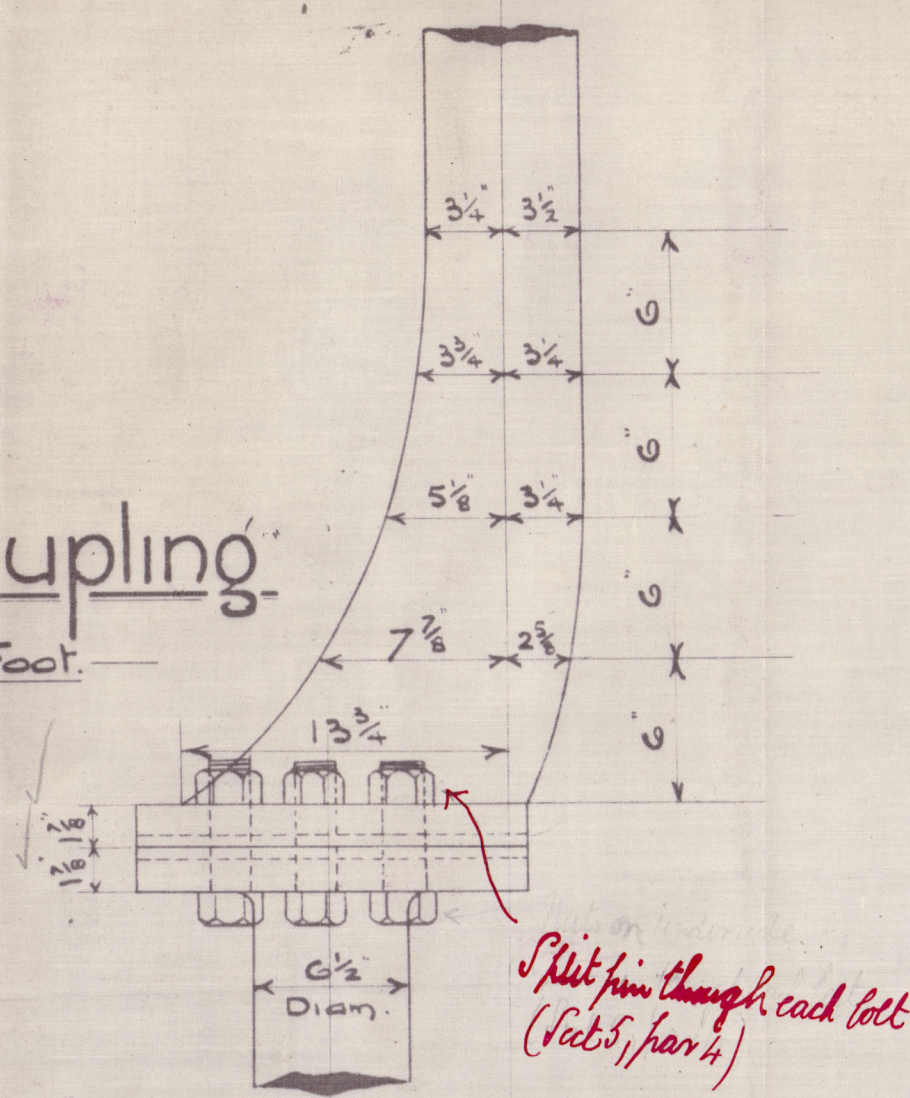


Full Size Detail of Stopper.

Detail of Coupling:

Scale $1\frac{1}{2}'' = 1$ Foot.



Split pin through each bolt
(Act 5, par 4)

Fitted
6 Bolts
1 7/8 Diam

Nº 175 s.s.
Rudder Plan.

Scale $\frac{1}{2}'' = 1 \text{ Foot}$

Numerals

Area. = $71.1 = A$

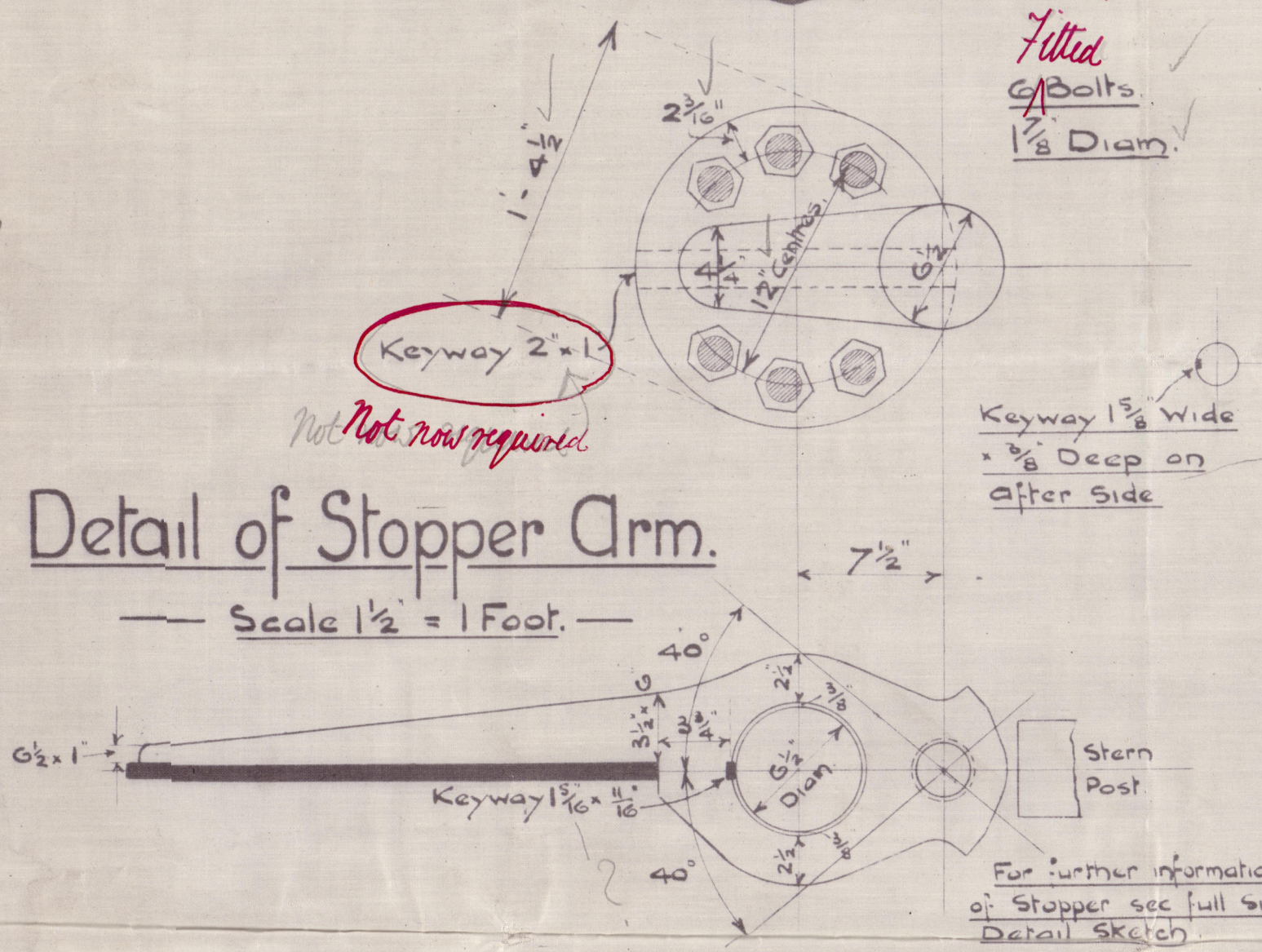
$$C.G. = 2.710 = D$$

$$A \times D = 192.68$$

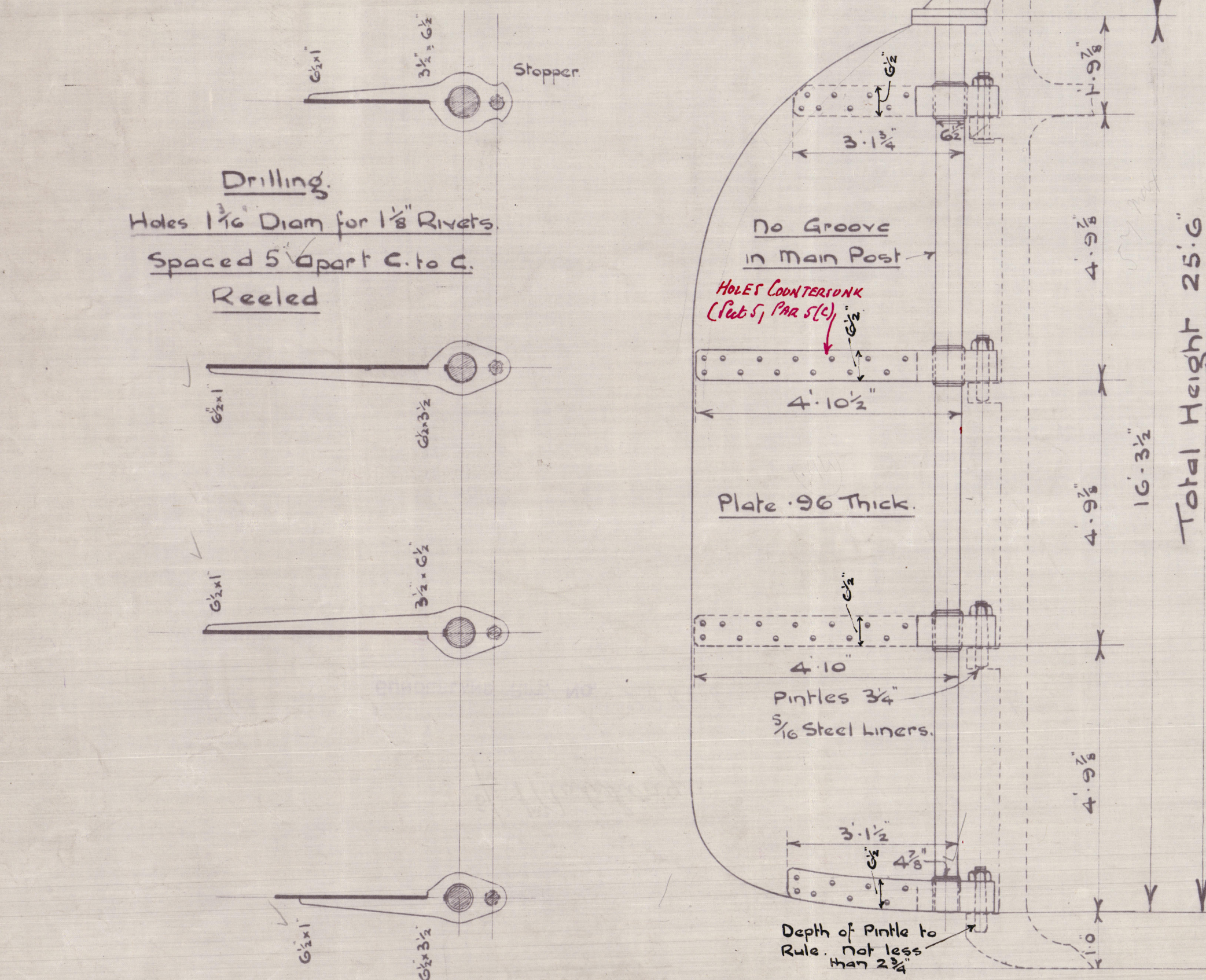
Not exceeding 10 Knots = 6½" Rudder Head.

Detail of Stopper Arm.

Scale $1\frac{1}{2}'' = 1 \text{ Foot.}$



For further information
of Stopper see full size
Detail Sketch.



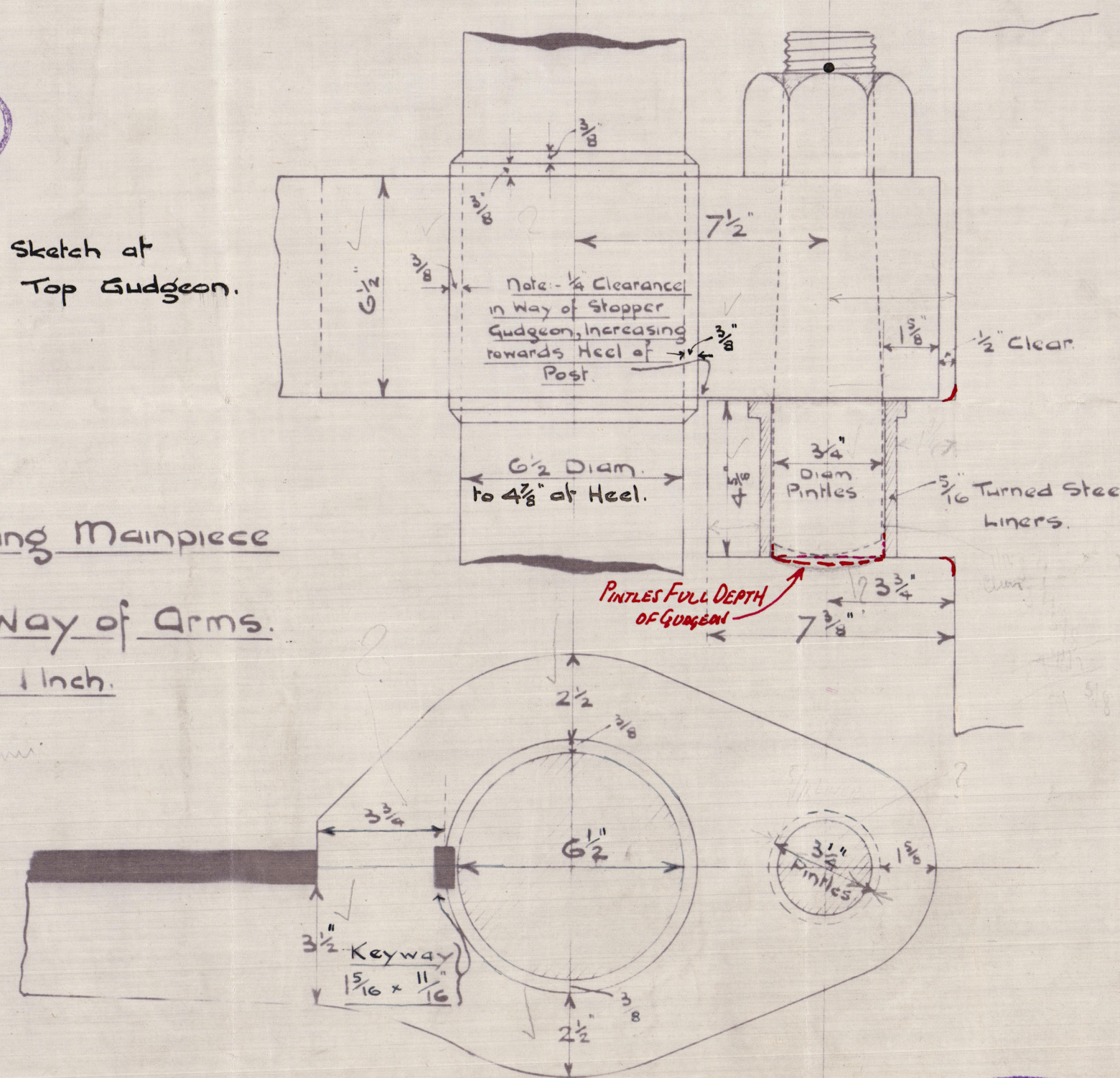
Total Height 25'6"

Sketch at
Top Gudgeon.

Sketch showing Mainpiece

Increased in Way of Arms.

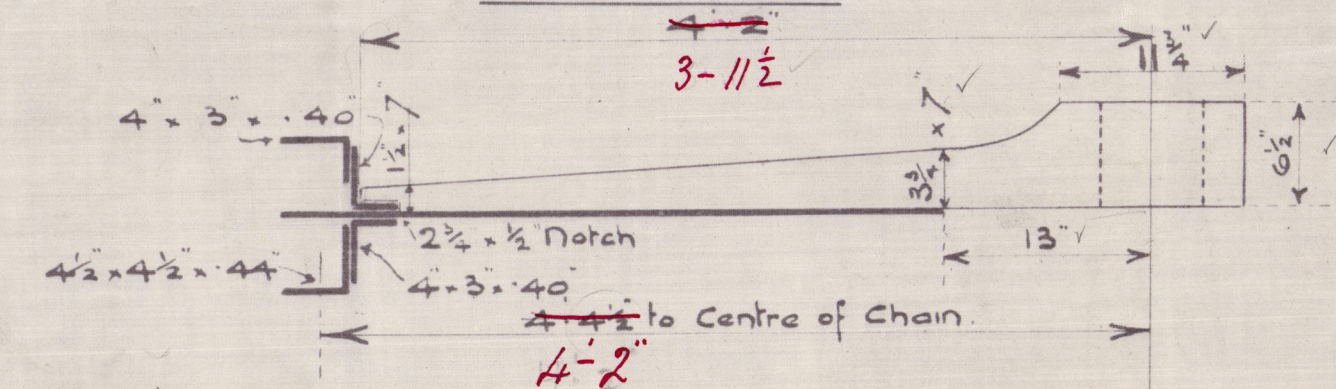
Scale $\frac{1}{4} = 1$ inch.



PINTLES FULL DEPTH
OF GUDGEON

Quadrant Tiller (Hand Screw Gear aft.)

Scale 1" = 1 Foot.



Chains $7\frac{1}{8}$ "

Rods $1\frac{1}{16}$ "

Keyway $1\frac{3}{8}$ x $\begin{cases} \frac{8}{16} \text{ Deep at Top} \\ \frac{7}{16} \text{ at Bottom.} \end{cases}$

Holes to Suit
1 1/8 Bolts.

This dimension to Gauge
from Rudder Head.

Messrs John Crown & Sons Ltd,

Shipbuilders,

Strand Slipway

Dec 14th 1923.

002258-002270-0156

02264 Foundation

1997

SUNDERLAND

Nº 6

MESSRS J. CROWN & SONS LTD

Nº 145 s/s.

RUDDER & QUADRANT

s/s Matching.

BUNDERLAND RPT. NO. 28888.



© 2021

Lloyd's Register
Foundation

002269-002278-0156