

N^o 175 s.s.

Scale $\frac{1}{2}$ " = 1 Foot.

Stern Frame.

First Longitudinal Numeral 12233.6

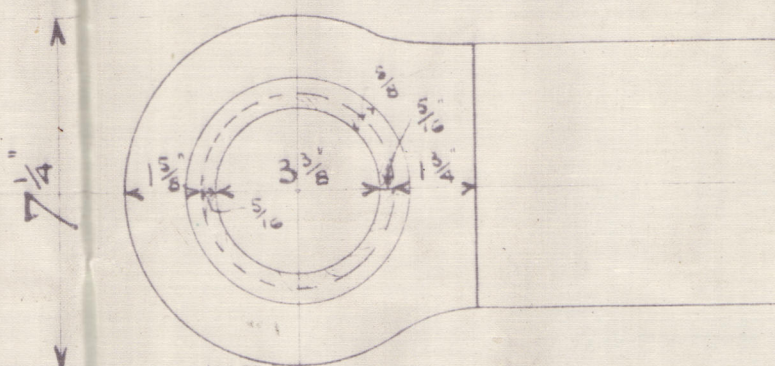
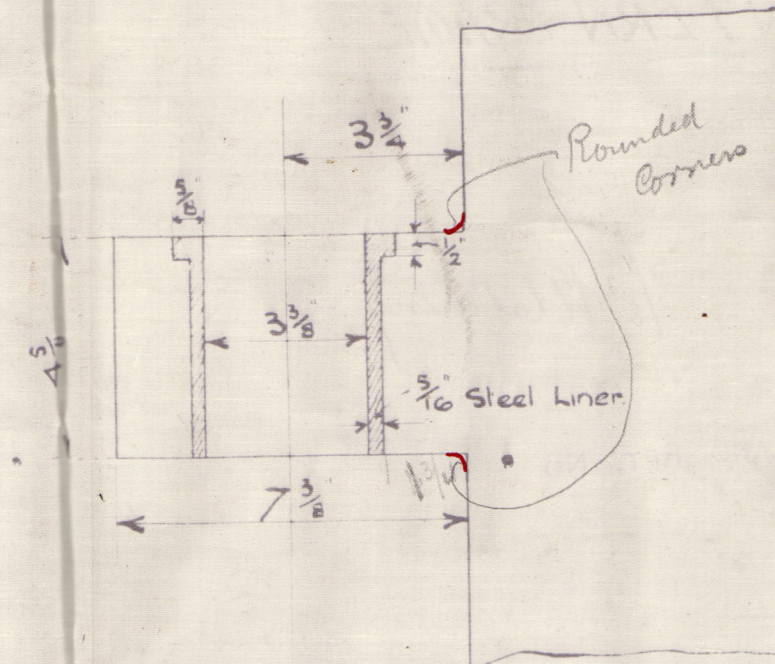
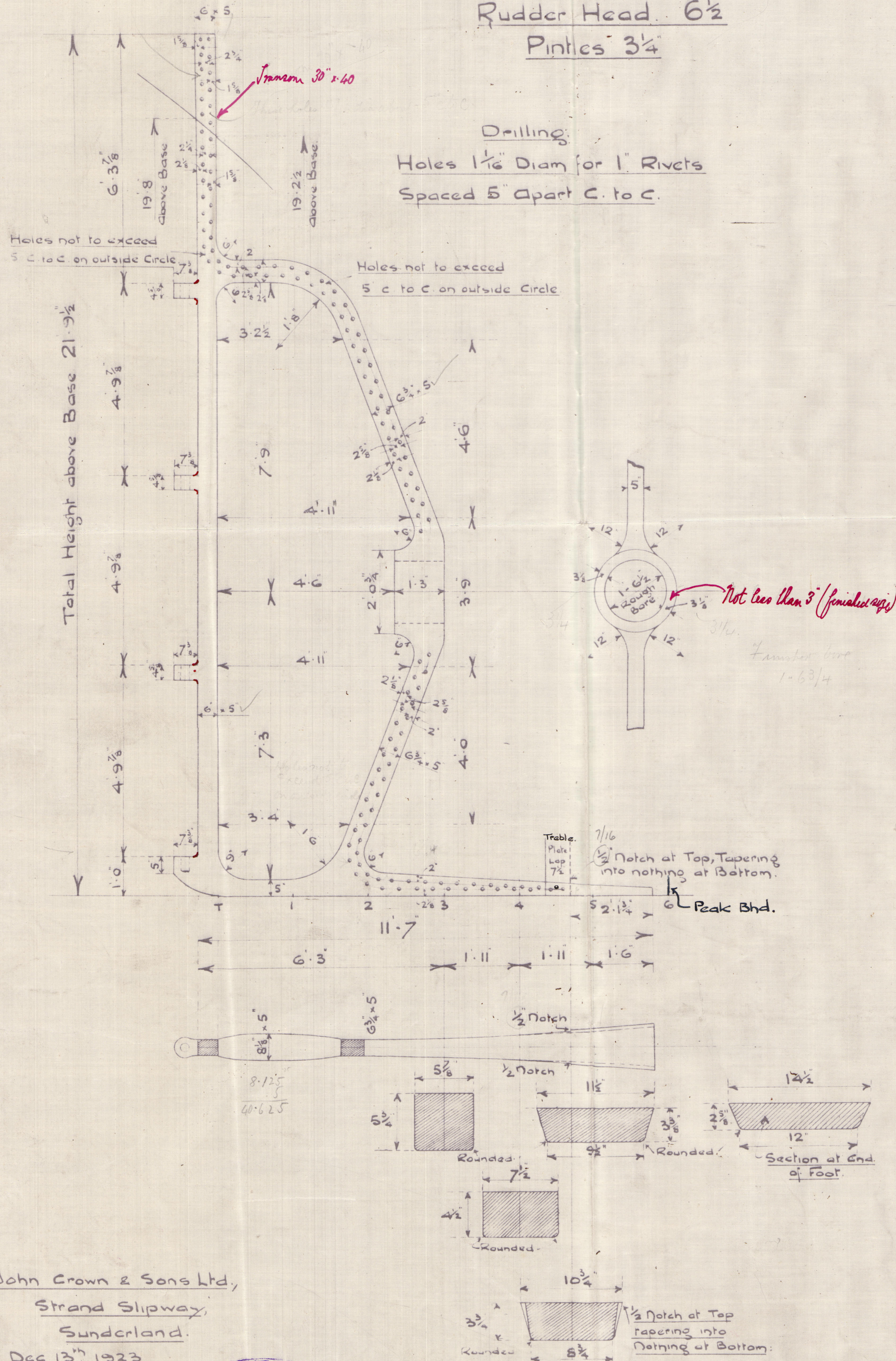
Rudder Head $6\frac{1}{2}$ "

Pintles $3\frac{1}{4}$ "

Drilling:

Holes $1\frac{1}{16}$ " Diam for 1" Rivets

Spaced 5" Apart C. to C.



Detail of Gudgeons.

Scale $\frac{3}{8}$ " = 1 Foot.

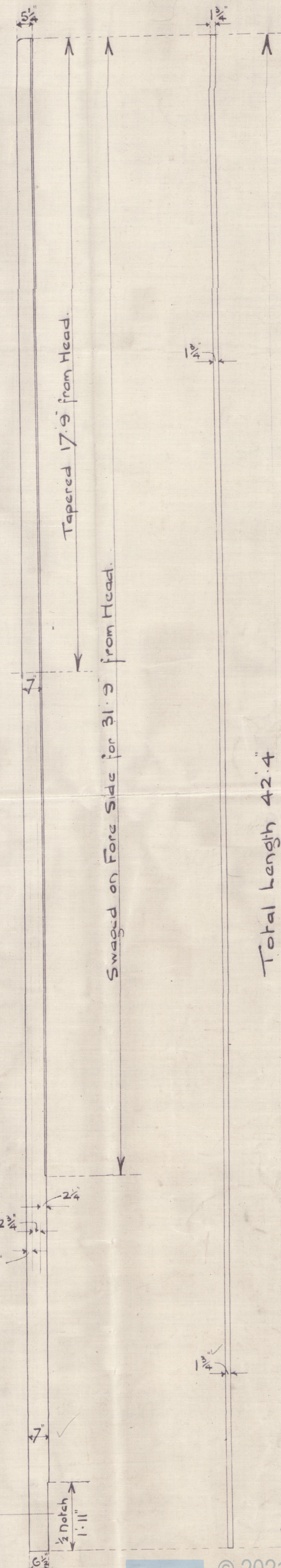
Frames spaced 23" at Ends.

Stem Bar. Rolled Steel.

Drilling:

Holes $1\frac{1}{16}$ " Diam. for 1" Rivets spaced 5" apart C. to C.

Note: Foot Drilling to be marked off on Forgings.



John Crown & Sons Ltd,
Strand Slipway,
Sunderland.
Dec 13th 1923.



SUNDERLAND Nº5

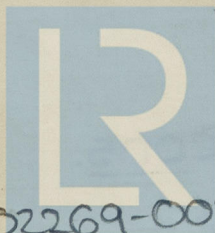
MESSRS J. CROWN & SONS. LTD

Nº 145 s/s

RUDDER PLAN
STERN FRAME

s/s Matching.

SUNDERLAND RPT. NO. 28888.



© 2021

Lloyd's Register
Foundation

002269-002278-0155