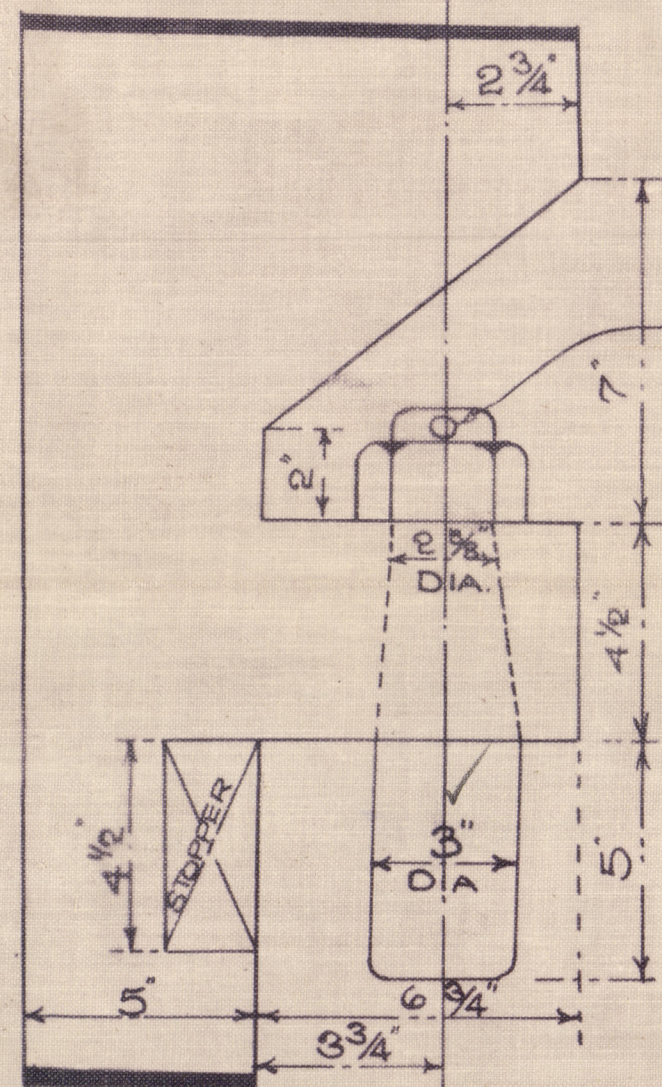


RUDDER

HOLES FOR $\frac{7}{8}$ " DIA RIVETS DRILLED
5 DIAS $\frac{3}{4}$ APART
SCALE $\frac{3}{4}$ " = 1 FOOT

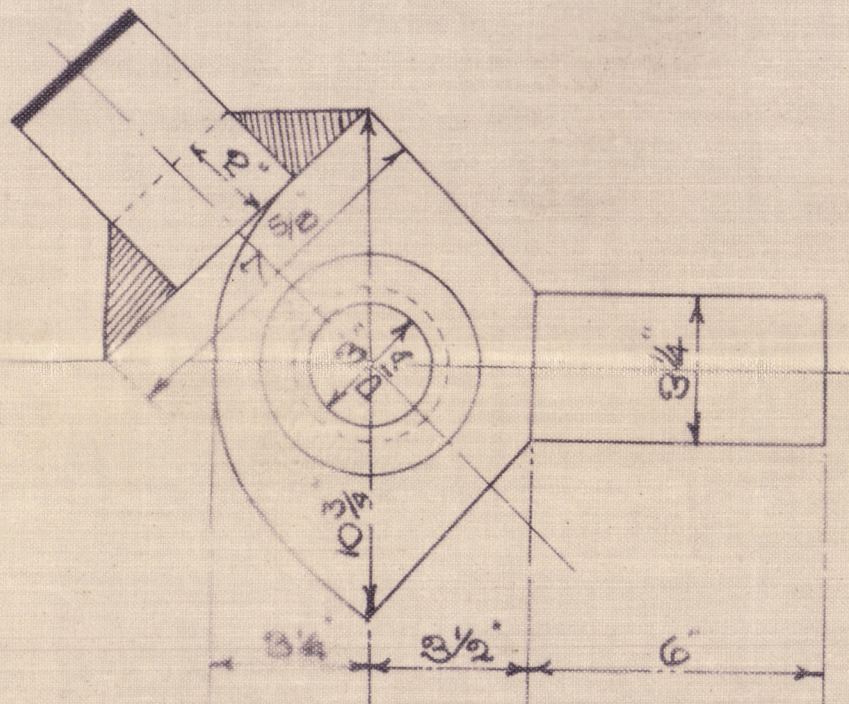
SPLIT PIN FITTED
ABOVE NUT.



ENLARGED VIEW OF PINTLES

NOTE:- THESE PINTLES ARE LOOSE. CARE TO BE TAKEN THAT THE CENTRES OF PINTLES IN RUDDER ARE IN LINE WITH THE CENTRES OF HOLES IN STERN FRAME.

AREA OF RUDDER 42.5 SQFT
CG " " 2.13
/ NUMERAL FOR RUDDER
A * D = 90
SPEED NOT EXCEEDING
12 KNOTS



ENLARGED VIEW OF STOPPER

RUDDER TO HEEL OVER TO AN ANGLE OF 45° EXACTLY.

N^o 539.40 & 41-

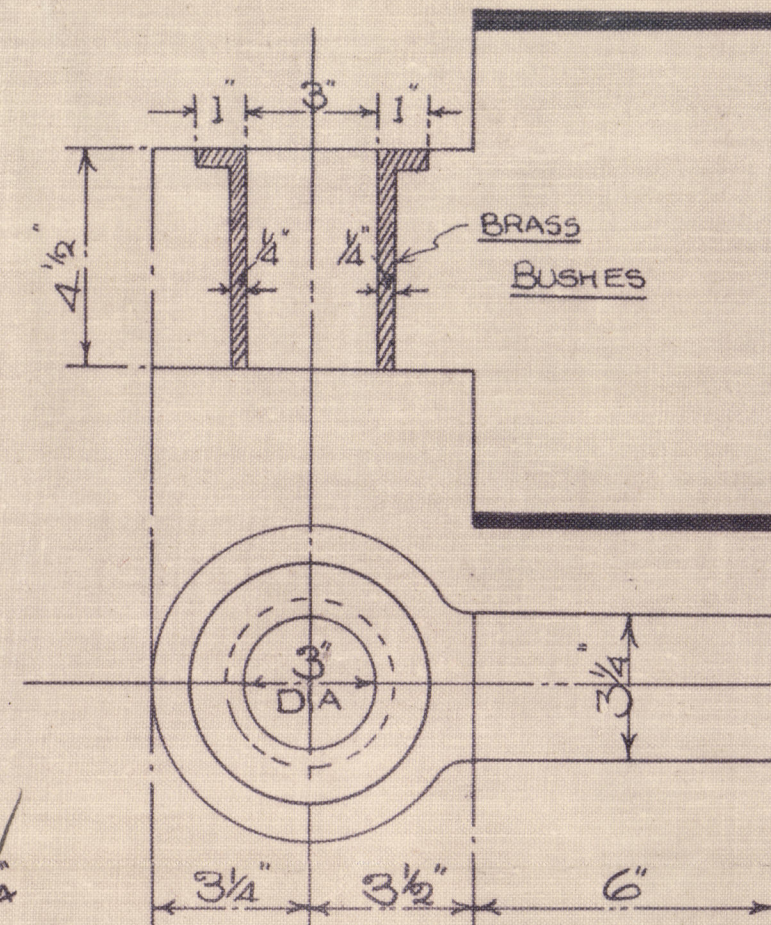
COOK WELTON & GEMMELL LTD
SHIPBUILDERS
BEVERLEY

APPROVED BY LLOYDS:-

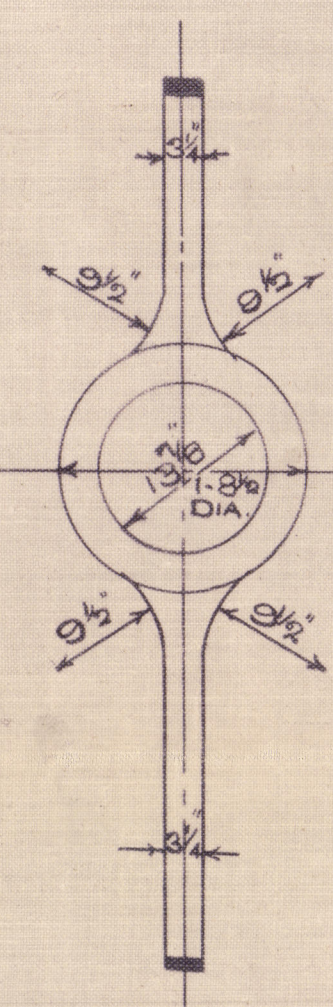
STERNFRAME

HOLES PITCHED $1\frac{3}{4}$ & 2" FROM INNER EDGE OF POST
HOLES DRILLED FOR 1" DIA RIVETS 5 DIAS APART

SCALE $\frac{3}{4}" = 1 \text{ FOOT}$



ENLARGED VIEW OF BRASS BUSHES



NOTE. HOLE BORED
EXACTLY TO SIZE
GIVEN VIZ $13\frac{1}{8}$ " DIA

27. 11. 29

Cook, Welton & Gummell, Ltd.
Beverley

Stem frame & Rudder
Nos. 539-40-41

"Kingston Olivine"⁵³⁹
S.S.

HULL REPORT NO. 40742

"Kingston Coral"⁵⁴⁰
S.S.

HULL REPORT NO. 40842



© 2021

Lloyd's Register
Foundation

002269-002278-0100