

3-3-11

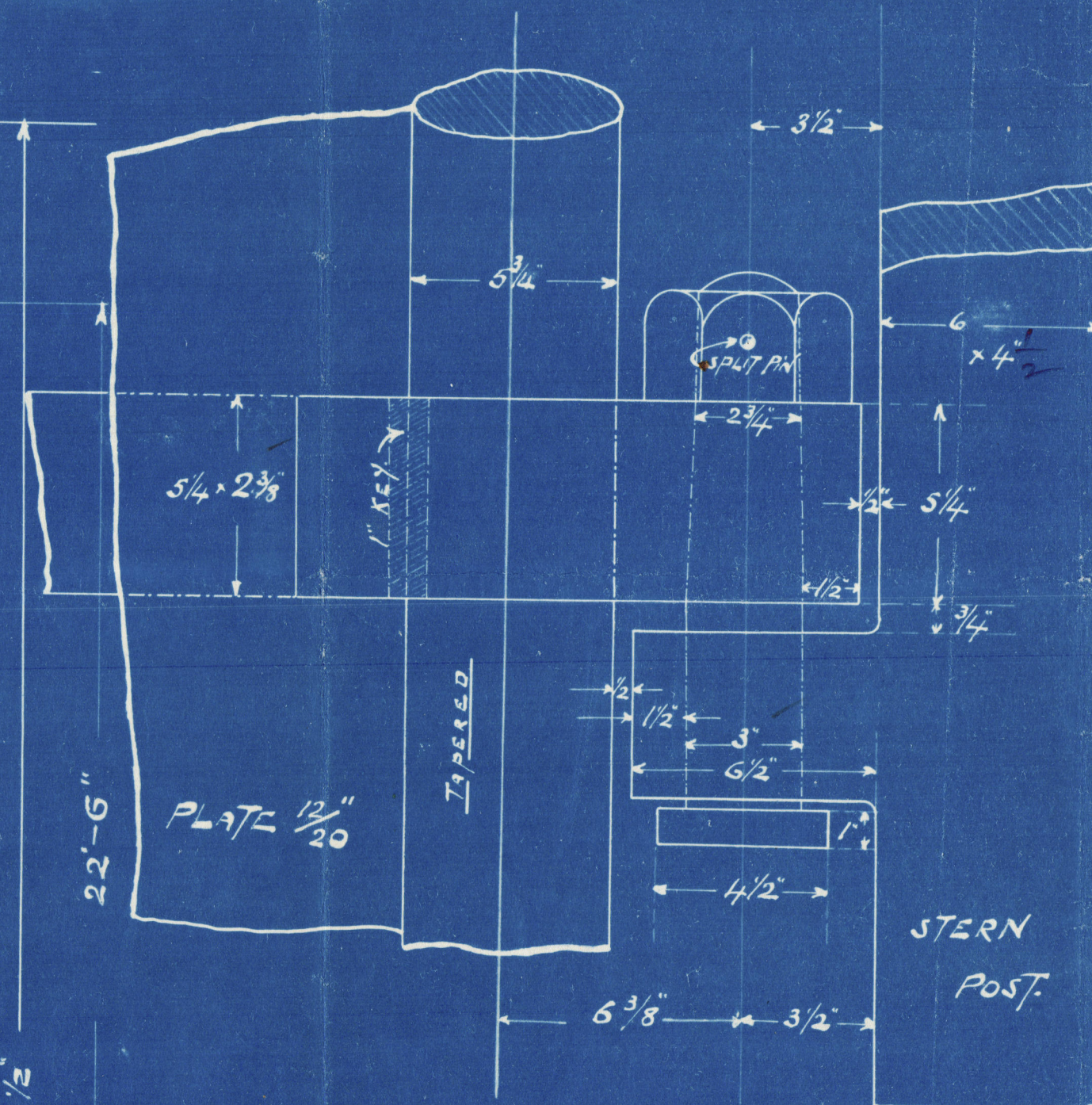
# **RUDDER & STERNPOST (FORGED)** **S.S. No 74**

SCALE  $\frac{3}{4}$ " = ONE FOOT.  
TO LLOYD'S REQUIREMENTS

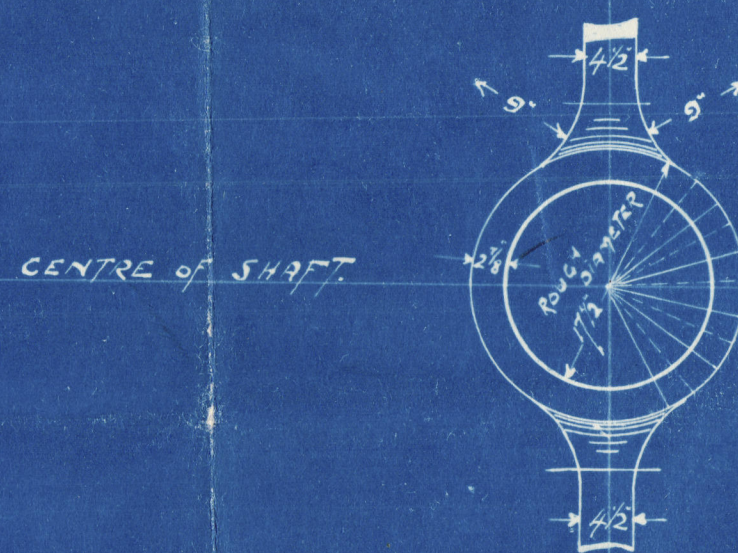
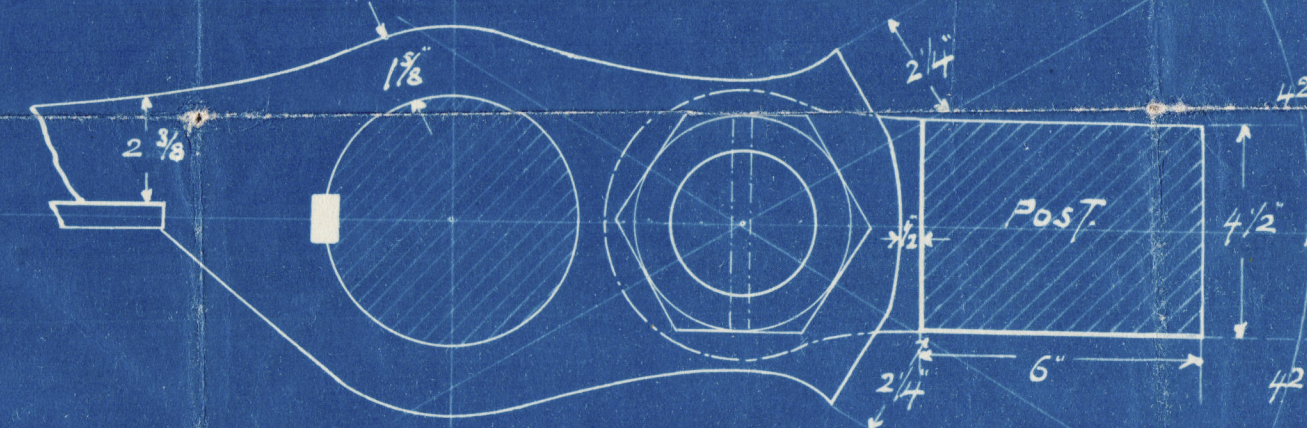
RUDDER  
RIVET HOLES  $\frac{1}{16}$ " SPACED 5" C.T.C.  
DEEPLY COUNTERSUNK

STOCK TO BE SWELLED AT ARMS AS RECOMMENDED BY LLOYD'S  
SO THAT KEYWAY DOES NOT WEAKEN STOCK.

RIVET HOLES  $\frac{1}{16}$ "  
SPACED 5" C.T.C.

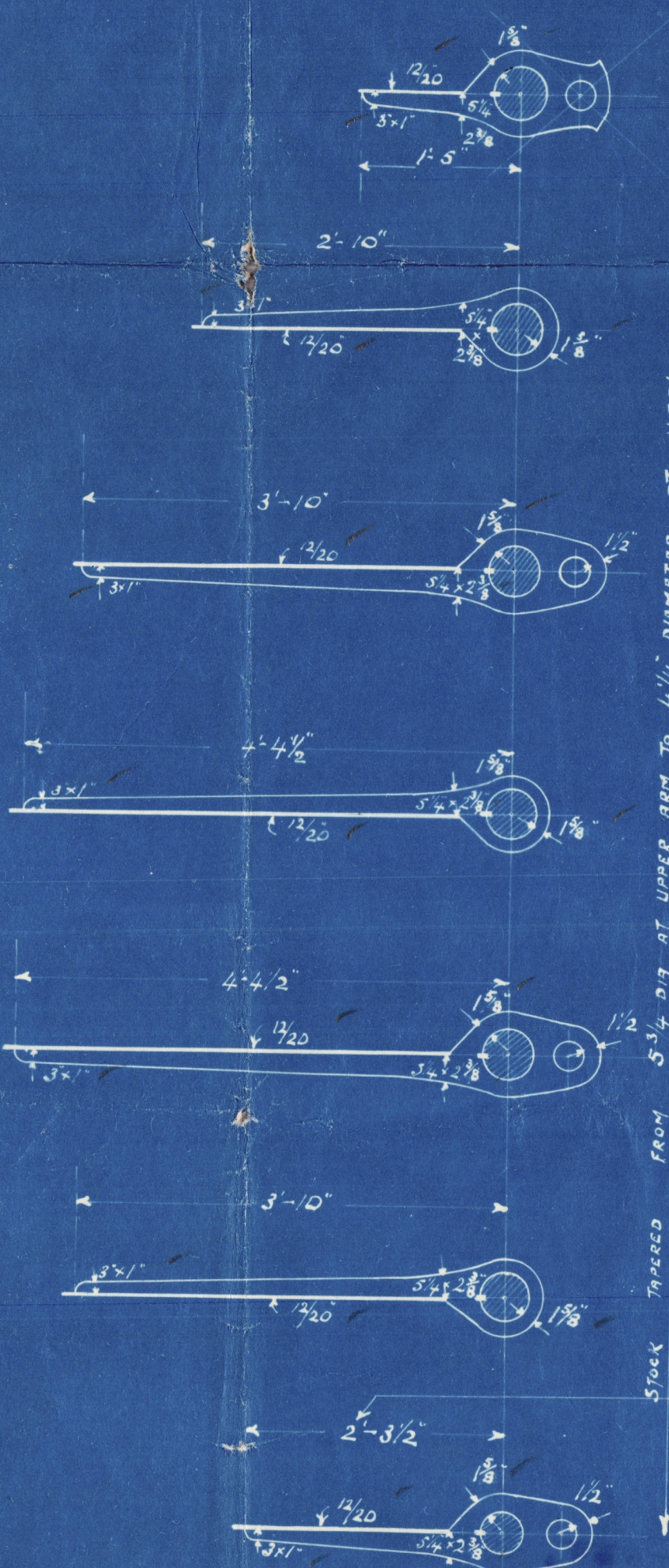


DETAILS OF PINTLES  
SCALE 3" = ONE FOOT.



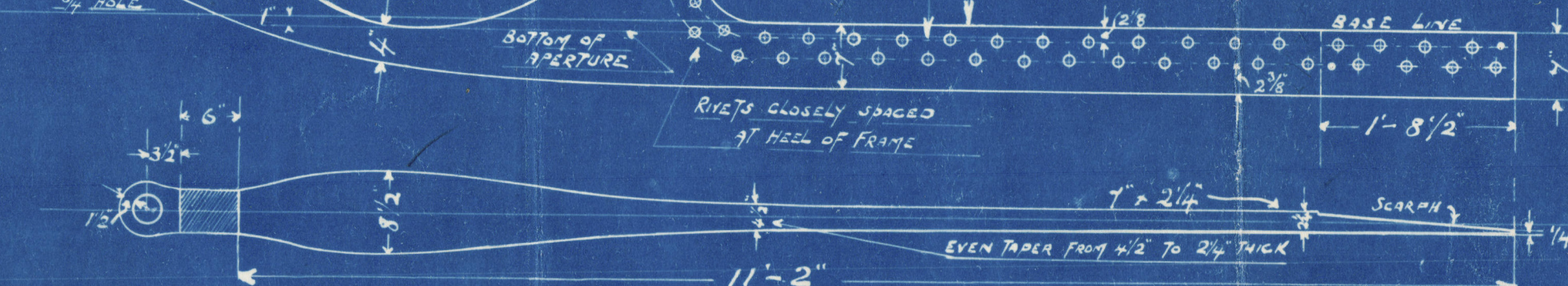
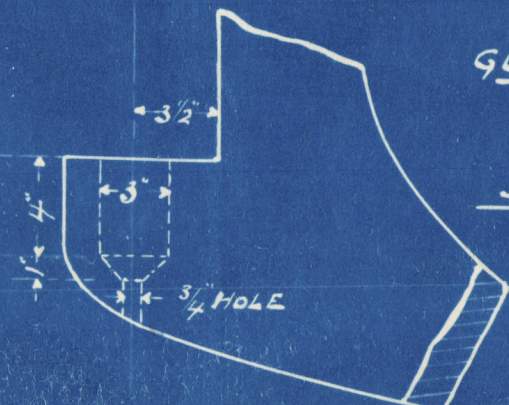
RIVET HOLES ROUND EYE OF STERN FRAME  
THRO' DRILLED AND DEEPLY COUNTERSUNK INSIDE

C.B.  
3-3-11



STOCK TAPERED FROM 5'-4" DIA AT UPPER ARM TO 4'-4" DIAMETER AT HEEL

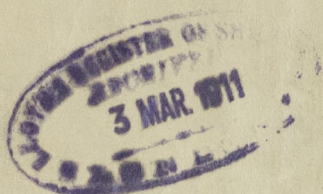
GUDGEON AT HEEL  
OF POST  
SCALE  $\frac{1}{2}$ " = 1 FT.



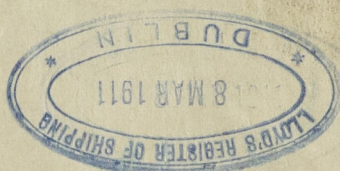


Rudder & Stern post

74.

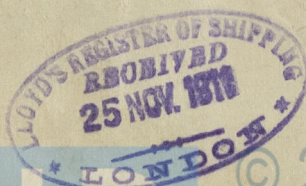


Kylecroft



Ex  
S. "Enda"

Dub 3/103



© 2021

Lloyd's Register  
Foundation

002269-002278-0003