

SHIP NO 970-1 & 982-3-4 985-6 987-8  
**STERN FRAME** N<sup>o</sup> 9934

SCALE 1" = 1' 0"

CAMBRIDGESHIRE

MATERIAL FORGED IRON OR STEEL

TO BRITISH CORPORATION TESTS AND SURVEYORS' SATISFACTION

TO LLOYD'S TESTS & SURVEYORS' SATISFACTION (ALSO 1982-3-4)

TO BRITISH CORPORATION TESTS & SURVEYORS' SATISFACTION

TO LLOYD'S TESTS & SURVEYORS' SATISFACTION

RIVETING

STERNFRAME: 1 1/2" HOLES FOR 1" DIA RNS SPACED 5" APART CRS  
 REEVED & DRILLED  
 CONNECTION TO TRANSOM: 1 1/2" DIA RNS (1 1/2" HOLES) SPACED 4" APART CRS IN BOTH ROWS REEVED & DRILLED

DETAIL OF TOP GUDGEON

NOTE: EXTREME CARE IS TO BE TAKEN TO WEAR TO DIMENSIONS GIVEN FOR POSITION OF GUDGEONS ON BOTH STERN FRAME AND RUDDER FRAME.

SEE ALSO SEPARATE PLAN OF RUDDER FRAME.

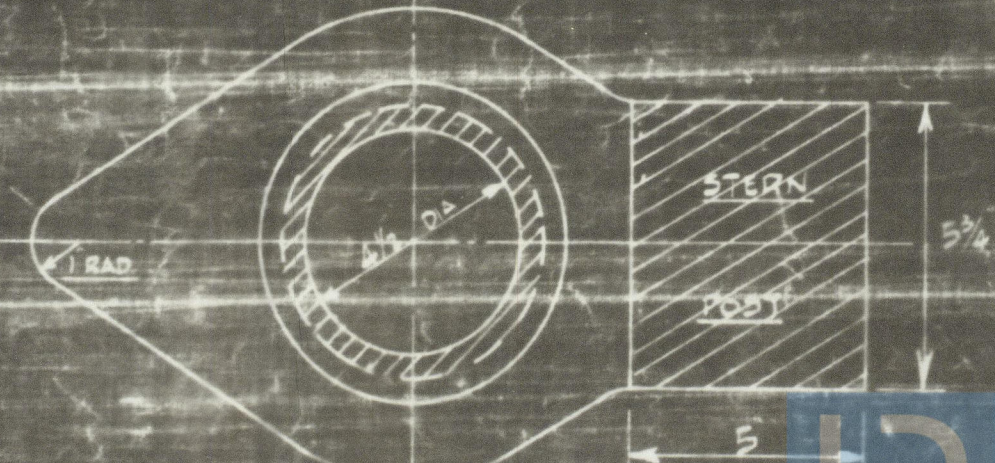
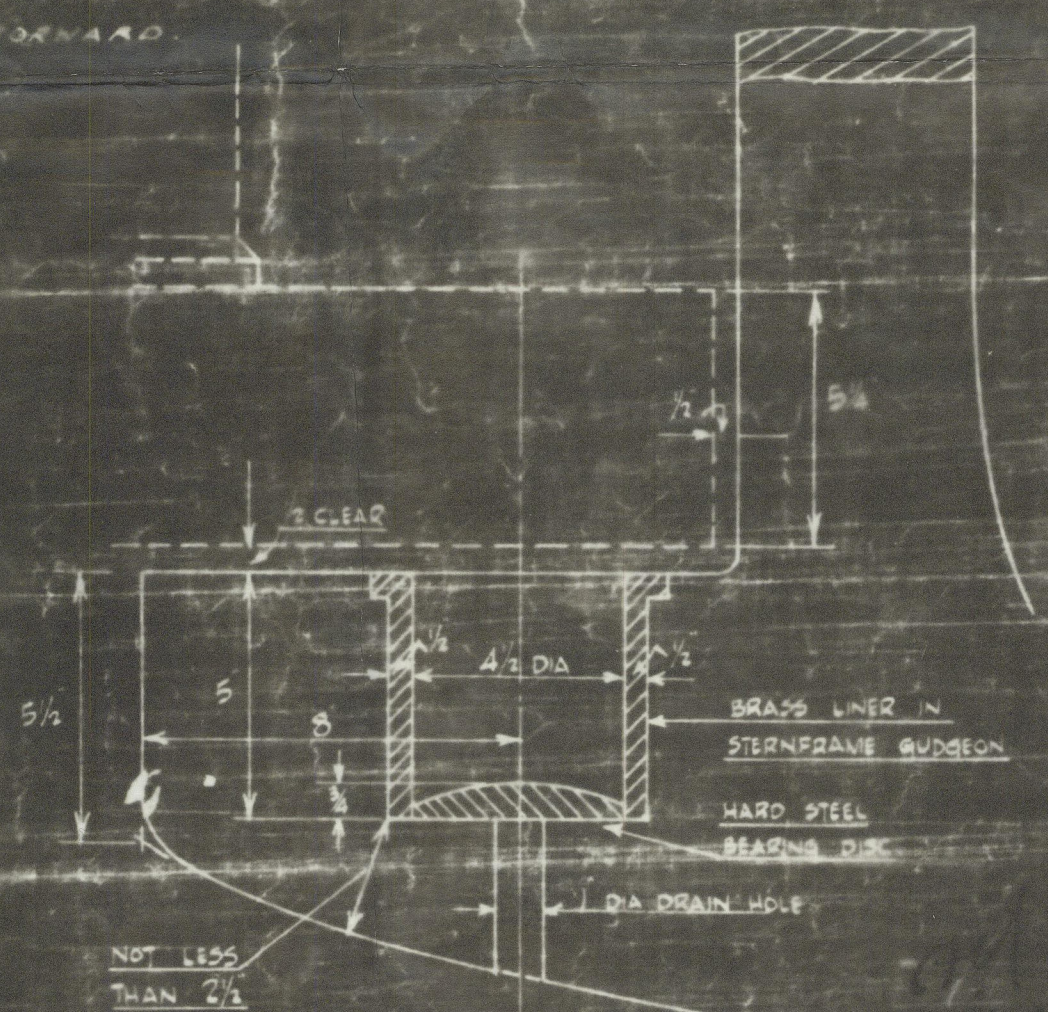
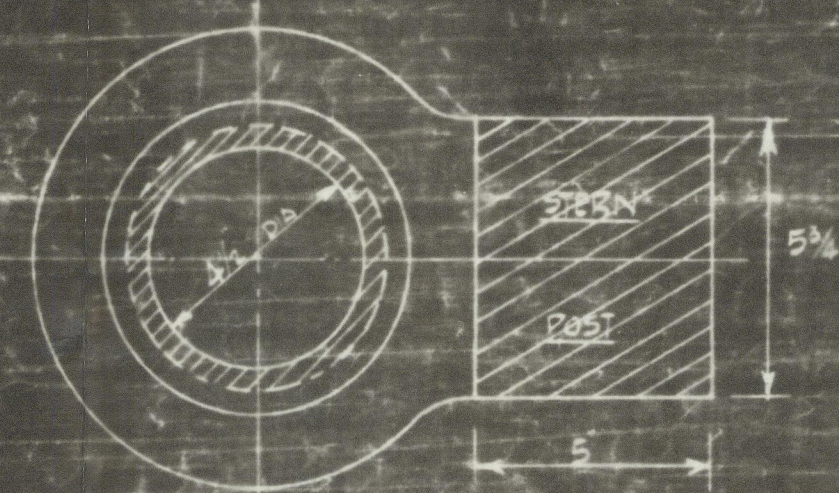
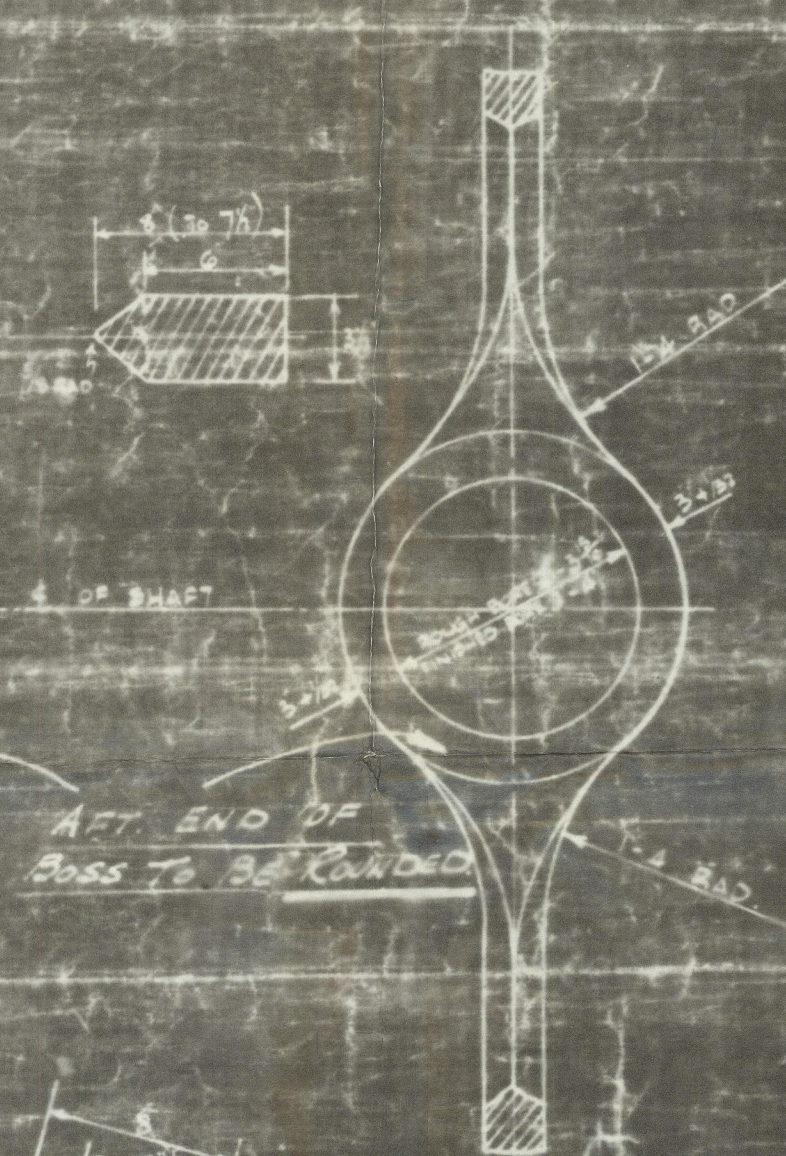
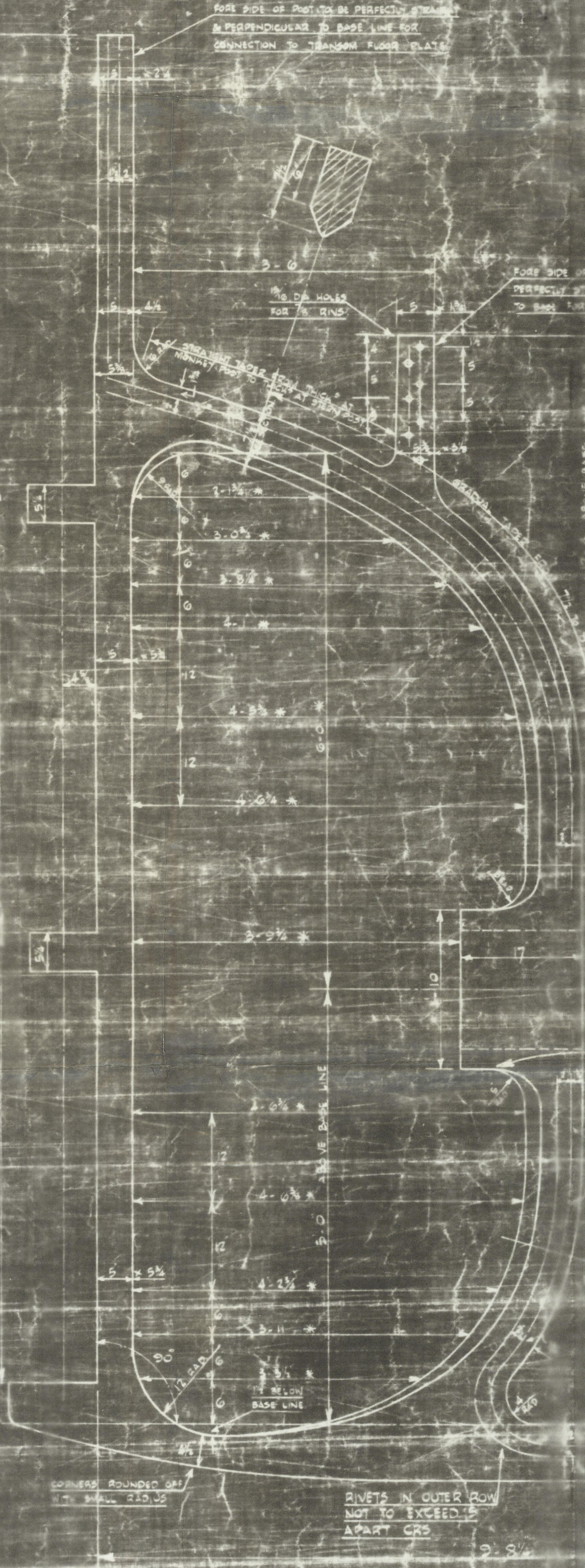
DIMENSIONS MARKED THUS \* TO BE STRICTLY ADHERED TO.

DETAIL OF CENTRE GUDGEON

RAKE OF SHAFT: 1 1/2" PER FOOT DOWN FORWARD

RAKE OF SHAFT: 1 1/2" PER FT DOWN FORWARD

DETAIL OF BOTTOM GUDGEON



© 2020 Lloyd's Register Foundation

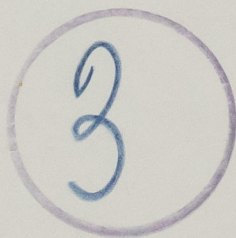


S/R.

Kingston Sapphire



STERNFRAME



© 2020

Lloyd's Register  
Foundation

002260-002268-0152