

N^o 32. MIDSHIP SECTION.

SCALE: - $\frac{1}{2}$ " = 1 FOOT.

DIMENSIONS: - LENGTH 425'-0" x BREADTH 57'-0" x DEPTH 32'-1 $\frac{1}{2}$ " M^{LD} TO UPPER DECK

TO CLASS 100 A1 AT LLOYDS. CARRYING PETROLEUM IN BULK

LONGITUDINAL FRAMING.

NOTE: - ALL SECTIONS ARE N.B.S.

LLOYDS NUMERALS

L x D = 13653

L (B+D) = 37818

L₀ = 1323

d = 20.37

2 TRANSVERSES IN OIL TANKS

SPACED 9'-4" 7'-10 $\frac{1}{2}$ " 9'-4"

LENGTH OF TANKS 26'-6 $\frac{1}{2}$ "

TRANSVERSE FRAMING AFT OF OIL TANKS

EQUIPMENT NUMERAL

L (B+D) = 37818

POOP = 88.5

BRIDGE = 34.5

F'OLE = $\frac{88}{167.5} = 940$

12'-0" x 75' x 75' = 1088.6

CASING 62.5

HOUSE 37.5

32' x 75' x 5' = 315.0

263.25

30144.35

39163.0

EQUIPMENT

2 BOWER ANCHORS (STOCKLESS, EACH 68 CWTs) TOTAL WT. 134 CWTs

1 " " " " 58 $\frac{1}{2}$ "

1 STREAM ANCHOR 19 CWTs. EX STOCK

370 FATHOMS $\frac{5}{16}$ " STUD CHAIN CABLE

90 " 5" STEEL WIRE (STREAM)

120 " $\frac{5}{16}$ " " (TOWLINE)

90 " (2 OFF) 2 $\frac{3}{4}$ " " (HAWSER)

90 " (2 OFF) 2 $\frac{3}{4}$ " " (WARP)

STEM 10" x 2 $\frac{9}{16}$ "

RUDDER 10 $\frac{1}{2}$ " x 8 $\frac{5}{16}$ "

STERNFRAME 9" x 8 $\frac{5}{16}$ "

DRAIN HOLES $\frac{5}{8}$ " DIA 12" APART TO BE
PUNCHED IN ALL LONG^{TS} & BHD STIFF^{RS} B.A.
2" HOLES 30" APART IN 12" CHANNELS.

RIVETING

SHELL LONG^{TS} 1-4 RIVS THRO' SHELL 6 DIAS APART

LONG^{TS} 5-8 RIVS THRO' SHELL 6 DIAS APART &

4 $\frac{1}{2}$ DIAS FOR 9 RIVS. EACH SIDE OF BHDs & 9 x 8

ON OPPOSITE SIDES OF TRANS.

LONG^{TS} 9-21 6 DIAS. & 3 $\frac{1}{2}$ DIAS FOR 9 RIVS EACH SIDE

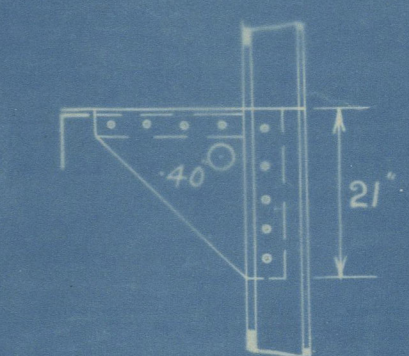
OF BHDs & 9 x 8 ON OPPOSITE SIDES OF TRANS.

LONG^{TS} IN NO 1 TANK ON FLAT OF BOTTOM 4 $\frac{1}{2}$ DIAS

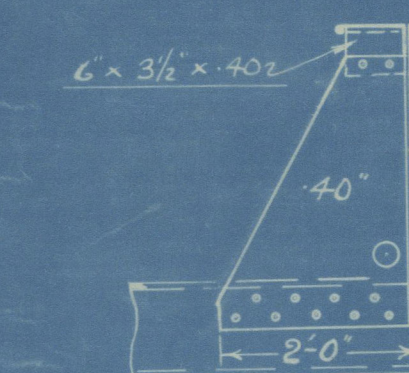
APART THROUGHOUT.

1-4 BHD LONG^{TS} 1-4 & 5-8 AS SHELL

& 9-10 AS 9-21 SHELL.



BKTS TO 4 BHD WEB
& SIDE TRANSVERSE



BKT. TO BOTTOM TRANS.
& FACE BAR SUPPORT

APPROVED
LLOYDS REGISTER OF SHIPPING
6.6.30

Blythswood S.B. Co.Ltd.

No. 32.

Revised
(shewing

MidSHIP

section
to 32'1½"

Karabagh H.
GLASGOW/R

6 2 5

Ed (new Act)

GLASGOW/REPORT No. 5'4080

Karabagh
GLASGOW REPORT No. 5'1783



© 2020

Lloyd's Register
Foundation

002244-0022540055