

6/5/19

DETAIL OF PILLAR HEAD CONNECTION AT HATCH SIDES

PILLAR CONNECTIONS TO TANK TOP

VIEW FORE & AFT

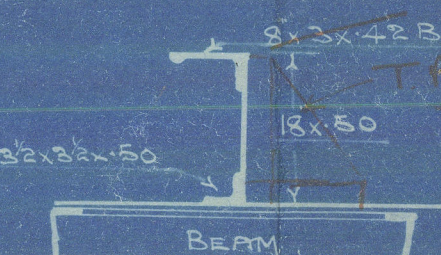
VIEW THWART SHIPS

# PROFILE SSN 13788

TO CLASS 100 A-1 AT LLOYDS

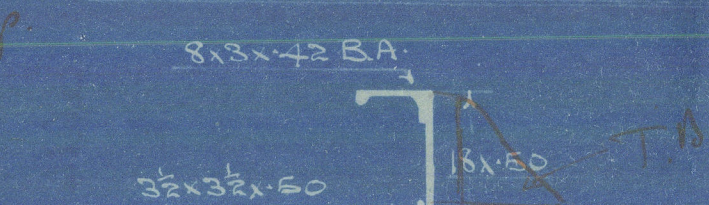
SCALE 1/8" = 1 FOOT

*Red. stiffeners to be specially increased at line of Girders.*

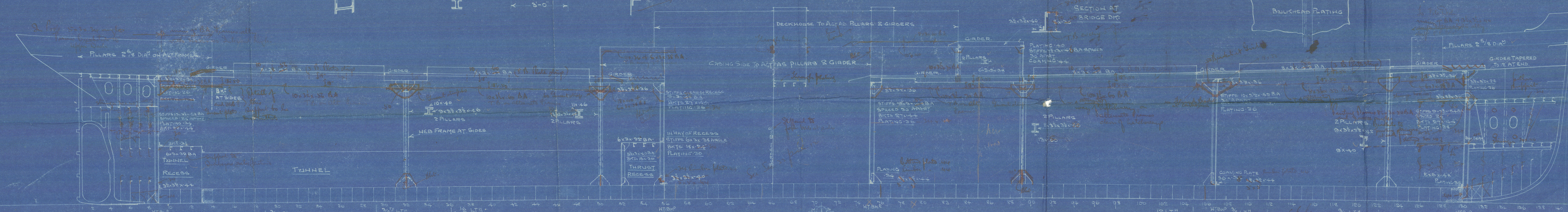


SECTION THRU GIRDER AT UPPER DK.

SECTION THRU GIRDER AT BH 10



*alt. frames along hatchways*



24 FRAME SPACING

21 FRAME SPACING

6x3x40 BA BA ALTERNATE TO POOP DK. ALTERNATE FRAMES 2x3x40

ANGLE BETWEEN POOP AND UPPER DECK BULKHEAD

TO POOP DK

FRAMES 8x32x54 BA ALL TO FORECASTLE DK & ALTERNATE TO BRIDGE & POOP & THREE ADJACENT FRAMES AT EACH END OF BRIDGE TO EXTEND TO BRIDGE DK.

24 FRAME SPACING

21 FRAME SPACING

6x3x40 BA TO FORECASTLE ALL TO DK.

TANK FRAMES DOUBLE




C. Hill & Sons

No 13748

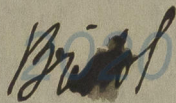
Profile

~~shell Expansion~~

 SS Annie First Entry Report  
no 10492

SS Arlette First Entry Report  
no. 10538



© 

10.5.19

Lloyd's Register  
Foundation

002241-002248-0044