

# Lloyd's Register of Shipping.

## SURVEYS FOR FREEBOARD.

### (CONDITIONS OF ASSIGNMENT.)

 Index No. \_\_\_\_\_  
 (For London Office only).

Ship's Name "FOZ DO DOURO"

Port of Survey PHILADELPHIA, PA.

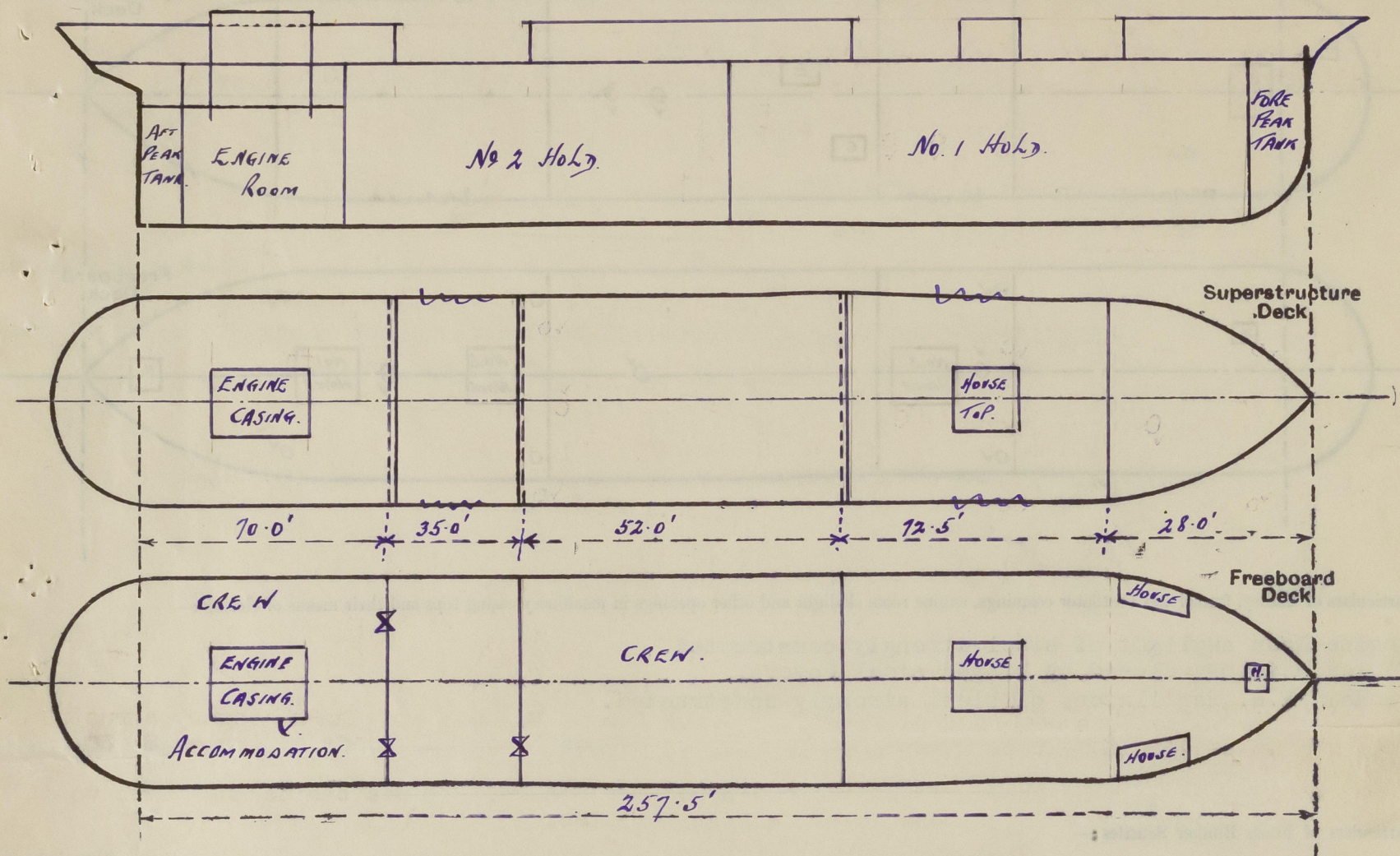
Official Number

Surveyor's Signature *H. H. Gibbs*

Nationality and Port of Registry Portuguese - Oporto

Date of Survey During Alterations

Disposition and dimensions of superstructures, trunks, deckhouses and machinery casings to be inserted in the diagrams and tabular statement:—



Particulars of Superstructures, Trunks, Casings, Deckhouses.

	Coaming	Plating	Stiffeners	Spacing	End Attachments of Stiffeners	Size of Openings	Height of Sills	Height of Casings
Poop Bulkhead ... ..	.42	.40				4'6" x 2'0"	17"	7'0"
Raised Quarter Deck Bulkhead ...								
Bridge, After Bulkhead ... ..		.30	5x3x .40L	30"	None	5'1" x 2'0"	15"	7'4"
Bridge, Forward Bulkhead ... ..		.36	6½x3x .46L	30"	Lugs T.&B.	None		7'4"
Forecastle Bulkhead ... ..								
Trunk, Aft ... ..								
Trunk, Forward ... ..								
Exposed Machinery Casings on Freeboard or Raised Quarter Decks ...								
Exposed Machinery Casings on Superstructure Decks ... ..		.36	3½x2½x .35	24"	None	None		1'9"
Machinery Casings within Superstructures not fitted with Class I Closing Appliances ... ..								
Deckhouses on Flush Deck Ships ...								

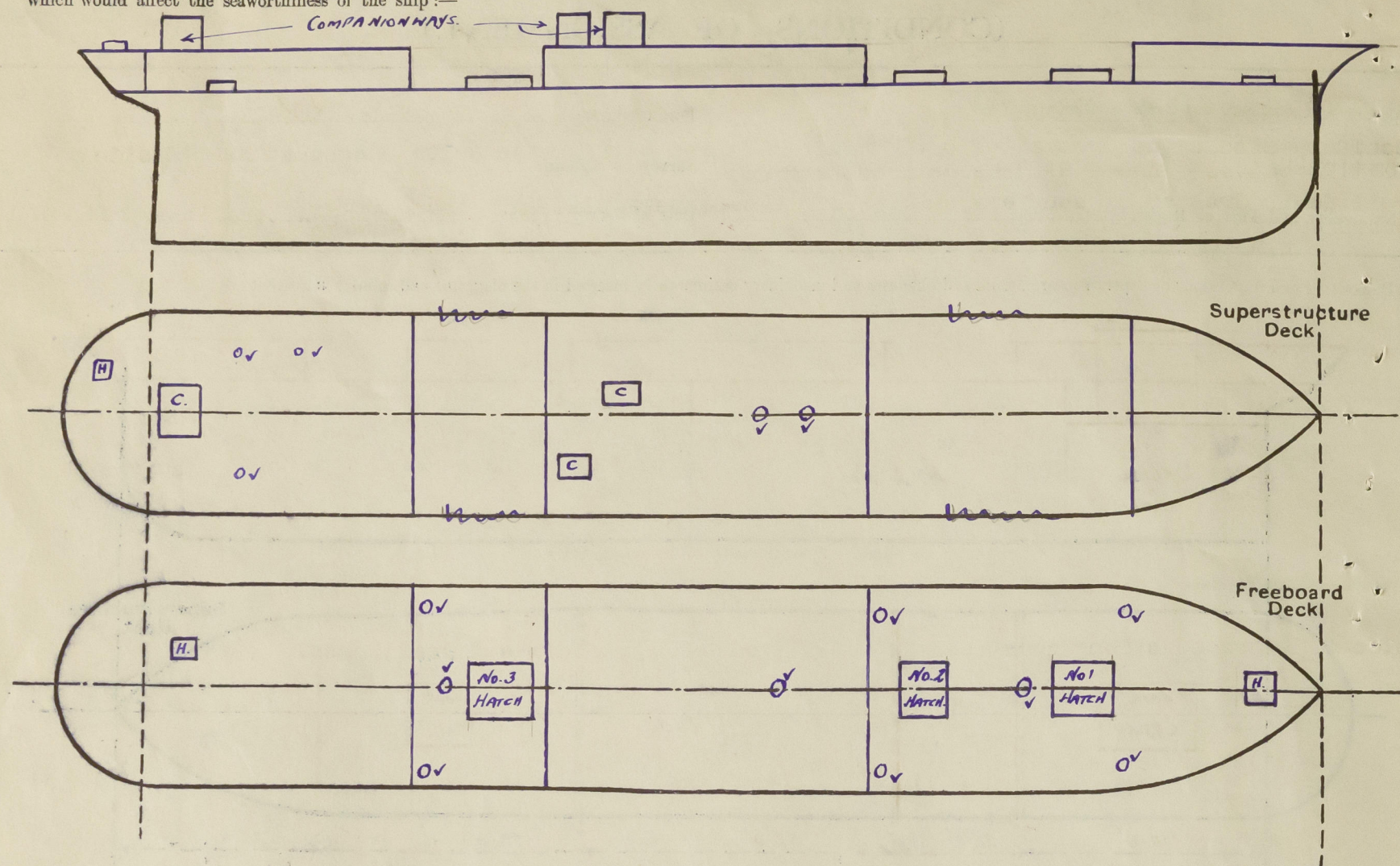
Particulars of Closing Appliances (state if capable of being manipulated from both sides).

Poop Bulkhead ... ..	Hinged Steel Watertight doors capable of being operated from both sides.
Raised Quarter Deck Bulkhead ...	
Bridge, After Bulkhead ... ..	Hinged steel door capable of being operated from both sides.
Bridge, Forward Bulkhead ... ..	No openings
Forecastle Bulkhead ... ..	Open
Exposed Machinery Casings on Freeboard or Raised Quarter Decks ..	
Exposed Machinery Casings on Superstructure Decks ... ..	No openings in sides of casings.
Machinery Casings within Superstructures not fitted with Class I Closing Appliances ... ..	
Deckhouses on Flush Deck Ships ...	



# PARTICULARS OF PROTECTION TO OPENINGS, ETC.

The following diagrams should be used to indicate the positions of cargo and coaling hatchways, gangway, cargo and coaling ports, ventilators, companionways, etc., which would affect the seaworthiness of the ship:—



Particulars of fiddle, funnel and ventilator coamings, engine room skylight and other openings in machinery casing tops and their means of closing:—

Engine Room skylight of steel strongly constructed.  
Fiddle openings closed by hinged steel covers.  
Funnel, E.R. ventilators of steel strongly constructed.

Particulars of Flush Bunker Scuttles:—

None

Particulars of Companionways:— 2 companionways on bridge deck each 6'6" x 3'7" x 6'11" of steel, strongly constructed each fitted with a strong wood door capable of being operated from both sides - sill 13 1/2" above wood deck.  
Similar companionway on poop deck leading to saloon.

Particulars of Ventilators in exposed positions on freeboard and superstructure decks:—

## Forward Well

2 ventilators 6'6" x .30 coaming x 12" dia. To Tw. Decks, coamings stayed to forecable deck.  
1 ventilator 28" x .30 coaming x 18" dia. To hold and tween decks.  
2 ventilators 33" x .30 " x 17" " To hold.

## Bridge Deck

1 ventilator 30" x .30 coaming x 18" dia. to Hold.  
1 " 12" x .30 " x 12" " to Accommodation.

Ventilators closed by wood plugs and canvas covers.

## After Well

2 ventilators 30" x .30 coaming x 17" dia. to Hold.  
1 " 30" x .30 " x 15" " " "

3 cowl vents on poop 36" coaming x .25 x 9" dia. to accommodation.

Particulars of Air Pipes in exposed positions on freeboard, raised quarter, or superstructure decks:—

Air pipe to Fore Peak 2" dia. x 18" above deck - closed by wood plug.  
2 air pipes to oil fuel tanks 4" dia. x 60" above wood deck.  
2 air pipes to F.W. Tanks 4" dia. x 75" above wood deck.

Closed by hinged steel covers and gauzes.

Particulars of Gangway Cargo and Coaling Ports:—

None

Particulars of Scuppers and Sanitary Discharge Pipes:—

Sanitary discharges from after accommodation fitted with bronze valve chests at ship's side with N.R. valves - about 2'6" below freeboard deck.

Well decks drained by scuppers cut through sheerstrake plating.

Overflows from fore and after peak tanks led above Freeboard deck and fitted with N.R. Valves.

Particulars of Side Scuttles:—

Side Scuttles of strong construction and fitted with hinged steel deadlights.

Vertical distance of Sill of lowest Side Scuttle above top of keel 30'3"

Particulars of Guard Rails:— Rails and stanchions around poop bridge and forecable decks, 2 tier with Teak rail on top. Stanchions 4'6" apart.  
Well decks protected by strong steel bulwarks.

Particulars of Gangways, Lifelines, etc.:—

Strongly constructed gangway fitted over after well deck.

## Particulars of Freeing Arrangements.

	Length of Bulwark	Height of Bulwark	Size of Freeing Ports	Number each side	Area each side	Rule area each side
After Well ... ..	35.0'	5'2"	36" x 24"	2	12	10
Forward Well ... ..	72.5'	5'2"	36" x 24" 30" x 24"	1 2	16	14.5

State position of each freeing port ... .. { After Well:—

(F. and A. position and height above deck edge) { Forward Well:—

25'4" 6'9" Bridge  
Bulwks 4'0" 13'6" 30'6"

State whether the freeing ports are fitted with shutters, bars, or rails, and give particulars of such:— Original freeing ports fitted with hinged steel shutters - new freeing ports with horizontal bars.

Additional area where sheer is less than standard.



# PARTICULARS OF PROTECTION TO OPENINGS, ETC.

HATCHWAYS ON FREEBOARD AND SUPERSTRUCTURE DECKS.										
Description of Hatchway ... ..			No.1	No.2	No.3	Under Fo'cle				
Dimensions of Hatchway ... ..			6'x6'	20'x12'	12'x10'	2'10"x2'6"				
COAMINGS	Height above Deck ...		24½"	25"	25"	15½"				
	Thickness { Sides ...		.38							
	Stiffeners { Ends ...		None							
	Brackets, Stays ...		None							
HATCH BEAMS	Number ... ..			1 10'0"	1 6'0"					
	Spacing ... ..									
	Scantling and Sketch ...									
	Bearing Surface ...		None	None	None					
FORE AND AFTERS	Number ... ..		1	3	1					
	Spacing ... ..		at center	3'0"	at center					
	Unsupported Lengths ...		5'7½"	9'7"	5'7"					
	Scantling* and Sketch ...									
	Sides D x B			7½"x5¾"						
	Center D x B		6"x7½"	7"x7¾"	6"x7½"					
Bearing Surface ...		2¼"	2¼"	2¼"						
HATCH COVERS	Material ... ..		Wood							
	Thickness ... ..		2½"							
	How fitted ... ..		Athwart							
	Bearing Surface ...		1½"	1-5/8"	1½"	2"				
Spacing of Cleats ... ..			22"	25"	22"	18"				
Number of Tarpaulins ... ..			2	2	2	2				
<p>*Are wood fore and afters steel shod at all bearing surfaces? Yes</p> <p>Are battens and wedges efficient and in good condition? Yes</p> <p>Are tarpaulins in good condition and in accordance with rule requirements? Yes</p> <p>Are lashings provided in accordance with rule requirements? Ringbolts for lashings fitted.</p>										

Particulars of any special features:—

This vessel has been fitted with Twin Screw Diesel Engines and the necessary structural alterations made to the Hull, including the fitting of new steel bulkheads at frames 8, 34, 77.

The new tonnages have not yet been measured officially. It was stated that this would be done at Lisbon by the Portuguese Government Authorities.

Endorsement at first survey and at surveys for renewal of Certificate:—

The fittings and appliances are in accordance with the particulars shown on this form (or as now modified) and are in good condition.

*H.H. Gibbs*

Fee - \$100.00



© 2020

Lloyd's Register  
Foundation