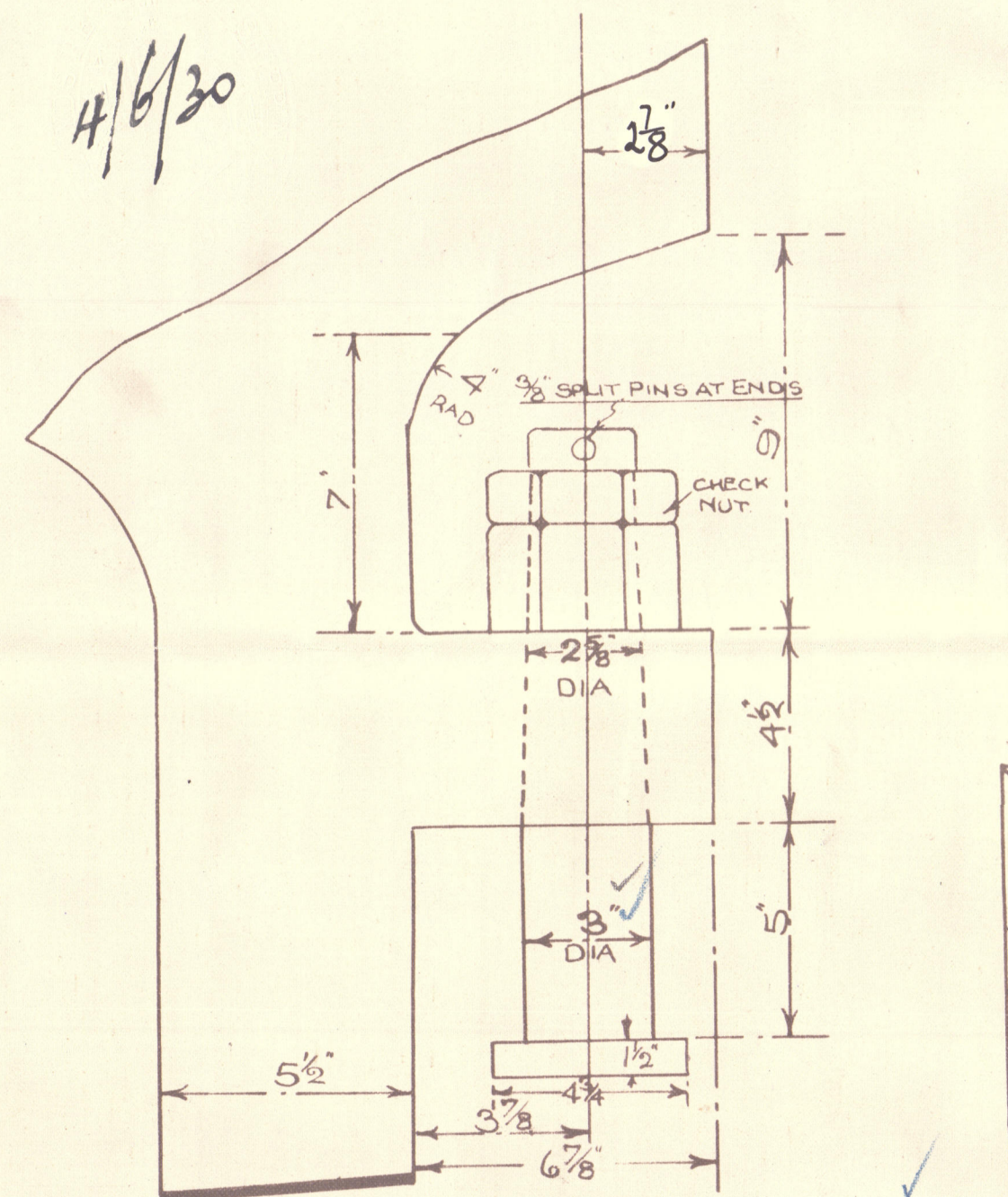


4/6/30

RUDDER

HOLES FOR 7/8" DIARIVETS
SPACED 5" DIA³ APART

SCALE 3/4" = 1 FOOT



NOTE: THESE PINTLES ARE LOOSE THE CENTRES ARE TO BE KEPT IN LINE WITH CENTRES OF HOLES IN STERN POST TOP PINTLE FITTED WITH LOCKING PIECE ALL PINTLES TO HAVE CHECK NUTS & 3/8" DIA SPLIT PINS AT ENDS

NUMERALS FOR RUDDER

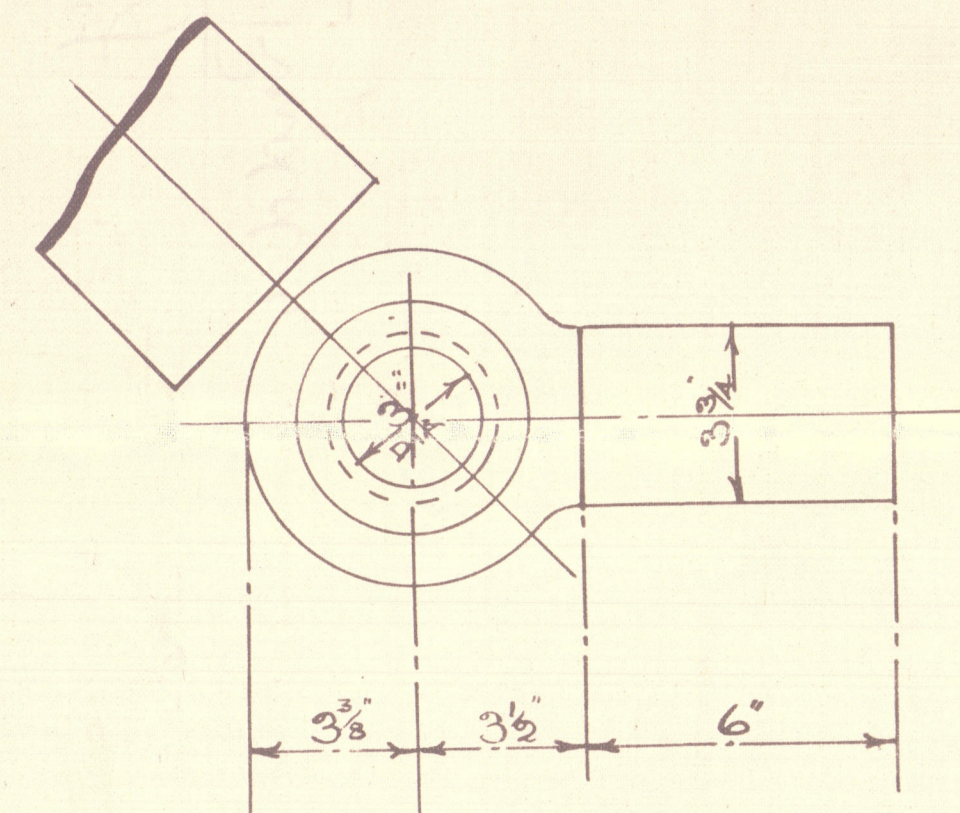
AREA TAKEN ABAFT FOR² EDGE OF MAIN PIECE 46 1/2

C.G. OF RUDDER ABAFT CENTRE OF PINTLES 2.2

A x D = 101.2

SPEED NOT EXCEEDING 12 KNOTS

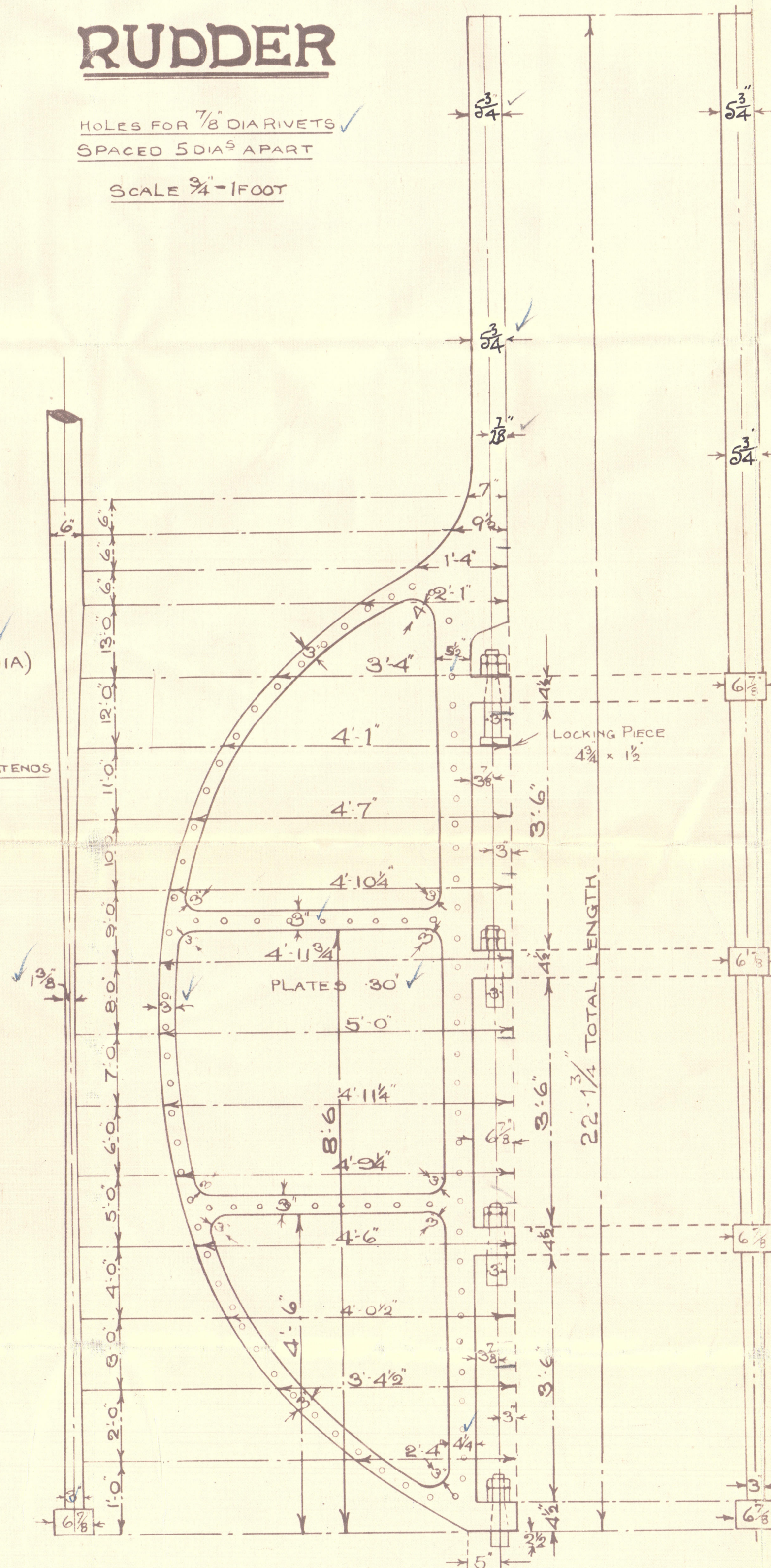
STEERING CHAIN 1/16" DIA
RODS 1/8" DIA



RUDDER TO KEEL OVER TO AN ANGLE OF 45° EXACTLY

SUBMITTED TO LLOYDS
APPROVED BY

Nº 555.

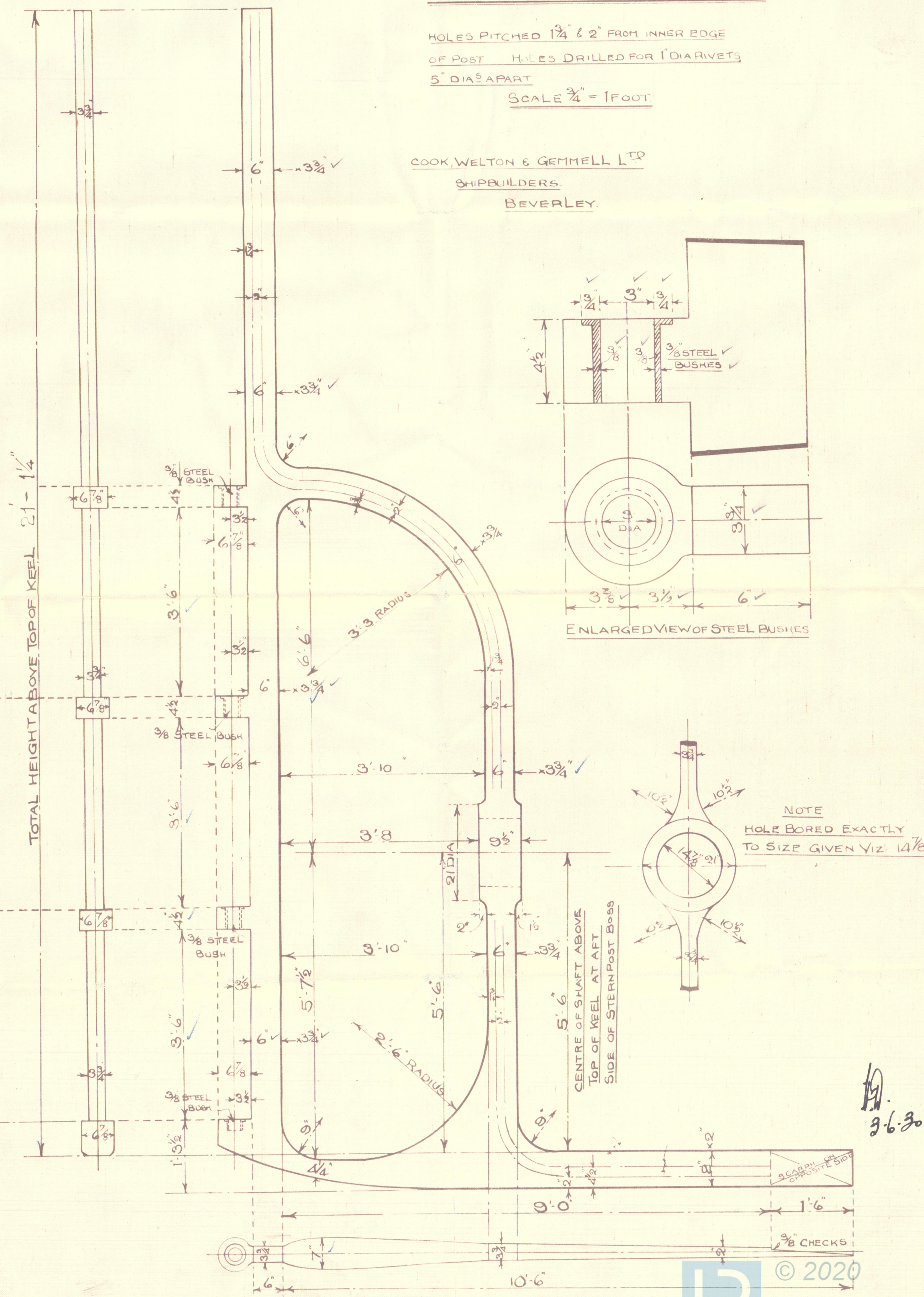


STERNFRAME.

HOLES PITCHED 1 1/4" & 2" FROM INNER EDGE
OF POST HOLES DRILLED FOR 1" DIARIVETS
5" DIA³ APART

SCALE 3/4" = 1 FOOT

COOK, WELTON & GEMMELL LTD
SHIPBUILDERS
BEVERLEY.



9.6.30

Cook, Wilton & Gemmell, Ltd..
Beverley

Stern frame & Rudder.

no. 555	grampian
8.8.	Kopanes ^{ex}
HULL REPORT NO.	H1316.



© 2020

Lloyd's Register
Foundation

00222 002240 0142