

— N^o 1548. —

— PROFILE & DECK PLAN. —

— SCALE 1/8" = 1 FT. —

— PRINCIPAL DIMENSIONS. —

LENGTH ON DEEPEST LEAD LINE 220'-0"
BEAM M^d 34'-0"
DEPTH 16'-6"
1/2 GIRTH AT MIDSHIP FRAME 31'-0"

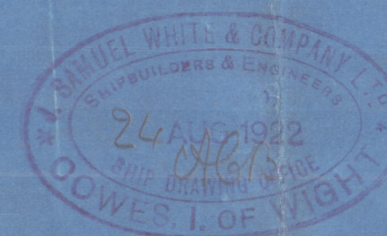
— EQUIPMENT P. —

2 BOWER	ANCHORS (STOCKLESS)	2 1/2 CWTs	✓	COLLECTIVE	✓
1	ANCHOR (")	2 1/2	✓	WT 73 CWTs	✓
1	STREAM	6 1/2	✓		
1	KEDGE	3 1/2	✓		
210	FMS STUD LINK CHAIN CABLE	1 1/2 DIAM.	✓		
75		15/16	✓	OR 3/2 STEEL WIRE	✓
90	STEEL WIRE TOWLINE	3/4	✓	OR 10 HEMP	✓
90	HEMP HAWSER	6	✓	OR 2 1/4 STEEL WIRE	✓
90		5	✓	OR 3/4	✓

EQUIPMENT NO.
INCREASED 30% IF
TRADING TO NORTHERN
PARTS OF NORWAY

DET. NORSE VERITAS NUMERALS
TRANSVERSE N^o (1/2 B + D + 1/2 C) = 65.25
LONGITUDINAL N^o L (1/2 B + D + 1/2 C) = 14.355
TOPSIDE N^o (1/2 B + D + 1/2 C) = 25.520 FOR MAIN DK
1/2 L 13.33 1/2 L (1/2 B + D + 1/2 C) 16.924 R 45 DK
1/2 L 13.33 IN WAY OF UPPER DECK
1/2 L 17.5 RAISED
EQUIPMENT N^o 16.217

FREEBOARD PARTICULARS
SHEER FORWARD 6'-10"
AFT 2'-10"
UNDER DK TONNAGE EXCLUSIVE OF R&D 886
INCLUDING R&D 1024
COEFFICIENT OF FINENESS .814
ERECTIONS
LENGTH OF R&D & BRIDGE 126'-2 1/4"
FORECASTLE 21'-3"



— SIDE HOUSES —

PLATING 26
STIFFENERS 2 1/2 x 2 1/2 x 24 SP 30
DECK BAR 2 1/2 x 2 1/2 x 26

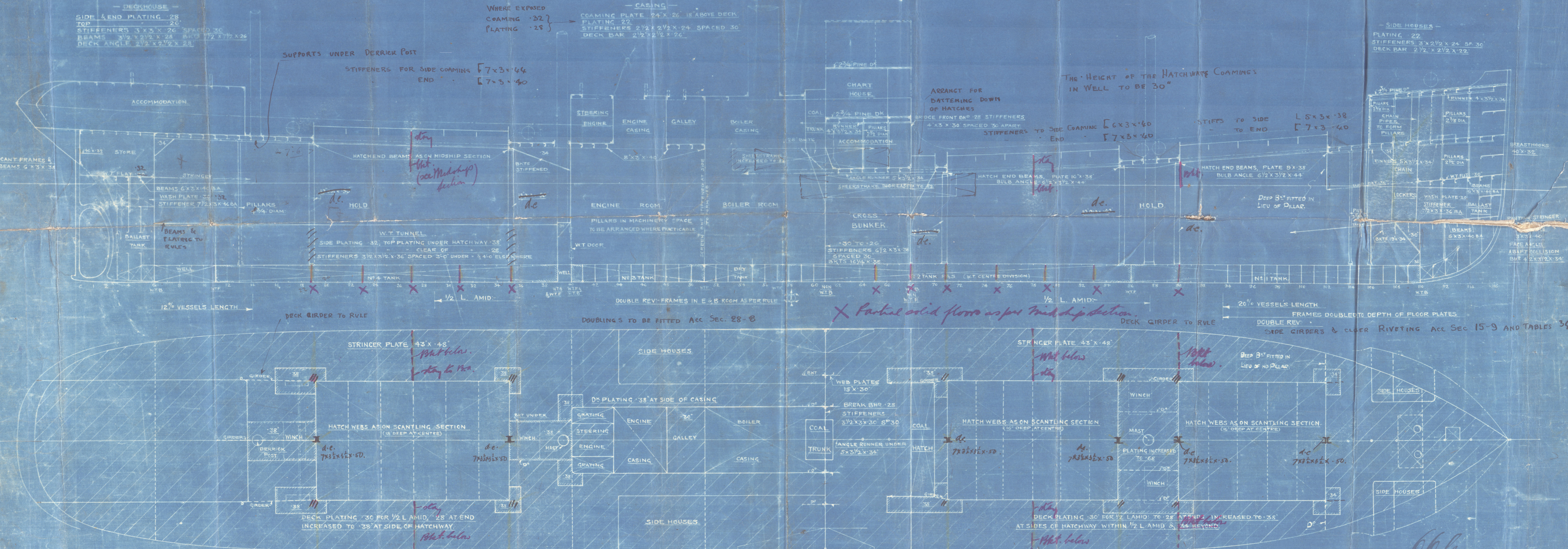
— CASING —

COAMING PLATE 24 x 26 18" ABOVE DECK
PLATING 22
STIFFENERS 2 1/2 x 2 1/2 x 24 SPACED 30
DECK BAR 2 1/2 x 2 1/2 x 26

WHERE EXPOSED
COAMING .22
PLATING .25

Pillars under deck houses Windlass and Winches
to Surry on sales factor

THE HEIGHT OF THE HATCHWAY COAMINGS
IN WELL TO BE 30"

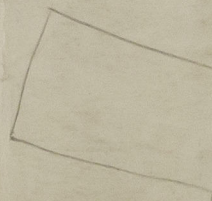
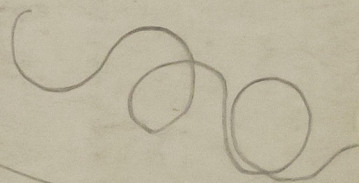
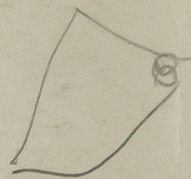


X Partial solid floor as per midship section.

DECK PLATING AT SIDES OF OPENINGS TO BE INCREASED
NOT LESS THAN ACC SEC 22-4

Obf
5.10.22

1248
Profile & D.P.
101



© 2020

Lloyd's Register
Foundation

Projila
Dech

"Atlas"

1877

Alintree

"Golda"
ex

§/s Alintree (for "Atlas")

London Rpt 85977.

© 2020

Lloyd's Register

002252-002240-0055