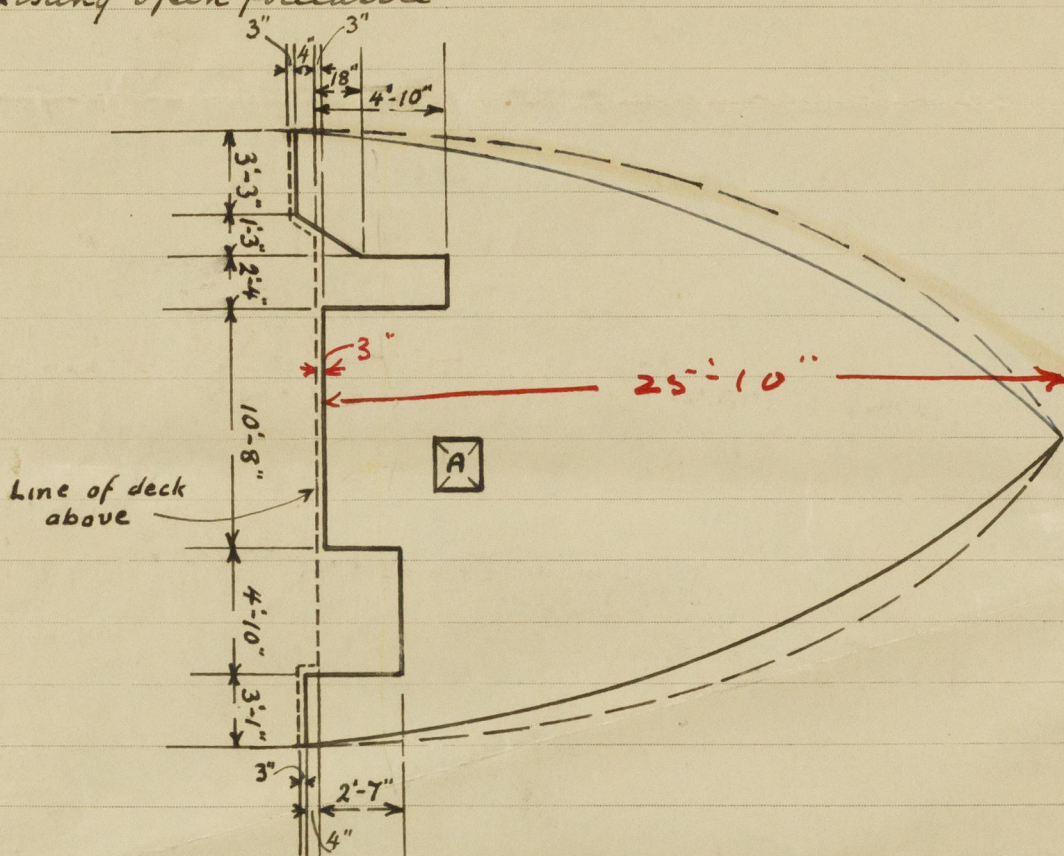


Lloyd's Register of Shipping.

Ship's Name *Clewbar*Official No. *109684*

Memorandum of alterations reported since ship was surveyed for assignment of Load Lines in

Alteration of crews accommodation from lower forecastle space to existing open forecastle



The existing companionway to fore peak space & trimming hatch at fore end of hold, port side, dispensed with & openings in upper deck plated over.

Forecastle deck extended making rule length of forecastle 26.2 ft.

Steel bulkhead erected across existing open forecastle (see above sketch), coamings plating .25", stiffeners 2 1/2" x 2 1/2" x .26" spaced 30" apart, openings two at 5'-0" x 1'-9" closed by steel doors operated from both sides, two at 5'-0" x 2'-0" closed by solid wood doors 1 1/2" thick operated from both sides, height of sills 18", height of casing 7'-3".

Four of the existing sidelights in the lower forecastle space dispensed with & openings in shell closed with riveted & welded steel plates. Additional sidelights with hinged deadlights fitted in forecastle.

Additional ventilators fitted on forecastle deck leading to new accommodation below, coamings 36" high to Rule thickness, wood plugs & canvas covers provided.

Fore peak tank air pipe extended to 18" above forecastle deck, canvas cover provided.

A 2'-0" x 2'-0" flush hatch marked "A", provided with hinged wood cover 2 1/2" thick, fitted to the upper deck leading to the space below, now converted to a store space, & the new chain locker strongly constructed of wood fitted in this space.

A copy of the above memorandum will be placed on board the vessel on completion of the alterations. The annual load line survey was carried out in May 1942. The sills of the sidescuttles in the lower forecastle space are estimated to be 1'-4" above the tropical load line.

R. Munton

Belfast.

August 1942.

His submission regarding
assurances and that his
assurances are given that his
allusions to the fact that
will be made at the time of the
of the present arrangement for the
the Secretary of the Board of
of the fact that the
live to the end of the
the future of the
as early as possible
It will be helpful in
allusions of his character
as forwarded



© 2021

Lloyd's Register
Foundation