

26 MAY 1941

1. 24-17 ALTERED TO SHUT DOWN ROCKET
2. 24-17 BULKHEAD INCREASED TO 4" TOP
3. 9-17 BULKHEAD INCREASED TO 4" TOP
4. 10-17 BULKHEAD INCREASED TO 4" TOP
5. 10-17 BULKHEAD INCREASED TO 4" TOP
6. 10-17 BULKHEAD INCREASED TO 4" TOP

TO 100 AT ALL LOIDS
DIMENSIONS

LENGTH B.P.	325.6
BREADTH MOULDED	55.0
DEPTH MOULDED TO SHELTER DECK	34.11
DEPTH d	22.5
$\frac{1}{2}d = 11.33$ TO SHELTER DECK	
$\frac{1}{2}d = 9.32$ TO BRIDGE DECK	
TRANSVERSE NUMBER = $55 + 27 =$	82
LONGITUDINAL NUMBER = $62 \times 395.5 =$	24531
EQUIPMENT NUMBER = $32431 + 4033 =$	36464

EQUIPMENT LETTER Z

2 BOWER ANCHORS STOCKLESS EACH	55 CWTs
1 BOWER ANCHOR STOCKLESS	54 CWTs
1 STREAM ANCHOR EX. STOCK	17 CWTs
1 KEDGE ANCHOR EX. STOCK	7 CWTs
270 FATHOMS 2" STUD CHAIN CABLE	
90 FATHOMS 4" FLEXIBLE STEEL WIRE ROPE (STREAM)	
120 FATHOMS 4" FLEXIBLE STEEL WIRE ROPE (TOWING)	
180 FATHOMS 8" MANILA HAWSER	
180 FATHOMS 7" MANILA HAWSER	

SCANTLING

STEM	10" x 24"
PROPELLER POST	10" x 7"
RUDDER POST	9" x 7"
BOSS PLATING	74 THICK

PARTICULARS FOR FREE BOARD

SHEER AT STEM	1/2" FROM STEM
LOWEST POINT OF SHEER AMIDSHIP	1/2" FROM STEM
SHEER 3/4" FROM STERN POST	1/2" FROM STEM
AT STERN POST	1/2" FROM STEM
NO SHEER FOR 180' 0" AMIDSHIP	
FORECASTLE 36' 0" LONG	

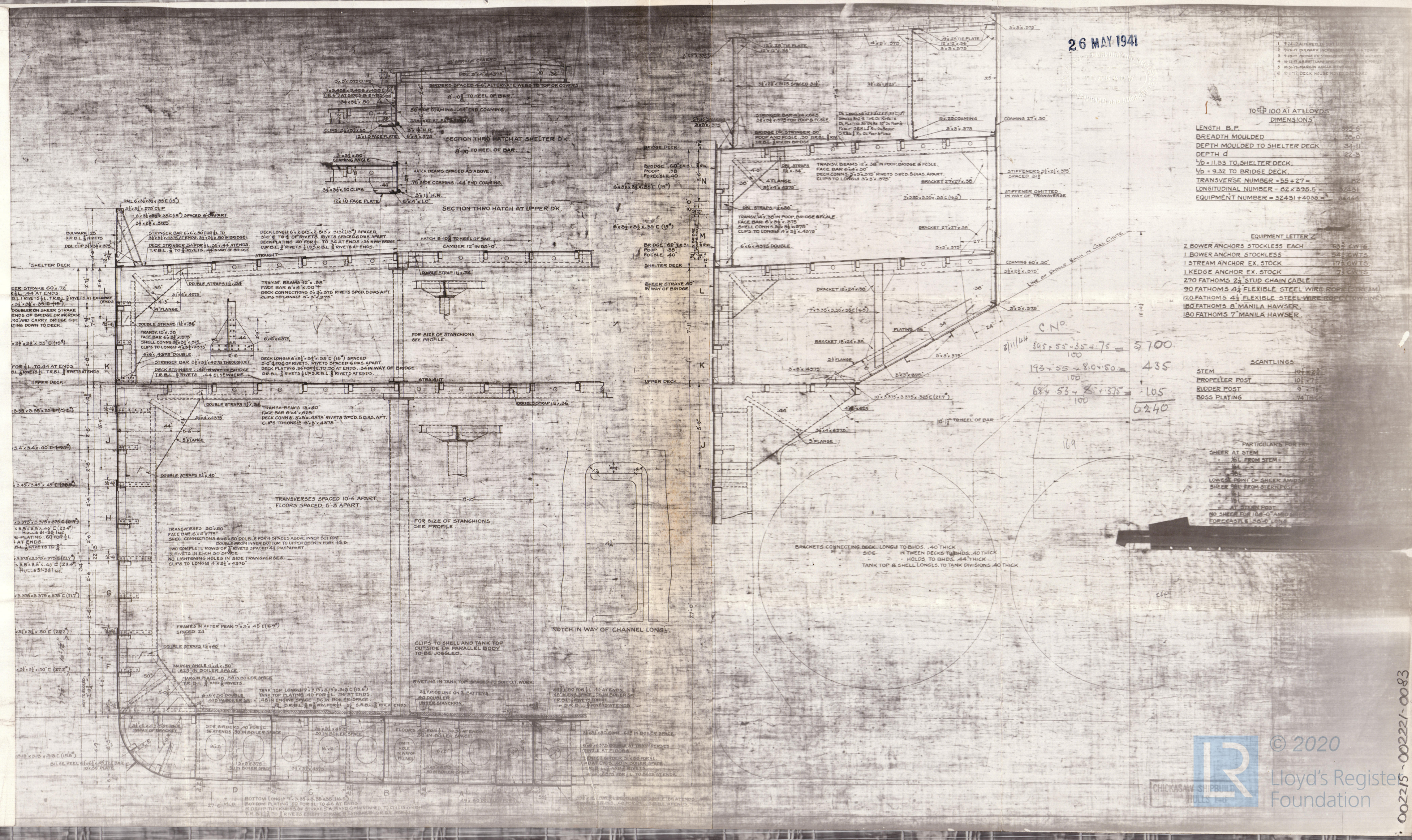
8/11/41

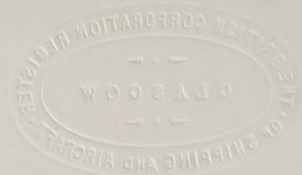
$$\frac{895 \times 55 \times 35 + 75}{100} = 5700$$

$$\frac{193 \times 55 \times 8.0 \times 50}{100} = 435$$

$$\frac{684 \times 53 \times 8.1 \times 375}{100} = 105$$

$$5700 + 435 + 105 = 6240$$





1 /
Midship Section

EMPIRE MAGPIE 182 1/2

new gun design

Section

Bellissima

Midship Section

Empire Magpie