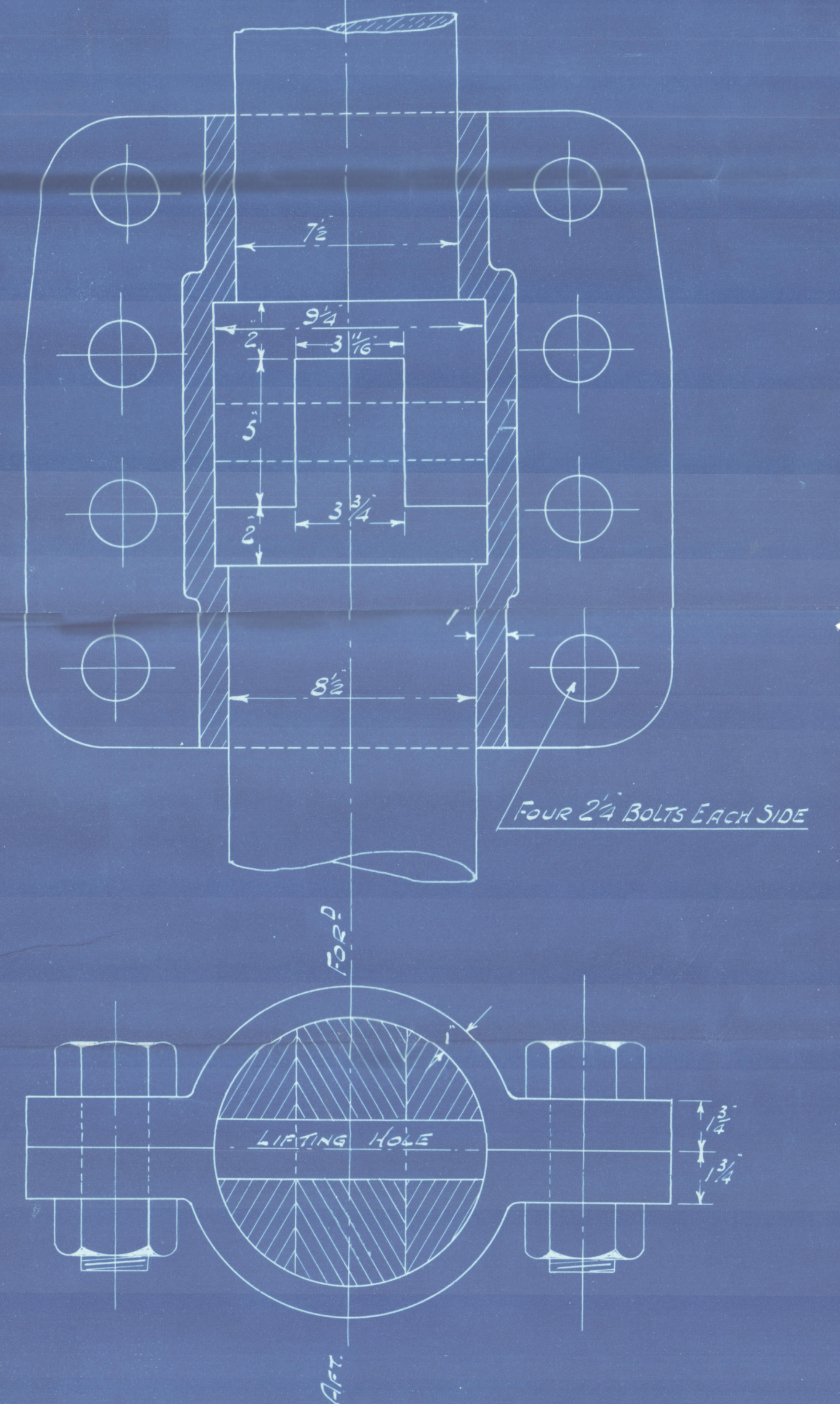
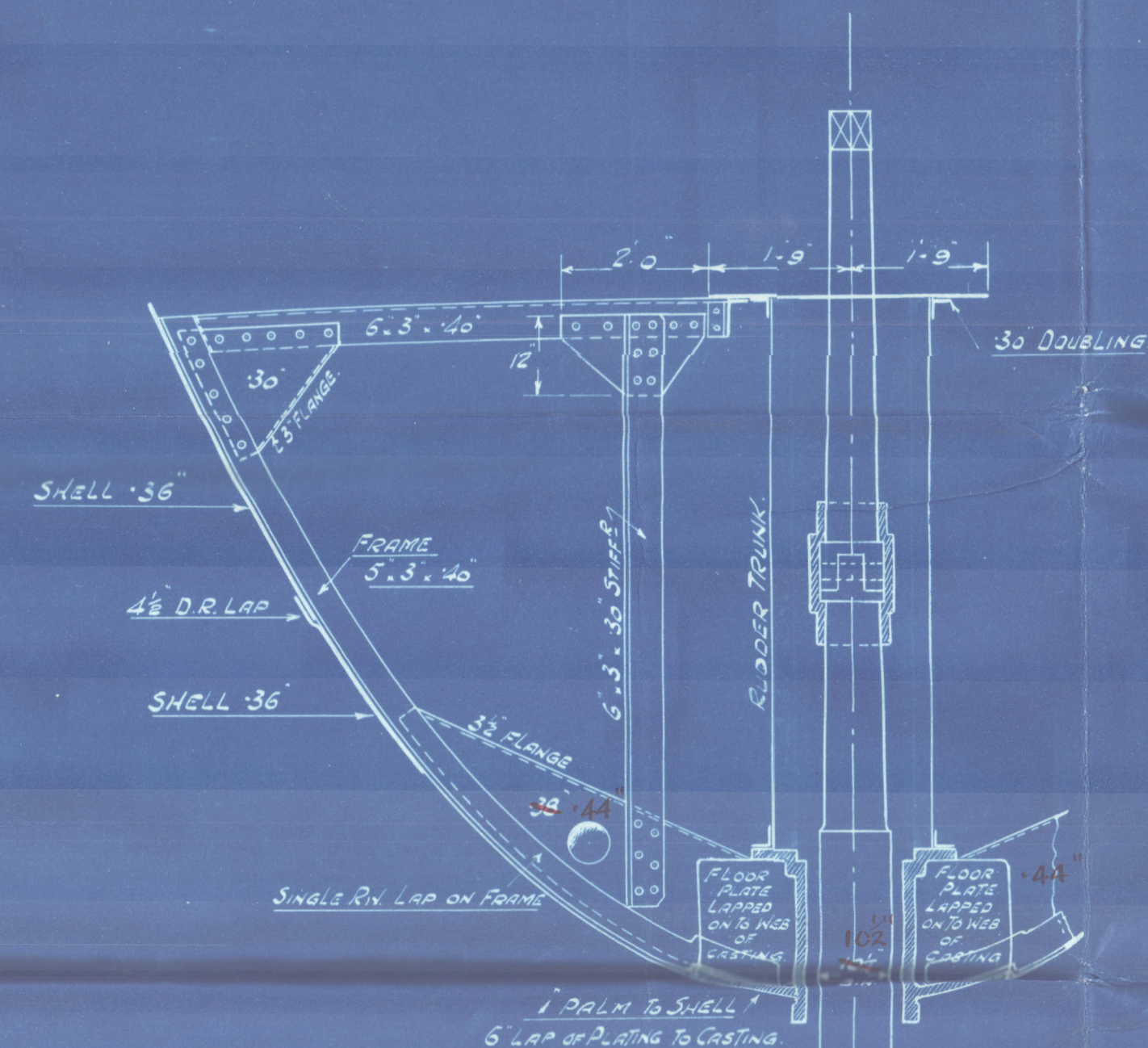
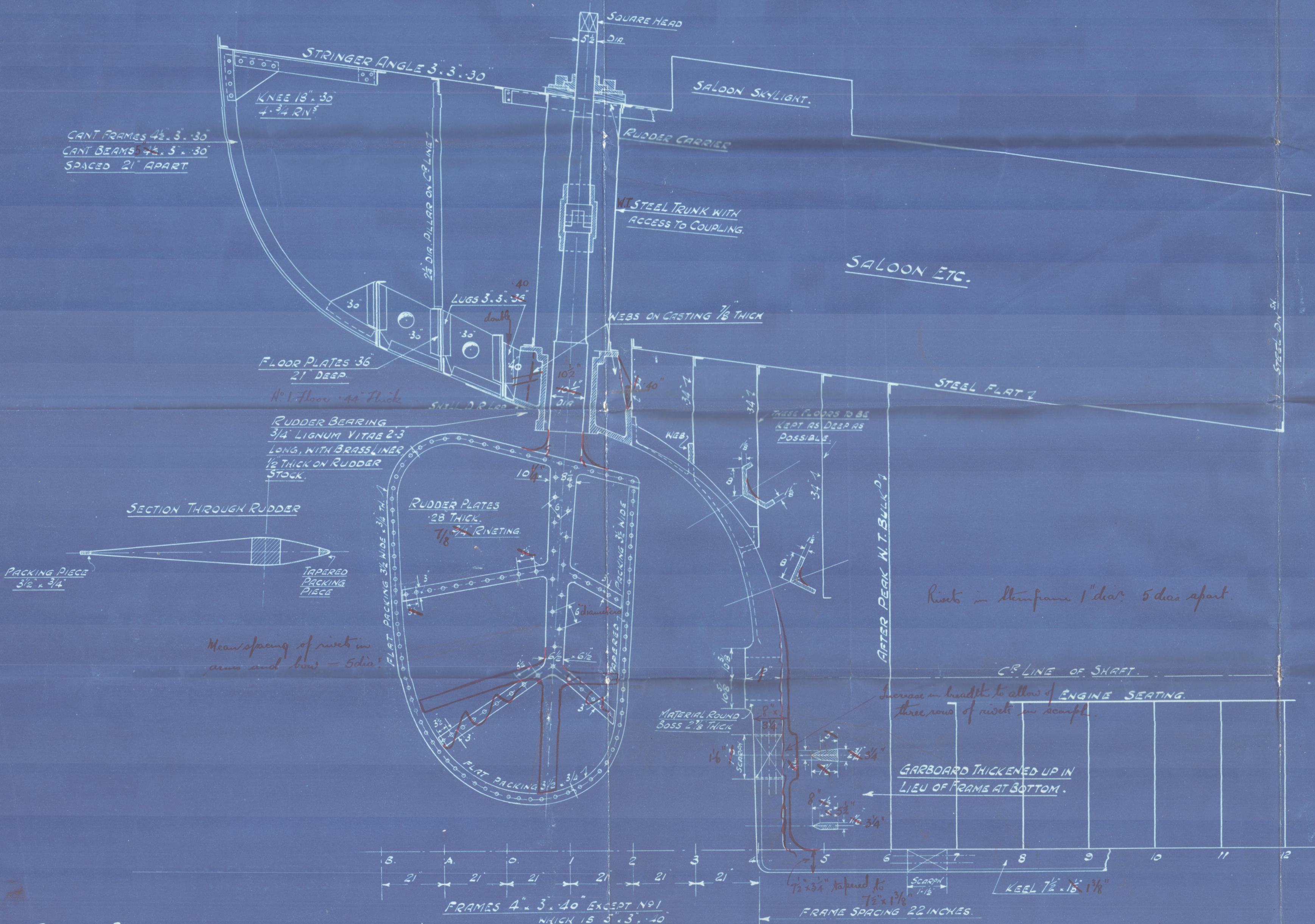


PROPOSED STEAM TRAWLER.

ARRANGEMENT OF CRUISER STERN & SPADE RUDDER.

SCALE 1/2" = 1 FOOT.

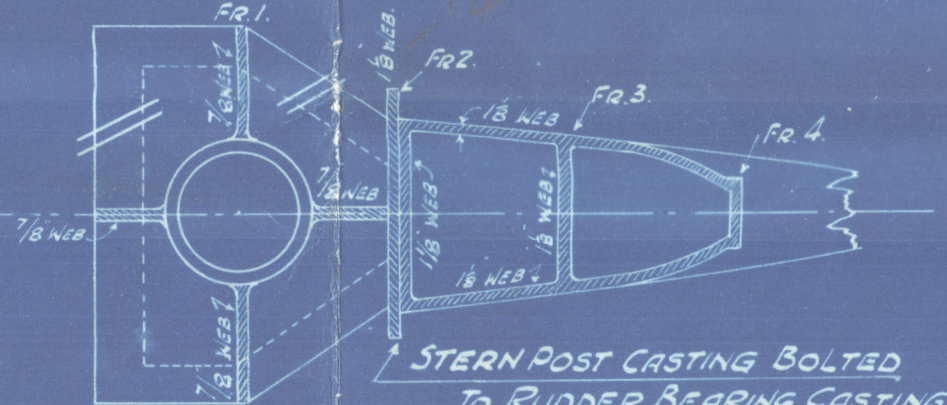
LENGTH B.P. 150'-0"
BREADTH MLD 26'-1"
DEPTH MLD 15'-0"



DETAIL OF RUDDER STOCK COUPLING.

— RUDDER PARTICULARS. —

AREA OF RUDDER 62 SQUARE FEET.
C.G. FORE&AFT 1.7 FT. AFT OF CENTRE OF RUDDER STOCK.
C.G. VERTICAL 4.56 FT. BELOW BOTTOM OF BEARING.
ASSUMED C^o OF PRESSURE AHEAD IS 62 FT. AFT OF C^o OF STOCK AT 35° HELM.
"DO" "ASTERN IS ABOUT 2.66 FT. AFT "DO" "DO."
SPEED 11 KNOTS AHEAD, 8.25 KNOTS ASTERN.
RUDDER FRAME OF CAST STEEL OR FORGED IRON OR STEEL.



DETAIL OF CASTING
AT RUDDER BEARING.

MESSRS

SMITH'S DOCK CO^Y

PROPOSED TRAWLER.

150'-0" x 26'-1" x 15'-0"

CRUISER STERN & RUDDER.

See Foundry.

General Lloyd's

S.S. Notre Dame de France
MDB. RPT. No. 14369



© 2020

Lloyd's Register
Foundation

002194-002205-0194