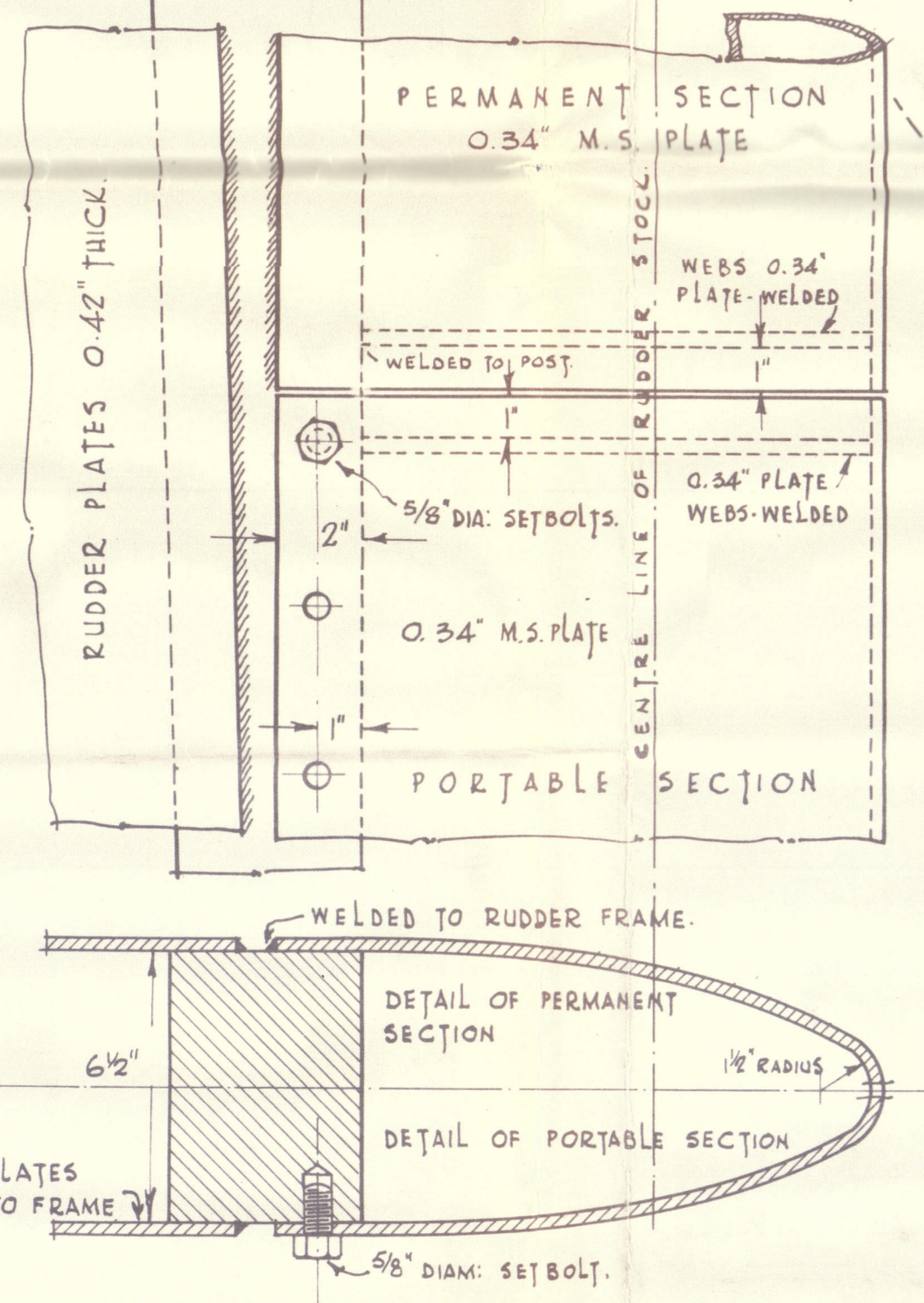
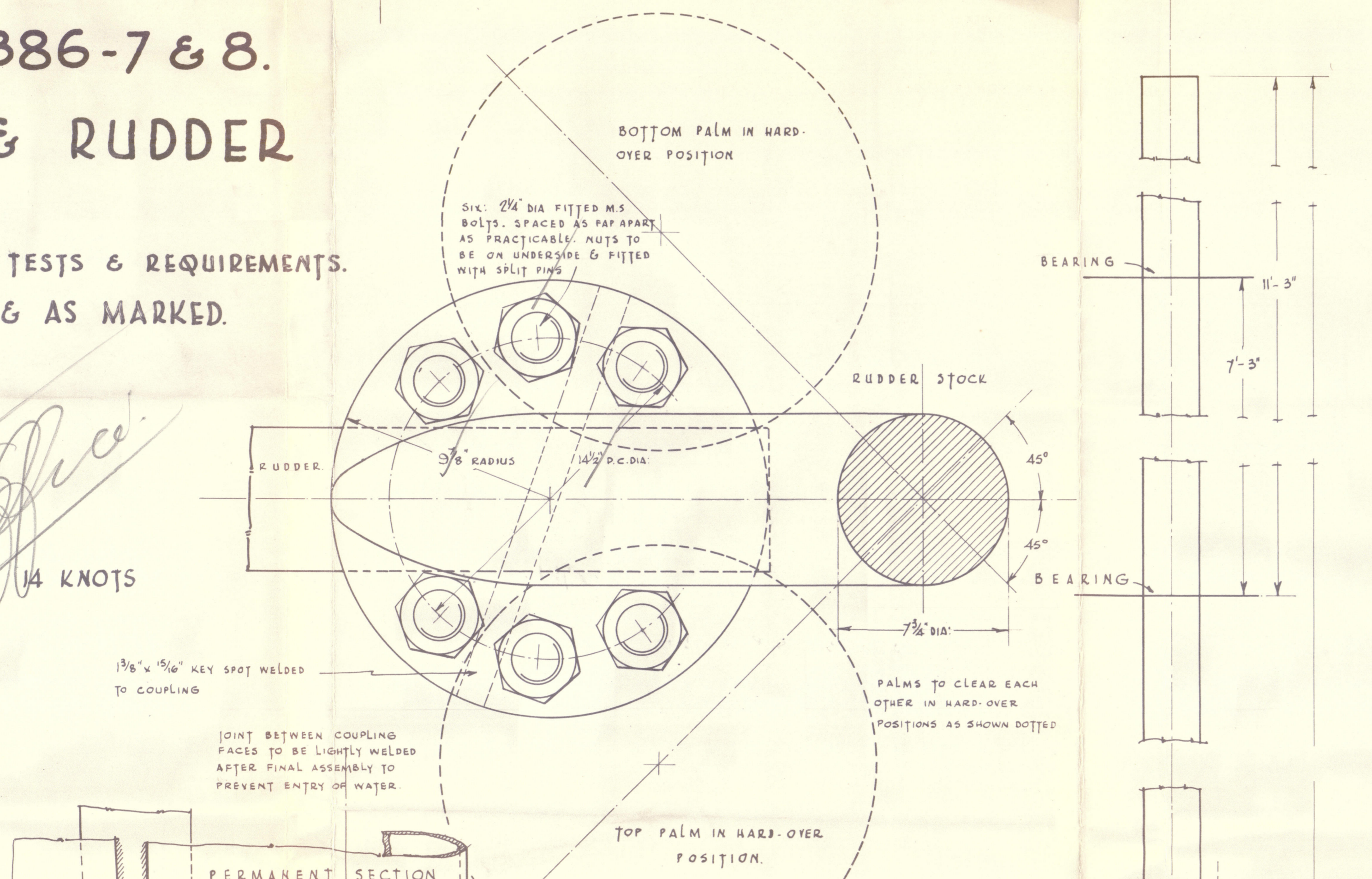


# ⑥ SHIP NOS 1386-7 & 8. STERNFRAME & RUDDER

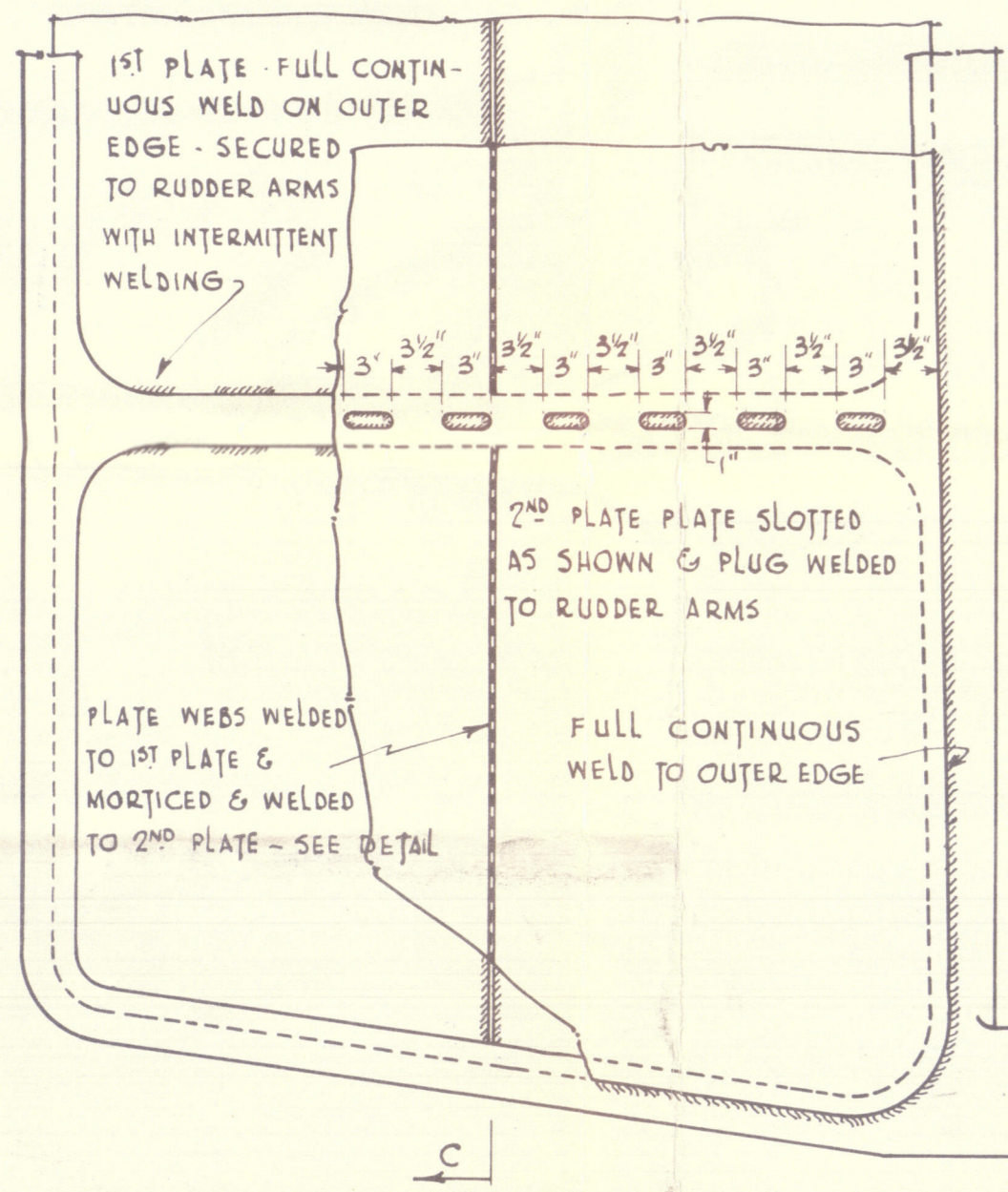
FORGED STEEL TO LLOYDS' TESTS & REQUIREMENTS.  
SCALES: 1 INCH = 1 FOOT & AS MARKED.

A = 58.95 Sq. Ft.  
D = 3.25 Ft.  
A x D = 191.59  
SPEED NOT EXCEEDING 14 KNOTS

Length S.P. - 135'



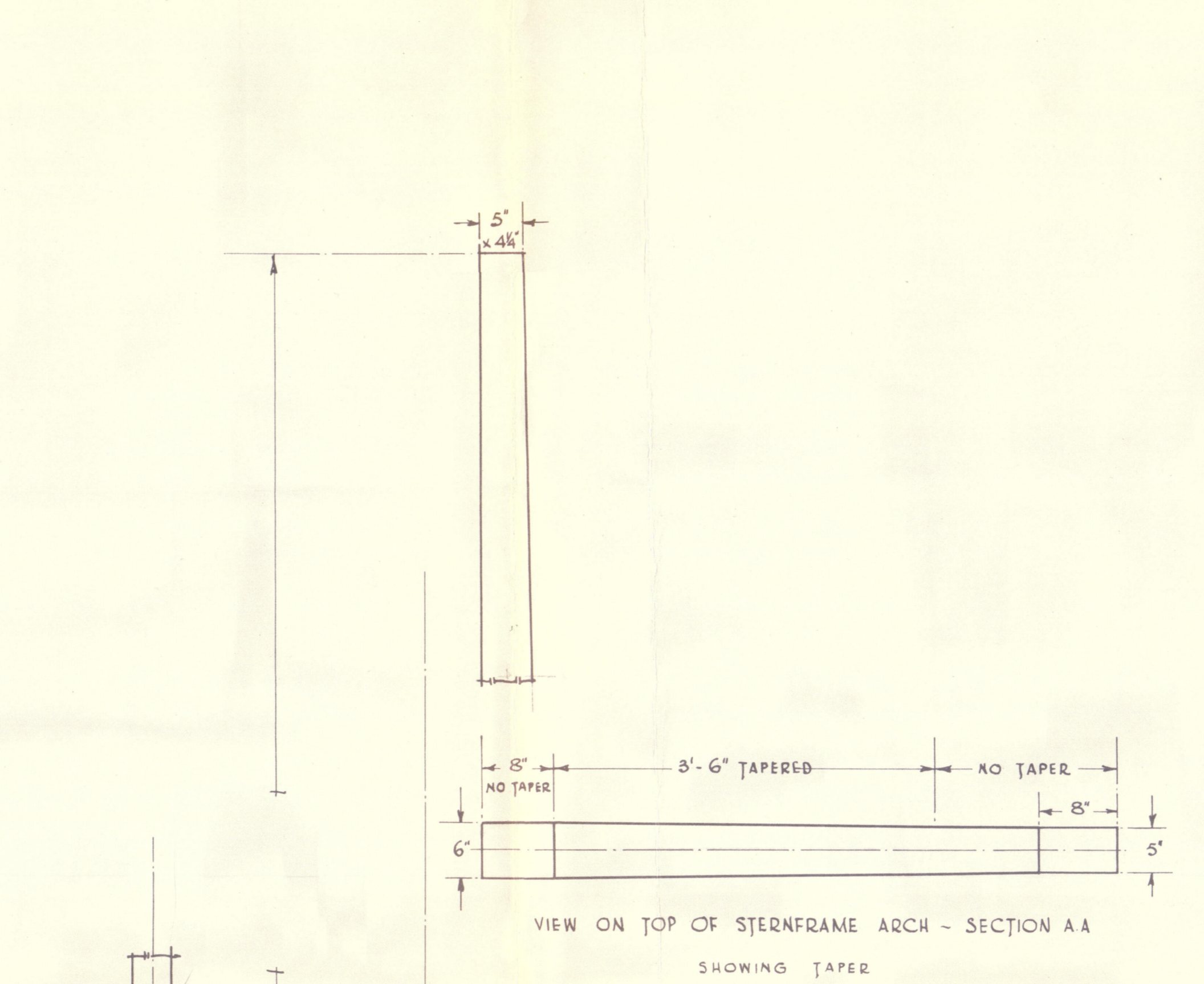
DETAIL OF FAIRING TO LEADING  
EDGE OF RUDDER  
DRAWN: QUARTER FULL SIZE.



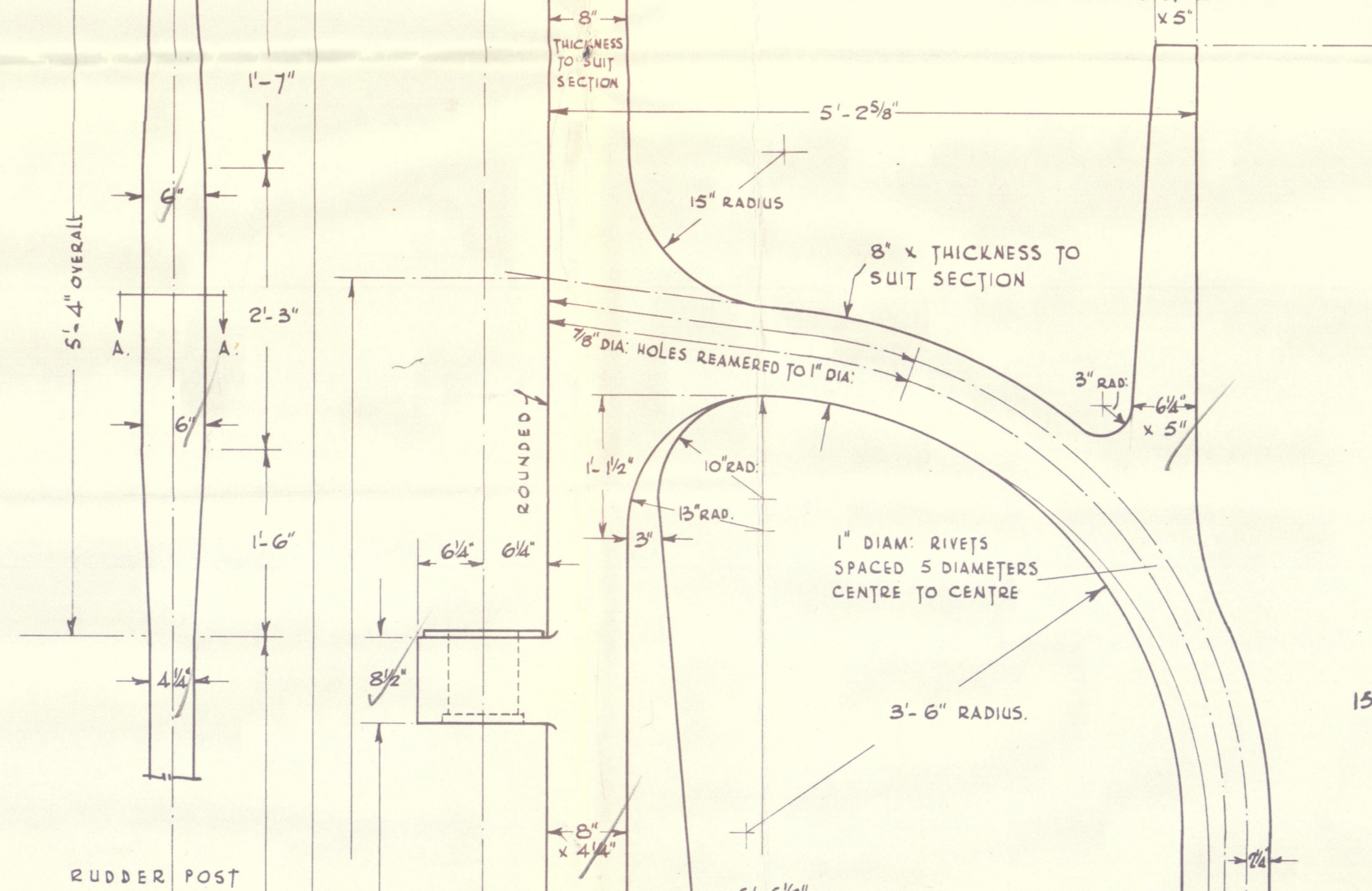
DETAIL SHOWING CONNECTION  
OF RUDDER PLATING TO FRAME.



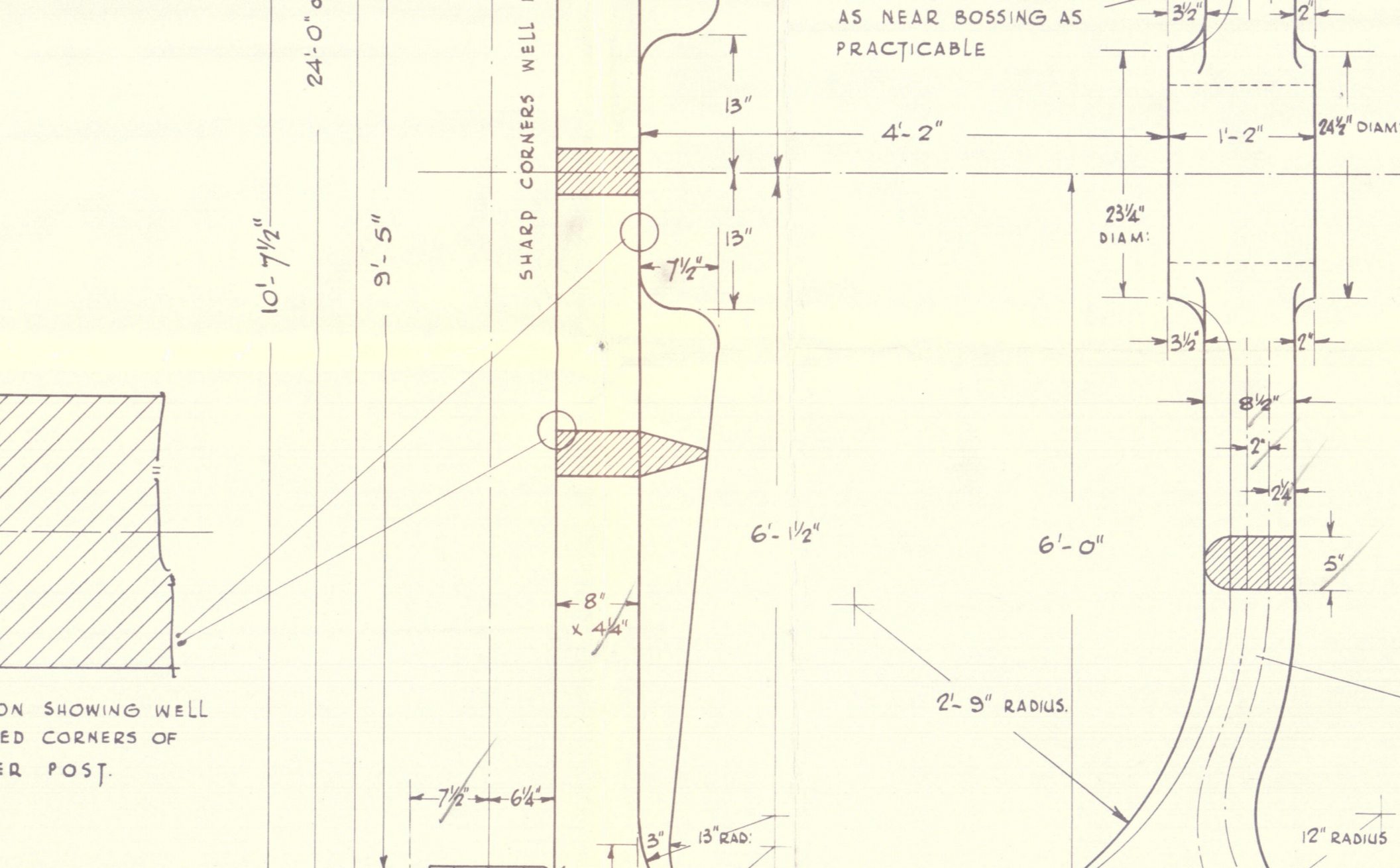
DETAIL SECTION OF RUDDER - S.B.  
SCALE: 1 1/2 INCHES = 1 FOOT



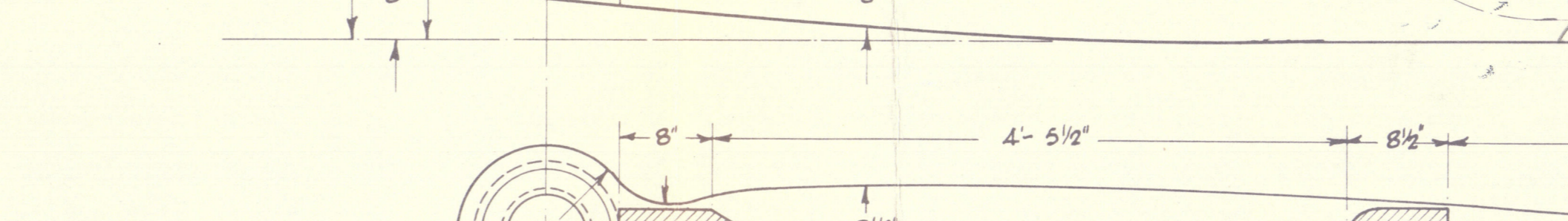
VIEW ON TOP OF STERNFRAME ARCH - SECTION AA  
SHOWING TAPER



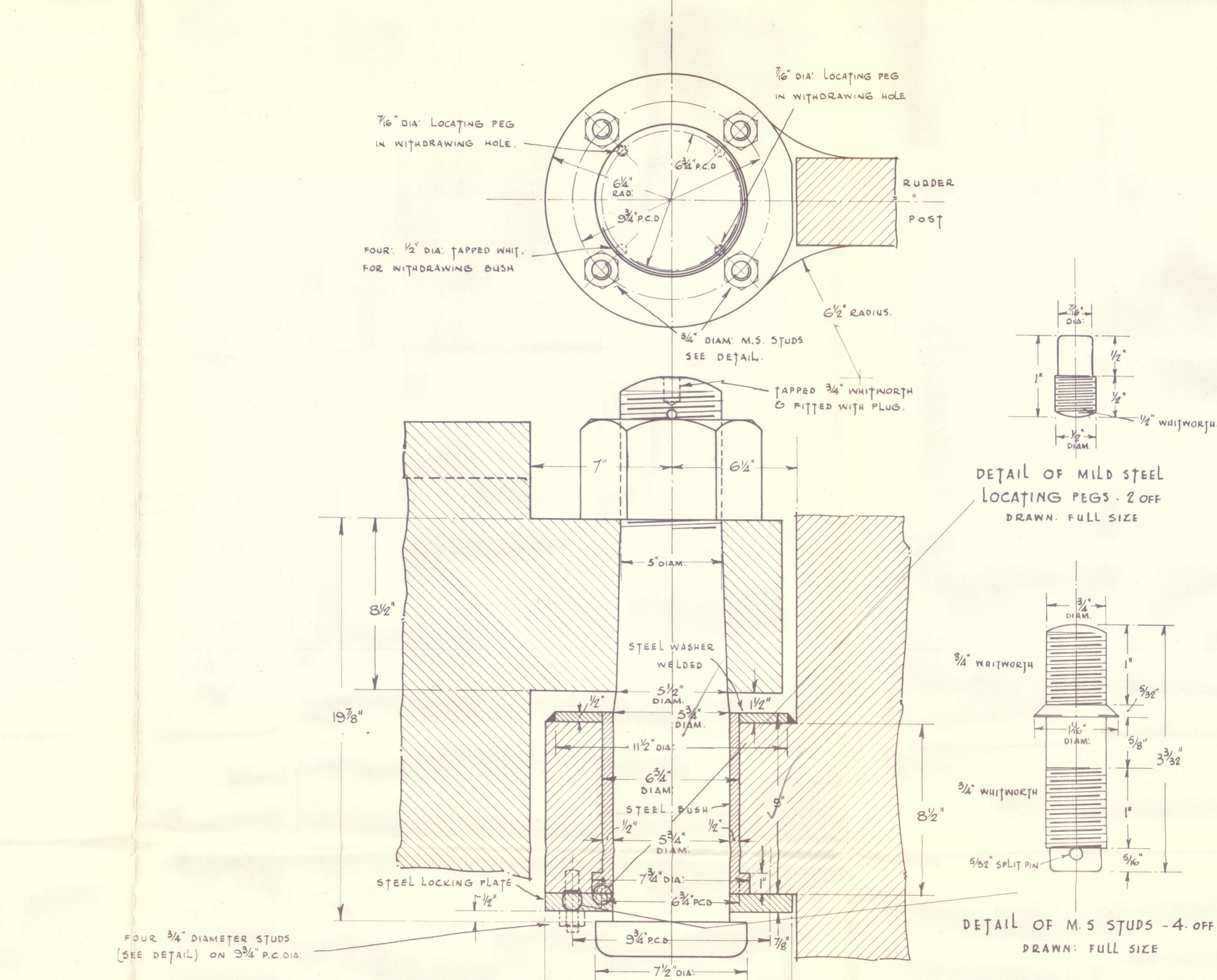
RUDDER POST  
SHOWING TAPER



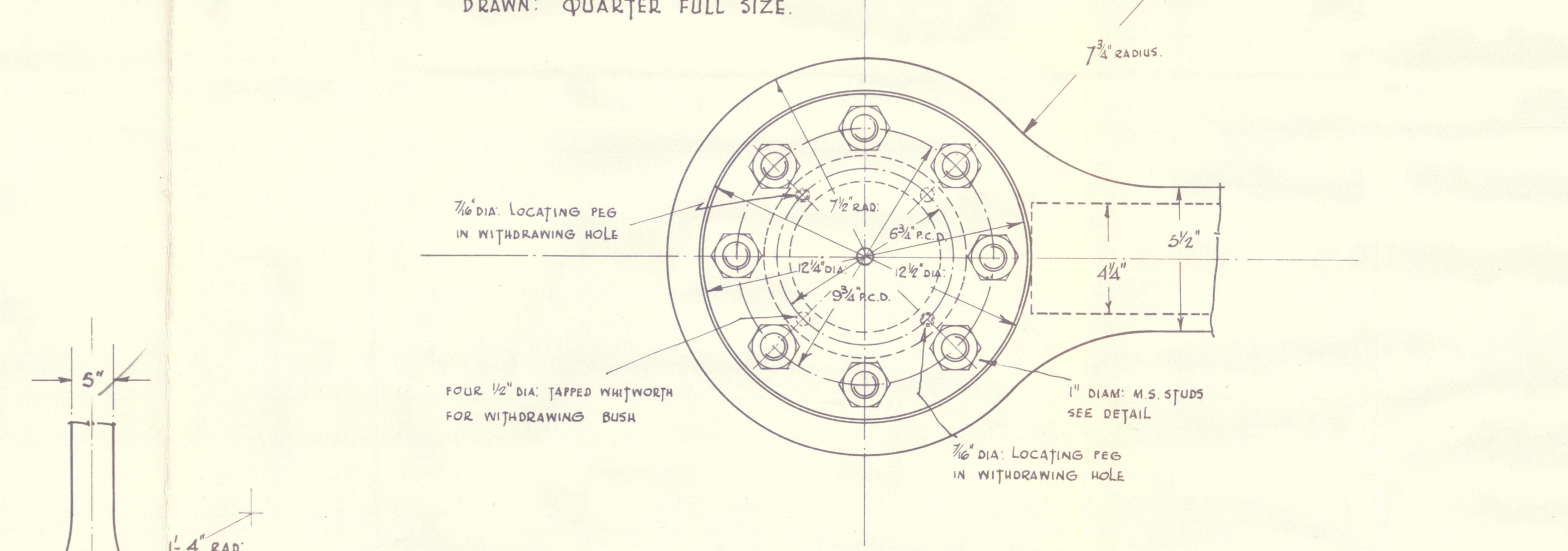
SECTION SHOWING WELL  
ROUNDED CORNERS OF  
RUDDER POST.



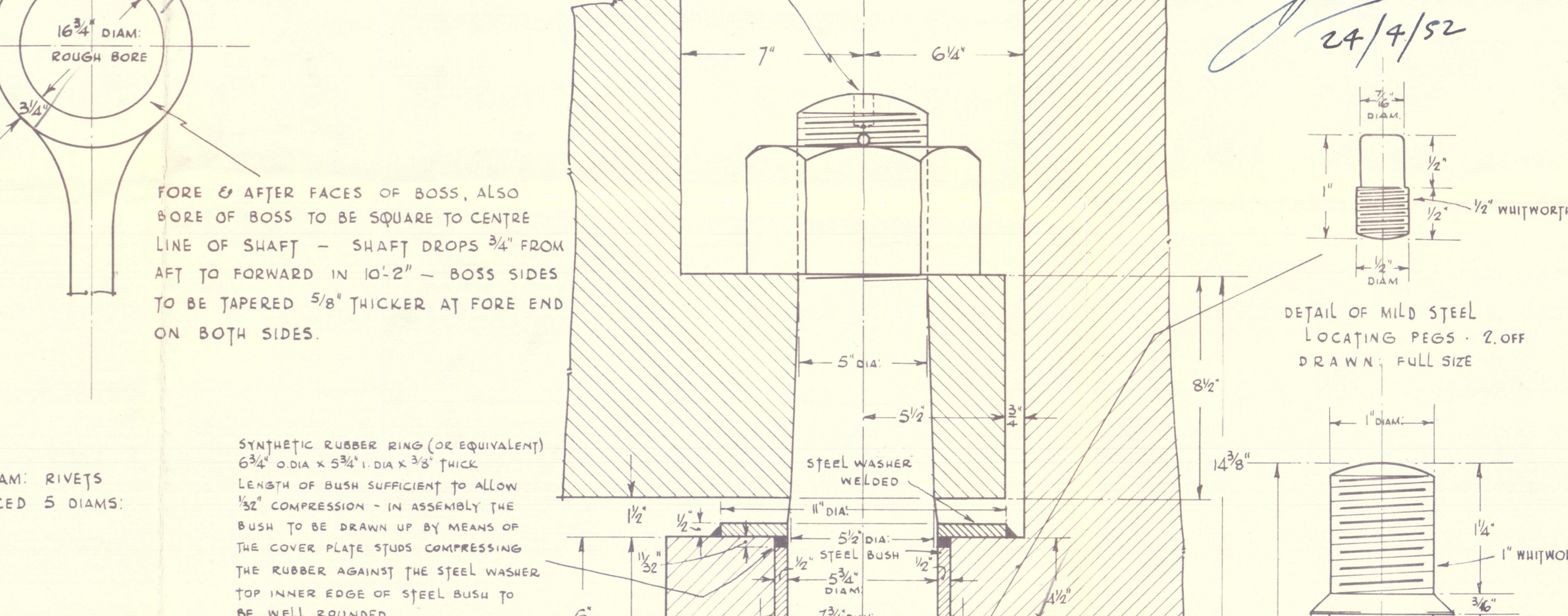
DETAIL SECTION OF RUDDER - S.B.  
SCALE: 1 1/2 INCHES = 1 FOOT



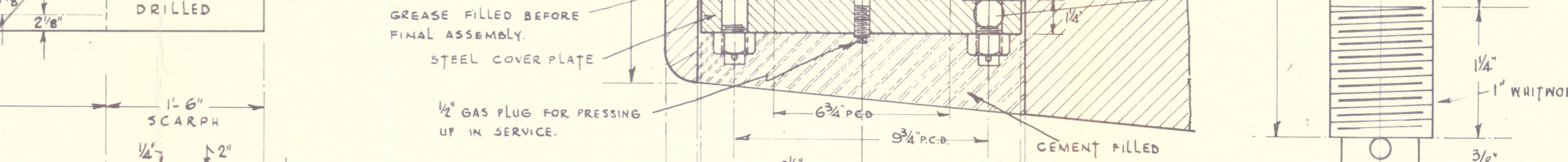
TOP PINTLE  
DRAWN: QUARTER FULL SIZE.



DETAIL OF MILD STEEL  
LOCATING PEGS - 2 OFF  
DRAWN: FULL SIZE



DETAIL OF M.S. STUDS - 4 OFF  
DRAWN: FULL SIZE



DETAIL OF M.S. STUDS - 8 OFF  
DRAWN: FULL SIZE

DETAIL OF MILD STEEL  
LOCATING PEGS - 2 OFF  
DRAWN: FULL SIZE

COCHRANE & SONS LTD.  
SELBY - YORKSHIRE.



24/4/52

2020  
Lloyds Register  
Foundation

FORE & AFTER FACES OF BOSS, ALSO  
 FORE OF BOSS TO BE SQUARE TO CENTRE  
 LINE OF SHAFT - SHAFT DROPS  $\frac{3}{4}$ " F  
 FT TO FORWARD IN 10'-2" - BOSS SH  
 O BE TAPERED  $\frac{5}{8}$ " THICKER AT FORE  
 ON BOTH SIDES.

SYNTHETIC RUBBER RING (OR EQUIVALENT)  
 $6\frac{3}{4}$ " O.DIA X  $5\frac{3}{4}$ " I.DIA X  $\frac{3}{8}$ " THICK  
 LENGTH OF BUSH SUFFICIENT TO ALLOW  
 $\frac{1}{32}$ " COMPRESSION - IN ASSEMBLY THE  
 BUSH TO BE DRAWN UP BY MEANS OF  
 THE COVER PLATE STUDS COMPRESSING  
 THE RUBBER AGAINST THE STEEL WASHER  
 TOP INNER EDGE OF STEEL BUSH TO  
 BE WELL ROUNDED

BASE LINE

TO BE  
 FILLED

BASE.

GREASE FILLED  
 FINAL ASSEMBLY.  
 STEEL COV

$\frac{1}{2}$ " GAS PLUG  
 UP IN SERV

1'-6"  
 CARPH

2"

$\frac{1}{4}$ " THICK



Lloyd's Register  
 Foundation

002194-002205-0145

✱ Nothen Crown.

Stemframe rudder

RECORDS DEPT.,  
LONDON.

34

COCHRANE & SONS LTD,  
YARD NOS. 1386-7-8

---

© 2020

STERNFRAME & RUDDER

Lloyd's Register  
Foundation

5

002194-002205-0145