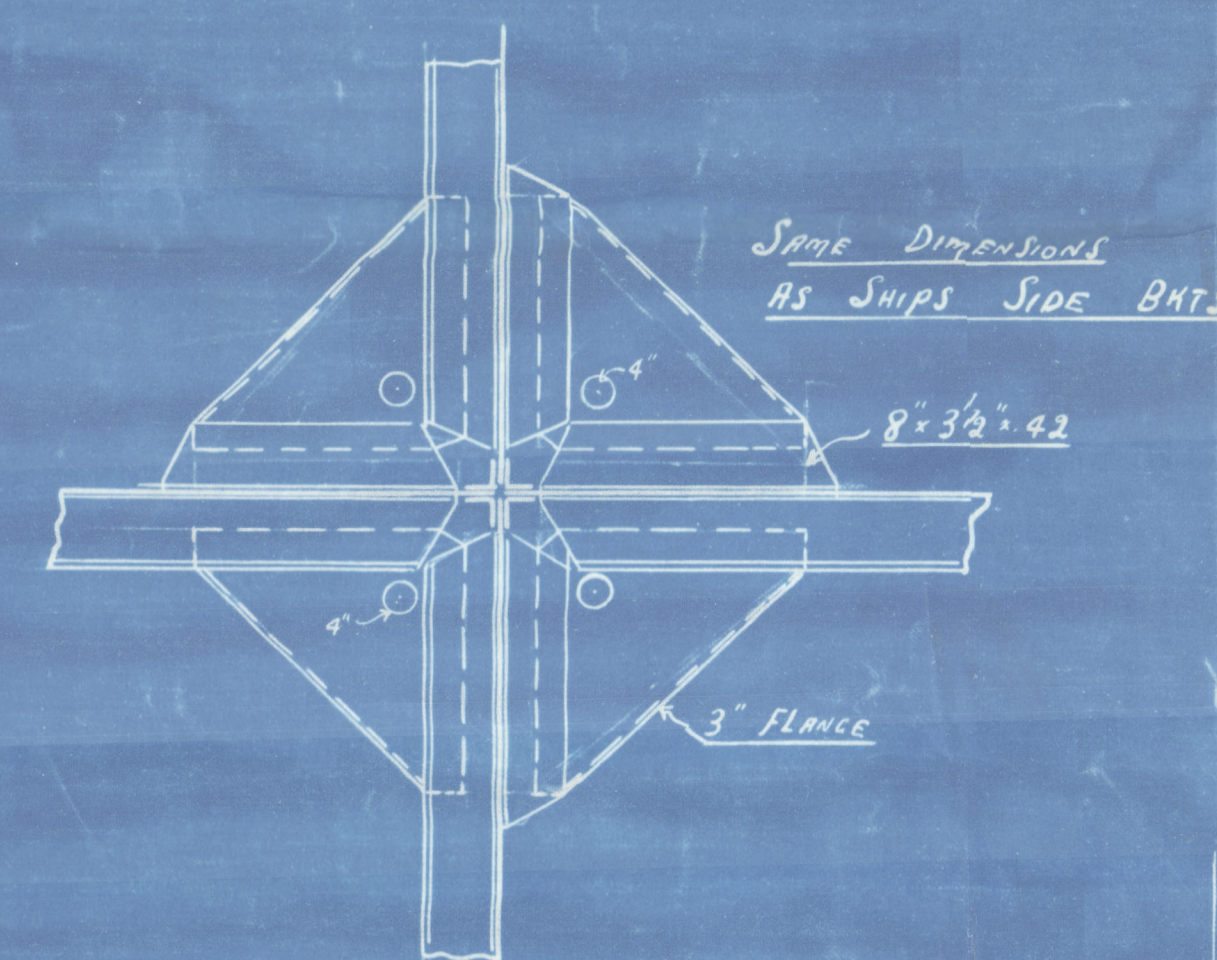
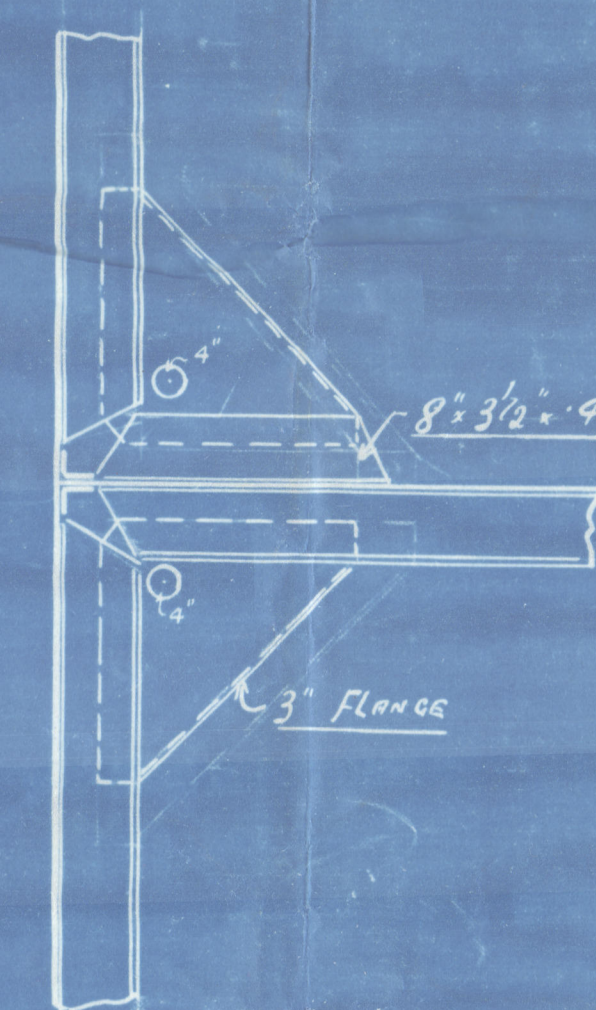


PLAN OF BRACKETS
AT CENTRE LINE



TRANSVERSE & LONGITUDINAL BULKHEAD WEBS & PLATING
INCREASED AT ENDS FOR SHEAR & EXTRA HORIZONTAL STIFFS
OR INCREASED SCANTLING INTRODUCED.

TRANSVERSES AT SHIP'S SIDE & CENTRE LINE BHD INCREASED
1 IN DEPTH FOR EACH 12" INCREASE IN SHEAR.

NOTCHES CUT IN TRANSVERSES & WEBS FOR LONGITUDINALS
TO BE WELL ROUNDED AT CORNERS & NOT ROUGHLY PUNCHED

NOTE - SCANTLING SHEWN FOR SIDE TWEEN DECK AND BULKHEAD TRANSVERSES; FOR LONGITUDINALS; CENTRE LINE & TRANSVERSE BULKHEAD WEBS, STIFFENERS & PLATING & TRUNK SIDE WEBS AND STIFFENERS ARE MIDSHIP SCANTLINGS.
INCREASE FOR DEER AS PER RULE.

Swan Hunter's 1234

Midship Section
of Ship as built

S. S. Gilshippes
NEWCASTLE ON TYNE.

Report No. 81622

002194-002205-0087



© 2020

Lloyd's Register
Foundation