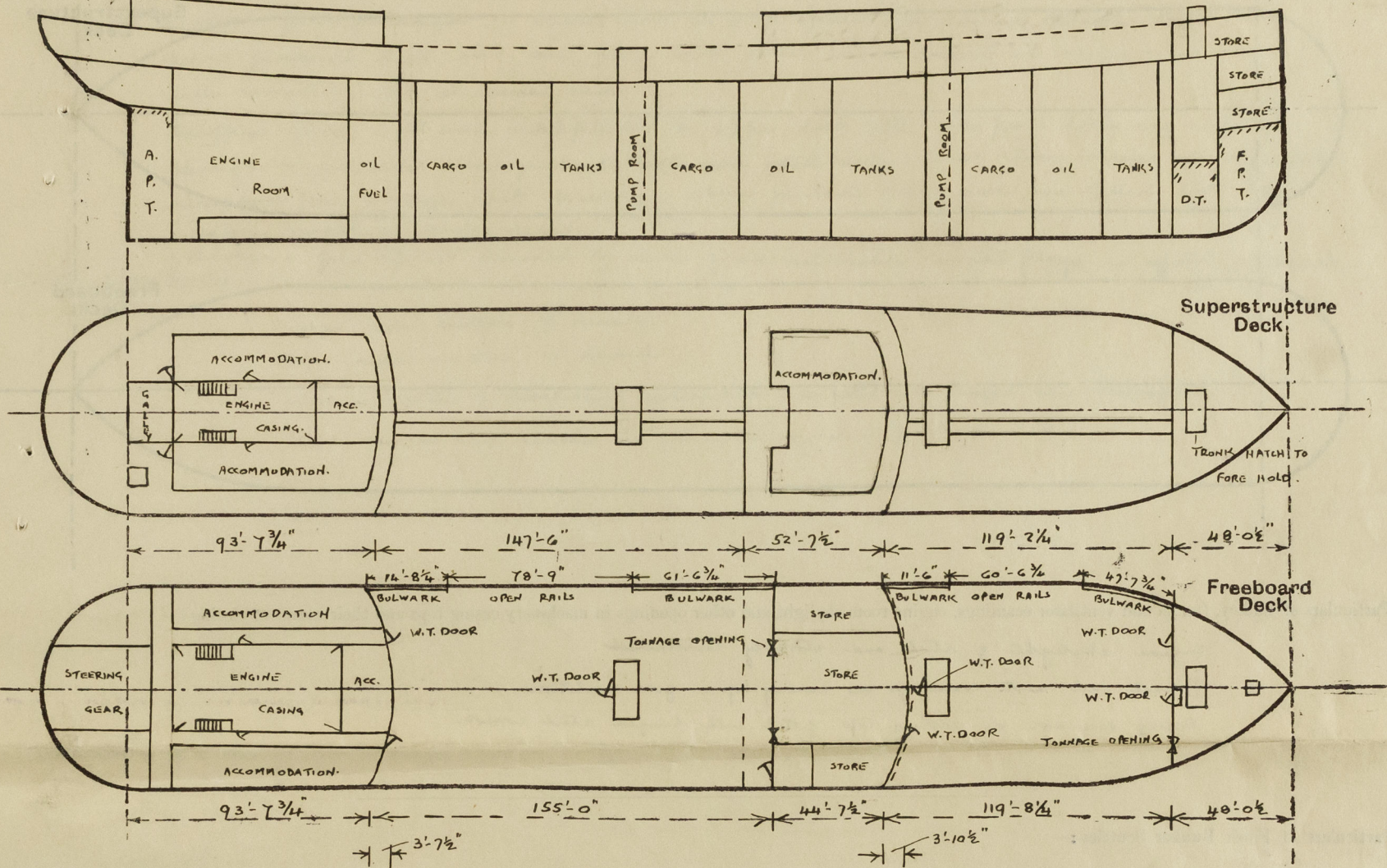


Lloyd's Register of Shipping.
SURVEYS FOR FREEBOARD.
(CONDITIONS OF ASSIGNMENT.)

Ship's Name "NERITOPSIS" Port of Survey GLASGOW
Official Number 180975 ✓ Surveyor's Signature H. Thomson
Nationality and Port of Registry BRITISH. LONDON. Date of Survey WHILE BUILDING.

Disposition and dimensions of superstructures, trunks, deckhouses and machinery casings to be inserted in the diagrams and tabular statement:—

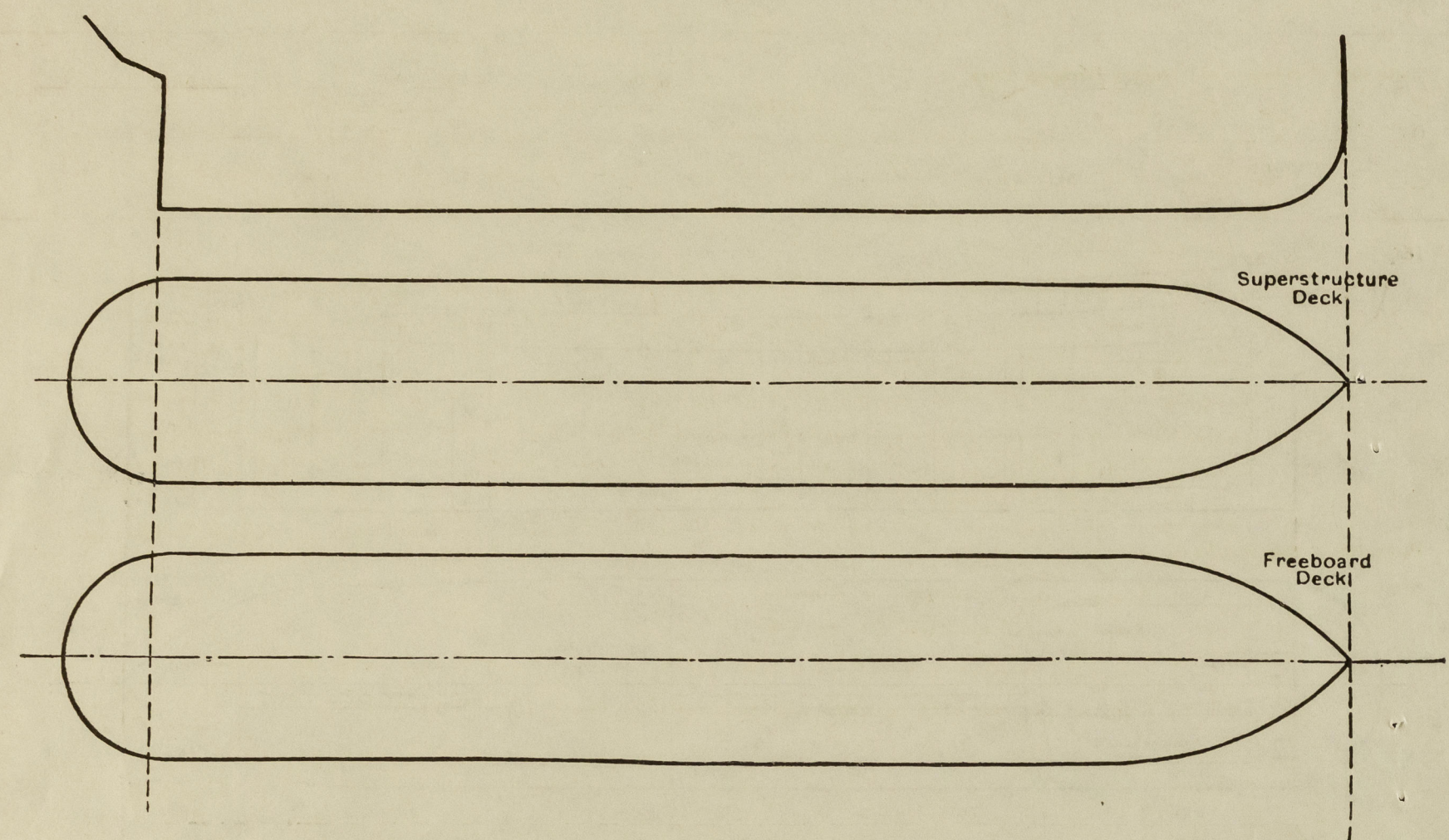


Particulars of Superstructures, Trunks, Casings, Deckhouses.									
	Coaming	Plating	Stiffeners	Spacing	End Attachments of Stiffeners	Size of Openings	Height of Sills	Height of Casings	
Poop Bulkhead	NONE	44	10 x 3 1/2 x 44 BA	33"	WELDED TOP & BOTTOM	4'-6" x 2'-6"	21"	✓	
Raised Quarter Deck Bulkhead ...									
Bridge, After Bulkhead	NONE	30	4 x 3 x 34 A	30"	WELDED TOP & BOTTOM	4'-6" x 2'-0" 4'-6" x 3'-6"	21"	✓	
Bridge, Forward Bulkhead	NONE	44	9 x 3 1/2 x 40 BA	30"	D=	4'-6" x 2'-9"	21"	✓	
Forecastle Bulkhead	NONE	32	4 x 3 x 34 A	30"	D=	5'-0" x 4'-1" 5'-0" x 2'-6"	18"	✓	
Trunk, Aft									
Trunk, Forward									
Exposed Machinery Casings on Freeboard or Raised Quarter Decks ...									
Exposed Machinery Casings on Superstructure Decks									
Machinery Casings within Superstructures not fitted with Class I Closing Appliances									
Deckhouses on Flush Deck Ships ...									

Particulars of Closing Appliances (state if capable of being manipulated from both sides).

Poop Bulkhead	2 HINGED STEEL W.T. DOORS MANIPULATED FROM BOTH SIDES
Raised Quarter Deck Bulkhead ...	
Bridge, After Bulkhead	1 HINGED STEEL W.T. DOOR MANIPULATED FROM BOTH SIDES 2 OPENINGS CLOSED WITH BOLTED PLATES - BOLTS NOT PASSING THROUGH BULKHEAD
Bridge, Forward Bulkhead	1 HINGED STEEL W.T. DOOR MANIPULATED FROM BOTH SIDES 1 OPENING CLOSED WITH BOLTED PLATES - BOLTS NOT PASSING THROUGH BULKHEAD
Forecastle Bulkhead	2 HINGED STEEL W.T. DOORS MANIPULATED FROM BOTH SIDES.
Exposed Machinery Casings on Freeboard or Raised Quarter Decks ..	
Exposed Machinery Casings on Superstructure Decks	
Machinery Casings within Superstructures not fitted with Class I Closing Appliances	
Deckhouses on Flush Deck Ships ...	

The following diagrams should be used to indicate the positions of cargo and coaling hatchways, gangway, cargo and coaling ports, ventilators, companionways, etc., which would affect the seaworthiness of the ship:—



Engine skylight of steel and strongly constructed
Funnel and vent coverings on casing top in good condition
Fidley openings on casing top fitted with hinged steel covers.

none.

Pump Room Entrances.

Steel casings 7'-6" high. Springings in after end 4'-6" x 2'-9"
Hinged steel w.t. doors - 18" cells. Manipulated from both sides
Entrance to pump house at after end
Solid wood door 5'-0" x 2'-0" - 18" cell. Manipulated from both sides.

7 Newcastle Dock.

2 vent cranes	$36 \times 10 \times .32$	to forward hold
1 " "	$36 \times 10 \times .32$	to pump room
2 " "	$36 \times 8 \times .32$	to forecastle
1 " "	$36 \times 8 \times .32$	to fore peak
1 quoredeck	$36 \times 5"$ dia.	to forecastle.

all next evenings closed with review down
w.t. steel cases.

Sorenecks closed with work plugs.

Forward + after wells

Bridge deck
2 next crossings $30 \times 10 \times .32$ to bridge apron.
" " " $30 \times 6 \times .30$ " " " "

Pop duck

1 vent coaming	$30 \times 12 \times .34$	to steering gear
1 " "	$30 \times 6 \times .30$	" "
4 " "	$30 \times 6 \times .30$	to bulk heads

2 " " 30 x 10 x .32 to upper duct passages
13 governors 30 x 5 dia. to pump spaces

Fourcette disk. 1-4" dia. 18" high to june peak tank

2-4" " 18" " forward deep tanks
" " " " attached to bulkhead.

Forward well 2-4" " 7-0 " " " coffeehouse. ripped to shreds

after well 2-3" " 7-10 " " after " " " "

2 - 3" " 7'0" " " sitting tanks " "

2-4 " 7-0 " " or lumps. " " "

Pop deck 2-3" " 18" " " fresh water tanks

2-3" " 18" " " after peak tank

1-2" " 18" " " curved stems

1-3" " 18" " " middle trunk

and pipes to oil fuel burners,
cylinders & settling tanks fitted
with gauge and hinged steel
plate cleaning plates.
all other air pipes closed
with wood plugs.

me.

Neurophos.

Sanitary discharges from W.C. and washbasins on poop deck and upper deck aft are carried below foreward deck and fitted with brass storm valves at ship's sides. ✓

Sanitary discharges from W.C.'s and washplaces on bridge deck and knees above are carried through ship's sides above upper deck and are fitted with brass storm valves at ship's sides.

Scuppernons from passages on upper deck in poop spaces are carried through ship's sides below gunboard deck and are fitted with brass storm valves at ship's sides and with reversed caps at inner end.

Scaupens from W.C. and washbasins on upper deck aft and poop deck are carried through ship's sides below mainboard deck and jettied with loose storm valves at ship's sides.

Supplies from bridge deck discharge above gunboard deck and are fitted with brass storm valves at ship's sides.

Bridge + fide spaces drained by means of non-detachable removed plugs in after turkheads.

Bridge side scuttles 3" diameter

Popo side scuttles 10" diameter

all side windows of substantial construction and fitted with hinged steel deadlights.

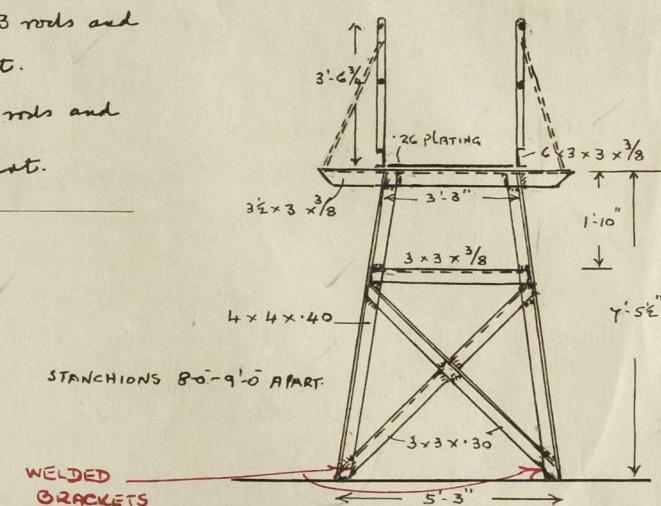
There are no side scuttles in forecabin or below foreward deck.

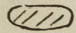
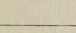
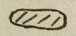
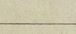
Vertical distance of Sill of lowest Side Scuttle above top of keel

Corp, bridge and Forecastle decks. Open rails 3'-6" high with 3 rods and stanchions about 4'-6" apart.

Forward & after wells. open rails 3'-6" high with 3 rods and
staples about 4'-6" apart.

Longway as per sketch extending from prop to
bridge deck and bridge to forecater decks.



Particulars of Freeing Arrangements.						
	Length of Bulwark	Height of Bulwark	Size of Freeing Ports	Number each side	Area each side	Rule area each side
After Well { TOTAL LENGTH 155'-0"	POOP FRONT 14'-8 1/2"	3'-6"	3'-0" x 1'-6" 	1	4-0 ✓	OPEN RAILS
	BRIDGE END 61'-6 3/4"	3'-6"	3'-0" x 1'-6" 	2	8-0 ✓	7B'-9"
Forward Well { TOTAL LENGTH 119'-8 1/2"	BRIDGE FRONT 11'-6"	3'-6"	3'-0" x 1'-6" 	1	4-0 ✓	OPEN RAILS
	PELE END 47'-7 1/4"	3'-6"	3'-0" x 1'-6" 	1	4-0 ✓	60'-0 3/4"
<p>State position of each freeing port ... { After Well:— FROM BRIDGE END TO FORE END 14'-11" Pts FROM POOP FRONT TO AFTER END 33'-0" + 14'-11" Pts (F. and A. position and height above deck edge) Forward Well:— FROM BRIDGE FRONT TO AFTER END 14'-11" Pts FROM PELE END TO FORE END 27'-0" Pts } ALL 15" ABOVE DECK</p> <p>State whether the freeing ports are fitted with shutters, bars, or rails, and give particulars of such:— 3 VERTICAL RUDD 9" APART.</p> <p>Additional area where sheer is less than standard.</p>						

PARTICULARS OF PROTECTION TO OPENINGS, ETC.

HATCHWAYS ON FREEBOARD AND SUPERSTRUCTURE DECKS.											
			← FREEBOARD DECK			→ POOP DECK → FILE DECK →					
Description of Hatchway			O.T. HATCHES	MANHOLES TO COFFERDAMS	HATCH TO F.P. STORE	HATCH TO FORE HOLD	HATCH TO STORE	HATCH TO FORE HOLD			
Dimensions of Hatchway			4'-0" DIA.	25" x 18"	2'-6" x 2'-0"	10'-0" x 8'-0"	2'-3" x 2'-3"	10'-0" x 8'-0"			
COAMINGS	{	Height above Deck	10" x 3/4"	4" ANGLE	6" ANGLE	HATCH TRUNKED	6" ANGLE	30			
		Thickness ... Sides ...	WELDED	COAMING		BETWEEN		44			
		Stiffeners ... Ends ...	TO	WELDED		UPPER & FILE DECKS		44			
		Brackets, Stays ...	DECK	TOE ON				6" ANGLE WELDED TOE ON. NONE			
HATCH BEAMS	{	Number									
		Spacing									
		Scantling and Sketch ...	←			NONE	→				
		Bearing Surface									
FORE AND AFTERS	{	Number									
		Spacing									
		Unsupported Lengths ...									
		Scantling* and Sketch ...	←			NONE	→				
		Bearing Surface									
HATCH COVERS	{	Material	STEEL W.T.	STEEL W.T.	STEEL W.T.		STEEL W.T.	STEEL WT			
		Thickness	HINGED COVER	COVER	HINGED COVER	✓	HINGED COVER	HINGED COVER			
		How fitted (any) ...	SECURED	SECURED	SECURED		SECURED	SECURED			
		Bearing Surface ...	BY TACKLES	BY BOLTS.	BY TACKLES		BY TACKLES	BY TACKLES			
Spacing of Cleats											
Number of Tarpaulins			←			NONE	→				
<div>*Are wood fore and afters steel shod at all bearing surfaces ?</div> <div>Are battens and wedges efficient and in good condition ?</div> <div>Are tarpaulins in good condition and in accordance with rule requirements ?</div> <div>Are lashings provided in accordance with rule requirements ?</div> <div>} NONE</div>											

Particulars of any special features :—

Endorsement at first survey and at surveys for renewal of Certificate :—

The fittings and appliances are in accordance with the particulars shown on this form (or as now modified) and are in good condition.



© 2020

Lloyd's Register Foundation