

Lloyd's Register of Shipping.

Port of Survey Amsterdam

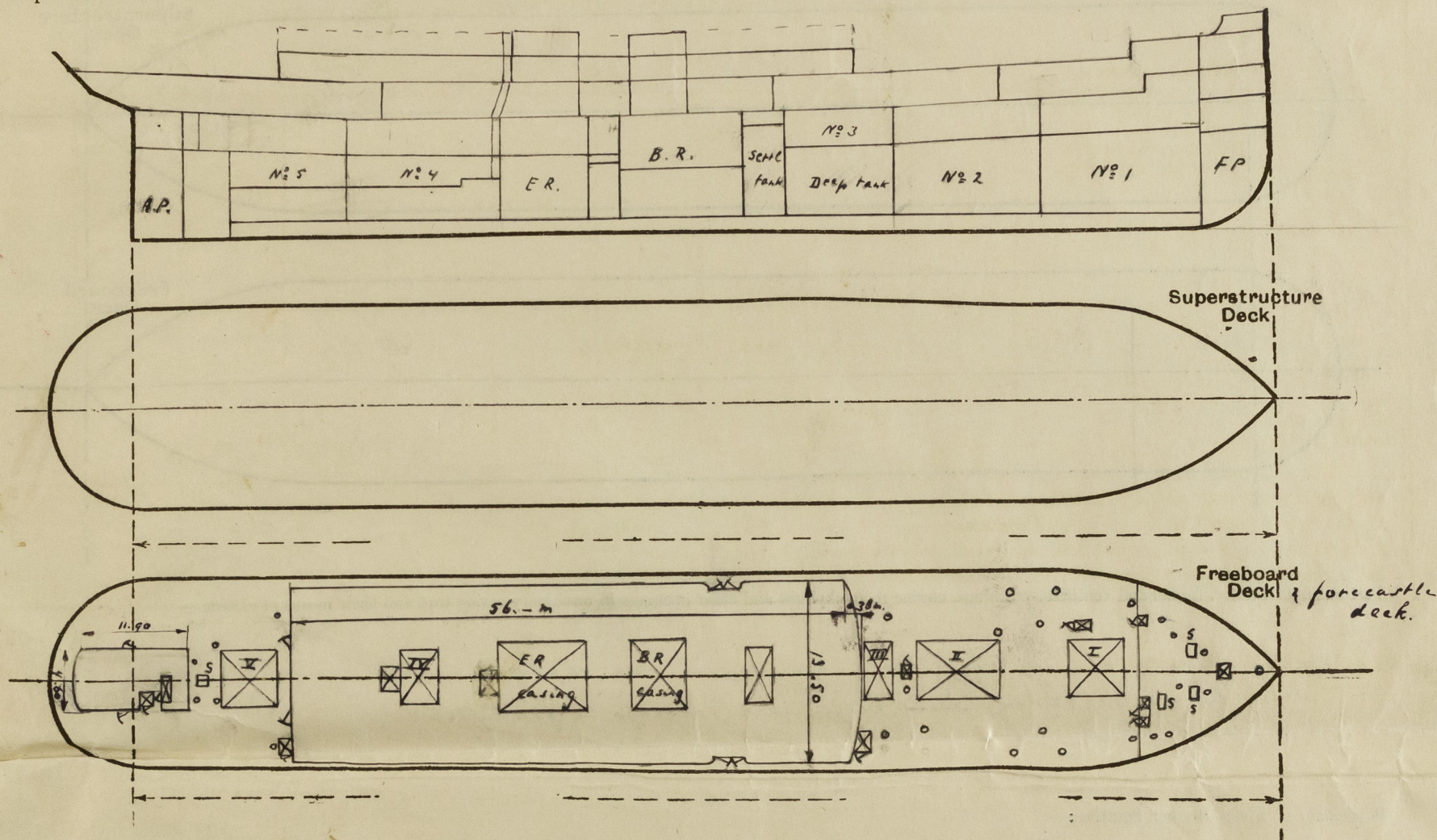
Official Number

Surveyor's Signature

Nationality and Port of Registry. ~~Paranahias~~ Parana

Date of Survey 30-7-'48

Disposition and dimensions of superstructures, trunks, deckhouses and machinery casings to be inserted in the diagrams and tabular statement : —



Particulars of Superstructures, Trunks, Casings, Deckhouses.

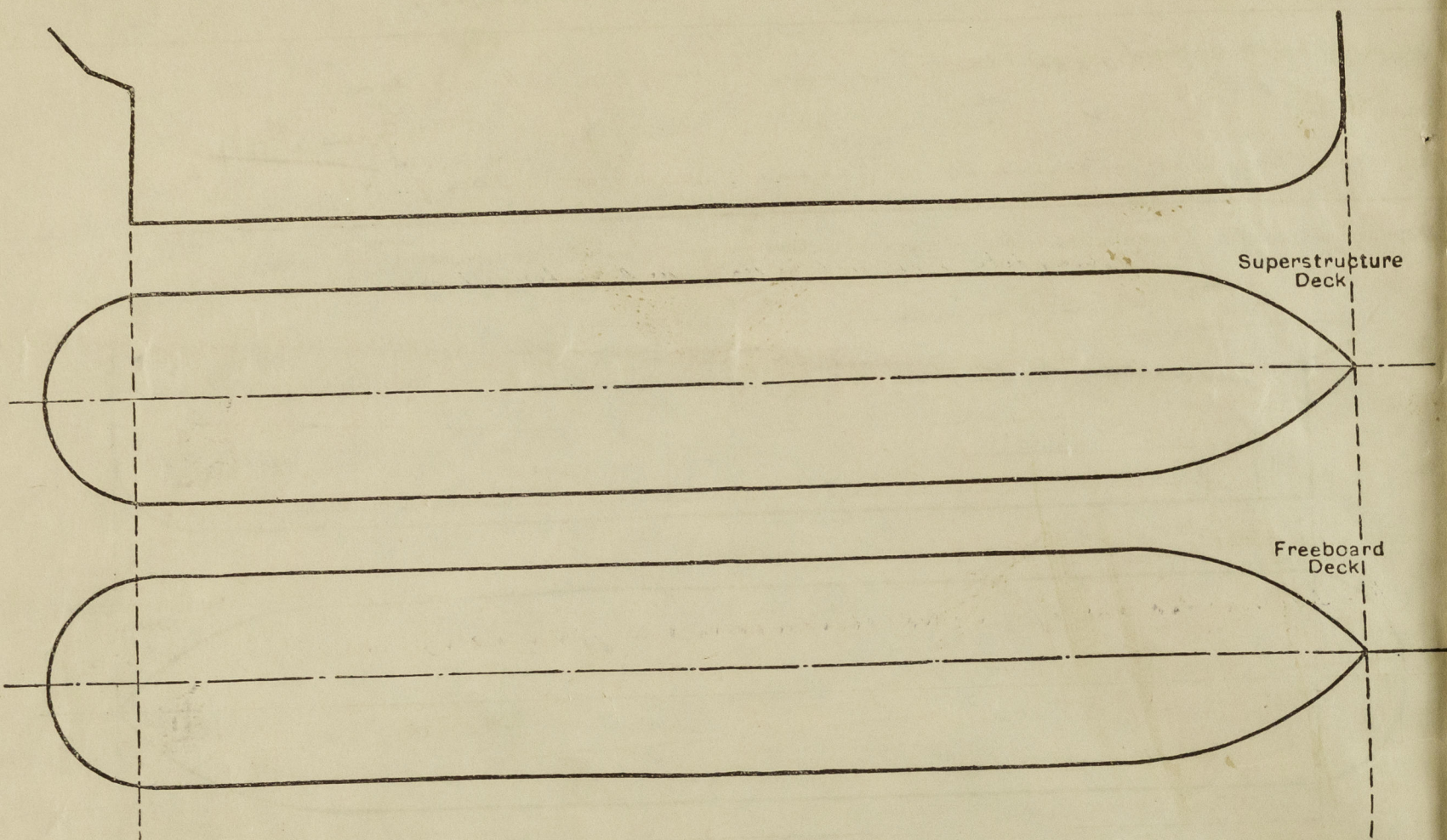
| | Coaming | Plating | Stiffeners | Spacing | End Attachments of Stiffeners | Size of Openings | Height of Sills | Height of Casings |
|--|----------|---------|--|---------|----------------------------------|---|--------------------|--------------------------|
| Poop Bulkhead deck house... .. | 300 x 8 | 7 mm | 75 x 65 x 10 | 710 | none | 1.68 x 0.61 | 300 ✓ | 2.31 m. |
| Raised Quarter Deck Bulkhead ... | ✓ | | | | | | | |
| deck house Bridge, After Bulkhead | 300 x 10 | 8 mm | 100 x 65 x 10 | 600 | none | 2 x 1.80 x 0.63 | 300 | 2.44 m. |
| deck house Bridge, Forward Bulkhead | 300 x 10 | 8 mm | 90 x 90 x 11 per ft. 75 x 75 x 10 | 950 | 100 x 100 mm ceiling in way | none | ✓ | 2.44 m. |
| Forecastle Bulkhead | ✓ | 8 mm | 90 x 75 x 8 | 600 | none | please see companion | 455 | 0.92 m. |
| Trunk, Aft | ✓ | | | | | | | |
| Trunk, Forward | ✓ | | | | | | | |
| Exposed Machinery Casings on Free- board or Raised Quarter Decks ... | ✓ | | | | | | | |
| Exposed Machinery Casings on Super- structure Decks | ✓ | | | | | | | |
| Machinery Casings within Superstruc- tures not fitted with Class I Closing Appliances | 550 x 10 | 7 | 90 x 75 x 10 ^{90L} 110 x 90 x 9 ^{101/10} at alt. frame | 700 | none | none on fore deck on Deck 1 x 1.70 x 0.74 → 200 on Deck 1 x 1.90 x 0.60 → 150 | | 6.50 above fore deck. |
| Deckhouses on Flush Deck Ships ... | ✓ | | | | | | | |

Particulars of Closing Appliances (state if capable of being manipulated from both sides).

| | |
|---|---|
| Poop Bulkhead deckhouse ... | 3 wood hinged ordinary doors operated both sides. Steering house 2 hinged st. doors Op. both sides |
| Raised Quarter Deck Bulkhead ... | ✓ |
| deckhouse Bridge, After Bulkhead ... | 2 ordinary hinged wood doors operated both sides. |
| Bridge, Forward Bulkhead ... | ✓ |
| *Forecastle Bulkhead ... | please see companion ways. |
| Exposed Machinery Casings on Free-board or Raised Quarter Decks ... | ✓ |
| Exposed Machinery Casings on Superstructure Decks ... | ✓ |
| Machinery Casings within Superstructures not fitted with Class I Closing Appliances ... | on D deck 1 ord hinged steel door in 2 parts op. both sides. on boat " 1 " " wood " " " " " " ✓ |
| Deckhouses on Flush Deck Ships ... | ✓ |

PARTICULARS OF PROTECTION TO OPENINGS, ETC.

The following diagrams should be used to indicate the positions of cargo and coaling hatchways, gangway, cargo and coaling ports, ventilators, companionways, etc., which would affect the seaworthiness of the ship:—



Particulars of fiddle, funnel and ventilator coamings, engine room skylight and other openings in machinery casing tops and their means of closing :—

Fidley, funnel and ventilator coverings, engine room skylight
strongly constructed, steel covers over gratings in fidley top
new funnel fitted.

Particulars of Flush Bunker Scuttles:—

Particulars of Companionways :—

| Particulars of Companionways:— | | Deck opening | | Door | | Sill | | Wt. | | Remarks | |
|--|-----------------------------------|--------------|------|-------------|------|------|--------|--------|-------|---------|------|
| A | Opening over after peak entrance | 1.55 x 1.55 | door | 1.60 x 0.66 | sill | 0.55 | with | hinged | steel | door | open |
| B | Trunnel escape | 1.85 x 0.60 | " | 1.55 x 0.50 | " | 0.40 | wood | hinged | door | open | |
| C | After bridge deck house S.S. | 1.45 x 0.76 | " | 1.50 x 0.62 | " | 0.55 | " | " | " | " | |
| D | Entrance to No 4 lower tween deck | 2.2 x 1.75 | " | 1.60 x 0.80 | " | 0.45 | with | steel | storm | door | open |
| E | " " upper | 2.2 x 1.05 | " | 1.60 x 0.80 | " | 0.45 | wood | hinged | door | open | |
| F | " " " | 4.50 x 2.05 | " | 1.85 x 1.18 | 0.55 | 2 | hinged | steel | door | open | |
| <p><i>Particulars see aft end bridge house.</i></p> <p>inside only, closing with b</p> | | | | | | | | | | | |

9. Before bridge deckhouse ss as C.

| Particulars of Ventilators in exposed positions on freeboard and superstructure decks. | | | | | | | | | |
|--|--------------------------|-------------|--------------|-------------|-------------|--------------|----------|------|---|
| H. Before | AB hatchway deck opening | 1.70 x 1.24 | door opening | 1.43 x 1.01 | sillabottom | hinged steel | wt. door | op | |
| J. A Breast No 9 | " ps | 1.61 x 0.90 | " | 1.30 x 0.70 | " | 0.61 | " | " | " |
| K PS fore castle deck opening | " | 1.08 x 0.91 | " | 1.30 x 0.60 | " | 0.51 | " | wood | " |
| L SS | " as K. | 1.60 x 1.05 | " | 1.30 x 0.70 | " | 0.51 | " | " | " |
| M. SS centre fore castle | " | | | | | | | | |

Forecastle vents: 3 off \varnothing 0.31 height 0.65 thickness 9 mm.

| | | | | | | | | |
|---|---|---|---|------|---|------|---|----|
| 3 | 4 | " | 2 | 0.26 | " | 0.65 | " | 9 |
| | | | 2 | 0.50 | " | 0.65 | " | 10 |

| | | | | | | | |
|-----|---|---|------|---|------|---|----|
| 3/2 | " | 2 | 0.50 | " | 0.65 | " | 10 |
| 11 | " | 2 | 0.88 | " | 0.92 | " | 12 |

Fore well:

5) 2 derricks used as vents

Afterwell: 3/6 off 2^{0.50} height 0.92 " 10 "

Particulars of Air Pipes in exposed positions on freeboard, raised quarter, or superstructure decks:—

All air pipes 0.92 m above deck, fitted with wooden plugs with chain attachments.

Particulars of Gangway Cargo and Coaling Ports:—

Gangway port pass on D deck frame 72-73, door opening 1.70 x 0.85, hinged steel door closed by bars and hook bolts.
Please see for Gangway port on C deck under companion ways (F.)

Particulars of Scuppers and Sanitary Discharge Pipes :—

particulars not yet complete, plan will be sent (see Adam letter F, dated 26-7-40')

Particulars of Side Scuttles :—

All side ~~scuttles~~ are of a solid construction and fitted with permanently attached dead lights.
Plans will be sent (see letter A'dam F 26-7-48.)

Vertical distance of Sill of lowest Side Scuttle above top of keel..... 10.22 m.

Particulars of Guard Rails :—

On fore-castle height above deck 1.10m. forged stanchions $2\frac{1}{4}"$ spaced 1.05m. top rail 2" pipe 3 rods between "clear space"
In Fore well, along bridge deck house and in after well, also on Boat deck height 1.10m, stanchions
forged $2\frac{1}{4}"$ spacing 1.15m. top rail 2" pipe 3 rods between "clear space"
Parts of 5m in way of hatchways are portable stanchions with $\frac{1}{2}"$ short link chain with stretching
screw, 3 chains $2\frac{1}{16}"$ between.
On bridge height 1.10 m. wood top rail 180x40 mm.
Particulars of Gangways, Lifelines, etc. :-

particulars of Gangways, Lifelines, etc.:—
have fitted

have fitted between 1" clear spacing $6\frac{1}{2}"$

Particulars of Freeing Arrangements.

| Details of Freeing Arrangements. | | | | | | |
|---|-------------------|-------------------|-----------------------|------------------|----------------|---------------------|
| | Length of Bulwark | Height of Bulwark | Size of Freeing Ports | Number each side | Area each side | Rule area each side |
| Well | | | | | | |
| d Well | | | | | | |
| <i>No bulwarks fitted.</i> | | | | | | |
| position of each freeing port (After Well | | | | | | |

position of each freeing port (After Well :—

d A. position and height above deck edge) { Aft Well :—
Forward Well :—

whether the freeing ports are fitted with shutters, bars, or rails, and give particulars of such:—

onal area where sheer is less than standard.

PARTICULARS OF PROTECTION TO OPENINGS, ETC.

| HATCHWAYS ON FREEBOARD AND SUPERSTRUCTURE DECKS. | | | | | | | | | |
|--|-------------|-------------|-------------|-------------|-------------|---------------|--|--|--|
| <div> <div>← upper deck</div> <div>→ boat deck</div> <div>upper deck</div> <div>fore castle</div> </div> | | | | | | | | | |
| Description of Hatchway | I | II | III | IV | V | F.P. hatchway | | | |
| Dimensions of Hatchway | 5.72 x 4.26 | 0.35 x 4.06 | 2.51 x 4.56 | 5.85 x 4.26 | 5.85 x 4.26 | 1.16 x 0.86 | | | |
| COAMINGS | | | | | | | | | |
| Height above Deck | 0.80 ✓ | 0.80 ✓ | 0.80 ✓ | 0.54 ✓ | 0.80 ✓ | 0.66 | | | |
| Thickness | 11 mm | 11 mm | 11 mm | 9 mm | 11 mm | | | | |
| Stiffeners | ✓ | ✓ | ✓ | ✓ | ✓ | ✓ | | | |
| Brackets, Stays | ✓ | ✓ | ✓ | ✓ | ✓ | ✓ | | | |
| HATCH BEAMS | | | | | | | | | |
| Number | three | five | one | three | three | ✓ | | | |
| Spacing | 1.43 | 1.59 | 1.26 | 1.46 | 1.46 | | | | |
| Scantling and Sketch | | | | | | | | | |
| 75 x 75 x 9 | | | | | | | | | |
| Bearing Surface | 75 mm | 75 mm | 75 mm | 75 mm | 75 mm | | | | |
| FORE AND AFTERS | | | | | | | | | |
| Number | ✓ | ✓ | ✓ | ✓ | ✓ | ✓ | | | |
| Spacing | | | | | | | | | |
| Unsupported Lengths | | | | | | | | | |
| Scantling* and Sketch | | | | | | | | | |
| Bearing Surface | | | | | | | | | |
| HATCH COVERS | | | | | | | | | |
| Material | wood | wood | wood | wood | wood | wood | | | |
| Thickness | 75 mm | 75 mm | 75 mm | 65 mm | 75 mm | 75 mm | | | |
| How fitted | 84 a | 84 a | 84 a | 84 a | 84 a | 14 unutil. | | | |
| Bearing Surface | 75 mm | 75 mm | 75 mm | 75 mm | 75 mm | 75 mm | | | |
| Spacing of Cleats | 60 mm | 60 mm | 60 mm | 60 mm | 60 mm | 60 mm | | | |
| Number of Tarpaulins | two | two | two | two | two | two | | | |
| <p>*Are wood fore and afters steel shod at all bearing surfaces? ✓</p> <p>Are battens and wedges efficient and in good condition? yes ✓</p> <p>Are tarpaulins in good condition and in accordance with rule requirements? yes ✓</p> <p>Are lashings provided in accordance with rule requirements? yes ✓</p> | | | | | | | | | |

Particulars of any special features:—

Skylights marked S on sketch fitted with closing appliances (cleats, tarp, battens wedges)

Endorsement at first survey and at surveys for renewal of Certificate:—

The fittings and appliances are in accordance with the particulars shown on this form (or as now modified) and are in good condition.



© 2020
Lloyd's Register
Foundation