

Do all the Frames extend to the top height in the Poop? *Yes* Raised Quarter Deck? *Yes* Bridge House? *Yes* Forecastle? *Yes*
 To what height do the Reverse Frames extend? *all Upper Deck, alternately to Forecastle, Bridge & Poop Deck, each where they extend to upper deck*
 Has the Poop ~~Raised Quarter~~ Deck an efficient Iron Bulkhead at the fore end? *Yes*
 Give particulars of the means for closing the openings in Bulkhead *Steel hinged doors*
 Is the Poop ~~Raised Quarter~~ Deck connected with the Bridge House? *No* Has the Bridge House an efficient Bulkhead at the fore end? *Yes*
 Give particulars of the means for closing the openings in Bulkhead *by Steel Hinged Doors*
 What is the thickness of the Bridge Front plating? *40* and Coaming plate? *40*
 Give scantlings and spacing of the Stiffeners *8" x 3 1/2" x 3 1/2" x 24' 1" lbs spaced 30"*
 Are bracket plates fitted at each end of the Stiffeners *Large Angle Lugs* Are hor'l. brackets fitted connecting Bridge Bulk'd. with Bulwarks? *Yes*
 Has the Bridge House an efficient Iron Bulkhead at the after end? *Yes*
 How are the openings closed? *Steel Doors bolted & Stormboards in riveted channels (full height of openings)*
 Is the Forecastle at least as high as the main or top-gallant rail? *Yes* Has the Forecastle an efficient Iron ~~or Wood~~ Bulk'd. at after end? *Yes*
 Are the Engine and Boiler openings covered by a Bridge, Poop, Raised Quarter Deck, or enclosed by a Strong Iron or Steel Deckhouse? *by Bridge House*
 If the openings are not so protected are the exposed parts of the Casings efficiently constructed? *Yes*
 Give thickness of plating; scantlings and spacing of Stiffeners *Yes*
 What is the height of the exposed Casings? *Yes* Are suitable means provided for closing all openings in them in bad weather? *Yes*

Are the Weather Deck Hatchways efficiently constructed and at least equal to the requirements of Section 2 of the Rules for 1904-5? Give particulars below: *Yes*

Position and Size.		No. 1 - 31'-6" x 21'-0"		No. 2 - 31'-6" x 21'-0"		No. 3 - 15'-9" x 14'-0"		No. 4 - 31'-6" x 21'-0"		No. 5 - 31'-6" x 21'-0"	
Item.		Ship.	Rule.	Ship.	Rule.	Ship.	Rule.	Ship.	Rule.	Ship.	Rule.
COAMING.	Height above top of DECK	36"	36"	36"	36"	30"	30"	36"	36"	36"	36"
	Thickness {	Sides.....	.50	.50	.50	.50	.50	.50	.50	.50	.50
		Ends.....	.50	.50	.50	.50	.50	.50	.50	.50	.50
SHIFTING BEAMS OR WEE PLATES.	Number	5	5	5	5	3	3	5	5	5	5
	Section and Scantlings	14 1/2" x .36 plate 4" x 3" x 9.5" DBL AS DO		14 1/2" x .36 plate 4" x 3" x 9.5" DBL AS DO		14 1/2" x .36 plate 4" x 3" x 9.5" DBL AS DO		14 1/2" x .36 plate 4" x 3" x 9.5" DBL AS DO		14 1/2" x .36 plate 4" x 3" x 9.5" DBL AS DO	
	Material	Steel		Steel		Steel		Steel		Steel	
* FORE AND AFTERS.	Number										
	Section and Scantlings	Nil		Nil		Nil		Nil		Nil	
	Material	Nil		Nil		Nil		Nil		Nil	
HATCHES Thickness		3	3	3	3	3	3	3	3	3	3
Remarks.....		good		good		good		good		good	

* The depth of Fore and Afters should be stated from the underside of the hatches in all cases.

(If the sill of the lowest side scuttle will be less than 6 inches above the Indian Summer Load Line if assigned under the tables, state vertical distance from top of deck at side amidships to lower edge of lowest side scuttle.)

The following information is to be given in all Cases of vessels dealt with under Paras. 11, 12 (under 15 feet Moulded depth) and under Shelter Deck Rules.

What is the thickness of the Bridge Sheerstrake? *Strake between Main and Bridge Sheerstrakes?*

Delete the words { The Crew are, are not, berthed in the bridge house.
 that do not apply { The arrangements to enable them to get backwards and forwards from their quarters are, are not satisfactory.

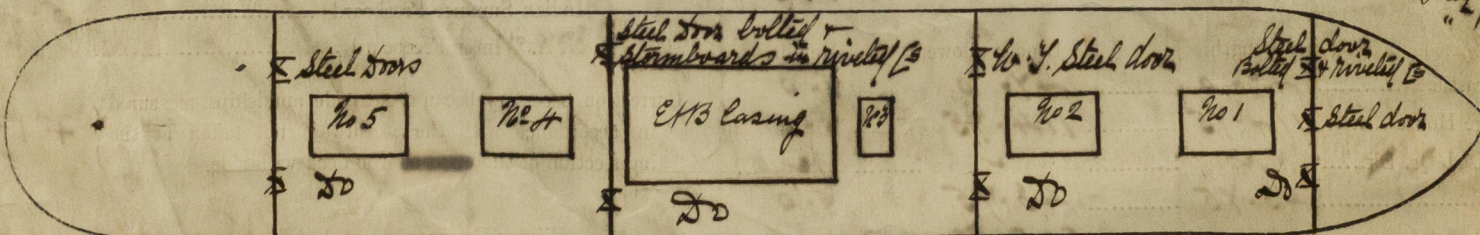
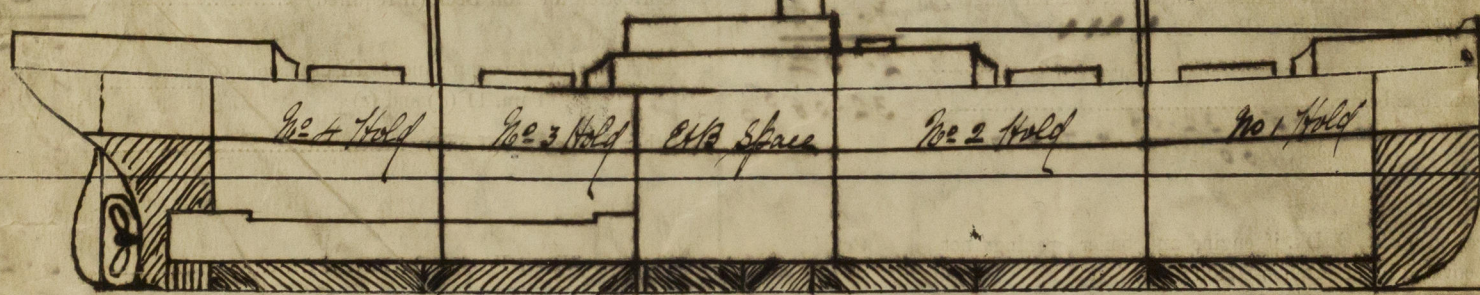
Length of Bulwarks in well

Area of Freeing Ports required by Para. 11 (e) each side of vessel = Sq. ft.

Ft. Tenths. Ft. Tenths. No.

Freeing Ports (each side of vessel) = Sq. ft.

Total deficiency or excess = Sq. ft.



Plating plate keel 1.02
 " Overlaid 1.02
 & strake .66
 2.70

Show hereon line of Floors or Tank Top with position of any Breaks in same; also height of Peak Tank tops, &c., &c.

State any special features in the construction of the Vessel *This vessel is constructed with poop, bridge & forecastle decks, transverse framing 10" inch depth of girders. A request form is herewith attached. See Vancouver Freeboard Report No. 743 of sister vessel "War Column"*

Owners *Imperial Munitions Board (Mang Owners) Messrs. Harburn & Gerd Ltd.*

Address *Glasgow & Liverpool*

Fee \$ 50.00

Received by me

Lloyd's Register Foundation