

15.2.22 — LLOYDS NUMERALS

PROFILE + DECK PLANS.

TRANSVERSE No = 57.00

LONGITUDINAL No = 13965.

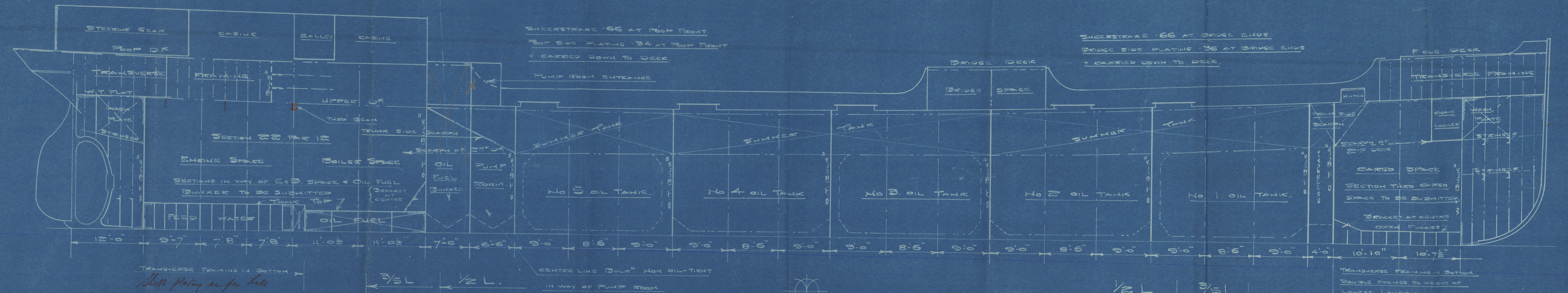
L (UPPER DECK) = 12.25

DIMENSIONS: — LENGTH B.P. 245'-0". BREADTH M.L.P. 37'-0". DEPTH M.L.P. 20'-0" (UPPER DECK)

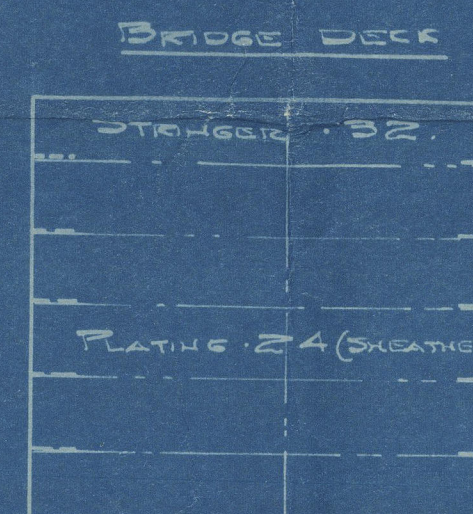
SHERWOOD SYSTEM (PATENT)

SCALE 1/8" = 1 FOOT.

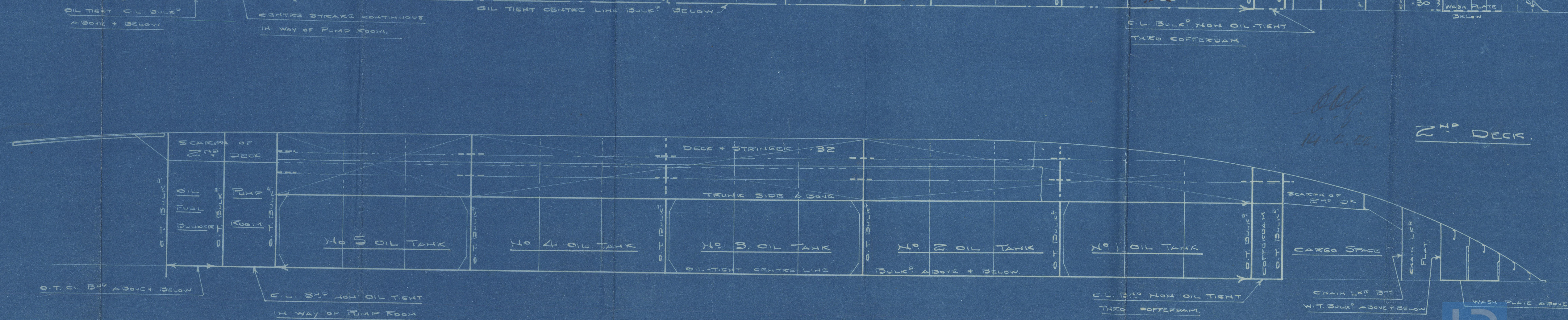
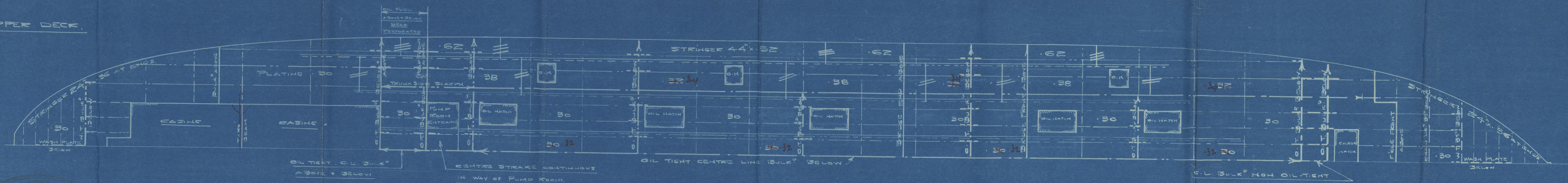
THE FLASH POINT OF THE OIL FUEL
TO BE ABOVE 150° F + SEC 49
OF THE RULES TO BE COMPLIED WITH.



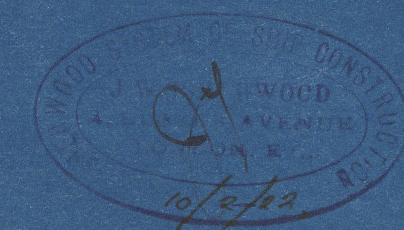
NOTE: — THE LOWER STIFFENERS OF TRANSVERSE + LONGITUDINAL BULKHEAD PLATING EXCLUDING FLOOR PLATE + LOWEST STIFFENERS OF LONGITUDINAL BULK TO BE INCREASED IN THICKNESS AS PER RULE WHERE BULKHEADS ARE OF INCREASED DEPTH DUE TO SHEER, WHERE ADDITIONAL STIFFENERS TO TRANSVERSE + LONGITUDINAL BULKHEADS ARE REQUIRED IN VIEW OF INCREASED DEPTH DUE TO SHEER THE STIFFENERS ARE TO BE GRADUATED FROM THE UPPER DECK, THE ADDITIONAL STIFFENERS TO BE INCREASED ABOVE SIZE OF LOWEST STIFFENER SHOWN ON MIDSHIP SECTION BULKHEAD PLAN BY 2" IN DEPTH OR 1/4" IN THICKNESS FOR EACH ADDITIONAL ONE.



UPPER DECK.



ENCLOSURE
No 137



Messrs Swan Hunter & Wigham Richardson Ltd.
Walker - m. type.
S.S. No. 1136 No 1433, Plan No 1042
Feb'y 9th 1922.



Lloyd's Register of Shipping

002114-002/27-0071

2 Profile & Decks

N^o 1136

Swan Hunter & Wigham Ricks
Newcastle on Tyne

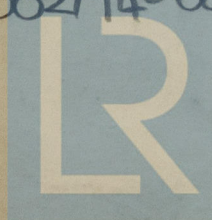
See Plan as built

"BRITISH SCOUT"

NEWCASTLE ON TYNE.
760 50.
145650-
Report No.

Enclosure to
Messrs Swan, Hunter & Wigham
Ricks Ltd,
Ship No. 245' x 34' x 20'0"
Plans Profile & Decks.

002194-002183-0071



© 2020

Lloyd's Register
Foundation