

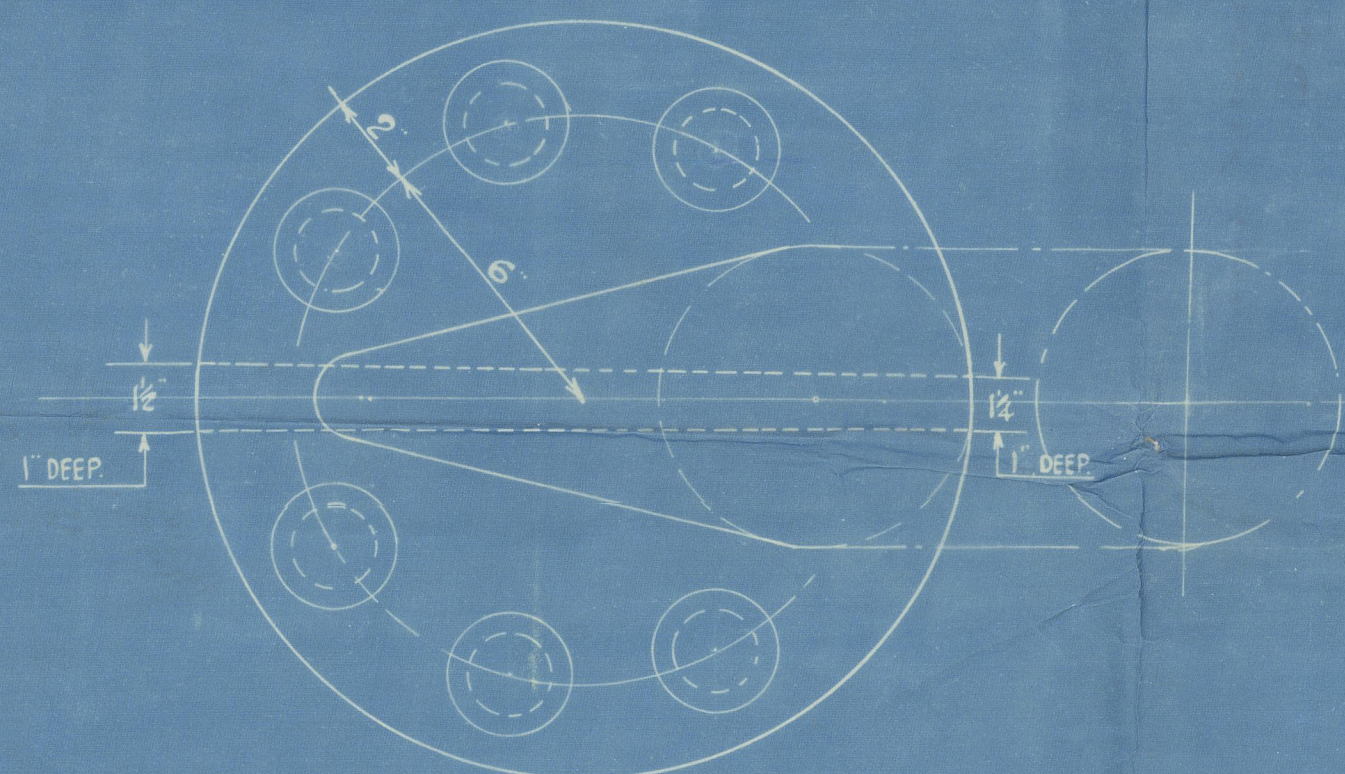
10.2.22

DETAIL OF COUPLING

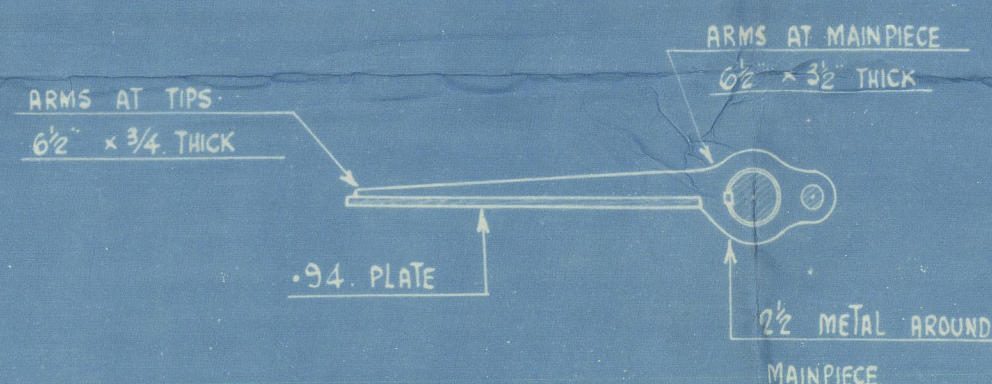
SCALE 3"=1"

6 BOLTS 1 3/4" DIAR

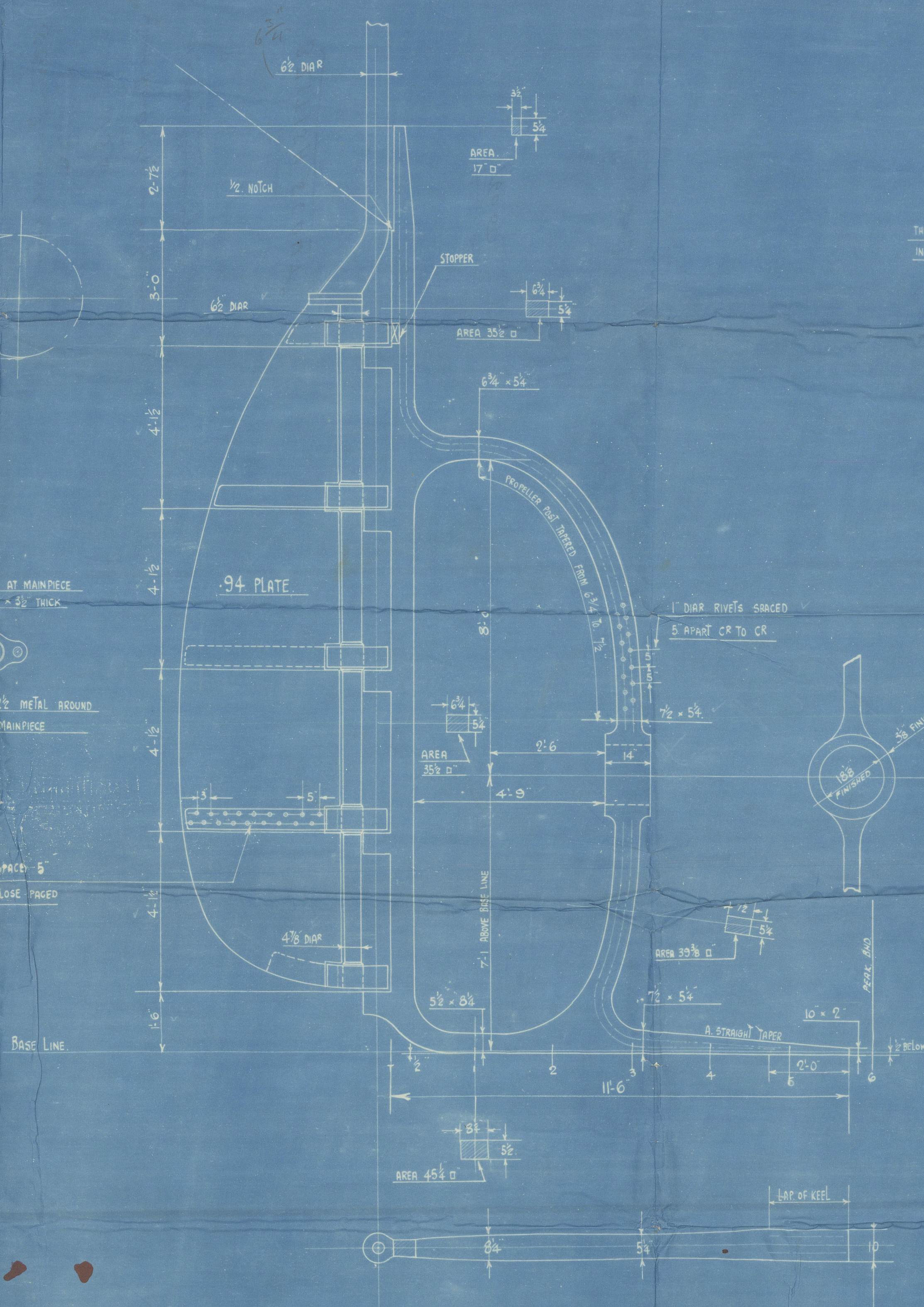
FLANGES 1 3/4" THICK.



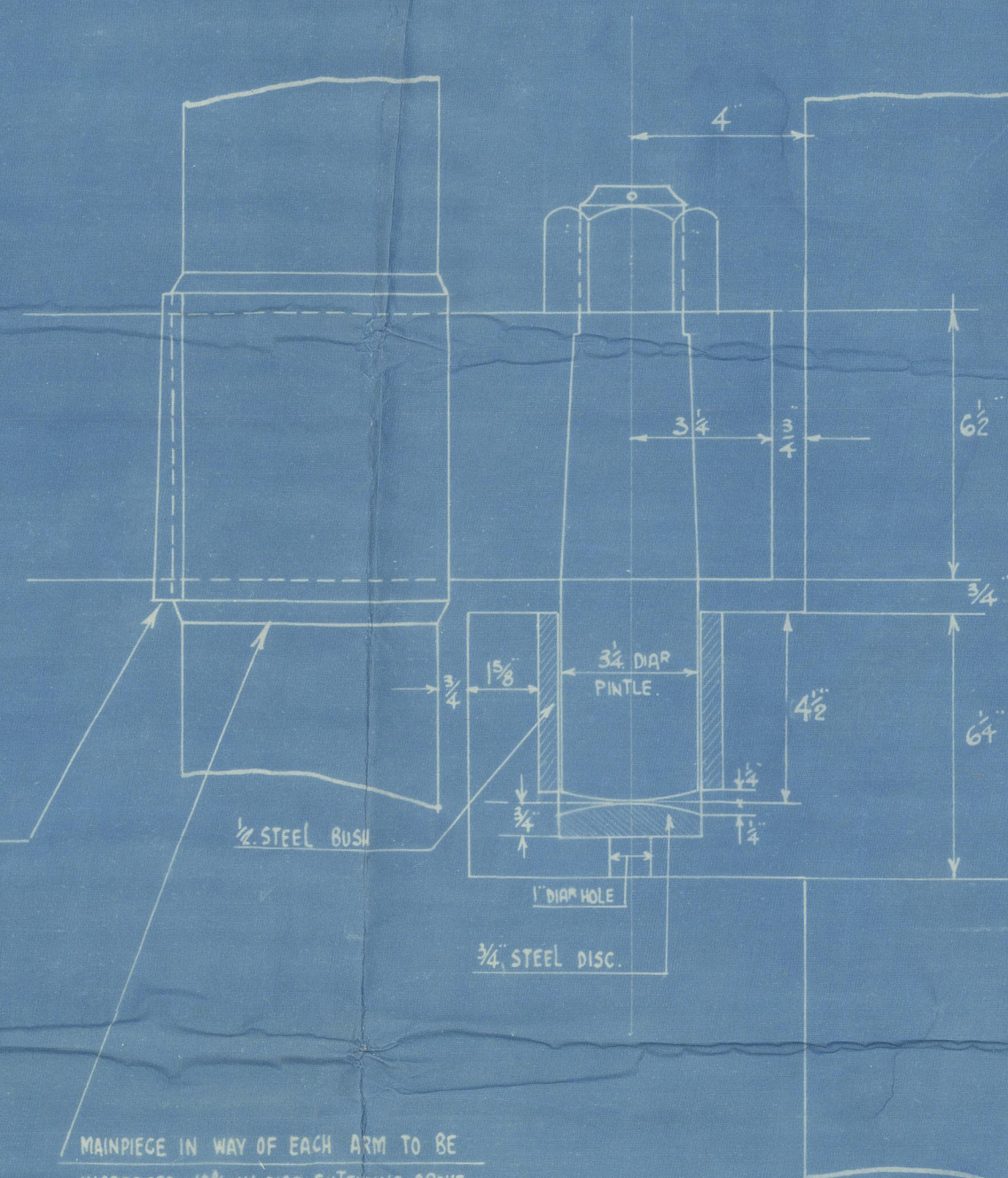
PLAN OF ARMS.



RIVETS IN ARMS 1/8" DIAR. SPACED 5" APART CR TO CR GRADUALLY CLOSE PAGED AT ENDS.



THICKNESS OF KEY 10% DIAR OF MAINPIECE INCREASED BY A 1/4" AT BOTTOM. BREADTH EQUAL TO TWICE THE THICKNESS



MAINPIECE IN WAY OF EACH ARM TO BE INCREASED 10% IN DIAR EXTENDING ABOVE AND BELOW FOR A DISTANCE EQUAL TO THAT INCREASE THENCE GRADUALLY TAPERED INTO MAINPIECE IN A SIMILAR DISTANCE.

AREA OF RUDDER = 65 sq. Ft.

A x D = 150.8

SPEED IN KNOTS = 10

RULE DIAR OF HEAD = 6"

+ 10% DIAR (OWNER'S REQUIREMENTS) = 6 1/2" - 6 3/4"

LONGITUDINAL NO = 13984

No 1136

10.2.22

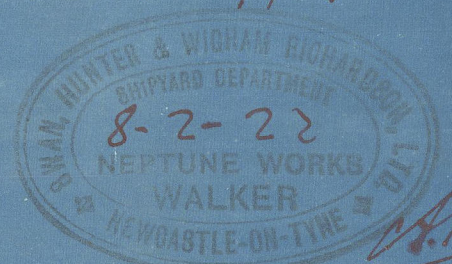
STERN AND RUDDER FRAMES

SCALE 1/2"=1 FT.

ENCLOSURE NO 128

SWAN, HUNTER & WIGHAM LTD. SHIPYARD DEPARTMENT, NEPTUNE WORKS, WALKER. DRAWN BY J. D. TURNBULL 8.2.22. CHECKED BY

No 27984



3) Stern ^{4p}Frame and
~~Rudder~~

N^o 1136

Swan Hunter Wigham Richardson

Newcastle on ^{4p}Tyne

See plan as built
of Rudder

"BRITISH SCOUT"

NEWCASTLE ON TYNE.

Report No. ~~145650~~
76050.



© 2020

Lloyd's Register
Foundation

002174-002183-0076