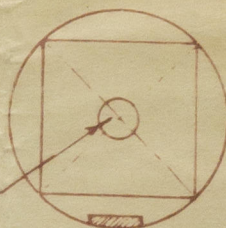


21515 21516

187/29

35

HOLE TAPPED
FOR 1 1/4"
EYEBOLT ✓



- DETAIL OF RUDDER HEAD -

SPEED NOT EXCEEDING 12 KNOTS. ✓

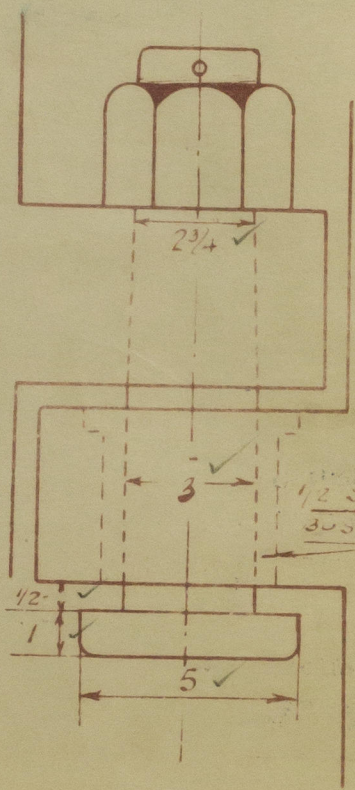
NO	DEBS	$\frac{1}{2}$ IN	FRACTIONS DE A	DEBS	$\frac{1}{2}$ IN	FRACTIONS DE B C
0	31	1	45	8	12	1
1/2	2 23	2	4 58	3 24	5	0 48
1	3 12	13	4 68	3 23	13	4 53
2	3 87	4	5 15	4 27	4	54 88
3	4 00	2	8 00	6 00	3	37 00
4	3 85	1	5 40	4 82	4	53 18
5	3 10	12	4 65	3 51	12	4 41
52	2 23	2	4 58	5 24	2	0 45
0	-	12	-	-	12	-

$$AREA = \frac{57.82 \times 2.27}{3} = 39.899$$

$$C.C. = \frac{201.53}{57.82 \times 2} = 1.74 \checkmark$$

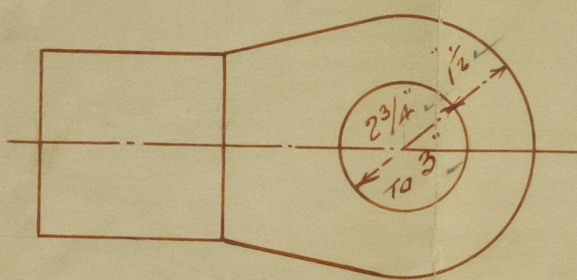
$$D = 174 + 34 = \underline{208} \checkmark$$

$$\Delta \times D = \underline{82.97} \checkmark$$



DETAIL OF PINTLE IN TOP GUDGEON
SCALE 3" = 1 FT ✓

PLAN NO. 2431.
FOR ENCLOSURE TO
Messrs. Lloyd's Register of Shipping
Hull. FROM
COCHRANE & SONS, LTD.,
SHIPBUILDERS SELBY.
DATE 13-7-29.

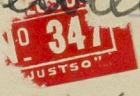


DETAIL OF RUDDER GUDGEON. ✓

NOTE :- THE UPPER & LOWER SURFACES OF
GUIDEONS TO BE SQUARE TO POST
& DEAD LEVEL SO THAT PIVOT NUTS
WILL BEAD TRUE ON SAME V

Cochrane & Sons. Ltd.
Selly

Key 25
Rindler
No. 1064

88.	"Cape Melville"
	
HULL REPORT No.	40461.



© 2020

Lloyd's Register
Foundation

002165-002173-0051