

HOSPITAL SHIP "MAUNGANUI."

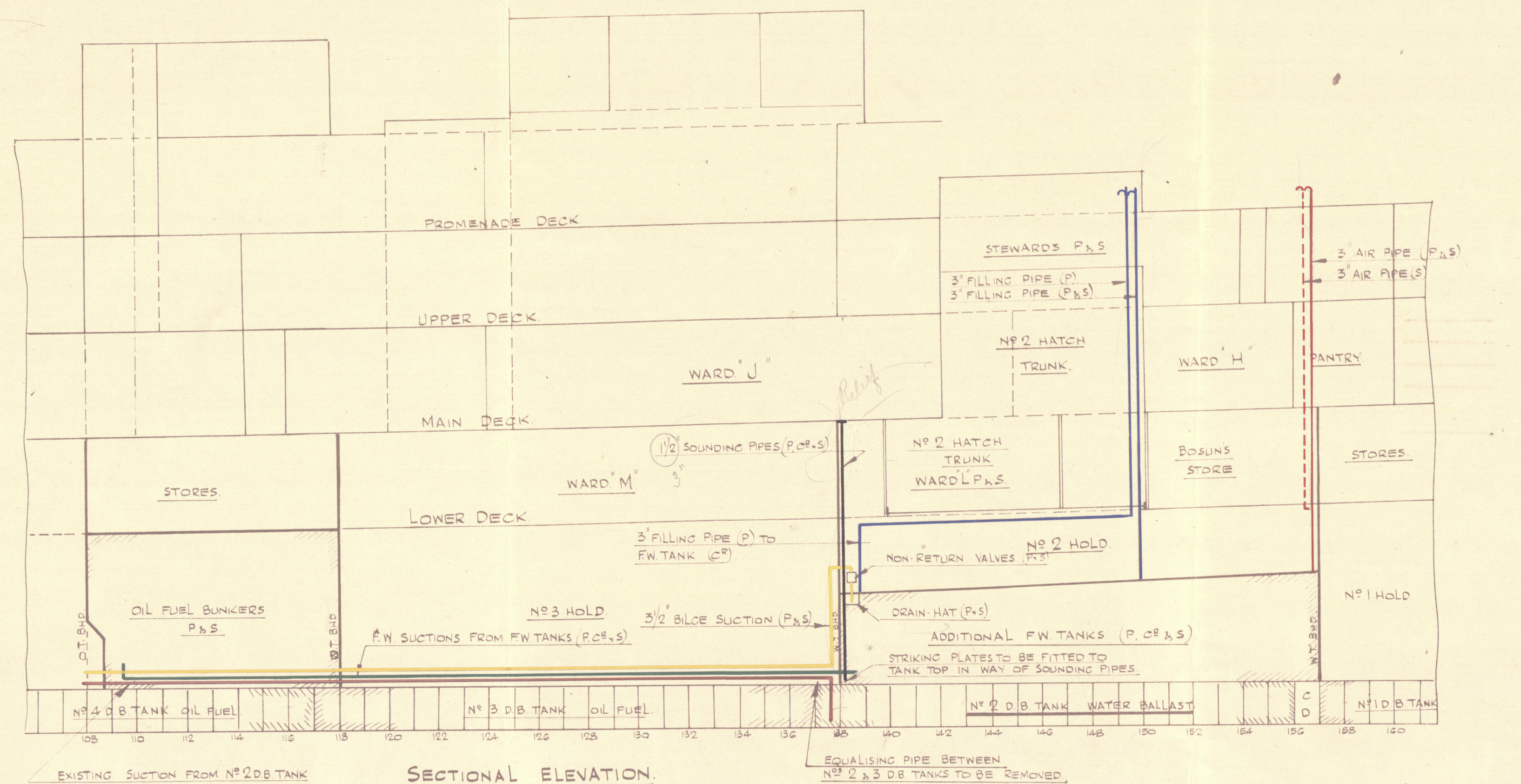
ARRANGEMENT OF AIR, SOUNDING, FILLING, AND SUCTION PIPES TO FRESH WATER TANKS IN No.2 HOLD, AND ALTERATIONS No.2 D.B. TANK TO WATER BALLAST.

SCALE: 1/8" = 1 FOOT.

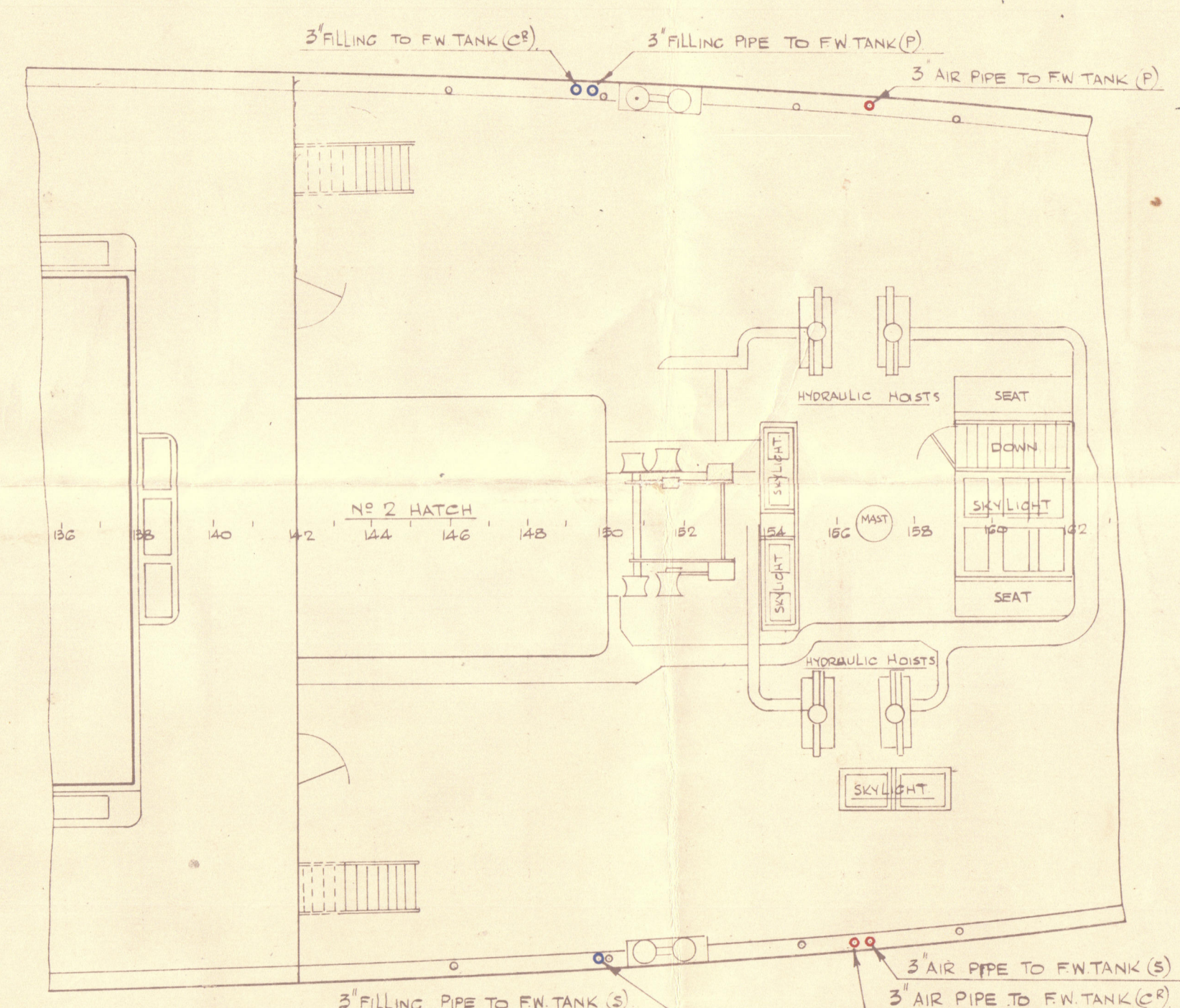
AIR PIPES	SHOWN THUS
SOUNDING PIPES	---
FILLING	---
SUCTION	---
BILGE	---
WATER BALLAST PIPES	---

NOTE

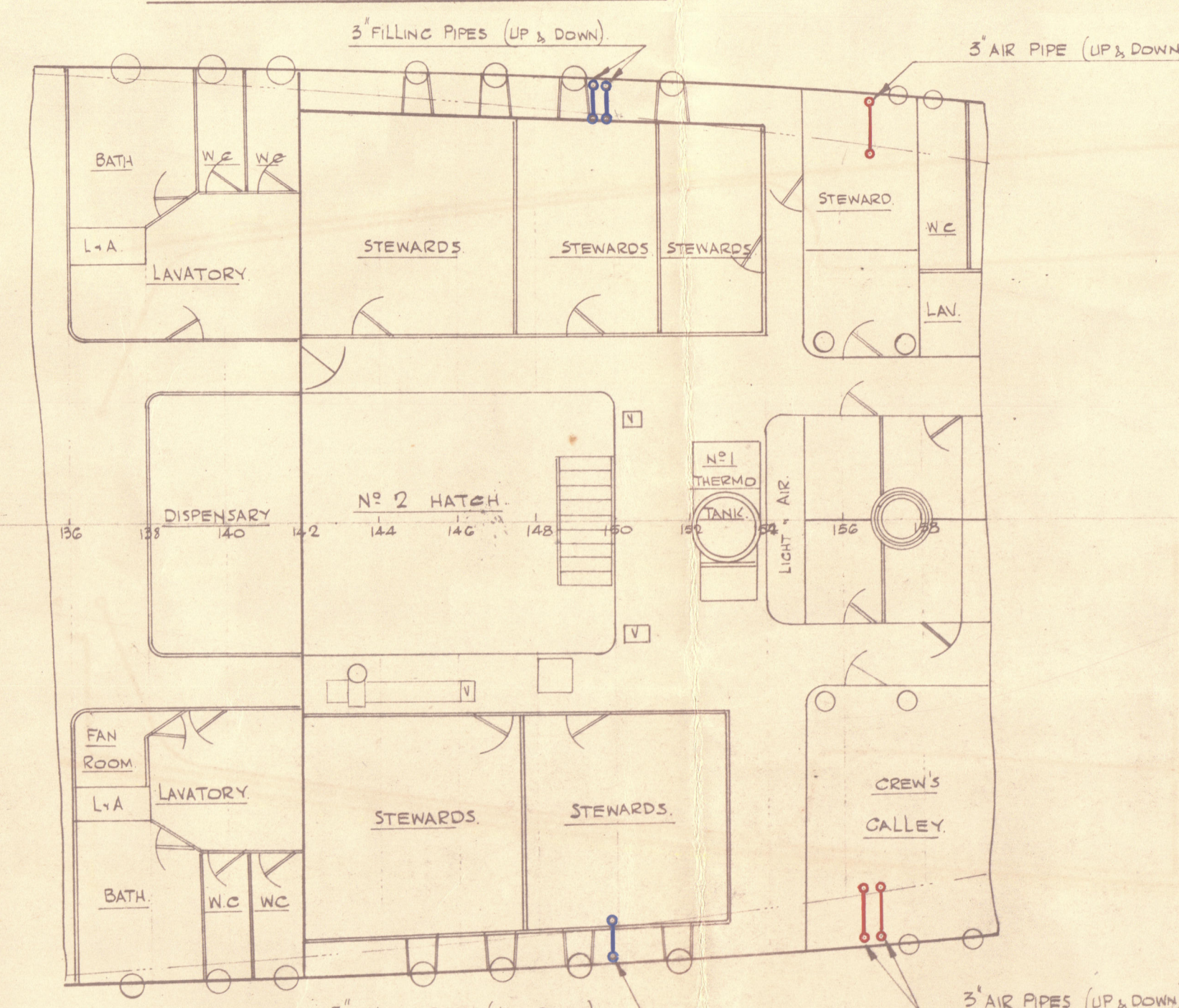
ALL PIPE CONNECTIONS TO No.2 D.B. TANK TO REMAIN AS AT PRESENT EXCEPT SUCTIONS WHICH ARE TO BE CONNECTED TO BALLAST RANGE.
ALL EXISTING PIPING TO No.2 D.B. TANK OR PASSING THROUGH NEW FW TANKS TO BE EXAMINED, TESTED, AND OVERHAULED AS FOUND NECESSARY.



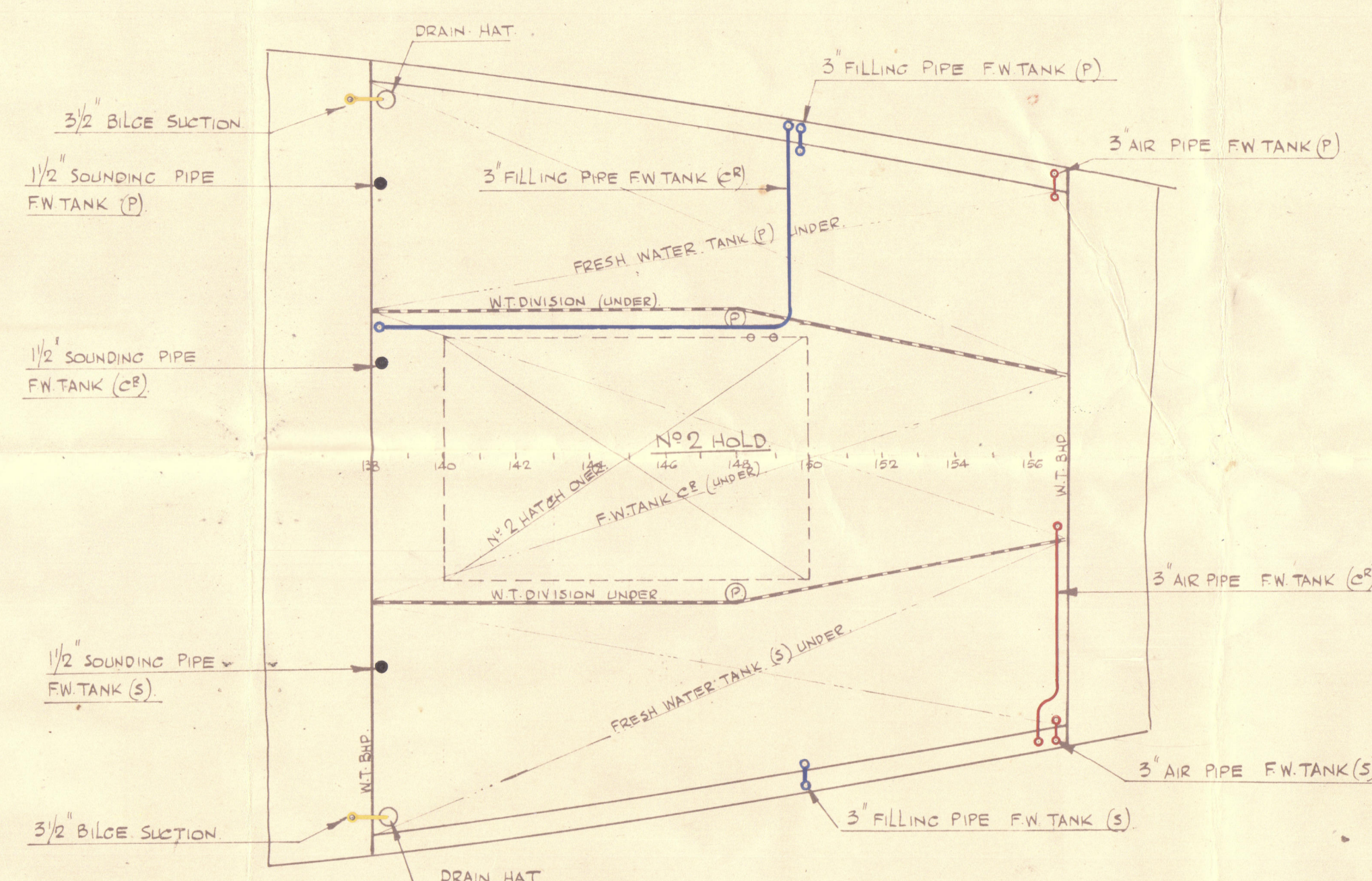
SECTIONAL ELEVATION.



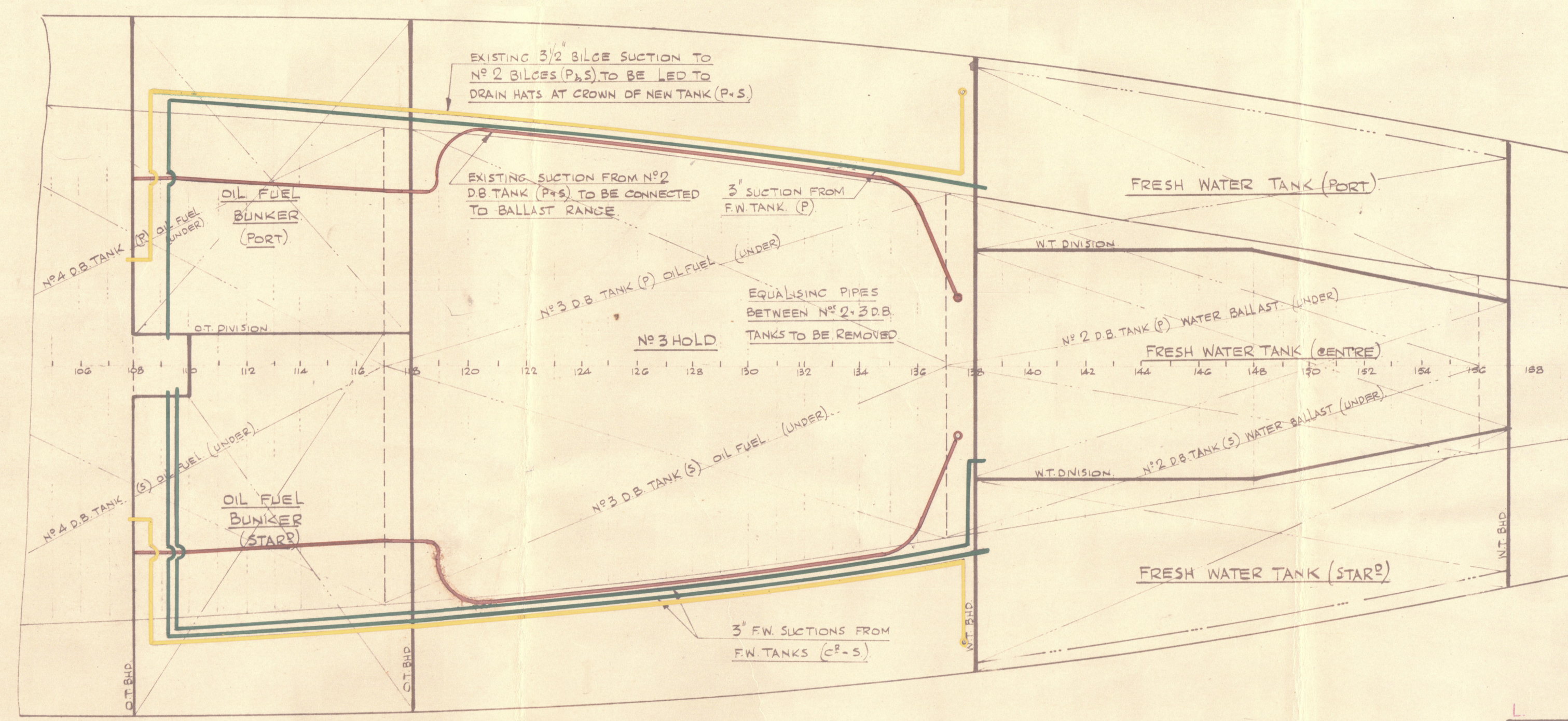
PLAN AT PROMENADE DECK.



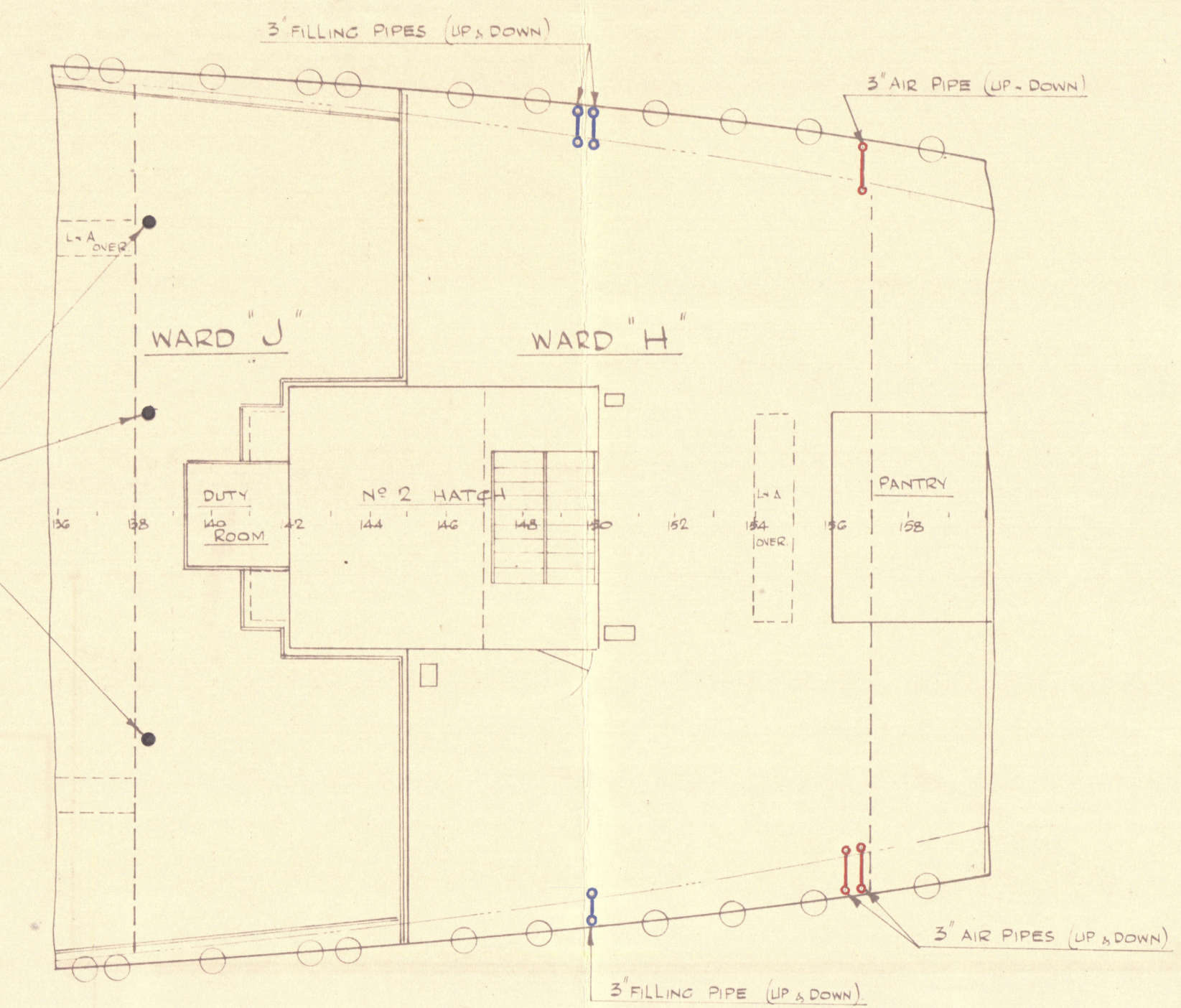
PLAN AT UPPER DECK.



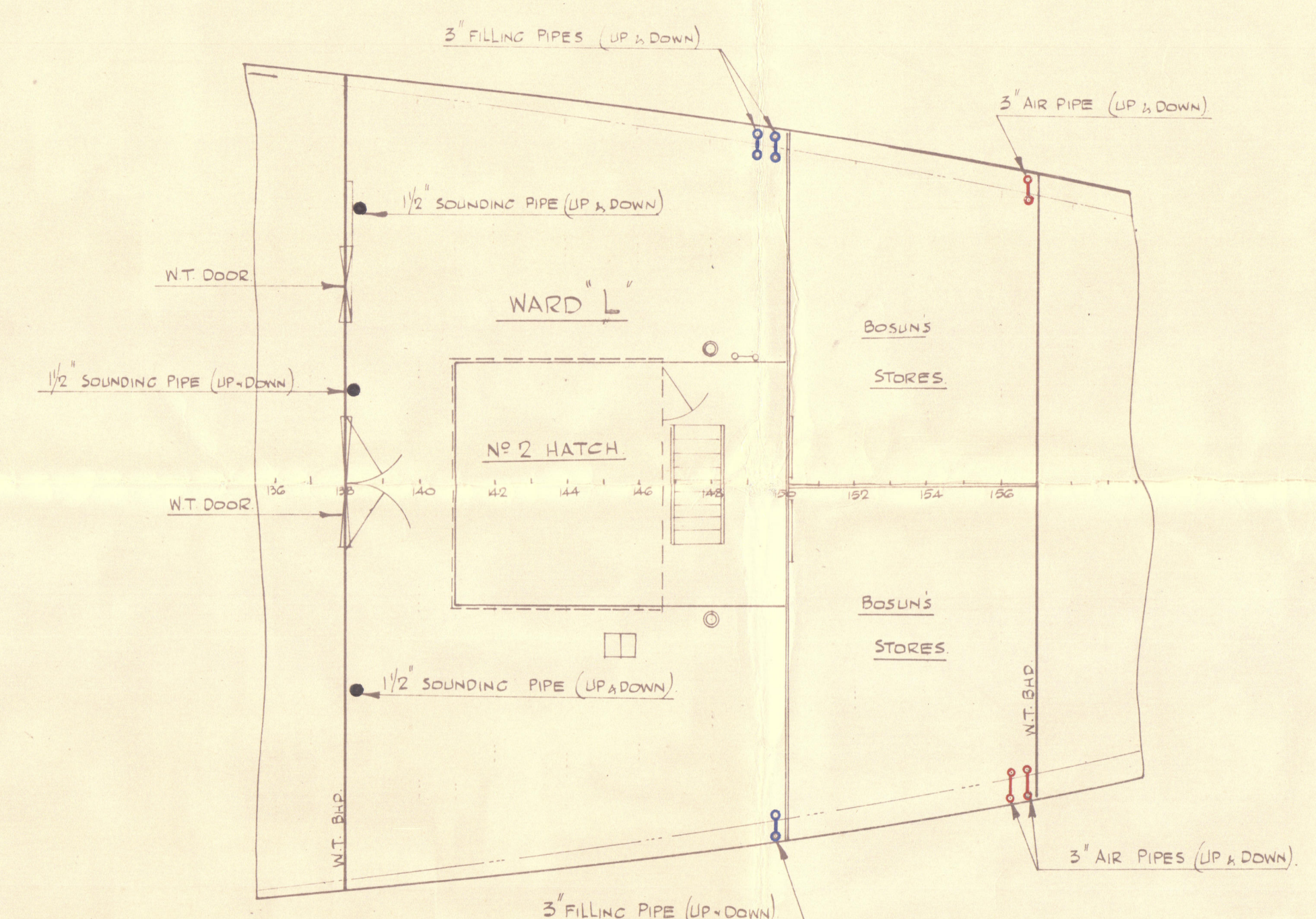
PLAN AT CROWN OF TANK IN No.2 HOLD.



PLAN AT TANK TOP.



PLAN AT MAIN DECK.



PLAN AT LOWER DECK.

CONNECTIONS IN MACHINERY SPACE TO BE ARRANGED BY ENGINEERS DEPT.

Maunqanui

Pipes

002151-002156-0027



© 2020

Lloyd's Register
Foundation

Lloyd's