

17.10.10.  
22.11.10  
25.11.10  
1.2.11

No 479.

# MIDSHIP SECTION

SCALE  $\frac{1}{2}$  INCH = 1 FOOT.

DIMENSIONS 430' x 55'-6" x 42'-6" TO PROM. DK.

LLOYDS 100 A.I. CLASS

## SCANTLING NUMBERS.

TRANSVERSE No [B+D] = under 40

LONGITUDINAL No L x [B+D] = 38700

d = 13.25 LOWER DK.

d = 21.75 MAIN DK.

B. TO PROM. = 10.115

## EQUIPMENT NUMBER.

40 x 430' = 38,700

ERECTOR'S. UPPER DK = 4,346

PROM. DK. = 802

BOAT DK. = 469

42,377

42,687

## EQUIPMENT "b"

- 3. BOWER ANCHORS 207 collective Wt. HALL'S PATENT STOCKLESS
- 1 STREAM 20% RODGERS PATENT EX. STOCK.
- 1 KEDGE 9
- 300 FATHOMS 2 3/8" STUB CHAIN CABLE
- 120 5" STEEL WIRE
- 130 5" TOWLINE
- 4 HANSERS 100 FATHOMS OF 8" CIRCUM. MANILLA.

## RIVETING OF LANDINGS

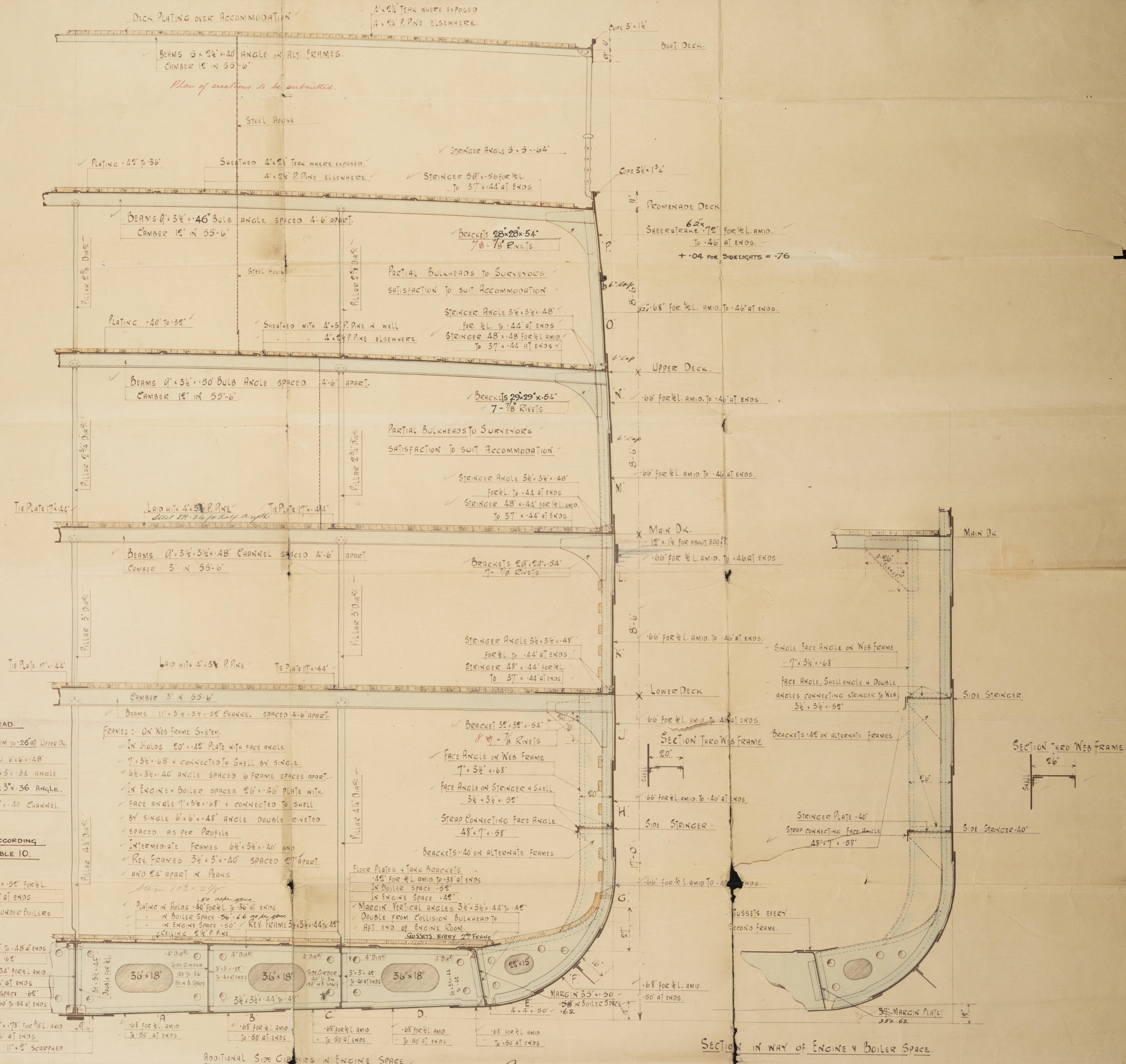
- LANDINGS KEEL TO F. DOUBLE RIVETED WITH 1" RIVETS
- G TO N 8" SINGLE AT ENDS
- O TO P 1" SINGLE AT ENDS

## RIVETING OF BUTTS

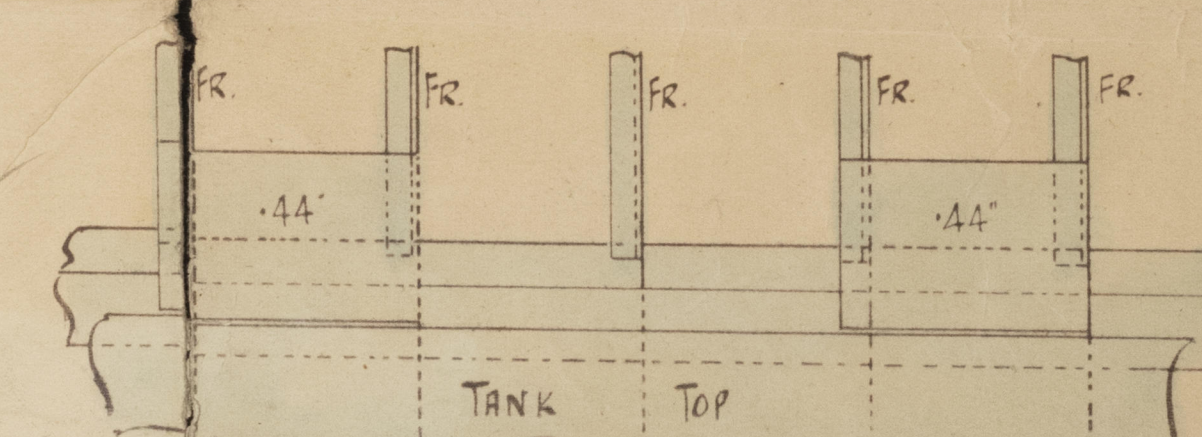
- KEEL PLATE, DOUBLE STRAPS TREBLE RIVETED FOR 3/8" L. TO SINGLE TREBLE RIVETED STRAPS AT ENDS
- FROM A TO F. QUADRUPLE FOR 1/2" L. TREBLE AT ENDS
- G TO N TREBLE RIVETED THROUGHOUT.
- O TO P DOUBLE STRAPS TREBLE RIVETED FOR 1/2" L. SINGLE TREBLE RIVETED STRAPS AT ENDS.
- 7" RIVETS SPACED 60 DIAM. THRO FRAME & SHELL EXCEPT IN WAY OF FORE & AFT PEAK TANKS WHICH ARE 5 DIAM. APART.



002151-002156-0002



## SECTION IN WAY OF ENGINE & BOILER SPACE.



DETAIL OF GUSSET PLATES

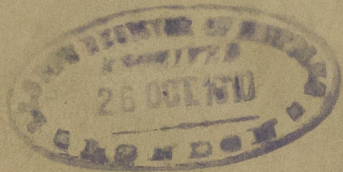
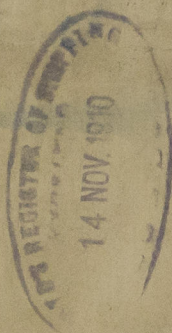
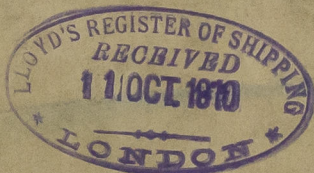
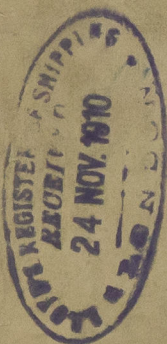
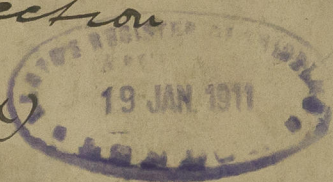


Fairfield S 134 E L

No 479

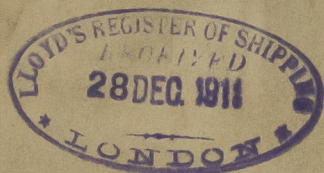
Whiship Section

(amended)



"Maunganui"

GLASGOW REPORT No. 30930.



© 2020

002151-002156-0002 Lloyd's Register Foundation

