

Lloyd's Register of Shipping.

Ship's Name **AVON COAST**Official No. **147391**

Memorandum of alterations reported since ship was surveyed for assignment of Load Lines in **1932**

Tonnage opening aft now permanently closed by securing hatch covers in place and caulking same.

Accommodation for crew now provided at aft end of shelter tween deck with new casing bulkhead fitted just abaft No 3 hatch on upper deck.

Access to accommodation thro' companion on tonnage opening. Companion of substantial steel construction, 3'-0" x 2'-6", with hinged steel door 3'-6" x 24", sill 18" above deck. Door capable of being operated from both sides.

3 new 12" dia' side scuttles fitted to shell plating on p.a.s.s. in way of above accommodation. Scuttles provided with hinged deadlights.

Escape hatch 24" x 24" fitted on shelter deck over above accommodation. Coaming of steel 6" high above deck, with hinged steel watertight cover, secured by dogs, and capable of being operated from both sides.

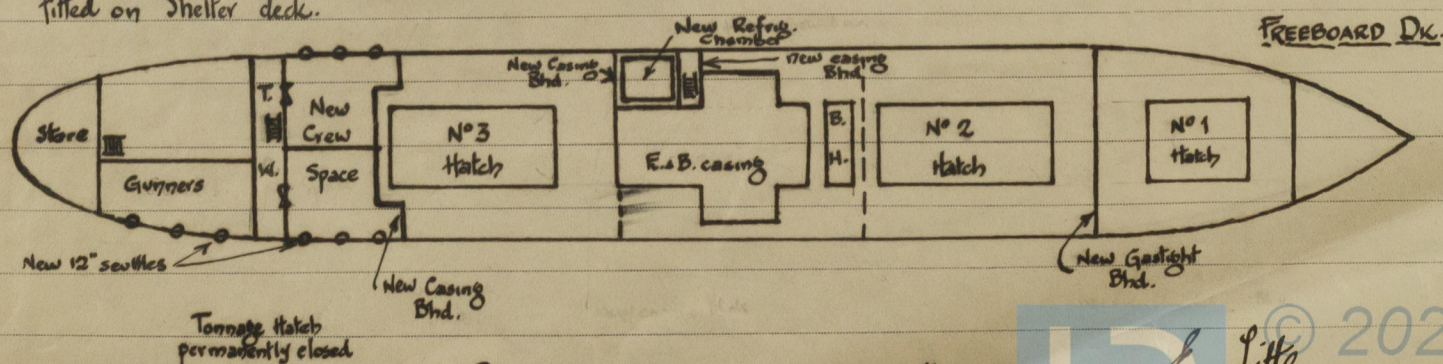
1 new 6" dia' cowl vent and 1 new 9" dia' cowl vent fitted to shelter deck over new accommodation. Coamings 36" high x 30" provided with wood plugs and canvas covers.

Accommodation for gunners now provided on upper deck aft in former store space, on s.s. 3 new 12" dia' side scuttles fitted to shell plating in this space. Scuttles provided with hinged deadlights. Access to gunners' accommodation thro' existing companion on shelter deck aft.

Original crews' quarters in s.s. of deckhouse on shelter deck aft now fitted out as W.C.s. and washhouses. Discharges from W.C.s. led to a new 4" dia' non-return valve on shell plating (s.s.) above freeboard deck. Discharges from washhouses led to a new 2 1/2" dia' non-return valve on shell plating (s.s.) above freeboard deck.

New refrigerated chamber (for stores) fitted on upper deck amidships (p.s.) abreast machinery casing, and enclosed in steel bulkheads. Access thro' opening in sidehouse on shelter deck over.

New gastight bulkhead fitted in shelter tween deck for^d, between 1 & 2, and directly over main bulkhead below. No 1 hold lined for carriage of petrol in cases. Gas extractors fitted on Shelter deck.



Fee £7-7-0

A copy of this Report will be placed on board the vessel.