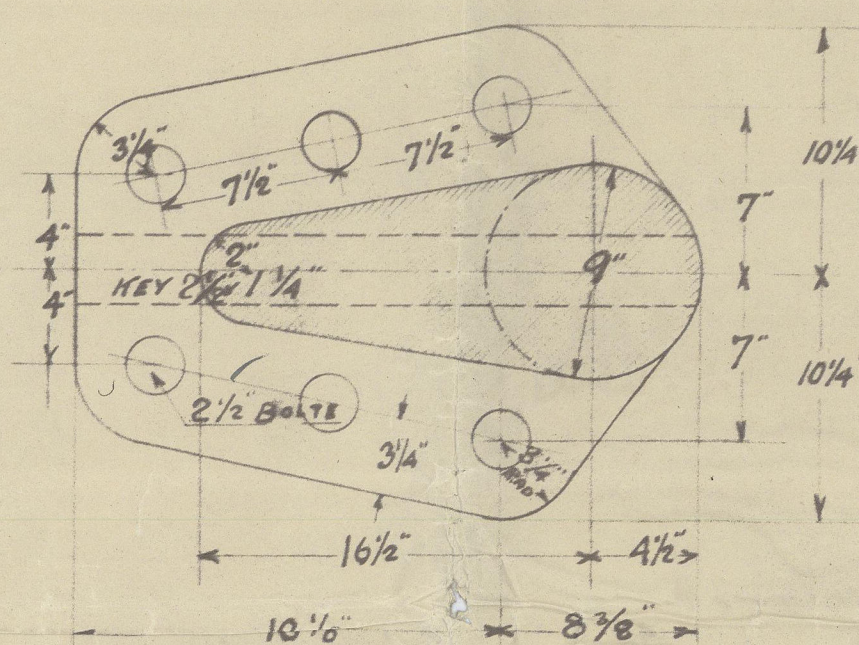
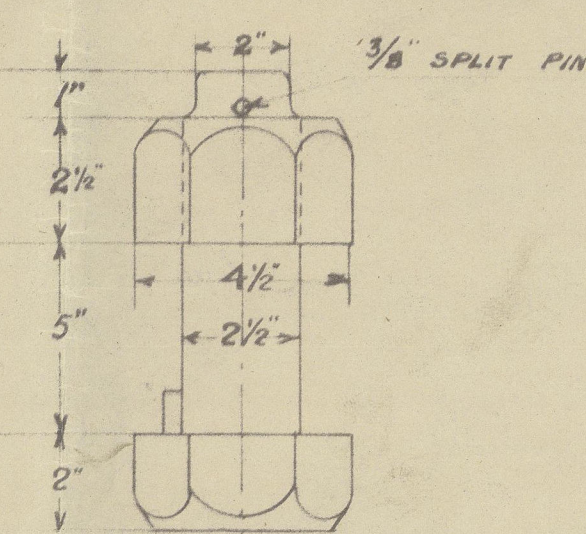
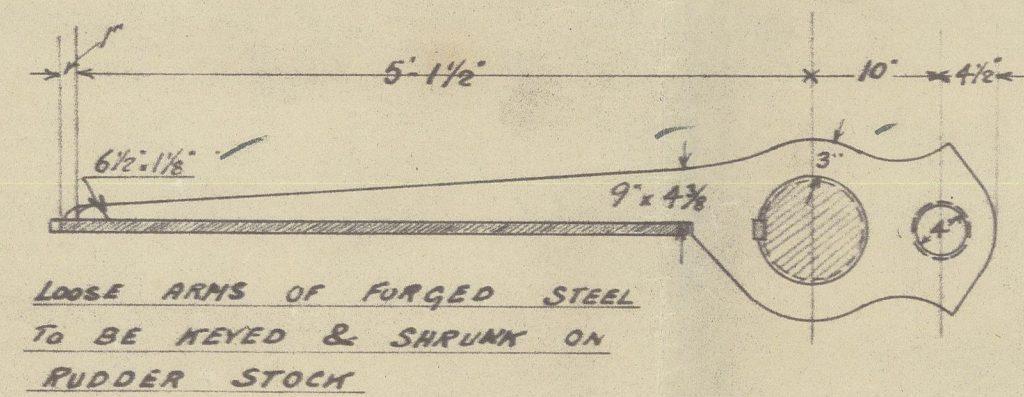
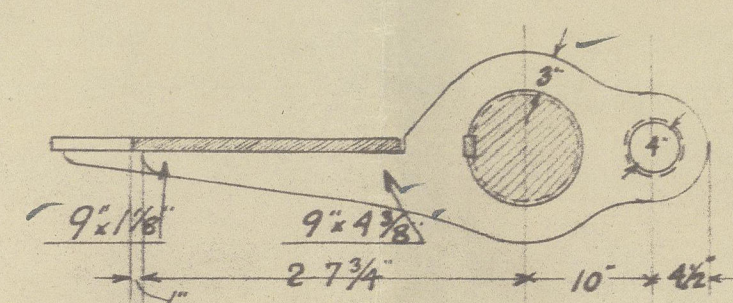


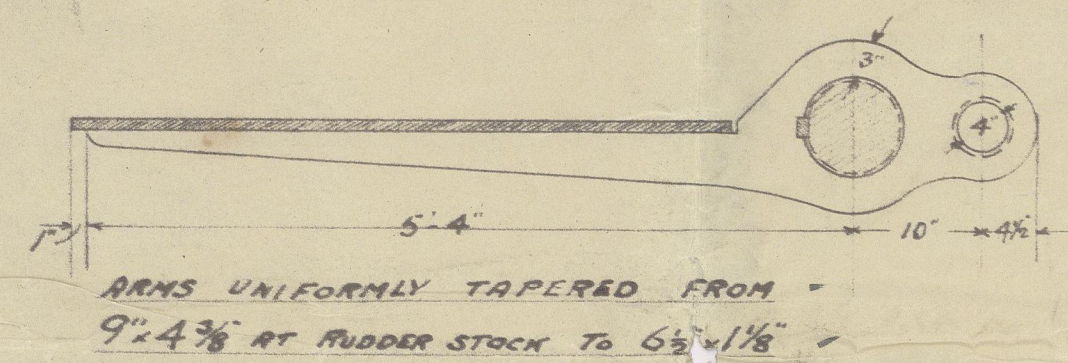
32. 15.



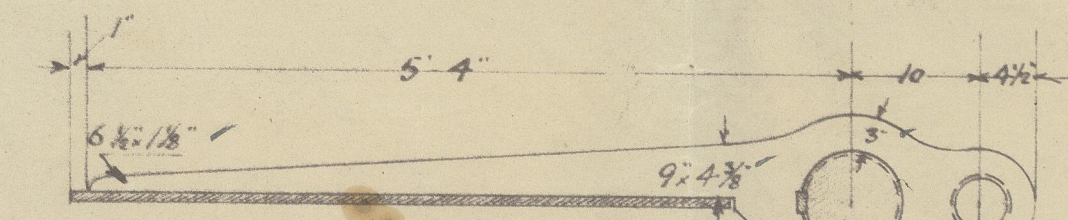
DETAIL OF COUPLING  
SCALE 1 1/2" = 1 FOOT.



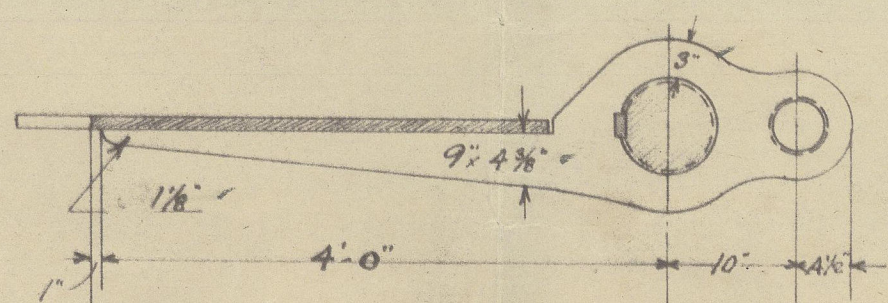
LOOSE ARMS OF FORGED STEEL  
TO BE KEVED & SHRUNK ON  
RUDDER STOCK



ARMS UNIFORMLY TAPERED FROM  
9" x 4 3/8" AT RUDDER STOCK TO 6 1/2" x 1 1/8"



PIVETS IN ARMS TO BE  $\frac{1}{8}$ " DIAM. SPACED  $5\frac{5}{8}$ " APART  $C^A$  TO  $C^A$   
HOLES DRILLED  $1\frac{3}{16}$ " DIAM. & COUNTERSUNK IN ARMS & PLATE.



SPEED OF VESSEL 10½ KNOTS.

RUDDER STOCK  
LOOKING AFT.



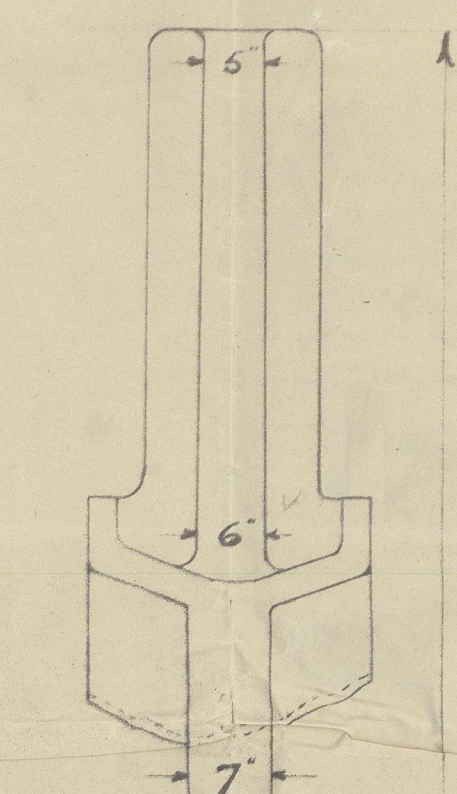
STERNPOST OF CAST STEEL

✓ RUDDER HEAD & MAIN PIECE OF FORGED STEEL,  
WITH FORGED STEEL ARMS SHRUNK ON & KEYS  
TO STOCK

✓ GUDGEONS WITH STEEL BUSHINGS AND  
PINTLES OF STEEL FITTED AS PR PLAN.

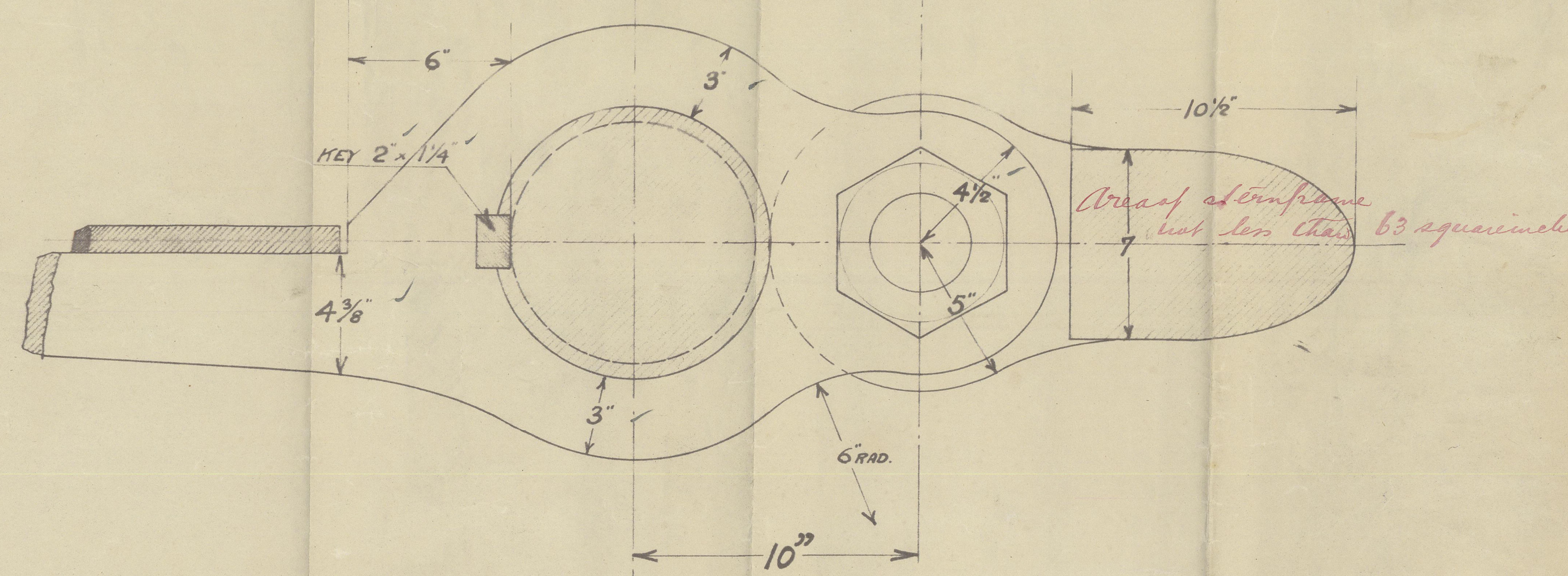
STERN POST

## LOOKING FORWARD



DETAIL OF RUDDER ARM  
AND GUDGEON

SCALE: 3" / FOOT



DETAIL OF STOPPER

ON GUDGEON N° 2

SCALE: 3" = 1 FOOT.

—S. S. N<sup>o</sup> 305.—

—STERNPOST & RUDDER—

SCALE  $\frac{3}{4}"$  &  $3" = 1$  FOOT

60/

---

3. 2. 15.

305  
14  
C. J. H.  
---  
16 JAN. 1915  
3/4" x 3" = 1 FOOT.



Stempost & Rudder  
for  
Yard No 305  
to be built by  
Messrs. Burmeister  
& Wain.  
Copenhagen



Original  
S.S. "Nordlys"  
Cpn 5200.

Copy to B. & W.



© 2020

Lloyd's Register  
Foundation

002127-002137-0034