

# Lloyd's Register of Shipping.

## SURVEYS FOR FREEBOARD.

### (CONDITIONS OF ASSIGNMENT.)

 Index No. \_\_\_\_\_  
 (For London Office only.)

Ship's Name "SPORTS"

Port of Survey NEWCASTLE-ON-TYNE

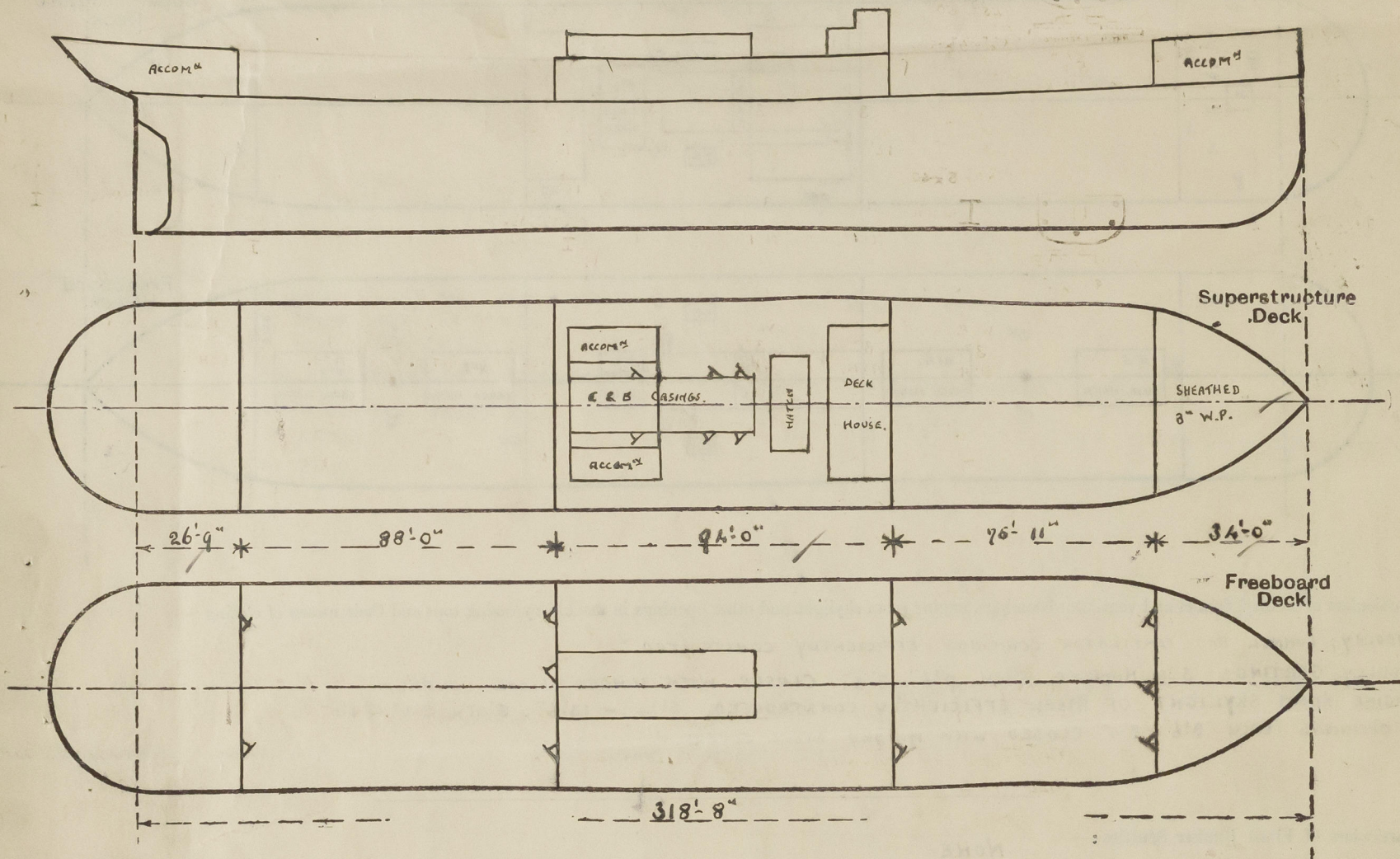
Official Number 181754

Surveyor's Signature Alfred T. J. Sheffer

Nationality and Port of Registry BRITISH LONDON

Date of Survey 31<sup>st</sup> Oct 1947.

Disposition and dimensions of superstructures, trunks, deckhouses and machinery casings to be inserted in the diagrams and tabular statement:—



Particulars of Superstructures, Trunks, Casings, Deckhouses.

	Coaming	Plating	Stiffeners	Spacing	End Attachments of Stiffeners	Size of Openings	Height of Sills	Height of Casings
Poop Bulkhead ...	40 ✓	40 ✓	5" x 3" x 40 O.A.	2'-5"	BKTS. AT BOTTOM ONLY.	12 4'-9" x 2'-0" 12 4'-3" x 2'-0"	18"	7'-3"
Raised Quarter Deck Bulkhead ...	✓	✓	✓	✓	✓	✓	✓	✓
Bridge, After Bulkhead ...	40 ✓	35 ✓	5" x 3" x 40 O.A. 4 1/2" x 3" x 40 2	2'-9"	NONE	12 5'-0" x 2'-0" 12 5'-0" x 2'-3" 12 5'-0" x 2'-6"	18"	7'-6"
Bridge, Forward Bulkhead ...	45	40	8" x 3 1/2" x 3 1/2" x 40 C	2'-3"	BKTS. TOP & BOTTOM	22 5'-2" x 2'-11"	18"	7'-6"
Forecastle Bulkhead ...	25	25	3 1/2" x 3" x 35 O.A.	2'-7"	NONE	32 5'-0" x 2'-0"	18" & 15"	7'-3" PLUS 3" WOOD SHEATHING.
Trunk, Aft ...	✓	✓	✓	✓	✓	✓	✓	✓
Trunk, Forward ...	✓	✓	✓	✓	✓	✓	✓	✓
Exposed Machinery Casings on Freeboard or Raised Quarter Decks ...	THIS IS PART OF THE BRIDGE AFTER BULKHEAD NOTED ABOVE. 40	35	5" x 3" x 40 O.A.	2'-9"	NONE	12 5'-0" x 2'-3" 2 PORT & 2 STARBOARD 5'-0" x 2'-4" 5'-0" x 2'-0"	18"	7'-6"
Exposed Machinery Casings on Superstructure Decks ...	40	30	4" x 3" x 35 O.A.	2'-0"	BKTS. AT TOP	5'-0" x 2'-0"	18"	7'-6"
Machinery Casings within Superstructures not fitted with Class I Closing Appliances ON BRIDGE DECK ...	35	30	4" x 3" x 35 O.A.	2'-0"	BKTS. AT TOP	5'-1" x 2'-0"	18"	7'-2"
Deckhouses on Flush Deck Ships ...	✓	✓	✓	✓	✓	✓	✓	✓

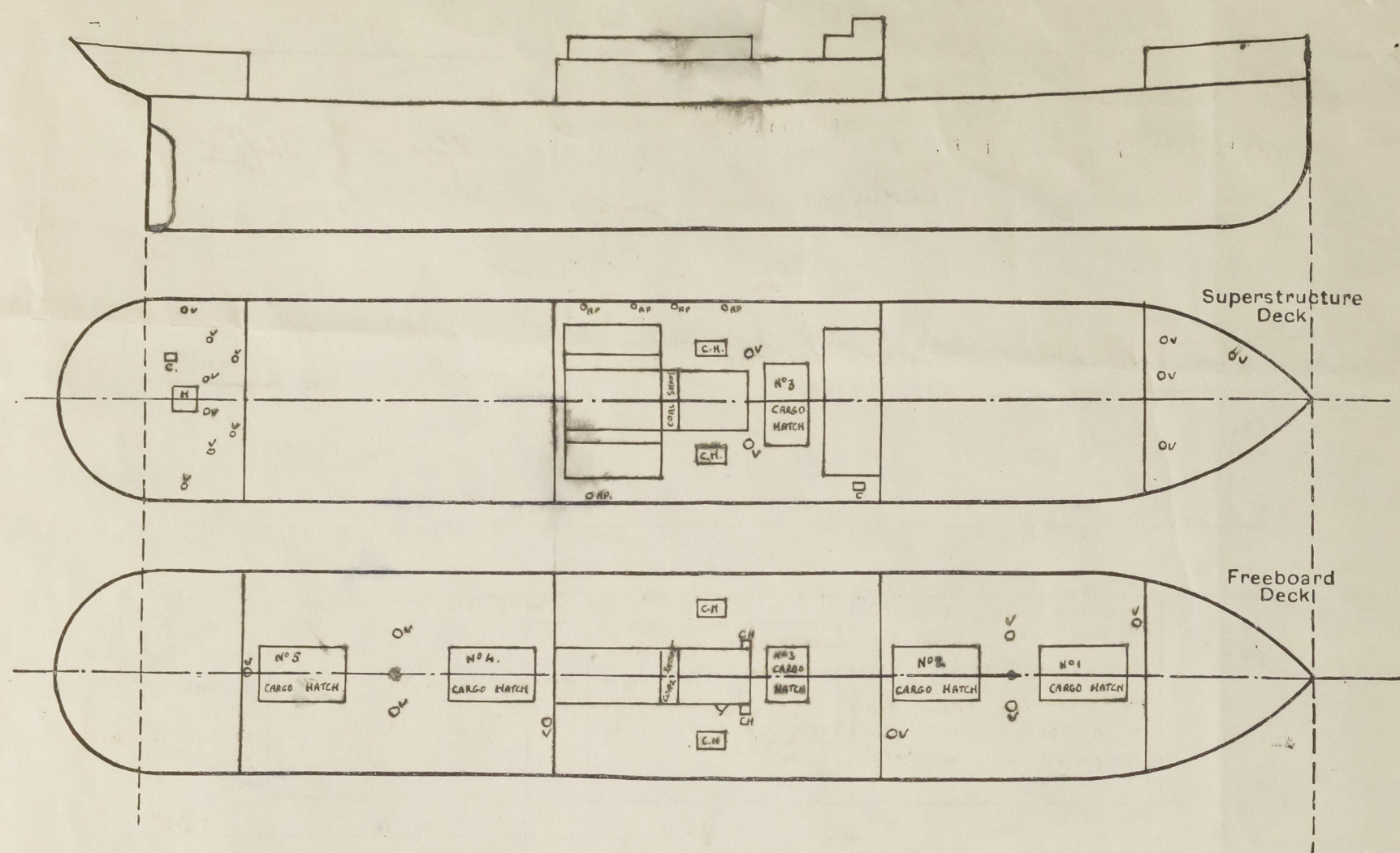
Particulars of Closing Appliances (state if capable of being manipulated from both sides).

Poop Bulkhead ...	HINGED STEEL WATERTIGHT DOORS CAPABLE OF BEING MANIPULATED FROM BOTH SIDES ✓
Raised Quarter Deck Bulkhead ...	✓
Bridge, After Bulkhead ...	HINGED STEEL WATERTIGHT DOORS CAPABLE OF BEING MANIPULATED FROM ONE SIDE ONLY. ✓
Bridge, Forward Bulkhead ...	HINGED STEEL WATERTIGHT DOORS CAPABLE OF BEING MANIPULATED FROM BOTH SIDES. ✓
Forecastle Bulkhead ...	HINGED STEEL DOORS CAPABLE OF BEING MANIPULATED FROM BOTH SIDES. ✓
Exposed Machinery Casings on Freeboard or Raised Quarter Decks ..	HINGED STEEL WATERTIGHT DOOR CAPABLE OF BEING MANIPULATED FROM BOTH SIDES. ✓
Exposed Machinery Casings on Superstructure Decks ...	HINGED STEEL DOORS CAPABLE OF BEING MANIPULATED FROM BOTH SIDES. ✓
Machinery Casings within Superstructures not fitted with Class I Closing Appliances ON BRIDGE DECK ...	HINGED STEEL DOORS CAPABLE OF BEING MANIPULATED FROM BOTH SIDES. ✓
Deckhouses on Flush Deck Ships ...	✓



# PARTICULARS OF PROTECTION TO OPENINGS, ETC.

The following diagrams should be used to indicate the positions of cargo and coaling hatchways, gangway, cargo and coaling ports, ventilators, companionways, etc., which would affect the seaworthiness of the ship:—



Particulars of fiddle, funnel and ventilator coamings, engine room skylight and other openings in machinery casing tops and their means of closing:—

FIDDLE, FUNNEL AND VENTILATOR COAMINGS EFFICIENTLY CONSTRUCTED ✓  
 FIDDLE GRATINGS 3 IN NUMBER EACH 7'6" x 3'3" CLOSED WITH HINGED STEEL COVERS. ✓  
 ENGINE ROOM SKYLIGHT OF STEEL EFFICIENTLY CONSTRUCTED. SIZE:— 13'6" x 8'0" x 2'4" x 1'0"  
 6 OPENINGS EACH 3'6" x 3'0" CLOSED WITH HINGED STEEL COVERS. ✓

Particulars of Flush Bunker Scuttles:— NONE

Particulars of Companionways:—  
 ON POOP DECK. ONE OF STEEL EFFICIENTLY CONSTRUCTED CLOSED BY HINGED WOOD DOOR STRONGLY CONSTRUCTED. SIZE 3'11" x 2'0" SILL 12" CAPABLE OF BEING MANIPULATED FROM BOTH SIDES. ✓  
 ON BRIDGE DECK. ONE OF STEEL EFFICIENTLY CONSTRUCTED CLOSED BY HINGED STEEL DOOR CAPABLE OF BEING MANIPULATED FROM BOTH SIDES. SIZE:— 4'9" x 2'0" SILL 18" ✓

Particulars of Ventilators in exposed positions on freeboard and superstructure decks:—

FREEBOARD DECK TO HOLDS 1 @ 11 1/4" DIA 3'0" HIGH ✓  
 2 @ 17 1/2" " 3'6" " ✓  
 3 @ 16 1/2" " 3'6" " ✓  
 1 @ 18" " 10'0" EFFICIENTLY SUPPORTED. ✓  
 1 @ 16 1/2" " 10'0" " " ✓  
 BRIDGE DECK TO BUNKERS 2 @ 18" " 21'0" SAMSON POSTS EFFICIENTLY SUPPORTED. ✓  
 POOP DECK TO ACCOMMODATION 8 @ 6" " MUSHROOM TYPE ✓  
 FORECASTLE DECK TO ACCOMMODATION 4 @ 8" DIA. 10 1/2" HIGH ✓  
 ALL VENTILATOR COAMINGS EFFICIENTLY CONSTRUCTED AND ALL EXCEPT MUSHROOM TYPE PROVIDED WITH WOOD PLUGS AND CANVAS COVERS. ✓

Particulars of Air Pipes in exposed positions on freeboard, raised quarter, or superstructure decks:—

ON BRIDGE DECK 1 @ 3 1/2" DIA. 19" HIGH. GOOSE NECK. ✓  
 4 @ 7" x 5" OVAL 9" " " " ALL PROVIDED WITH WOOD PLUGS. ✓

Particulars of Gangway Cargo and Coaling Ports:—

NONE.

*Sports.*

Particulars of Scuppers and Sanitary Discharge Pipes:—

FROM FORECASTLE SPACE	ONE 4" DIA. SANITARY DISCHARGE	PORT SIDE.	STARBOARD
" BRIDGE SPACE	TWO 4" " " " " "	" " " "	" " " "
" POOP SPACE	" 4" " " " " "	" " " "	" " " "

ALL FITTED WITH SUBSTANTIAL STORM VALVES. ✓

SCUPPERS CUT THROUGH STRINGER ANGLE IN FORE AND AFTER WELLS. ✓

Particulars of Side Scuttles:—

IN FORECASTLE (6 PORT AND 6 STARBOARD) 10 @ 8" DIA. AND 2 @ 10" DIA. ✓  
 IN BRIDGE SPACE (2 STARBOARD) 2 @ 10" DIA. ✓  
 IN POOP SPACE (5 PORT AND 5 STARBOARD) 10 @ 10" DIA. ✓  
 ALL OF SUBSTANTIAL CONSTRUCTION AND FITTED WITH HINGED DEADLIGHTS. ✓  
 IN FORECASTLE FRONT BND. 2 @ 13" DIA; 1 @ 9 1/2" DIA; 1 @ 7 1/2" DIA. } NOT FITTED WITH DEADLIGHTS.  
 " BRIDGE " " 3 @ 11" DIA.  
 " POOP " " 6 @ 9 1/2" " }

Vertical distance of Sill of lowest Side Scuttle above top of keel NONE BELOW FREEBOARD DECK.

Particulars of Guard Rails:—

POOP DECK 3'6" HIGH RODS 17" APART. ✓  
 BRIDGE " " " " " " ✓  
 FORECASTLE " 4'0" " " 19 1/2" " ✓

Particulars of Gangways, Lifelines, etc:—

LIFELINES PROVIDED IN FORE AND AFTER WELLS FOR THE PROTECTION OF THE CREW. ✓

## Particulars of Freeing Arrangements.

	Length of Bulwark	Height of Bulwark	Size of Freeing Ports	Number each side	Area each side	Rule area each side
After Well ... ..	88'-0"	4'-3"	3'-6" x 1'-7"	3	16.59 sq ft.	17.6 sq ft.
Forward Well ... ..	75'-11"	4'-3"	3'-5" x 1'-6"	3	15.39 sq ft.	15.2 sq ft.

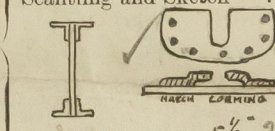
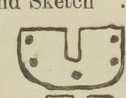
State position of each freeing port ... .. { After Well:— MEASURED FROM FORWARD, 12'6" - 42'0" - 72'0" } HEIGHT ABOVE DECK 11"  
 (F. and A. position and height above deck edge) { Forward Well:— " " " 7'6" - 38'0" - 62'0" }

State whether the freeing ports are fitted with shutters, bars, or rails, and give particulars of such:— RAILS - ONE AT CENTRE. ✓

Additional area where sheer is less than standard.



# PARTICULARS OF PROTECTION TO OPENINGS, ETC.

HATCHWAYS ON FREEBOARD AND SUPERSTRUCTURE DECKS.										
	FREEBOARD DECK				BRIDGE SPACE			BRIDGE DECK		POOP DECK
Description of Hatchway	Nº 1 CARGO	Nº 2 CARGO	Nº 4 CARGO	Nº 5 CARGO	Nº 3 CARGO	BUNKER 1 PART + 1 STAB	HATCHES 1 PART + 1 STAB	Nº 3 CARGO	SIDE BUNKERS	POOP SPACE
Dimensions of Hatchway	24'-4" x 17'-2"	26'-4" x 17'-2"	26'-4" x 17'-2"	24'-4" x 17'-2"	10'-3" x 17'-2"	5'-11" x 2'-11"	2'-0" x 1'-8 1/2"	10'-2" x 17'-2"	14'-8" x 3'-0"	8'-2" x 8'-2"
COAMINGS	Height above Deck ... 8'-8" Thickness ... 50 Sides ... 40 Ends ... 40 Stiffeners ... 7" Bulb-Coupler Brackets, Stays ... 2	Height above Deck ... 3'-8" Thickness ... 50 Sides ... 40 Ends ... 40 Stiffeners ... 7" Bulb-Coupler Brackets, Stays ... 2	Height above Deck ... 3'-8" Thickness ... 50 Sides ... 40 Ends ... 40 Stiffeners ... 7" Bulb-Coupler Brackets, Stays ... 2	Height above Deck ... 3'-8" Thickness ... 50 Sides ... 40 Ends ... 40 Stiffeners ... 7" Bulb-Coupler Brackets, Stays ... 2	Height above Deck ... 3'-8" Thickness ... 50 Sides ... 40 Ends ... 40 Stiffeners ... 7" Bulb-Coupler Brackets, Stays ... 2	Height above Deck ... 3'-8" Thickness ... 50 Sides ... 40 Ends ... 40 Stiffeners ... 7" Bulb-Coupler Brackets, Stays ... 2	Height above Deck ... 3'-8" Thickness ... 50 Sides ... 40 Ends ... 40 Stiffeners ... 7" Bulb-Coupler Brackets, Stays ... 2	Height above Deck ... 3'-8" Thickness ... 50 Sides ... 40 Ends ... 40 Stiffeners ... 7" Bulb-Coupler Brackets, Stays ... 2	Height above Deck ... 3'-8" Thickness ... 50 Sides ... 40 Ends ... 40 Stiffeners ... 7" Bulb-Coupler Brackets, Stays ... 2	Height above Deck ... 3'-8" Thickness ... 50 Sides ... 40 Ends ... 40 Stiffeners ... 7" Bulb-Coupler Brackets, Stays ... 2
HATCH BEAMS	Number ... 1 Spacing ... 12'-2" Scantling and Sketch ...  Bearing Surface ... 5 1/2" x 5 1/2" SEE SKETCH ABOVE	Number ... 1 Spacing ... 13'-2" Scantling and Sketch ... AS NO 1 DO	Number ... 1 Spacing ... 13'-2" Scantling and Sketch ... AS NO 1 DO	Number ... 1 Spacing ... 12'-2" Scantling and Sketch ... AS NO 1 DO	Number ... 1 Spacing ... 12'-2" Scantling and Sketch ... NONE DO	Number ... 1 Spacing ... 12'-2" Scantling and Sketch ... NONE DO	Number ... 1 Spacing ... 12'-2" Scantling and Sketch ... NONE DO	Number ... 1 Spacing ... 12'-2" Scantling and Sketch ... NONE DO	Number ... 1 Spacing ... 12'-2" Scantling and Sketch ... NONE DO	Number ... 1 Spacing ... 12'-2" Scantling and Sketch ... NONE DO
FORE AND AFTERS	Number ... 3 Spacing ... 4'-3 1/2" Unsupported Lengths ... 11'-8 1/2" Scantling* and Sketch ...  Bearing Surface ... 8 1/2" x 5 1/2" SEE SKETCH	Number ... 3 Spacing ... 4'-3 1/2" Unsupported Lengths ... 12'-8 1/2" Scantling* and Sketch ... AS NO 1 DO	Number ... 3 Spacing ... 4'-3 1/2" Unsupported Lengths ... 12'-8 1/2" Scantling* and Sketch ... AS NO 1 DO	Number ... 3 Spacing ... 4'-3 1/2" Unsupported Lengths ... 11'-8 1/2" Scantling* and Sketch ... AS NO 1 DO	Number ... 3 Spacing ... 4'-3 1/2" Unsupported Lengths ... 10'-0" Scantling* and Sketch ... CENTRE 12" x 5" x 5" x 40 SIDES 7" x 3 1/2" x 3 1/2" x 35 I SECTION DO	Number ... 3 Spacing ... 4'-3 1/2" Unsupported Lengths ... 10'-0" Scantling* and Sketch ... CENTRE 12" x 5" x 5" x 40 SIDES 7" x 3 1/2" x 3 1/2" x 35 I SECTION DO	Number ... 3 Spacing ... 4'-3 1/2" Unsupported Lengths ... 10'-0" Scantling* and Sketch ... CENTRE 12" x 5" x 5" x 40 SIDES 7" x 3 1/2" x 3 1/2" x 35 I SECTION DO	Number ... 3 Spacing ... 4'-3 1/2" Unsupported Lengths ... 10'-0" Scantling* and Sketch ... CENTRE 12" x 5" x 5" x 40 SIDES 7" x 3 1/2" x 3 1/2" x 35 I SECTION DO	Number ... 3 Spacing ... 4'-3 1/2" Unsupported Lengths ... 10'-0" Scantling* and Sketch ... CENTRE 12" x 5" x 5" x 40 SIDES 7" x 3 1/2" x 3 1/2" x 35 I SECTION DO	Number ... 3 Spacing ... 4'-3 1/2" Unsupported Lengths ... 10'-0" Scantling* and Sketch ... CENTRE 12" x 5" x 5" x 40 SIDES 7" x 3 1/2" x 3 1/2" x 35 I SECTION DO
HATCH COVERS	Material ... W.P. Thickness ... 3" How fitted ... ATH. Bearing Surface ... 2 1/2"	Material ... W.P. Thickness ... 3" How fitted ... ATH. Bearing Surface ... 2 1/2"	Material ... W.P. Thickness ... 3" How fitted ... ATH. Bearing Surface ... 2 1/2"	Material ... W.P. Thickness ... 3" How fitted ... ATH. Bearing Surface ... 2 1/2"	Material ... W.P. Thickness ... 3" How fitted ... ATH. Bearing Surface ... 2 1/2"	Material ... W.P. Thickness ... 3" How fitted ... ATH. Bearing Surface ... 2 1/2"	Material ... W.P. Thickness ... 3" How fitted ... ATH. Bearing Surface ... 2 1/2"	Material ... W.P. Thickness ... 3" How fitted ... ATH. Bearing Surface ... 2 1/2"	Material ... W.P. Thickness ... 3" How fitted ... ATH. Bearing Surface ... 2 1/2"	Material ... W.P. Thickness ... 3" How fitted ... ATH. Bearing Surface ... 2 1/2"
Spacing of Cleats	24"	24"	24"	24"	24"	24"	24"	24"	24"	24"
Number of Tarpaulins	2	2	2	2	1	1	1	2	2	2

\*Are wood fore and afters steel shod at all bearing surfaces? ☒  
 Are battens and wedges efficient and in good condition? ☒  
 Are tarpaulins in good condition and in accordance with rule requirements? ☒  
 Are lashings provided in accordance with rule requirements? ☒

Particulars of any special features:—

THERE IS A HATCHWAY ON FIDDLER TOP TO COAL SHOOT. SIZE - 15'9" x 4'2" COAMING 8" x 40" CLOSED BY HINGED STEEL COVERS, SECURED BY TURNBUCKLES.

THERE IS A DOORWAY TO THE BOLLERROOM VIA THE MACHINERY CASINGS IN THE BRIDGE SPACE. STAB SILL, 18" CLOSED BY HINGED STEEL DOOR CAPABLE OF BEING OPERATED FROM BOTH SIDES.

Endorsement at first survey and at surveys for renewal of Certificate:—

The fittings and appliances are in accordance with the particulars shown on this form (or as now modified) and are in good condition.