

61 SHIP CO.

S. S. N° 507-S

MIDSHIP SECTION.

SCALE 1/2 INCH = ONE FOOT.

CLASS. 103A- with freeboard corresponding to a summer moulded draught of 18'-0"

DIMENSIONS

LENGTH (L)	310'
BREADTH (B)	42'
DEPTH (D)	26'
DRAFT (A)	18'

#### HOLD FRAMES

N° VALUE:  $3.0 \times 8.64 \times 8.64 \times 8.64 = 18.52$   
K° =  $3.0 \times 8.64 \times 8.64 \times 8.64 = 8.02$

#### TRUSS OR FRAMES

N° VALUE:  $3 \times 8 \times 8 \times 8 \times 8 = 7.68$   
K° =  $3 \times 8 \times 8 \times 8 \times 8 = 4.51$

#### PIKE FRAMES

N° VALUE:  $2.0 \times 7 \times 7 \times 7 \times 7 = 11.47$   
K° =  $2.0 \times 7 \times 7 \times 7 \times 7 = 6.58$

OPEN FLOORS: FRS N° =  $18 \times 30 = 54.00$   
REV. FRS N° =  $18 \times 30 = 45.00$

BEAMS: N° VALUE:  $3.0 \times 7.0 \times 8.0 = 16.80$  MAIN OR  
=  $3.0 \times 6.6 \times 7.5 = 11.55$  SPACER OR  
=  $3.0 \times 7.0 \times 5.0 = 10.50$  BRIDGE OR  
=  $3.0 \times 5.6 \times 5.0 = 8.40$  FLOOR OR  
=  $4.0 \times 7.0 \times 2.0 = 5.60$  BOAT OR

STEM: S° = 2° STERNFRAME: S° = 6° (Bolt Boss) CLASHWHEEL  
T° = 10° INCREASED AS PER RULE

RIBBON AS PER RULE FOR SPACER OF 12 KNOTS  
FRAMES SPACED 36" APART OF 5' 3" 40" 8' 4" 70"

MAIN DECK: THIN OR FRAMES 6' 3" 40" 8' 4" 70"  
SCAFFOLD AS SHOWN

FRAMES IN PEAK: 6' 3" 40" 8' 4" 70" SPACED 24" APART  
ALL TO FLOOR & SPACER DECK

#### DOUBLE BOTTOM

CENTRAL GIRDER: 30" 44" FOR 2' 4" TO 36" AT ENDS & 52" IN R.C. SPACE  
TOP ANGLE: 3' 13" 30" 38" N.E.S. 44" N.E.S. (DOUBLE FOR & AT)

BOTTOM ANGLE: 3' 13" 30" 38" N.E.S. 44" N.E.S. (DOUBLE FOR & AT)  
VERTICAL: 42" 44" 35" FOR 2' 4" TO 3' 13" 30" AT ENDS & 44" N.E.S.

ON SPACER FLOORS: 3' 13" 30" 38" N.E.S. 44" N.E.S.  
30" IN HOLDS 38" N.E.S. & 44" N.E.S.

TOP ANGLE: 3' 13" 30" 38" N.E.S. 44" N.E.S. VERTICAL ANGLE: 42" 44" 35"  
BOTTOM ANGLE: 3' 13" 30" 38" N.E.S. 44" N.E.S. 44" N.E.S. 44" N.E.S.

WROUGHT ANGLE TO GUNWALL: 42" 44" 35" THROUGHOUT  
BOILER BRIDGE: 42" 44" 35" THROUGHOUT

SOLID GIRDER: 42" 44" 35" FOR 2' 4" TO 3' 13" 30" AT ENDS & 44" N.E.S.  
FRAMES ON SOLID FLOORS: 3' 13" 30" 38" N.E.S. 44" N.E.S. 44" N.E.S.

REV. FRS: 3' 13" 30" 38" N.E.S. 44" N.E.S. 44" N.E.S. 44" N.E.S.  
TWO SOLID BRIDGES: 35" N.E.S. & 44" N.E.S. SPACER: 44" N.E.S.

#### LISTING NOTE

SHELL PLATING: LINDINGS: 30" 44" SPACER OF 36" OR THROUGHOUT  
LINDINGS OF PROP. BRIDGE & FLOOR: 30" 44" SPACER OF 36" OR THROUGHOUT

WALL PLATE: BUTTS OVERLAPPED & 40" FOR 2' 4" TO 3' 13" 30" AT ENDS  
SUBSTANTIAL: 42" 44" 35" FOR 2' 4" TO 3' 13" 30" AT ENDS

SHELL PLATE: BUTTS OVERLAPPED & 40" FOR 2' 4" TO 3' 13" 30" AT ENDS  
PROP BRIDGE & FLOOR: 30" 44" SPACER OF 36" OR THROUGHOUT

DECK PLATING: LINDINGS: 30" 44" SPACER OF 36" OR THROUGHOUT  
MAIN DECK: 30" 44" SPACER OF 36" OR THROUGHOUT

PROP BRIDGE & FLOOR: 30" 44" SPACER OF 36" OR THROUGHOUT  
BUTTS OF SPACER DECK PLATING: 24"

MAIN DECK: 30" 44" SPACER OF 36" OR THROUGHOUT  
BUTTS OF SPACER DECK PLATING: 24"

MAIN DECK: 30" 44" SPACER OF 36" OR THROUGHOUT  
BUTTS OF SPACER DECK PLATING: 24"

MAIN DECK: 30" 44" SPACER OF 36" OR THROUGHOUT  
BUTTS OF SPACER DECK PLATING: 24"

MAIN DECK: 30" 44" SPACER OF 36" OR THROUGHOUT  
BUTTS OF SPACER DECK PLATING: 24"

MAIN DECK: 30" 44" SPACER OF 36" OR THROUGHOUT  
BUTTS OF SPACER DECK PLATING: 24"

MAIN DECK: 30" 44" SPACER OF 36" OR THROUGHOUT  
BUTTS OF SPACER DECK PLATING: 24"

MAIN DECK: 30" 44" SPACER OF 36" OR THROUGHOUT  
BUTTS OF SPACER DECK PLATING: 24"

MAIN DECK: 30" 44" SPACER OF 36" OR THROUGHOUT  
BUTTS OF SPACER DECK PLATING: 24"

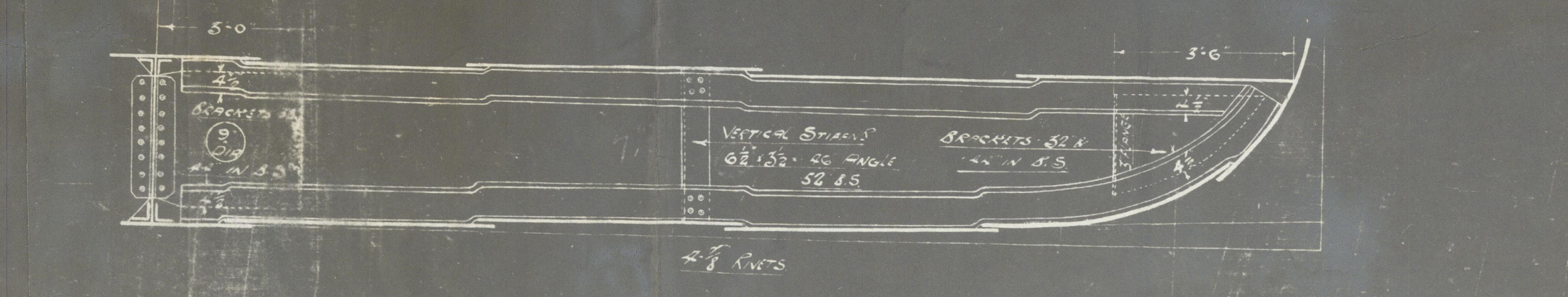
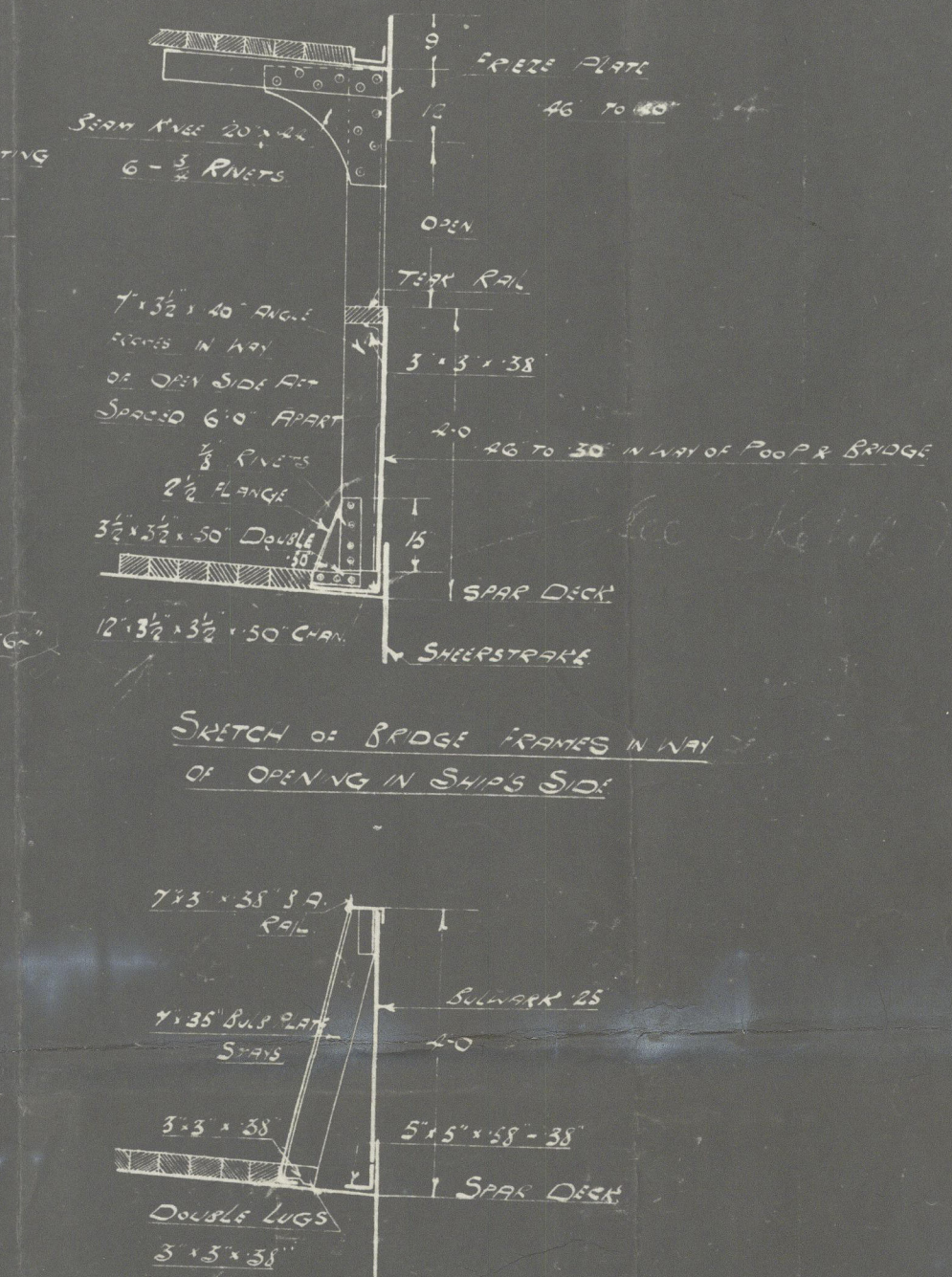
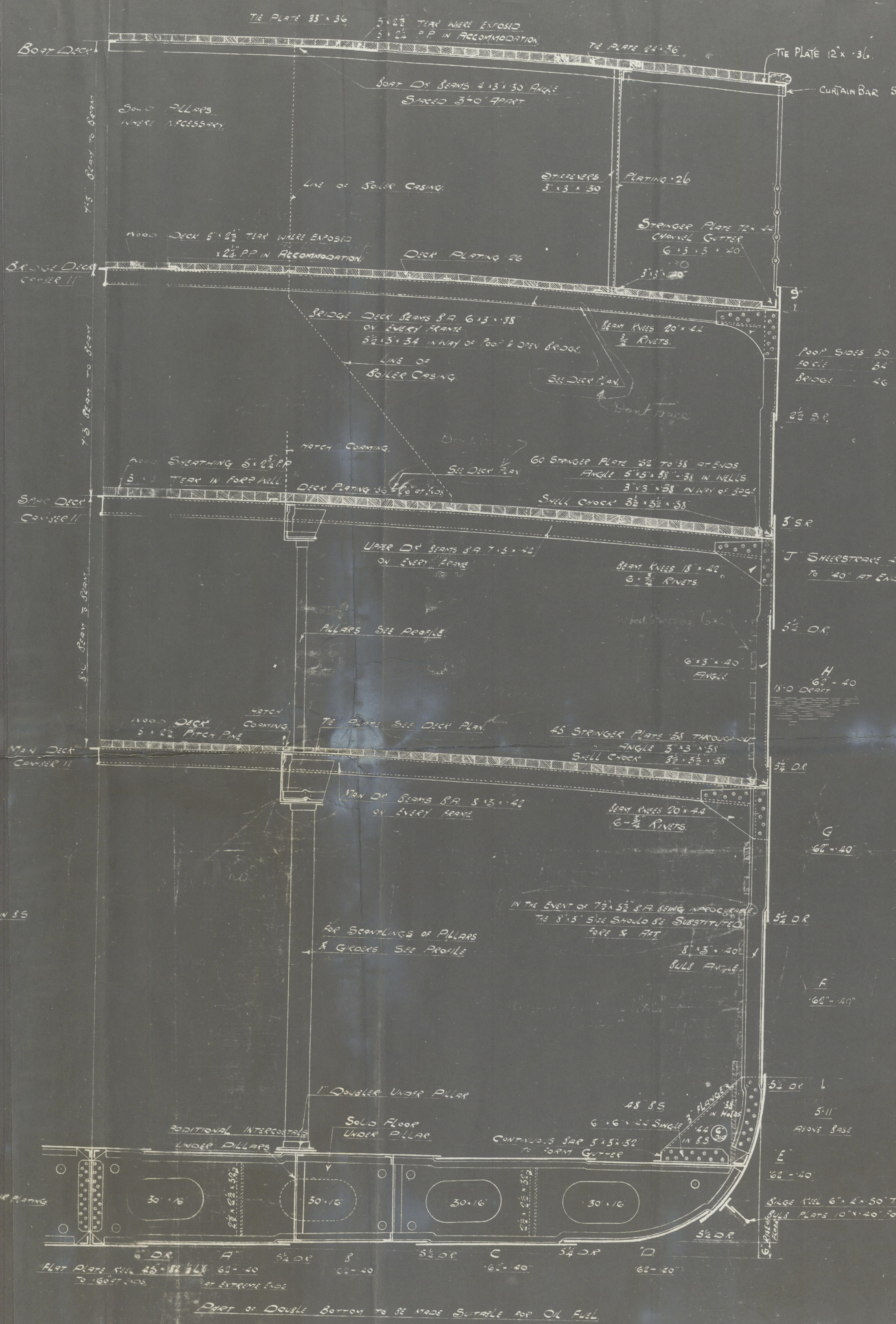
MAIN DECK: 30" 44" SPACER OF 36" OR THROUGHOUT  
BUTTS OF SPACER DECK PLATING: 24"

MAIN DECK: 30" 44" SPACER OF 36" OR THROUGHOUT  
BUTTS OF SPACER DECK PLATING: 24"

MAIN DECK: 30" 44" SPACER OF 36" OR THROUGHOUT  
BUTTS OF SPACER DECK PLATING: 24"

MAIN DECK: 30" 44" SPACER OF 36" OR THROUGHOUT  
BUTTS OF SPACER DECK PLATING: 24"

MAIN DECK: 30" 44" SPACER OF 36" OR THROUGHOUT  
BUTTS OF SPACER DECK PLATING: 24"



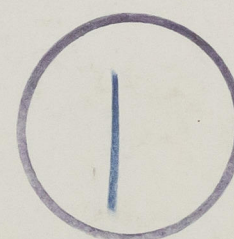
SECTION IN WAY OF BRACKET FLOOR  
POSITION AS SHOWN ON PROFILE



"KILWA" \* "KIUNGCHOW"

Midship section

Born. Rpt. No. 8476



Midship Section

002094-002100-0302



© 2020

Lloyd's Register  
Foundation