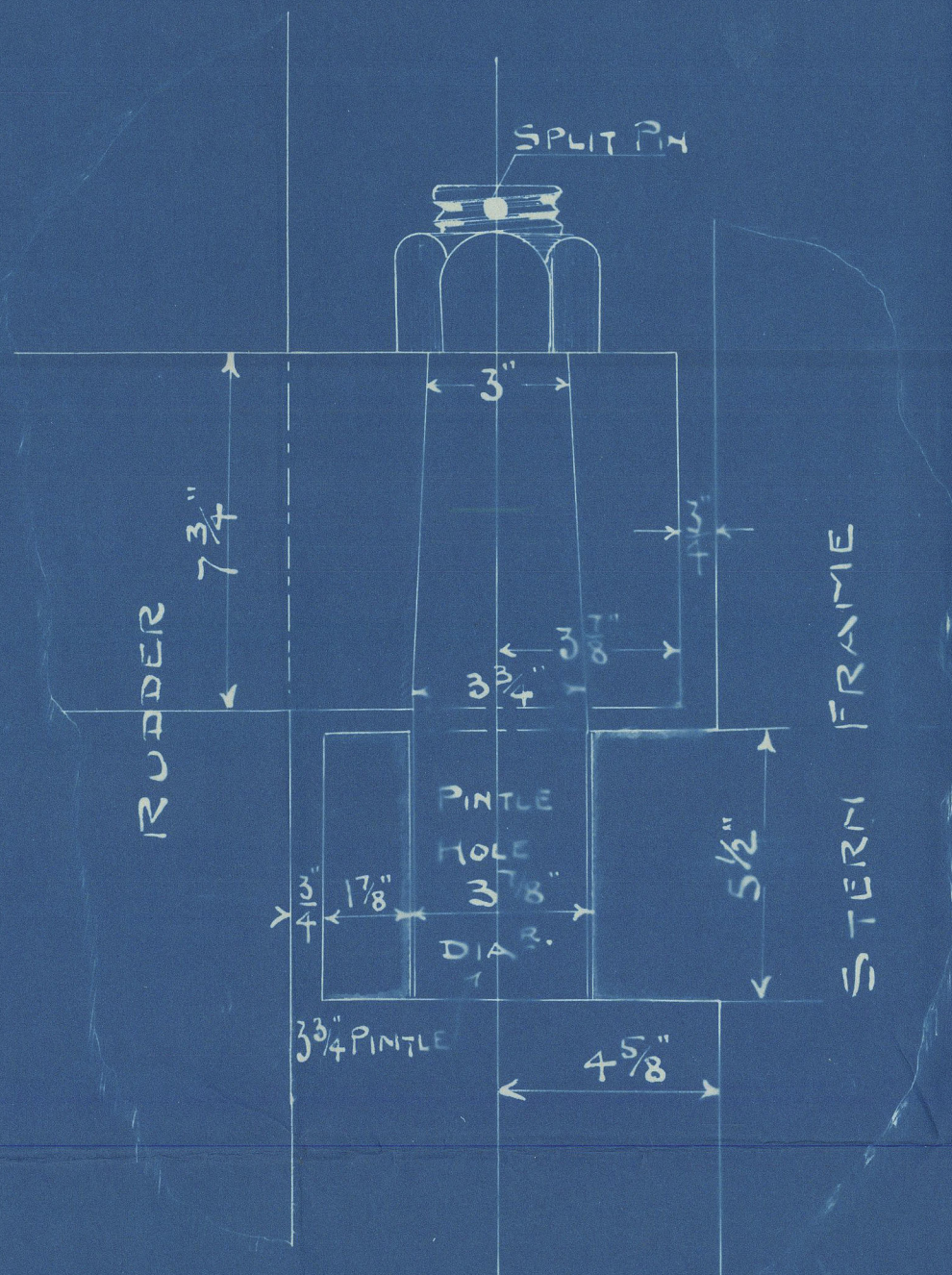
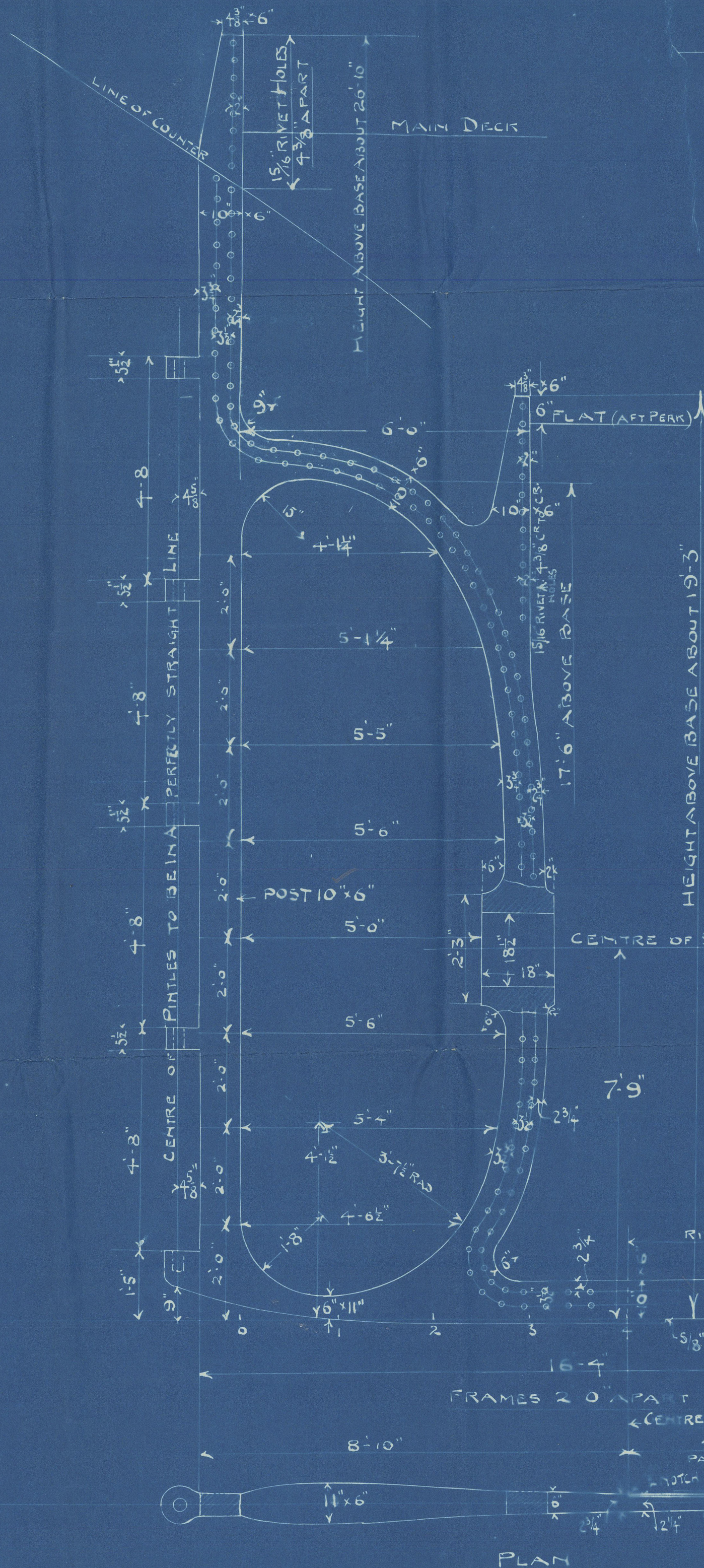


11/2

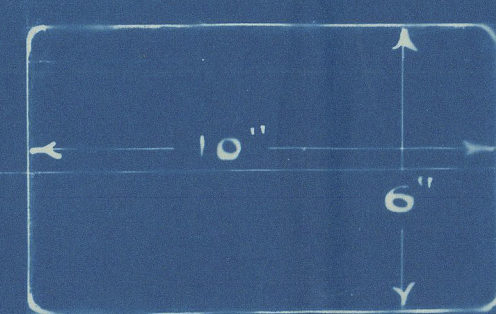
STERNPOST S.S. No 255

SCALE $\frac{1}{2}$ " = 1 FOOT.

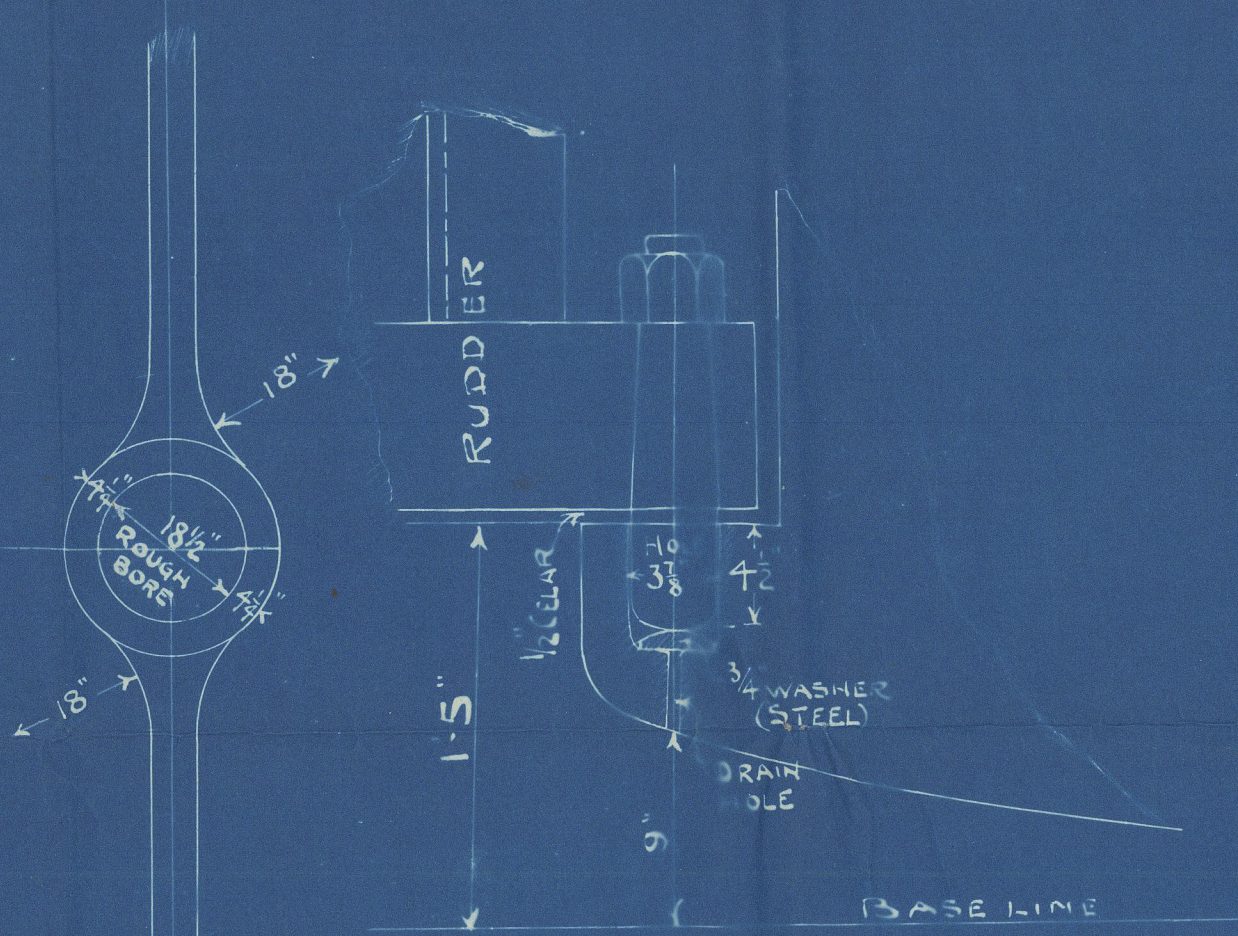
Plating No. 23994



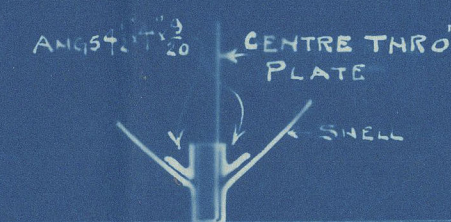
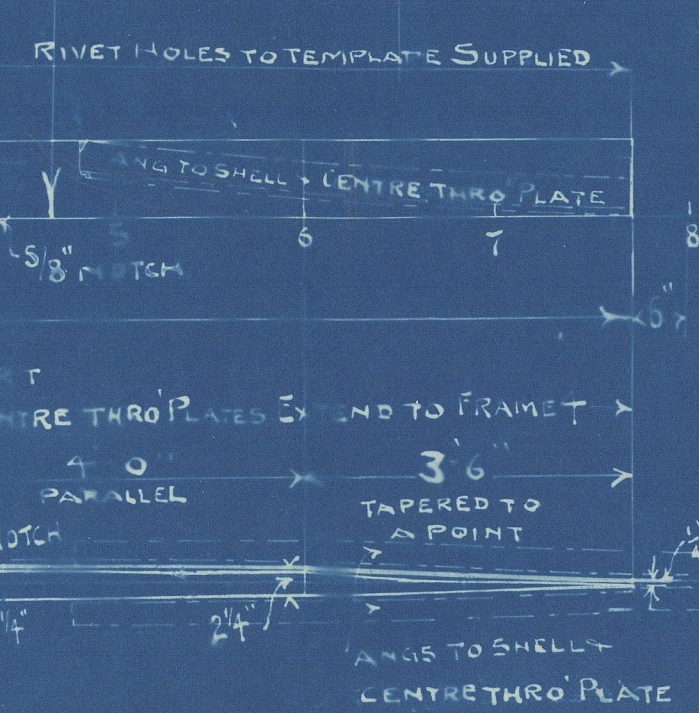
DETAILS OF
GUDDONS
SCALE 3" = 1 FT.



SECTION OF POST
SCALE 3" = 1 FT.



SKETCH OF BOTTOM
GUDDON
SCALE 1 1/2" = 1 FT.



SECTION SHOWING
CONNECTION TO SHELL ETC.

THE CLYDE SHIPBUILDING & ENGINEERING CO
ENGINEERS & ARCHITECTS
8 DEC 1902
REPAIRING DOCK
PORT GLASGOW

Trading No. 111 998

Plan of Sternpost.

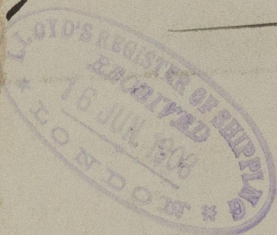
Clyde SBT Eng. Co^y

N^o 255.

~~25~~

S.S. *Hermia*

Grk report N^o 136HS-



© 2020

Lloyd's Register

002094-002100-0189 2/2