

22 AUG 1950

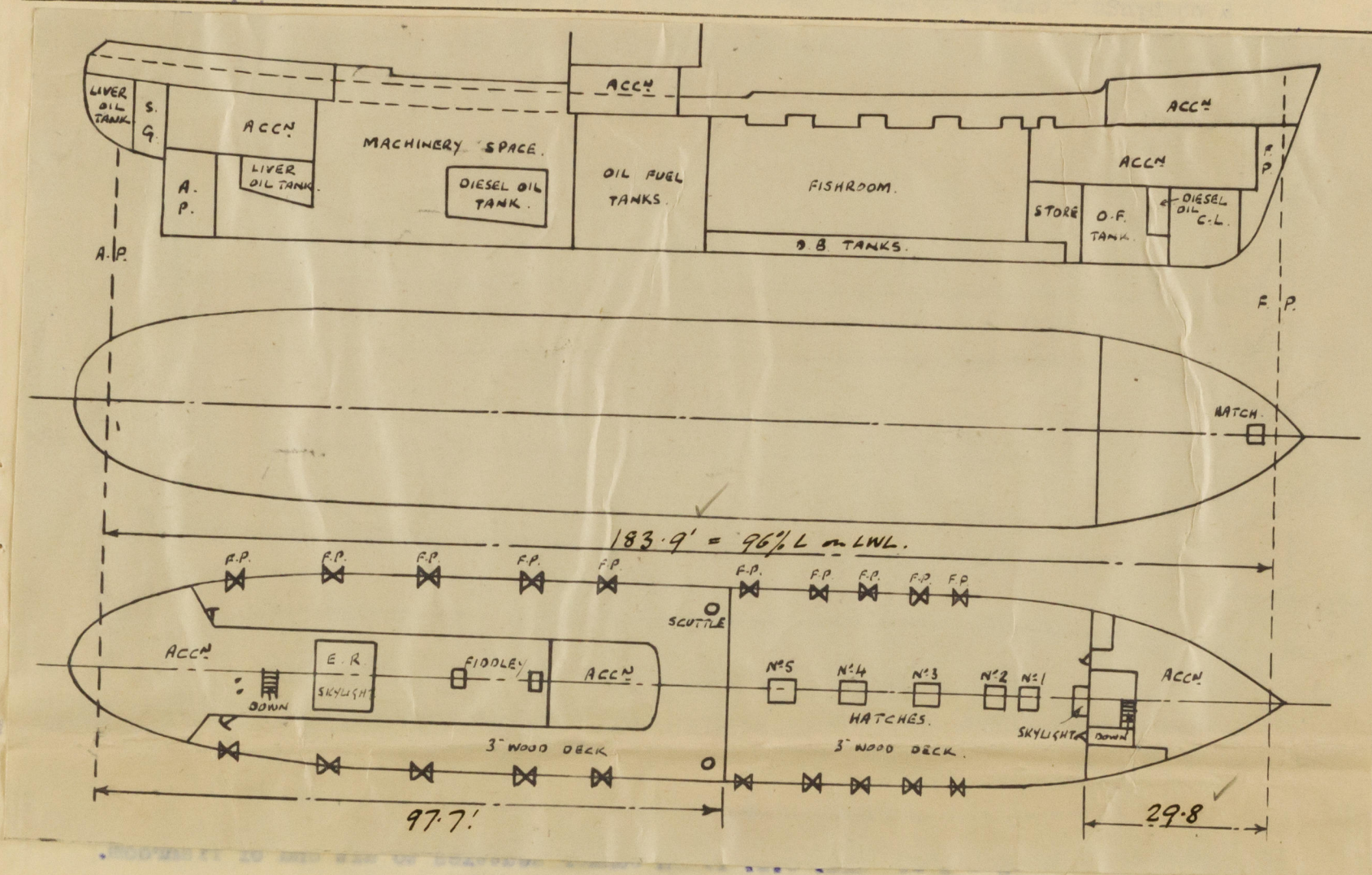
Lloyd's Register of Shipping.

SURVEYS FOR FREEBOARD.

(CONDITIONS OF ASSIGNMENT.)

Index No. 42447
(For London Office only.)Rpt. N° 22953Ship's Name "DROFN"Port of Survey Aberdeen

Official Number

Surveyor's Signature G. A. WilsonNationality and Port of Registry Islandic. Not yet availableDate of Survey While building.

Particulars of Superstructures, Trunks, Casings, Deckhouses.

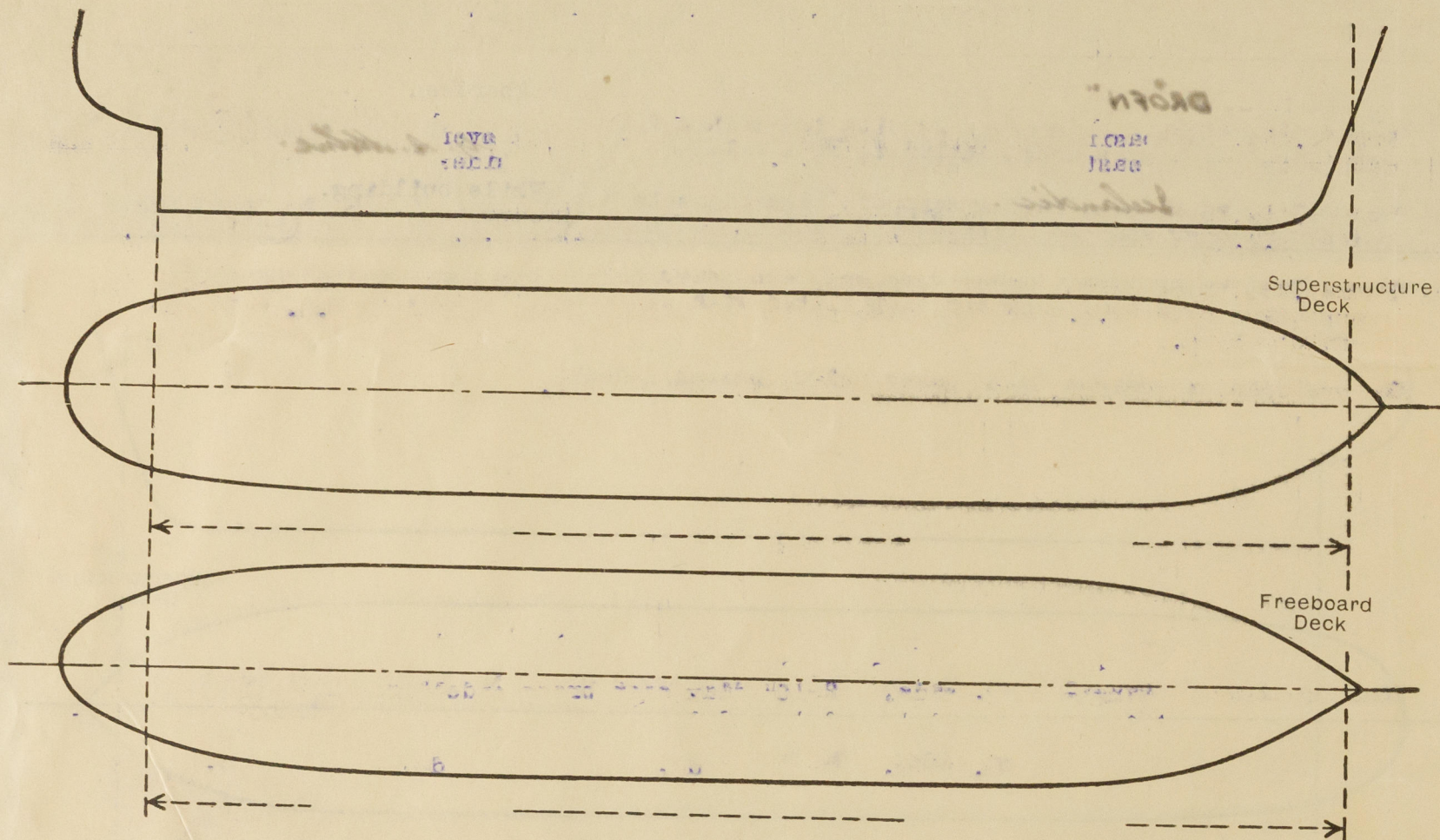
	Coaming	Plating	Stiffeners	Spacing	End Attachments of Stiffeners	Size of Openings	Height of Sills	Height of Casings
Poop Bulkhead25	.25	3" flange	36"	None	4'-9" x 2'-0"	18"	7'-0"
Raised Quarter Deck Bulkhead40	-	-	-	-	None	-	1'-0"
Bridge, After Bulkhead ...	-	-	-	-	-	-	-	-
Bridge, Forward Bulkhead ...	-	-	-	-	-	-	-	-
Forecastle Bulkhead...	.26	.26	3" flange 6x3x.30	30"	None	5'-4"x2'-1" 5'-3"x2'-9"	15"	8'-0"
Trunk, Forward ...	-	-	-	-	-	-	-	-
Exposed Machinery Casings on Freeboard or Raised Quarter Decks...	.30	.30	3 1/2 x 2 1/2 x .30 4 x 3 x .30	28"-39"	Bkt at top	4'-9"x2'-0"	18"	7' 0 to 5' 0
Exposed Machinery Casings on Superstructure Decks ...	-	-	-	-	-	-	-	-
Machinery Casings within Superstructure ...	-	-	-	-	-	-	-	-
Deckhouses on Main Deck Ship ...	-	-	-	-	-	-	-	-

Particulars of Closing Appliances (state if capable of being manipulated from both sides).

Poop Bulkhead ...	P. side..	Steel watertight door .25" thick capable of being manipulated from both sides.
Raised Quarter Deck Bulkhead ...	-	-
Bridge, After Bulkhead ...	-	-
Bridge, Forward Bulkhead ...	-	-
Forecastle Bulkhead...	-	-
Exposed Machinery Casings on Freeboard or Raised Quarter Decks...	-	-
Exposed Machinery Casings on Superstructure Decks ...	-	-
Machinery Casings within Superstructure ...	-	-
Deckhouses on Main Deck Ship ...	-	-

PARTICULARS OF PROTECTION TO OPENINGS, ETC.

The following diagrams should be used to indicate the positions of cargo and coaling hatchways, gangway, cargo and coaling ports, ventilators, companionways, etc., which would affect the seaworthiness of the ship :—



Particulars of hiddley, funnel and ventilator coamings, engine room skylight and other openings in machinery casing tops and their means of closing :

Fiddley, funnel, vent coamings & E.R. skylight of steel efficiently constructed.

Fiddleys closed by hinged W.T. steel plate covers.

Engine room skylight openings closed by hinged steel covers.

Particulars of Flush Bunker Scuttles :- 2 - 1'-9" dia. C.L. flush bunker scuttles to aft end of fireroom.

Lids secured by screwed joint and attached to structure by chain.

Particulars of Companionways:—

Entrance to crew's acen. on lower deck fwd from steel companionway situated within foole. Companionway opening closed by hinged wood doors capable of being manipulated from both sides. Sill 18" high. Door 1 1/2" thick.

Entrance to crew's acen. on lower deck aft from within aft deckhouse. Opening in aft deckhouse closed by W. T. door of steel, 25" thick capable of being manipulated from both sides. Sill 18" high.

Particulars of Ventilators in exposed positions on freeboard and superstructure decks :-

On fore deck:- 5 - 5" dia. G.N. vents to W.C.'s washplaces etc. coamings 1'-6" high of efficient construction.
1-14 1/2" dia. French type vents coaming 30" high x .38 thick.
1-13" " " " " " 30" high x .36 "
1-9" " " " " " 30" high x .36 "
On upper deck:- 2 - 5" dia. G.N. vents coamings 36" high of efficient construction.
On poop deck:- 1-14 1/2" dia. French type vent coamings 22 1/2" high x .36" thick.
1-13" " " " " " " " "
1-12" " " " " " " " "
5 - 5" " G. N. vents coaming 18" high of efficient construction.
3 -5" " M.V. coaming 6" high.

M.V.'s closed by permanently attached W.T. screw covers.
G.N.V.'s " " wood plugs & canvas covers. French type vents closed by canvas covers.

Particulars of Air Pipes in exposed positions on freeboard, raised quarter, or superstructure decks:—

Particulars of Air Pipes in exposed position on freeboard, raised quarter, or superstructure decks :-			Air pipes closed by ball valve at opening
On fore deck:-	1-2 $\frac{1}{2}$ " dia.	air pipe to fore peak 1'-6" above fore deck.	Air pipes to O.F. & diesel oil tanks fitted with gauze.
	2-3" "	air pipe to ford. O. F. tank 1'-6" above fore deck.	
	1-2" dia.	air pipe to ford diesel Tank 1'-6" above fore deck.	
On upper deck:-	2-3" dia.	air pipe to ford cofferdam 3'-0" above upper deck.	efficiently supported.
	10-2 $\frac{1}{2}$ " dia.	air pipe to D. B. tanks 3'-0" above upper deck.	
	2-2" dia.	air pipe to aft cofferdam 2'-6" above R.Q. deck.	
On R. Q. deck:-	2-2" "	air space ford. O.F. tank 2'-6" above R.Q. deck.	
	5-4" dia.	air pipe to O.F. Tanks 7'-0" above R.Q. deck.	
	2-2 $\frac{1}{2}$ " dia.	air pipe to diesel oil tanks 5'-0" above R.Q. deck.	
	3-2" dia.	air pipe to liver oil tanks 3'-0" above R.Q. deck.	
	1-2" dia.	air pipe to aft liver oil tank 1'-6" above poop deck.	

Particulars of Gangway Cargo and Coaling Ports :—

N o n e

Particulars of Scuppers and Sanitary Discharge Pipes :—

From W.C&s, washbasins & scuppers situated within fore led overboard below upper deck and each fitted with cast brass automatic N.R. valve on snip's side.

From W.C.'s, washbasin, bath & scuppers situated within bridge deckhouse led overboard below R/Q. deck and each fitted with cast brass automatic N.R. valve on ship's side. ✓

From W.CBs, washbasins, sinks, scuppers, etc. situated within poop & aft deckhouse, led overboard below R/Q. Deck and each fitted with cast brass automatic N.R. valve on snip's side. ✓

No overboard discharges from spaces below freeboard deck.

Particulars of Side Scuttles :—

On poop side plating:-

P. side.	2-10"	dia. cast brass sidelights with hinged cast brass deadlights.	✓
S. side.	2- 8"	do. do. do.	✓

Vertical distance of Sill of lowest Side Scuttle above top of keel.

Particulars of Guard Rails :—

On upper & R.Q. Decks:—	Steel bulwarks efficiently constructed & stayed 5'10" high at upper deck. 3'-6" high at R.Q. deck.
On fore deck:—	Open rails and stanchions 3'-5" high. Stanchions 1½" dia. spaced 4'6" apart. Top rail 1" dia. tube. Lower rails ½" dia.
On poop deck:—	Open rails & stanchions 3'-3" high. Stanchions 1½" dia. spaced 4'-6" apart. Top rail 1" dia. tube. Lower rail ½" dia.

Particulars of Gangways, Lifelines, etc. :—

Stern rails on casing sides.

Particulars of Freeing Arrangements.						
	Length of Bulwark	Height of Bulwark	Size of Freeing Ports	Number each side	Area each side	Rule area each side
After Well	86' - 2"	3' - 6"	2' - 2" x 1' - 2"	5	12.63	14.59
Forward Well	56' - 4"	5' - 10 1/2"	1' - 3" x 6" 2' - 2" x 1' - 2"	1 4	10.79	12.13

State position of each freeing port ... { After Well:—From A.P. 16'-0, 33'-3, 50'-6", 64'-0, 79'-6". 8½" above steel.
(F. and A. position and height above deck edge) { Forward Well:—From break 1'-9, 13'-0, 20'-9, 27'-9, 34'-9". 3½" above steel.

State whether the freeing ports are fitted with shutters, bars, or rails, and give particulars of such —

State whether the freeing ports are fitted with shutters, bars, or rails, and give particulars of such:—
Additional area, where there is less than 100 sq. ft. by $\frac{3}{4}$ " dia. rods.

Additional area where sheer is less than standard.

Freeing ports on upper deck closed by $\frac{3}{4}$ " dia. horizontal bar and vertical sliding plate shutters except freeing port 1'-9" fwd of break which is closed by vertical sliding grill.

PARTICULARS OF PROTECTION TO OPENINGS, ETC.

HATCHWAYS ON FREEBOARD AND SUPERSTRUCTURE DECKS.							
Description of Hatchway	No. 1	No. 2	No. 3	No. 4	No. 5	No. 6	Focle deck
Dimensions of Hatchway	3'9"x3'9"	3'9"x3'9"	5'0"x3'9"	5'0"x3'9"	6'6"x3'9"		2'3"x2'3"
COAMINGS	as for No. 1 hatch						
Height above Deck	1'-9"						9"
Thickness { Sides } { Ends }	.30						.40
Stiffeners	None						None
Brackets, Stays	None						None
HATCH BEAMS							
Number							
Spacing							
Scantling and Sketch							
Bearing Surface							
FORE AND AFTERS							
Number							
Spacing							
Unsupported Lengths							
Scantling and Sketch							
Bearing Surface							
HATCH COVERS							
Material	W. pine	W. pine	STEEL	STEEL	STEEL		STEEL
Thickness	3"	3"	.25"	.25"	.25"		.30"
How fitted	Thwarts	Thwarts	Jointed	Jointed	Jointed		Jointed
Bearing Surface	3"	3"	W.T.	W.T.	W.T.		W.T.
Spacing of Cleats	2'0"	2'0"	-	-	-		-
Number of Tarpaulins	2	2	-	-	-		-
*Are wood fore and afters steel shod at all bearing surfaces? <input type="checkbox"/> - Are battens and wedges efficient and in good condition? <input checked="" type="checkbox"/> Yes Are tarpaulins in good condition and in accordance with rule requirements? <input checked="" type="checkbox"/> Yes Are lashings provided in accordance with rule requirements? <input type="checkbox"/> -							

Particulars of any special features:—

Skylight on upper deck fwd. to focle acen. Dimensions 2'-3" x 2'-9"
Height 1'-9" to 2'-3" above wood deck, efficiently constructed of steel .26 thick
on sides, end and top. 10" dia. C.B. lights on sides and ends, 16" dia. C.B.
light on top of efficient construction. No deadlights.
Glasses of substantial thickness.

Particulars of displacement &c. received from Builders:—

Mean Mld. draft	Mld. displ.	Ext. Displ.	Tons per inch
13' - 0	1144 tons	1154 tons	10.0
14' - 0	1266	1278	10.26
15' - 0	1392	1404	10.5

Particulars given herewith are as proposed and completion of same will be advised
with verification of marking form.

all items now completed (see above letter 21/6/51)



© 2020

Lloyd's Register
Foundation