

Copy of Lloyd's Approved
#29-1-19

42' 68" x 55' 69" BATH x 31' 31" MLD. TO UPPER DK

Copy of Lloyd's Approved

MIDSHIP SECTION

Nº 345

TO CLASS 100 A.I. AT LLOYD'S

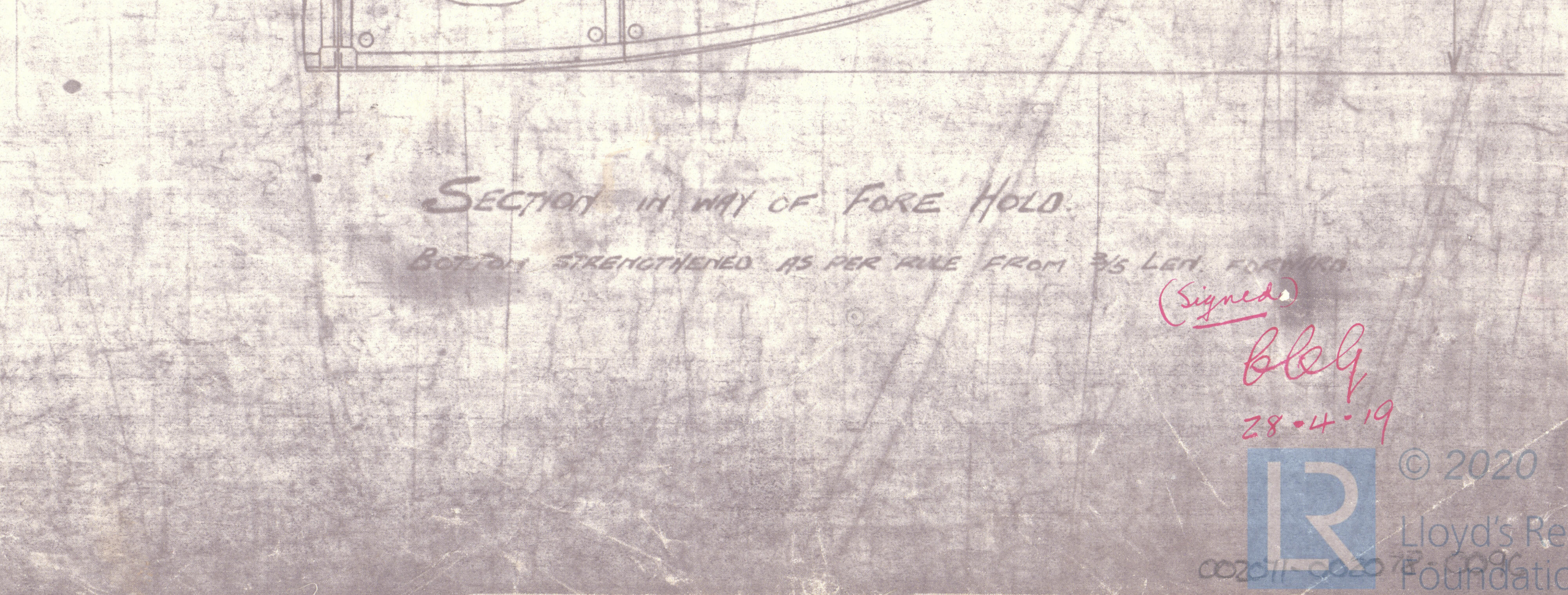
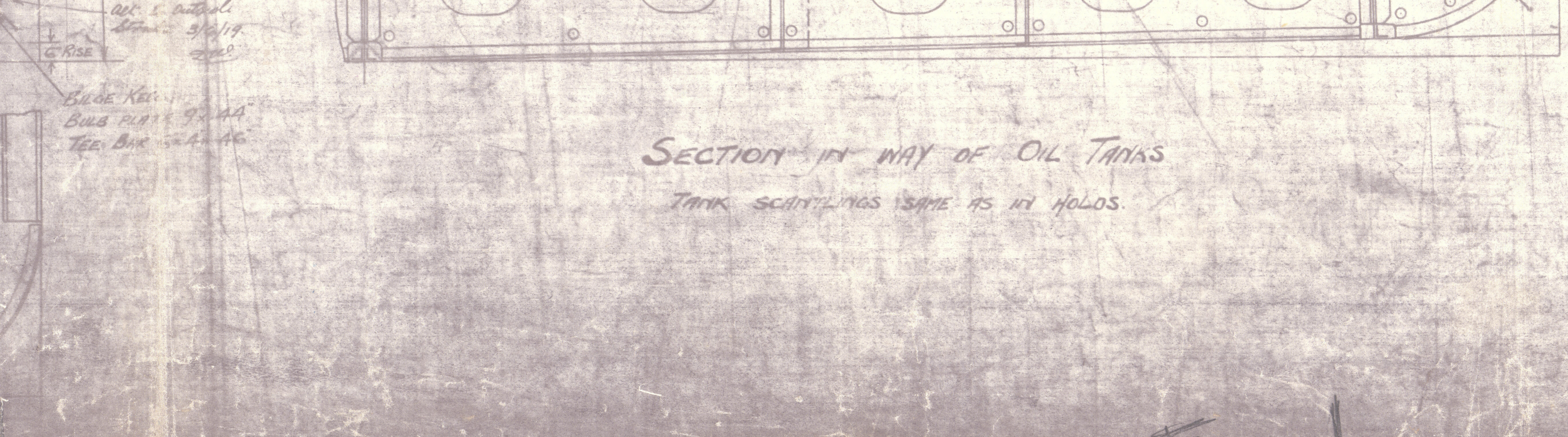
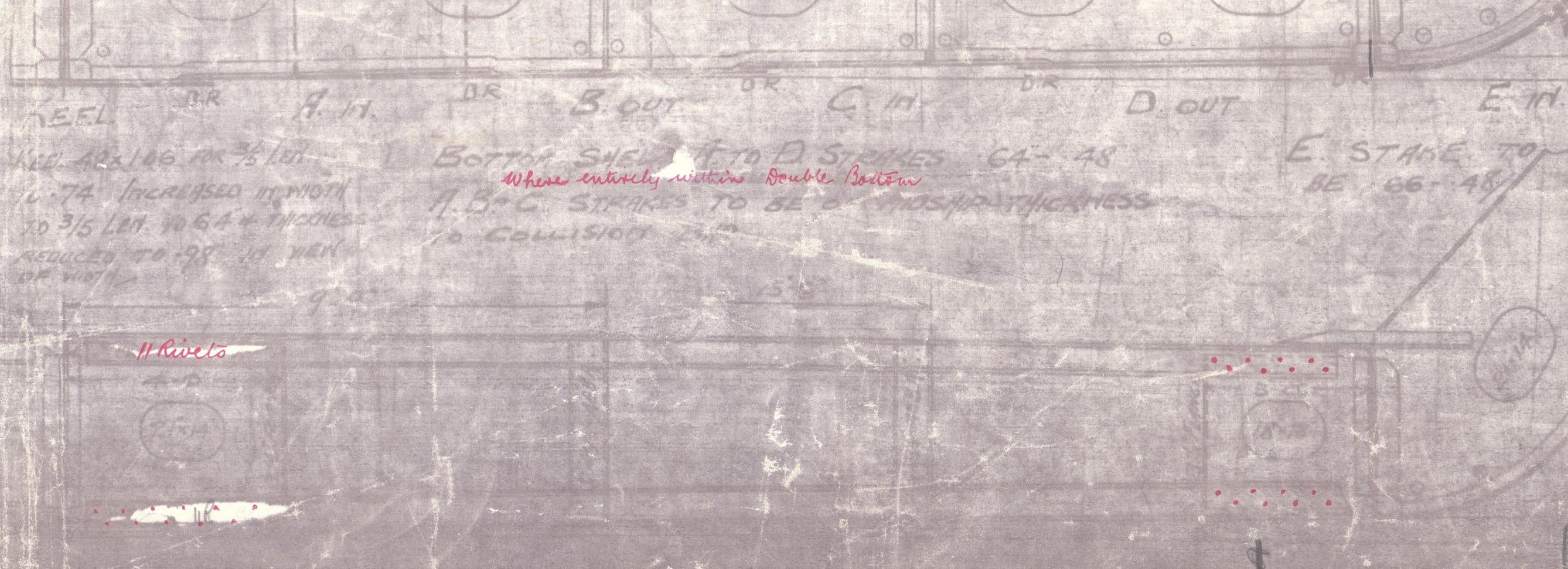
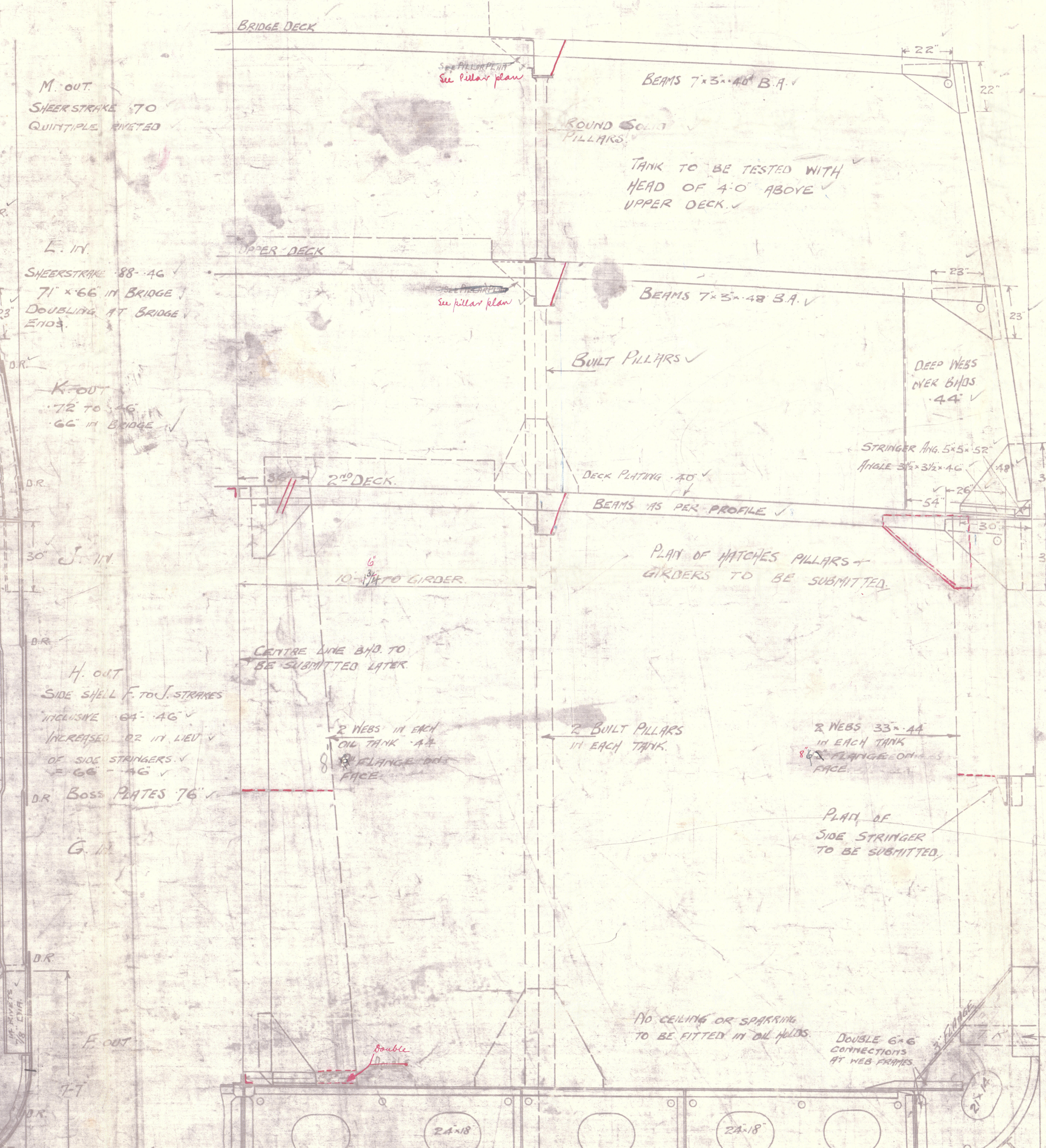
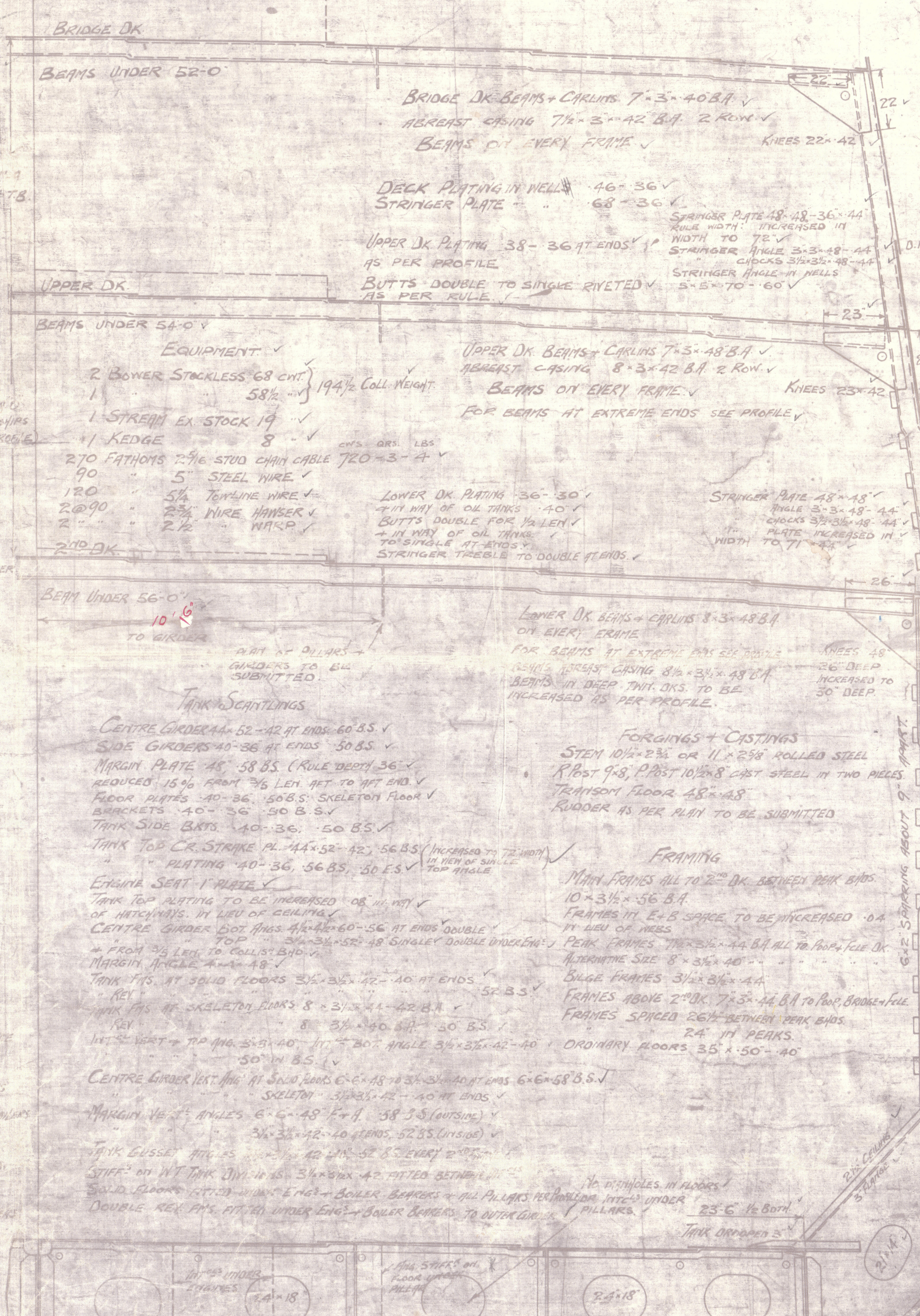
DIMS. 423' 6" B.P. x 56' 0" EXT. x 31' 3" MLD. TO UPPER DK

SCALE 1/2" INCH = 1 FOOT



POOP & FELE SCANTLINGS

POOP DK BEAMS ON ALT. FAS 9' 3/4" x 50 B.A. AS PER PROFILE (1 ROW PILLARS) KNEES 24" x 50"
FELE 11' 3 1/2" x 56 B.A.
POOP SIDE PLATING 40" STR. ANG. 3 1/2" x 36" STEEL DK. 30" x 2 1/2" PITCH PLATE V
FELE 42' 34' V



SECTION IN WAY OF OIL TANKS

TANK SCANTLINGS SAME AS IN HOLDS.

SECTION IN WAY OF FORE HOLD

BOTTOM STRENGTHENED AS PER RULE FROM 36 LBS. PER SQ. INCH

38.11.19



Midship Section.

Messrs Robt Duncan & Co^{rs}

N.M. JARAMA

No. 345

EX

MAFUTA

EX

S.S. "Ronald"

Greenock Apts. No. 17681

Certified copy of approved
plan.
N.M.



© 2020

Lloyd's Register
Foundation

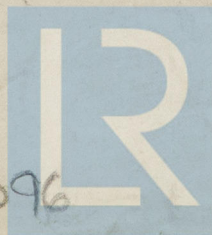
Copy of Lloyd's approved

Midships Section

S.S. N^o 345

Ronald ⁹ Mafuta
EX

002071-002078-0096



© 2020

Lloyd's Register
Foundation