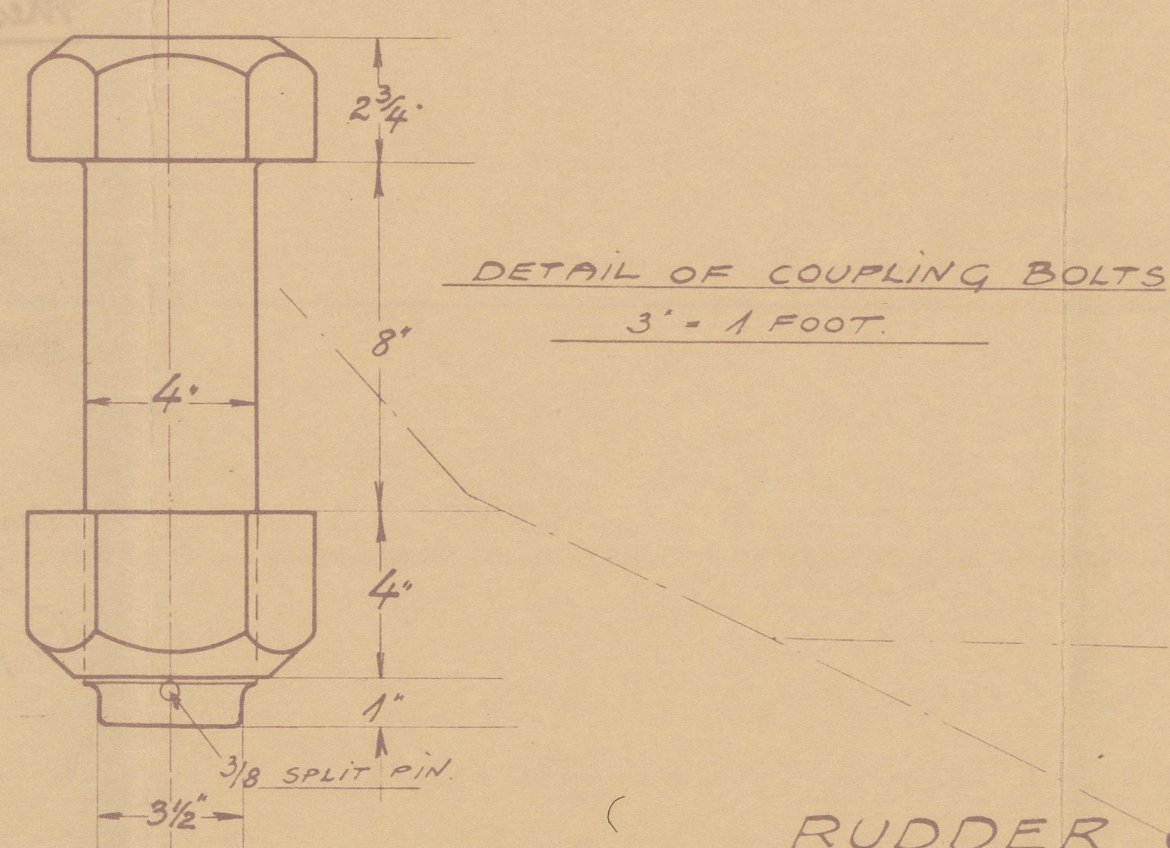


29.12.26



RUDDER COUPLING 3\"/>

RUDDER POST LOOKING AFT.

TOP OF RUDDER POST LOOKING AFT.

DETAIL OF KEY FULL SIZE.

POORDECK.

SHIP No 32

STERNPOST AND RUDDER

SCALE 3/4\"/>

MATERIAL

STERNPOST OF CAST STEEL.
RUDDER HEAD AND MAIN PIECE OF FORGED STEEL.
ARMS OF FORGED STEEL SHRUNK ON AND KEYS TO MAIN PIECE.
PINNLES OF STEEL WITH METAL BUSHES.
LLOYD'S CERTIFICATE TO BE DELIVERED.
SPEED OF VESSEL 11 KNOTS.
A.D. 854.

THIR OF STEERING GEAR.

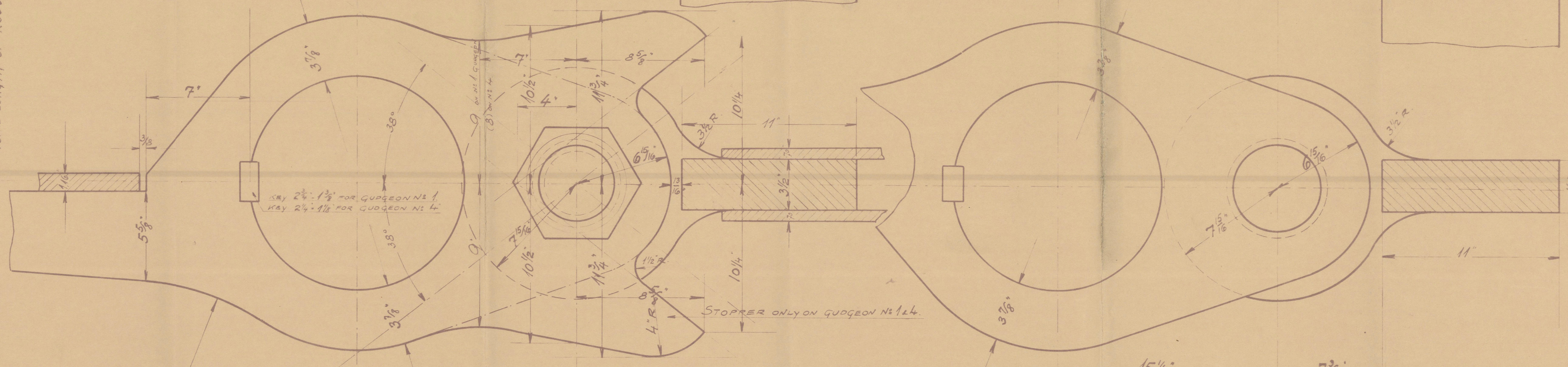
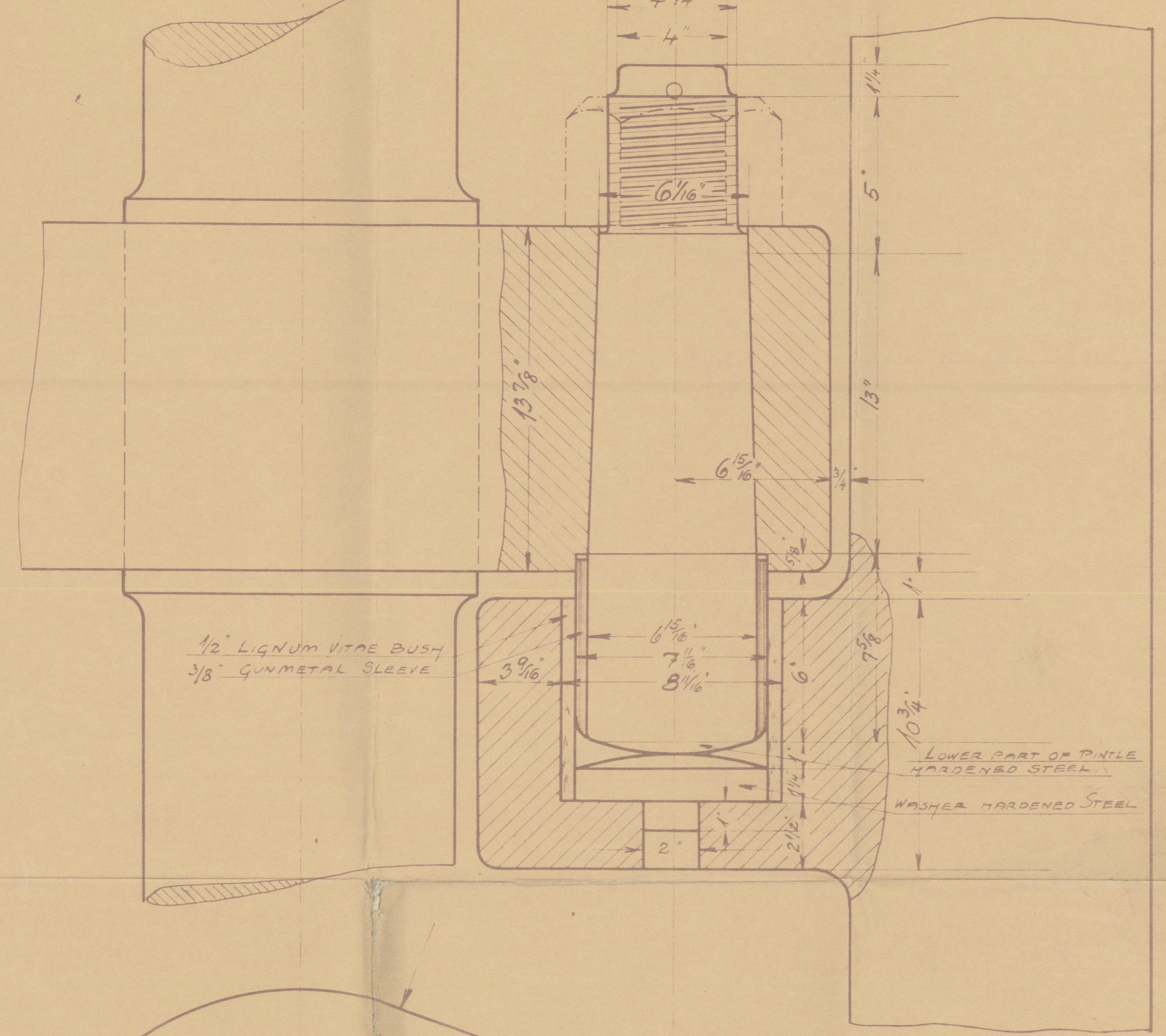
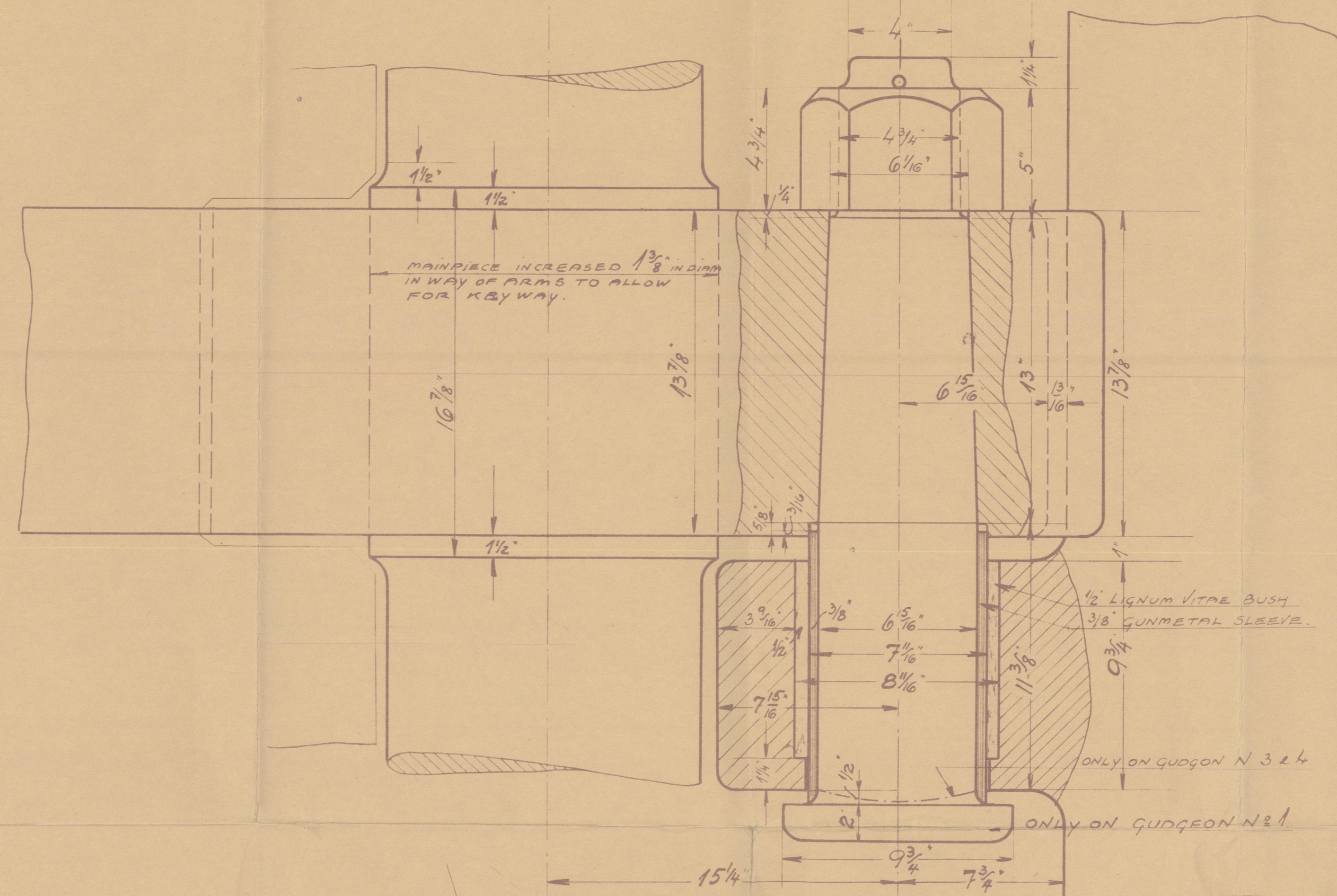
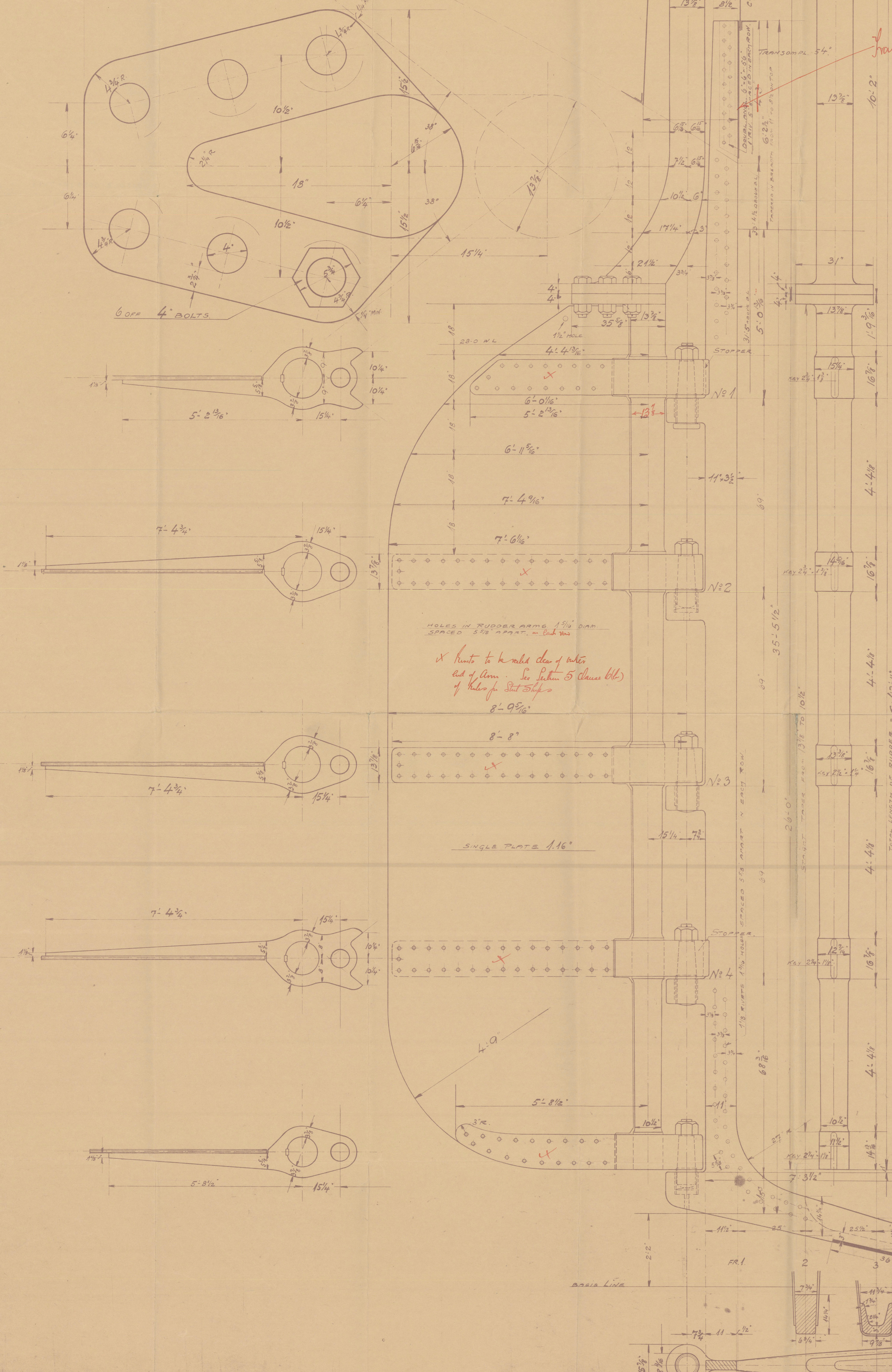
UPPER DECK.

GUDGEON No 1, 3 & 4

SCALE 3\"/>

GUDGEON No 2

SCALE 3\"/>



FOOT GUDGEON

SCALE 3\"/>

bbk.
29.12.26

THIS DRAWING ARE NOT
CORRECT TO SCALE.

ARTISERENSKA
NAKSKOV SKIBSVERFT
P. BOCK

NAKSKOV SKIBSVERFT
SHIP No 32

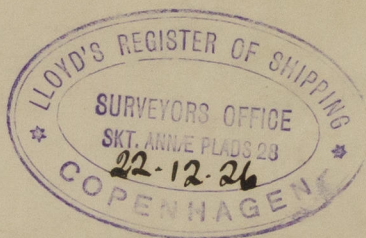
STERNPOST AND RUDDER

3/4\"/>

Stempost and Rudder

Yard No 32

Messrs A/s Nakskov Skibsværft



m/s Hilda Knudsen
Gpr. Rpt. No. 7781.



© 2020

Lloyd's Register
Foundation

002062-002070-0065