

AUXILIARY REPORT ON OIL ENGINE MACHINERY.

No. 7781.

Received at London Office.

7 - AUG 1928

4b

Writing Report

25/7 1928 When handed in at Local Office

19 Port of

Copenhagen

Survey held at Helsingør & Nakskov

Date, First Survey

20/7 27

Last Survey

14/7

1928

Number of Visits

14

on the ^{Single} ^{Twin} ^{Triple} ^{Quadruple} Motor Screw vessel "HILDA KNUDSEN"

Tons { Gross 9177.78
Net 5481.66

at Nakskov

By whom built 9/3 Nakskov Skibsværft

Yard No. 32. When built 1928.

made at Helsingør

By whom made 9/3 Helsingør Dieselmotor Fabrik

Engines No. 2335 When made 1927.

Boilers made at Aarhus

By whom made 9/3 Frichs

Boilers No. 24-5 When made 1927-8.

Horse Power 2850

Owners Knut Knutsen

Port belonging to Helsingør

Horse Power as per Rule

690 7/4 Is Refrigerating Machinery fitted for cargo purposes

No Is Electric Light fitted yes.

for which vessel is intended Ocean Trade, carrying petroleum in bulk.

ENGINES, &c. Type of Engines Vertical Diesel, trunk type 2 or 4 stroke cycle 4 Single or double acting single

um pressure in cylinders 35 kg/cm² Diameter of cylinders 310 mm Length of stroke 350 mm No. of cylinders 2 No. of cranks 1/2

bearings, adjacent to the Crank, measured from inner edge to inner edge 360 mm Is there a bearing between each crank yes.

tions per minute 400 Flywheel dia. 1200 mm Weight 2500 kg Means of ignition compression Kind of fuel used ord. Diesel oil.

Shaft, dia. of journals as per Rule 161.5 mm Crank pin dia. 162 mm Crank Webs Mid. length breadth 300 mm Thickness parallel to axis shrunk

as fitted 162 mm Mid. length thickness 95 mm Thickness around eyehole

Intermediate Shafts, diameter as per Rule as fitted Thrust Shaft, diameter at collars as per Rule as fitted

Shaft, diameter as per Rule as fitted Screw Shaft, diameter as per Rule as fitted Is the tube screw shaft fitted with a continuous liner

ze Liners thickness in way of bushes as per Rule as fitted Thickness between bushes as fitted Is the after end of the liner made watertight in the

ler boss If the liner is in more than one length are the junctions made by fusion through the whole thickness of the liner

liner does not fit tightly at the part between the bearings in the stern tube, is the space charged with a plastic material insoluble in water and non-corrosive

o liners are fitted, is the shaft lapped or protected between the liners Is an approved Oil Gland or other appliance fitted at the after

Length of Bearing in Stern Bush next to and supporting propeller

eller, dia. Pitch No. of blades Material whether Moveable Total Developed Surface sq. feet

od of reversing Engines Is a governor or other arrangement fitted to prevent racing of the engine when declutched Means of lubrication

Thickness of cylinder liners Are the cylinders fitted with safety valves Are the exhaust pipes and silencers water cooled or lagged with

conducting material If the exhaust is led overboard near the waterline, what means are arranged to prevent water from being syphoned back to the engine

ing Water Pumps, No. Is the sea suction provided with an efficient strainer which can be cleared within the vessel

e Pumps worked from the Main Engines, No. Diameter Stroke Can one be overhauled while the other is at work

ps connected to the Main Bilge Line No. and Size How driven

ast Pumps, No. and size Lubricating Oil Pumps, including Spare Pump, No. and size

two independent means arranged for circulating water through the Oil Cooler Suctions, connected to both Main Bilge Pumps and Auxiliary Bilge

ps, No. and size:—In Machinery Spaces

olds, &c.

pendent Power Pump Direct Suctions to the Engine Room Bilges, No. and size

all the Bilge Suction pipes in Holds and Tunnel Well fitted with strum-boxes. Are the Bilge Suctions in the Machinery Spaces

from easily accessible mud-boxes, placed above the level of the working floor, with straight tail pipes to the bilges

all Sea Connections fitted direct on the skin of the ship. Are they fitted with Valves or Cocks.

they fixed sufficiently high on the ship's side to be seen without lifting the platform plates. Are the Overboard Discharges above or below the deep water line

they each fitted with a Discharge Valve always accessible on the plating of the vessel. Are the Blow Off Cocks fitted with a spigot and brass covering plate

at pipes pass through the bunkers. How are they protected.

at pipes pass through the deep tanks. Have they been tested as per Rule

all Pipes, Cocks, Valves, and Pumps in connection with the machinery and all boiler mountings accessible at all times

he arrangement of valves and their connections such as to prevent the possibility of water passing from the sea or from water tanks into the cargo or machinery spaces, or from one

partment to another. Is the Shaft Tunnel watertight. Is it fitted with a watertight door. worked from

u wood vessel, what means are provided to prevent leakage of either fuel oil or of lubricating oil from saturating the woodwork

in Air Compressors, No. No. of stages Diameters a b c Stroke Driven by

uxiliary Air Compressors, No. { 2 No. of stages { 3 Diameters { 225 - 68 mm Stroke { 220 mm Driven by 1-CYL. DIESEL ENGINE.

all Auxiliary Air Compressors, No. { 2 No. of stages { 3 Diameters { 315-285-78 mm Stroke { 170 mm Driven by 2-CYL. - - -

avenging Air Pumps, No. { 2 Diameter { 170 mm Stroke { 170 mm Driven by

uxiliary Engines crank shafts, diameter as per Rule as fitted

R RECEIVERS:—Is each receiver, which can be isolated, fitted with a safety valve as per Rule yes.

What means are provided for cleaning their inner surfaces arrangements made for cleaning by steam.

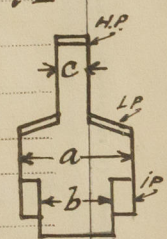
there a drain arrangement fitted at the lowest part of each receiver yes.

igh Pressure Air Receivers, No. 3 Cubic capacity of each 25 litres. Internal diameter 185 mm thickness 9.5 mm.

amless, lap welded or riveted longitudinal joint seamless. Material S. M. steel. Range of tensile strength 60.7 G. Working pressure by Rules 127.4 kg/cm².

arting Air Receivers, No. { 2 Total cubic capacity { 50 litres. Internal diameter { 185 mm thickness { 9.5 mm.

amless, lap welded or riveted longitudinal joint { 2 Material { S. M. steel. Range of tensile strength { 60.7 G. Working pressure by Rules { 127.4 kg/cm².



002062-002070-0061/3

Lloyd's Register
Foundation

© 2020
Lloyd's Foundation
002062-002070-0061

M/S "HILDA KNUDSEN"

- 1 small auxiliary air compressor.
- 2 of J. Samuel White & Co. Ltd. oil fuel burning aggregates with duplex pumps, heaters and filters complete.
- 3 winches on deck and steam for the heating coils in the cargo oil holds.

C. Schiffer.

SURVEYOR TO LLOYD'S
REGISTER OF SHIPPING

THE FOREGOING IS A CORRECT DESCRIPTION.

AKTIESELSKABET
NAKSKOV SKIBSVERFT

H. B. 1 Aug

Christiansen.