



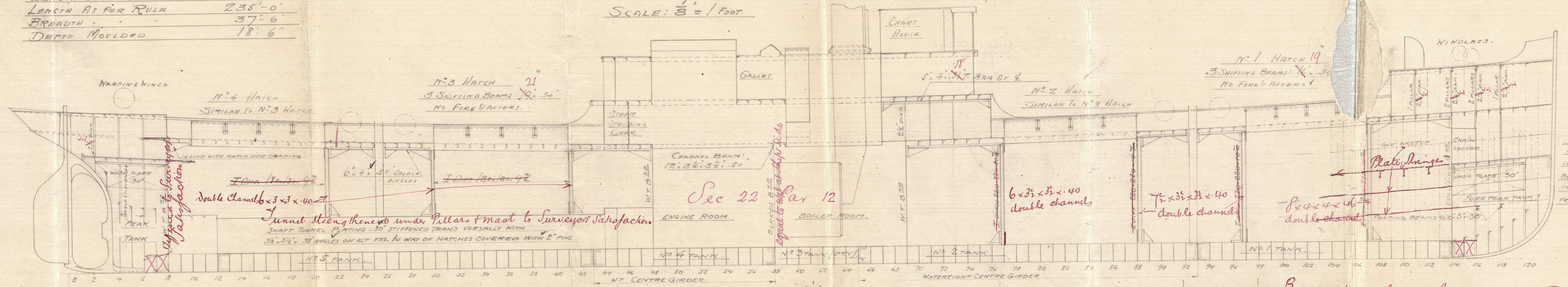
31.1.12

DIMENSIONS	
LENGTH BETWEEN PERPS	235'-0"
LENGTH AS PER RULE	235'-0"
BREADTH	37'-6"
DEPTH MOULDED	18'-6"

PROFILE OF A FREIGHT STEAMER

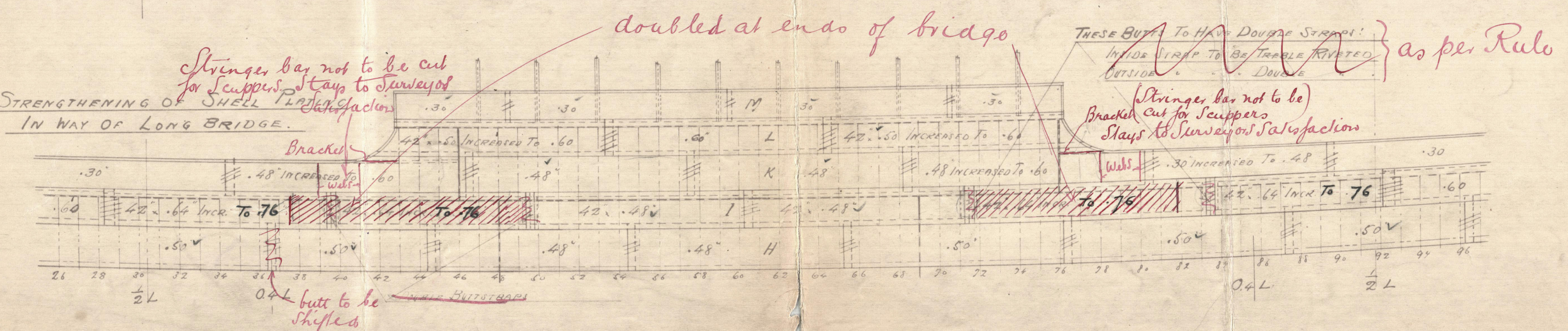
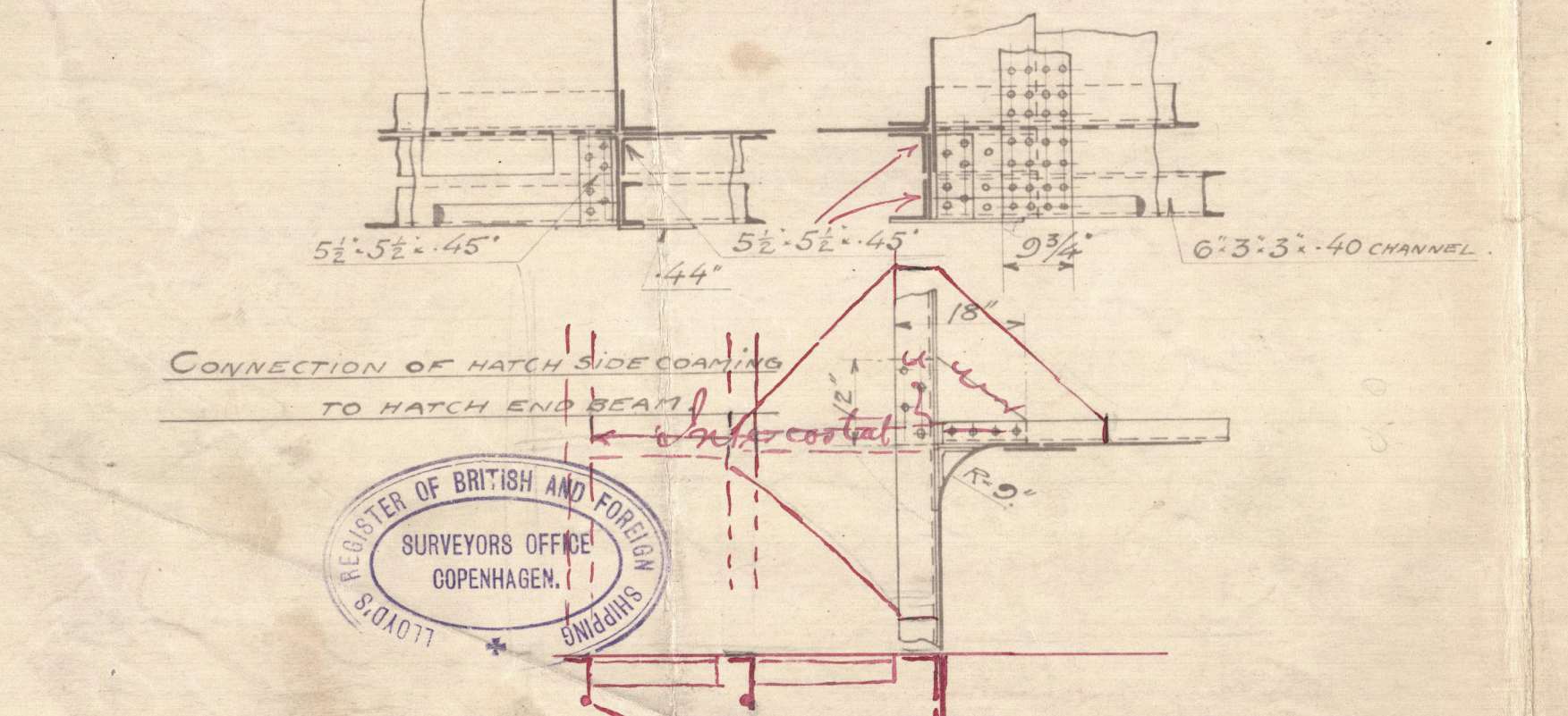
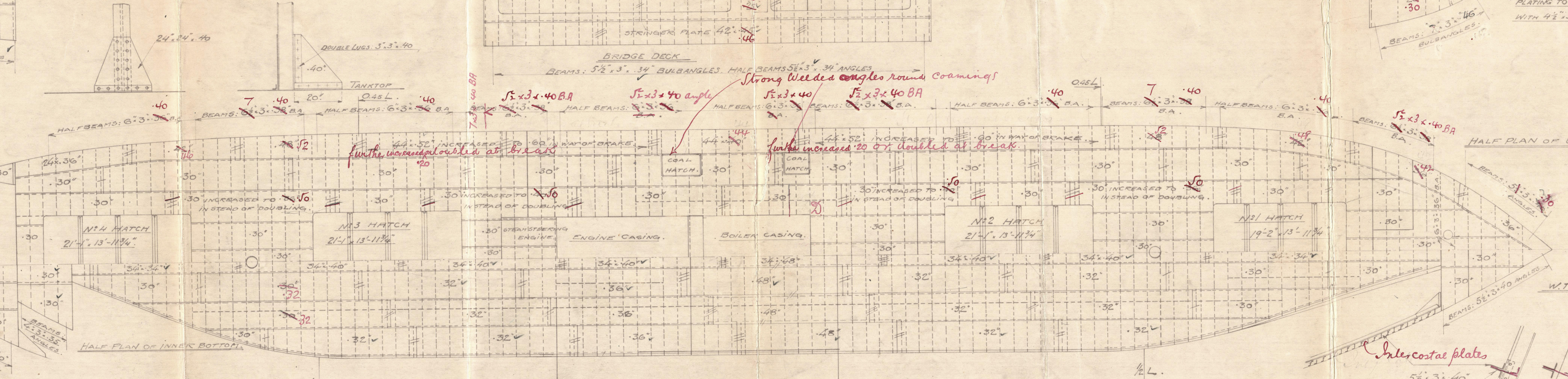
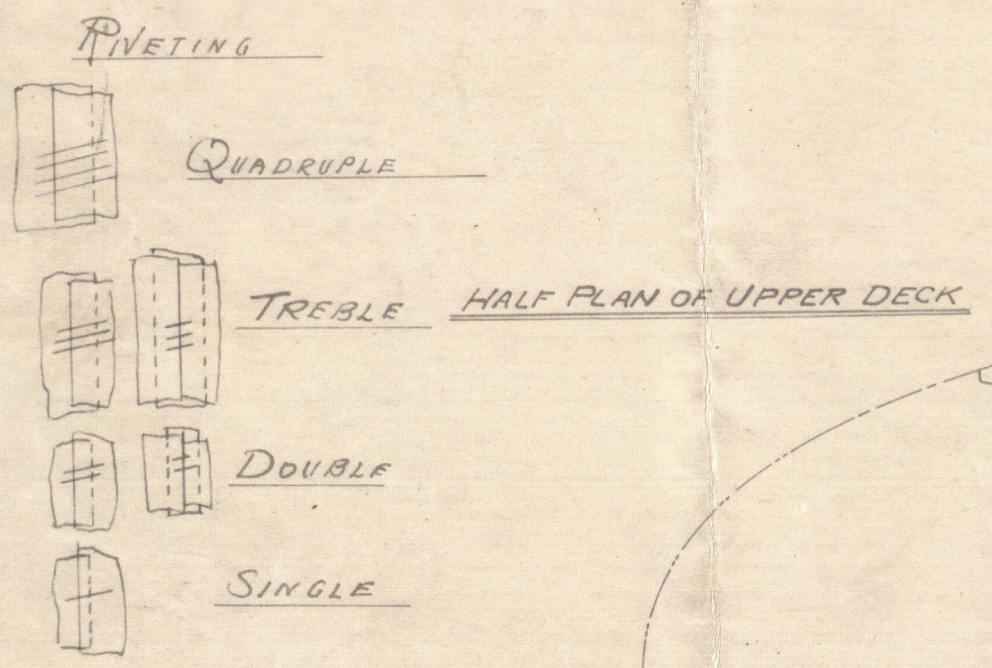
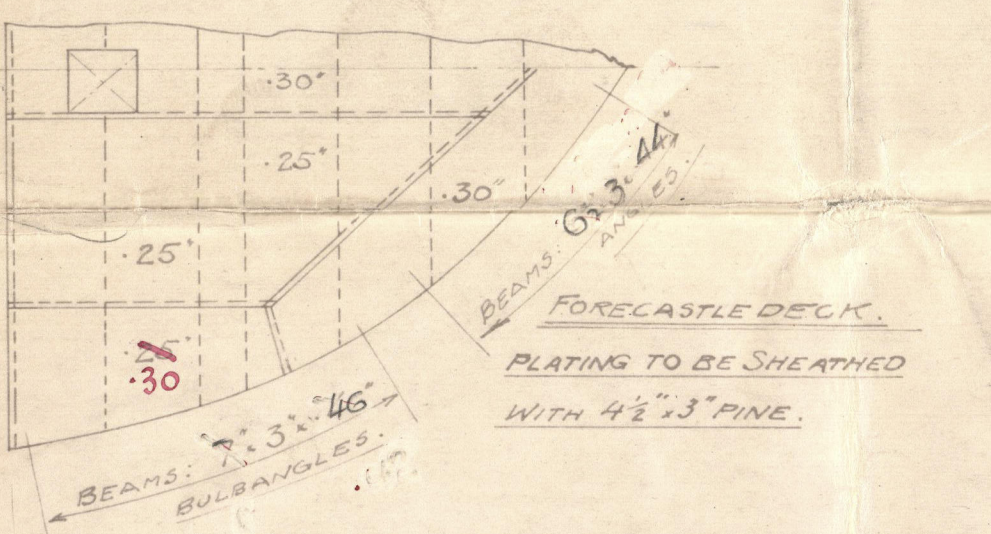
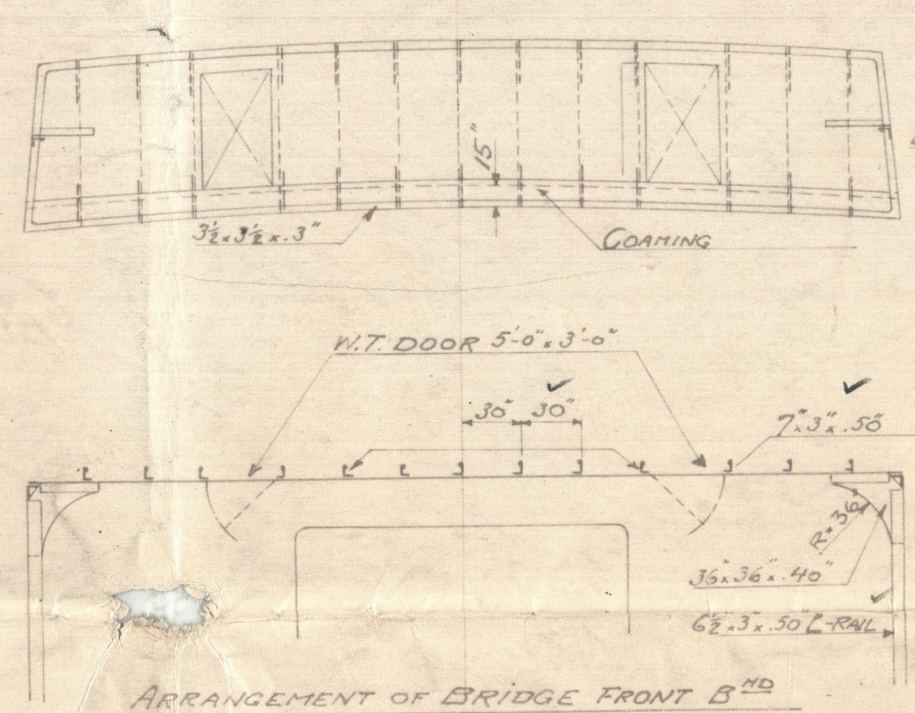
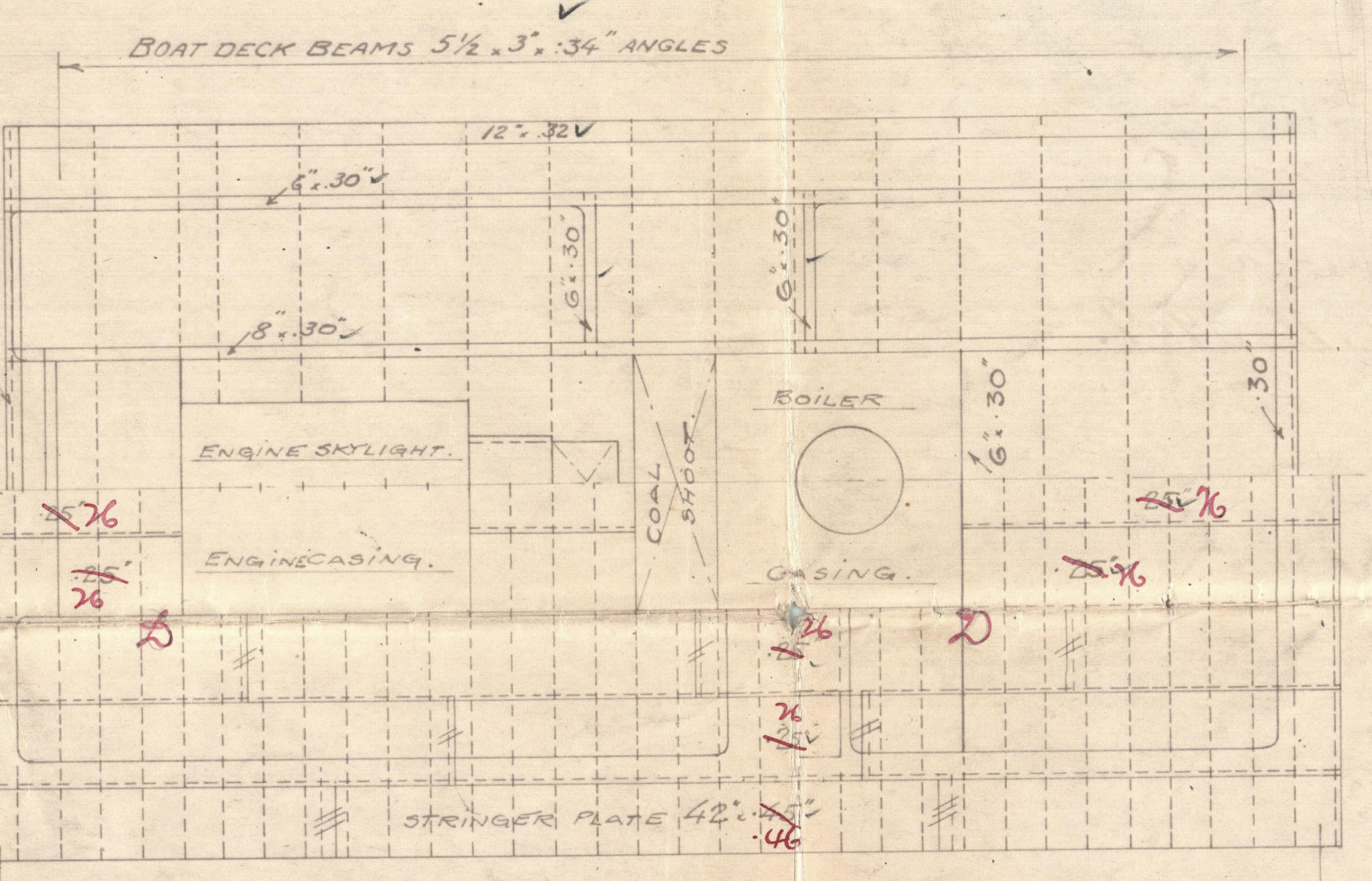
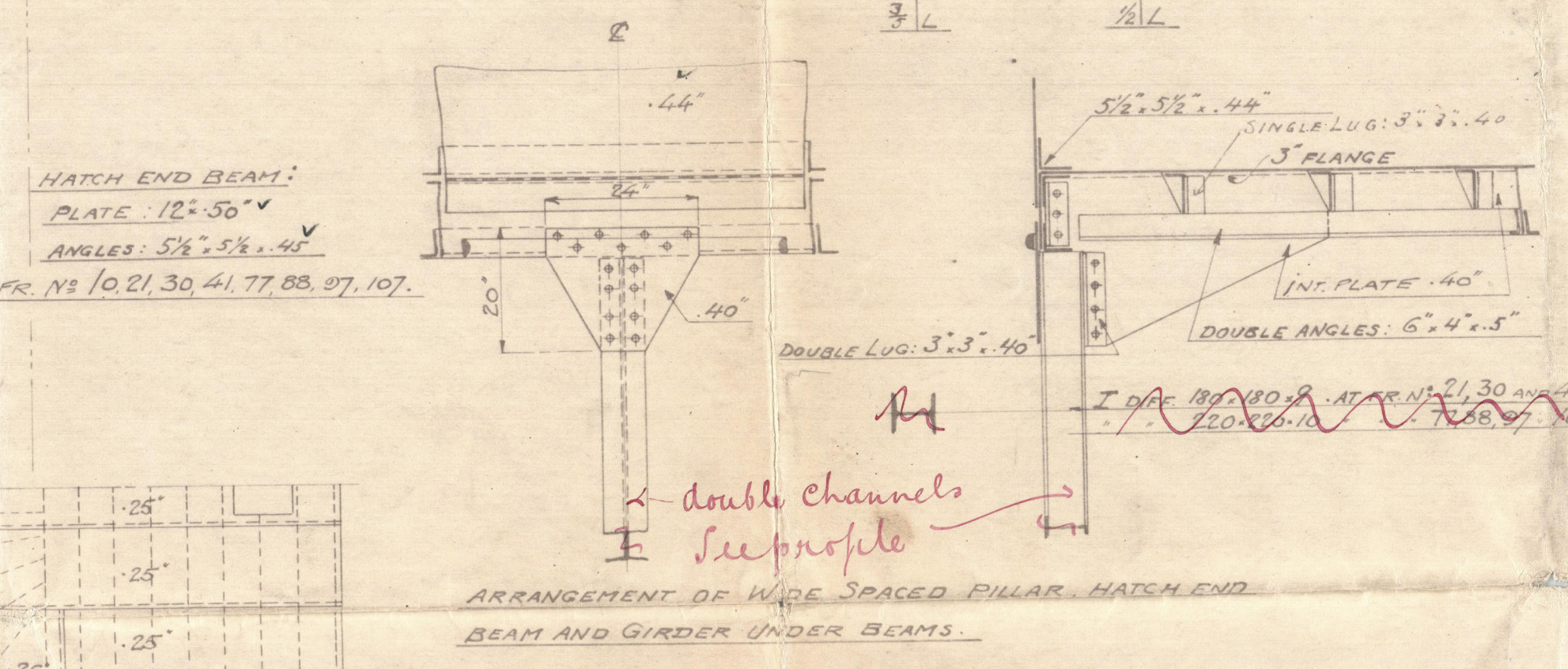
To CLASS LLOYD'S 100 A.I. SINGLE DECK STEEL.

SCALE: $\frac{1}{8}$ " = 1 FOOT.



BOW STRENGTHENING:
FROM STEIN TO ABOUT FR. N° 104.
INTERMEDIATE FRAMES TO BE FITTED
BESIDES THE SHELL PLATES BEING
INCREASED 1/2 TIMES THEIR TABULAR THICKNESS
FROM 2" ABOVE TO 2" BELOW THE LOAD WATERLINE.

Bottom strengthened forward as per Rule
to Surveyors satisfaction



3.5.100.
LLOYD'S PROFIL.

SKALA: 1:96 1:12
RIT. 25/12. 1.1.12
KOP.

KOCKUMS MEK. VERKSTADS A.B.
MALMÖ

31.1.12

109 2

152
2
3 64



© 2020

Lloyd's Register
Foundation

Kockums Møb. Verkestads
Aktiebolag, Malmb.
Building No. 109.

Elevation.

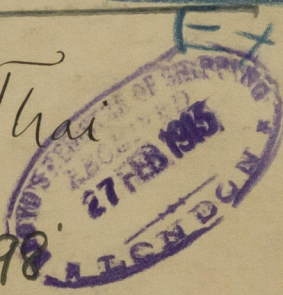


w/m HARDING

Oswin EX

S/s Thai

Cpn. 3798



~~S/s "Arvesta"~~

~~Cpn. Rpt. No. 3909.~~



Lloyd's Register
Foundation

002051-002061-0149