

26 JAN 1949

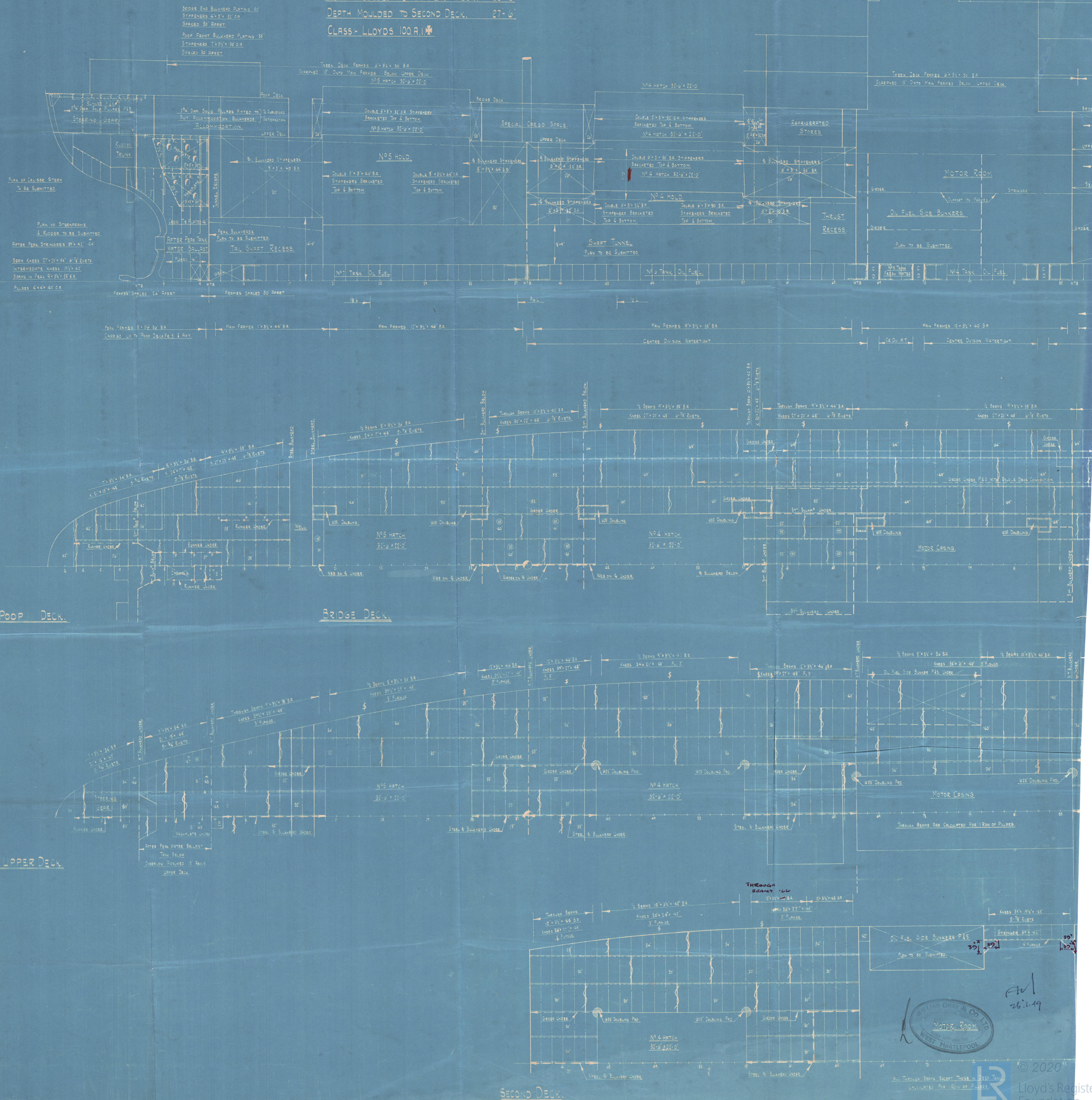
# PROFILE & DECK PLAN.

SCALE:-  $\frac{1}{8}" = 1 \text{ FOOT.}$

## DIMENSIONS -

LENGTH B.P. 435'-0"  
BREADTH MOULDED. 59'-6"  
DEPTH MOULDED TO UPPER DECK. 35'-0"  
DEPTH MOULDED TO SECOND DECK. 27'-6"  
CLASS- LLOYDS 100 A.1.

ALL B.L.S. ANGLE & CHANNEL SECTIONS ARE NEW BRITISH STANDARD SECTIONS.



Nº1236.



26.1.49



Group 1236.  
Commanded Profile & deck aft  
Apr 26.1.49

M.V. "ALTAIR" ★

WEST HARTLEPOOL RPT No. 19170.

RECORDS DEPT.  
LONDON

7

RETAIN

002051-002061-0021



© 2020

Lloyd's Register  
Foundation