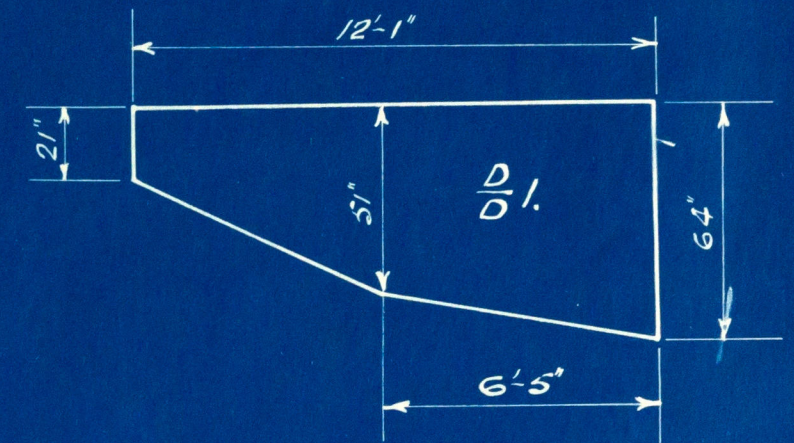
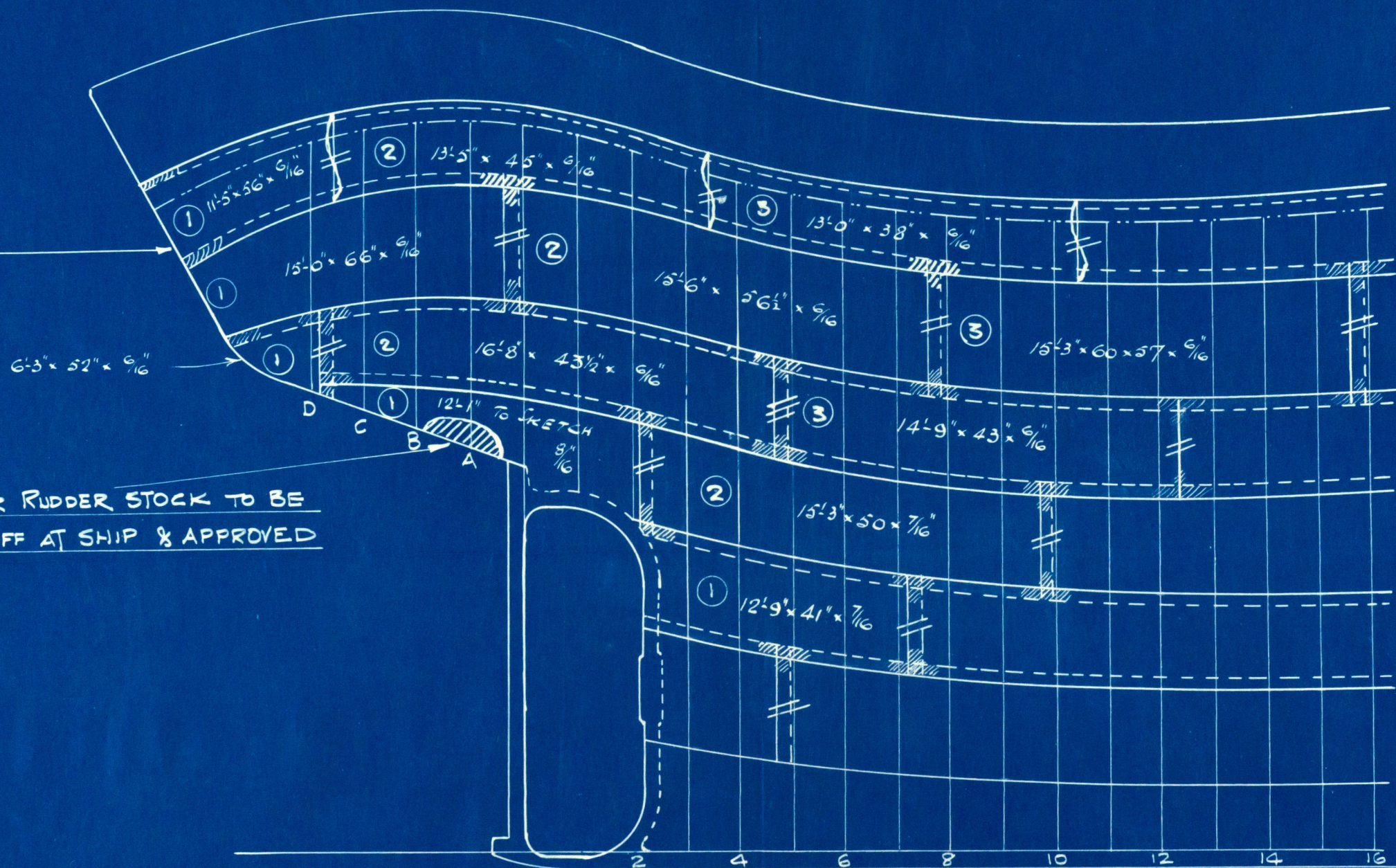




DARTHEMA
SHELL PLAN
NEW AFTER END
1/4" SCALE



STERN SHAPE BAR
4x4x.50



G. OUT

F. IN

E. OUT

D. IN.

C. OUT

B. IN

A. OUT.



JKL
24/2/39

Lloyd's Register
Foundation

002038-002010-0235

S.T. "Darthema"

Messrs. Smith's Dock Co. Ltd.

Shell plan & New after End

S.S. "Darthema"

MDB. RPT. No. 16585



002038-002050-0235



© 2020

Lloyd's Register
Foundation