

Lloyd's Register of Shipping.

Ship's Name **CORCHESTER**Official No. **149801**

Memorandum of alterations reported since ship was surveyed for assignment of Load Lines in

Existing trunk and manhole to A.P.T. removed, opening plated over and new manhole fitted outside new deck house. Manhole fitted on coaming 18" high.

Steel W.T. tunnel escape fitted at aft end of after hold. Escape of substantial construction, electrically welded. Exit thro' companion on R.Q.Dk. Companion of substantial steel construction, electrically welded. Steel hinged W.T. door, operated both sides, with sill 18" above deck.

Diaphragm space at fore end of R.Q.Dk. utilised as store space.

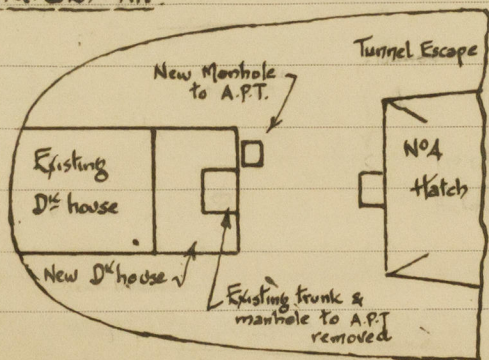
A steel hinged W.T. door fitted to R.Q.Dk. front Bhd on p.s.s. for access. Doors 3'-0" x 22" operated both sides, will be used only in port for storing purposes.

New deck house of substantial steel construction fitted on R.Q.Dk. aft, joining to existing deckhouse, containing magazine and storeroom.

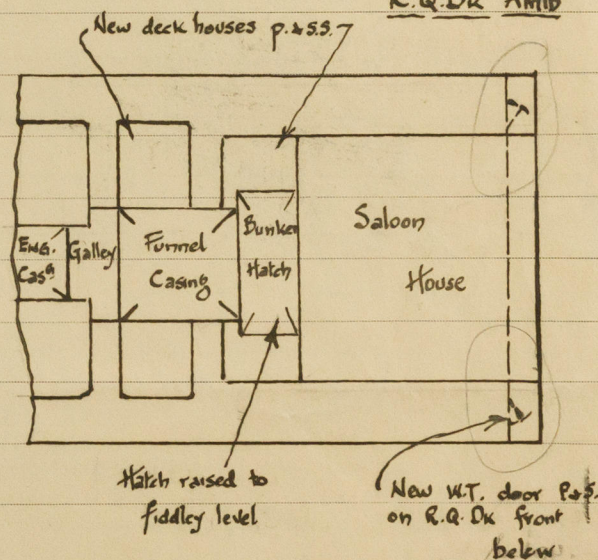
New deckhouses of steel substantially constructed fitted on R.Q.Dk. amidships to accommodate additional crew, washhouse & W.C. Discharges from washhouse & W.C. led into existing discharges.

Existing bunker hatch on R.Q.Dk. raised to level of fiddle top. Cleats battens, tarpaulins & covers altered to suit.

R.Q.Dk. Aft



R.Q.Dk. Amid



Fee £5-5-0

Noted
14 JUL 1943

C. Little

June 1943

© 2020