

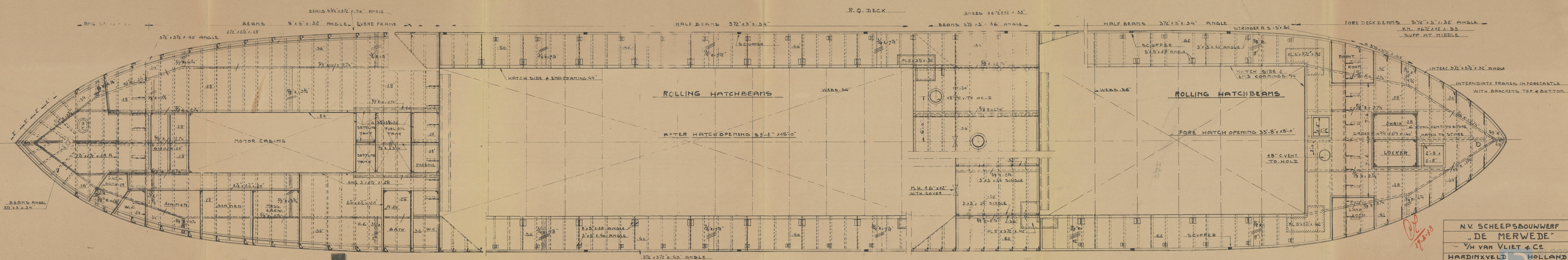
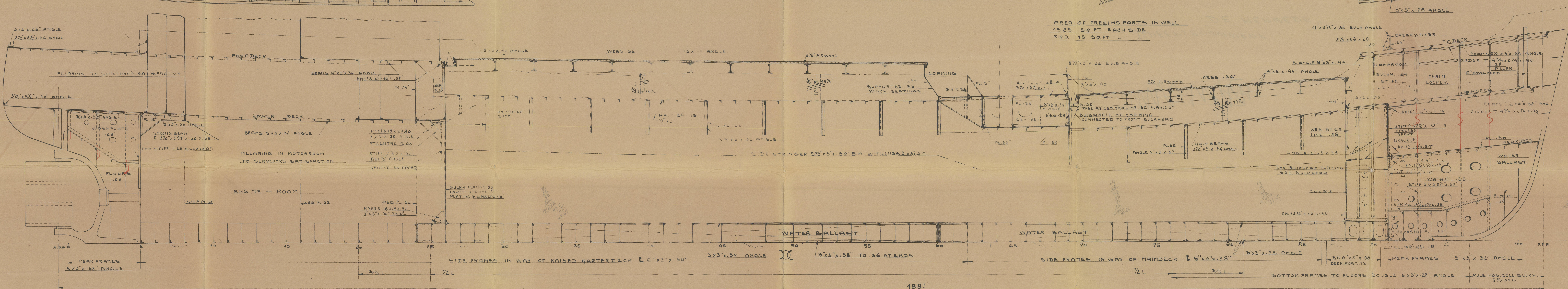
[illegible]

SCALE  $\frac{1}{4}" = 1'$

FRAME SPACING 22"

[illegible]

PILLARING UNDER WINDLASS  
WINCHES & STEERING GEAR TO  
SURVEYOR'S SATISFACTION

[illegible][illegible]

IN ACCORDANCE WITH LLOYD'S 30.12.37

N.V. SCHEEPSBOUWWERF
„DE MERWEDE“
Y/H VAN VLIET & C <sup>o</sup>
HARDINXVELD HOLLAND
LONG. SECTION & DECKS SWN:386
DATUM.22-12-'37 TEK. N <sup>o</sup> 1752-2

002038-002050-0042



6

AMMMA

SCHIEPSBOUWWERK

"DE MERWEDE"

Nº 386.

PROFILE & DECKS (AMENDED).

Citine

RETAIN

002038-002050-0042



© 2020

Lloyd's Register  
Foundation