

RIVETING.		
END CONNECTIONS	1/2 LEN	AT ENDS
CENTRE GIRDER	DOUBLE	DOUBLE
FOUNDATION PLATE	DOUBLE	DOUBLE
DECK STRINGER PLATE	DOUBLE	DOUBLE
DECK PLATING	DOUBLE	SINGLE
SHEERSTRAKE	DOUBLE	DOUBLE
TOP SIDE PLATING	DOUBLE	DOUBLE
SHELL PLATING	DOUBLE	SINGLE
BULWARK PLATING	SINGLE	SINGLE
SEAM CONNECTIONS.		
DECK PLATING	SINGLE	SINGLE
SHEERSTRAKE	SINGLE	SINGLE
TOP SIDE PLATING	SINGLE	SINGLE
SHELL PLATING	SINGLE	SINGLE
KEEL	SINGLE	SINGLE

MIDSHIP SECTION. RAISED QUARTER DECK COASTER NO 399.

SCALE 1" = 1 FOOT.

15TH FEBY. 1926.

CLASS - BRITISH CORPORATION BS *

DIMENSIONS: - LEN B P 124'0", B M 22'0", D M 9'9" UPPER DECK, 12'10 1/2" QUARTER DECK

7-9
3 1/4 R 200 K.

EQUIPMENT TONNAGE.

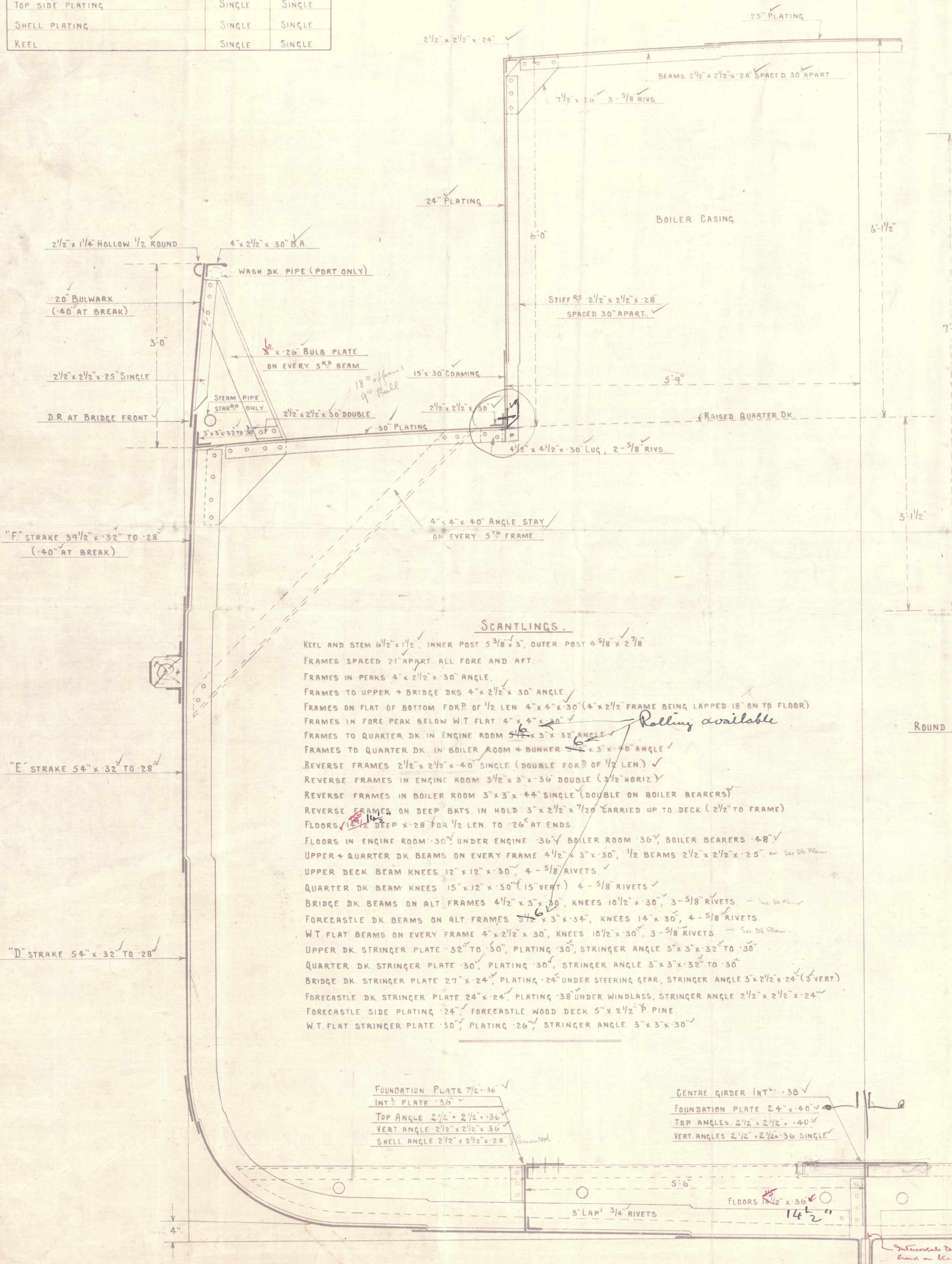
UPPER DK 124 x 22 x 9.75 x 0.72 = 191.5
QUARTER DK 46 x 22 x 3.1 x 0.75 = 15.1
BRIDGE DK 8.75 x 22 x 7.75 x 0.75 = 7.5
FORECASTLE DK 22 x 22 x 5 x 0.75 = 12.1
TOTAL = 226.2

EQUIPMENT

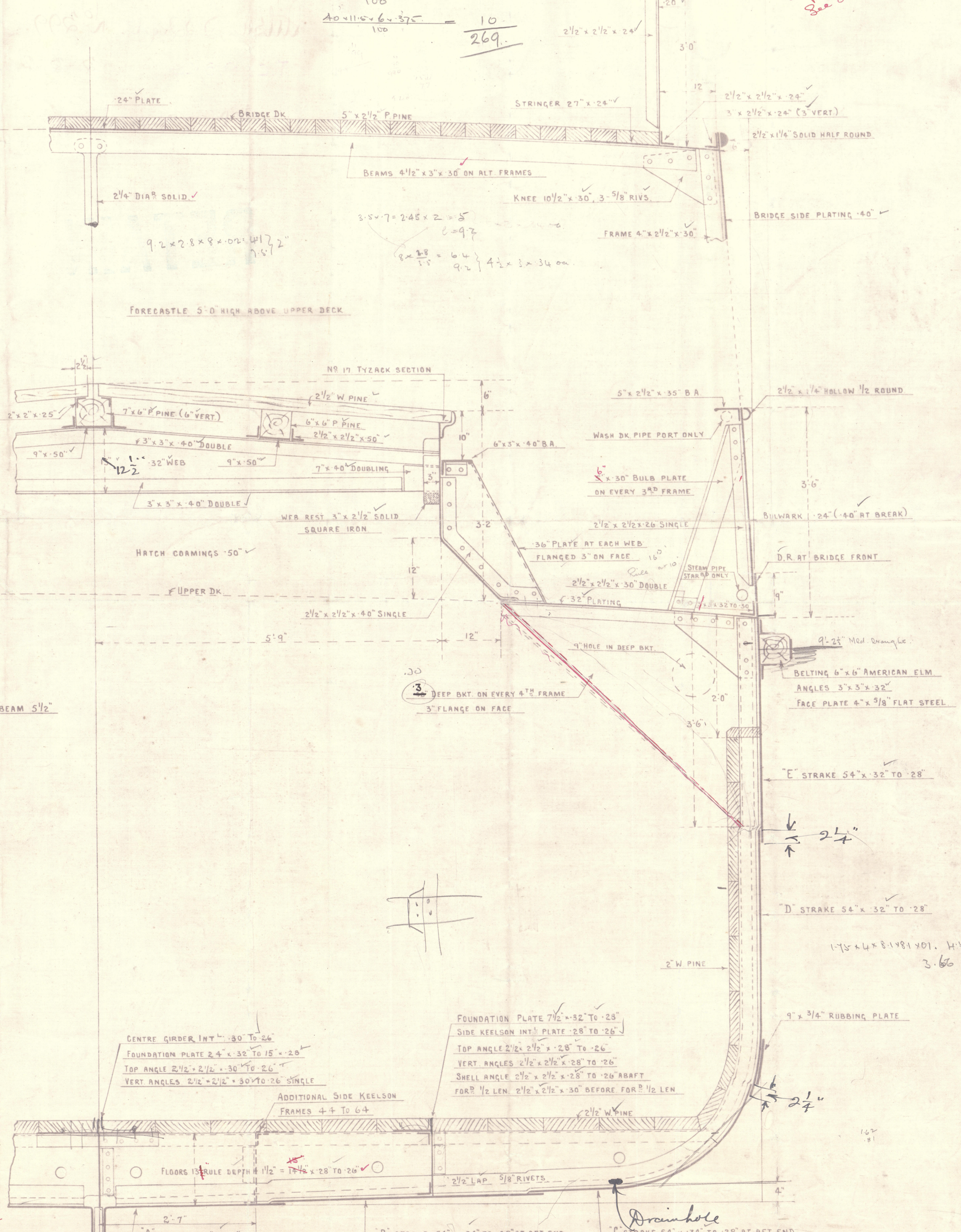
2 BOWER ANCHORS EACH 7 CWTs (STOCKLESS)
1 STREAM ANCHOR 2 1/4 CWTs (EX STOCK)
1 KEDGE ANCHOR 1 CWT (EX STOCK)
150 FATHOMS 1 1/2" STUD CHAIN CABLE
45 FATHOMS 2 1/4" STEEL STREAM WIRE
60 FATHOMS 2 1/4" STEEL WIRE TOWLINE
90 FATHOMS 4 1/2" MANILLA HAWSER

2 MAR. 1926

Approved *[Signature]*
See Letter 25.3.26



SECTION THRO' BOILER ROOM (LOOKING AFT)



SECTION THRO' HOLD (LOOKING FORWARD)

2 x 12 x 16 x 16 = 6.91 x 12.5 = 8.8
1.75 x 9.2 x 22 x 0.18 = 6.4 13 x 28
1.3 x 13 x 34
0.18 = 6.4
1.75 x 9.2 x 22 x 0.18 = 6.4
1.75 x 9.2 x 22 x 0.18 = 6.4
2 x 12 x 16 x 16 = 6.91 x 12.5 = 8.8

M. M.
2.018.

1

Midship Section.

Dulsa S.B. Co. No. 299.

T.C. 19/5/26.

2-2-26.

$\frac{3}{4}$ " MOYALLON

RETAIN



© 2020

Lloyd's Register
Foundation

002013-002023-0111