

Length B.P. .... 210'-0"  
 Breadth Mld. .... 36'-6"  
 Depth Mld. to Upper Deck .... 21'-8"  
 Depth Mld. to 2<sup>nd</sup> Deck .... 14'-1"

To class Lloyds 100 A-1 "with freeboard," part welded.

Draft to be maximum corresponding to open shelter deck freeboard.

"B" CLASS COASTERS

LLOYDS NUMERALS

L = 210.0 FT.  
 B = 36.5 FT.  
 D = 21.58 FT.  
 d = 11.38  
 $\frac{L}{B} = \frac{210.0}{36.5} = 5.75$   
 $\frac{L}{D} = \frac{210.0}{21.58} = 9.7$

1<sup>ST</sup> NUMERAL

L x D = 210.0 x 21.58 = 4531.8

2<sup>ND</sup> NUMERAL

L x (B x D) = 210.0 x 58.08 = 12,196.8

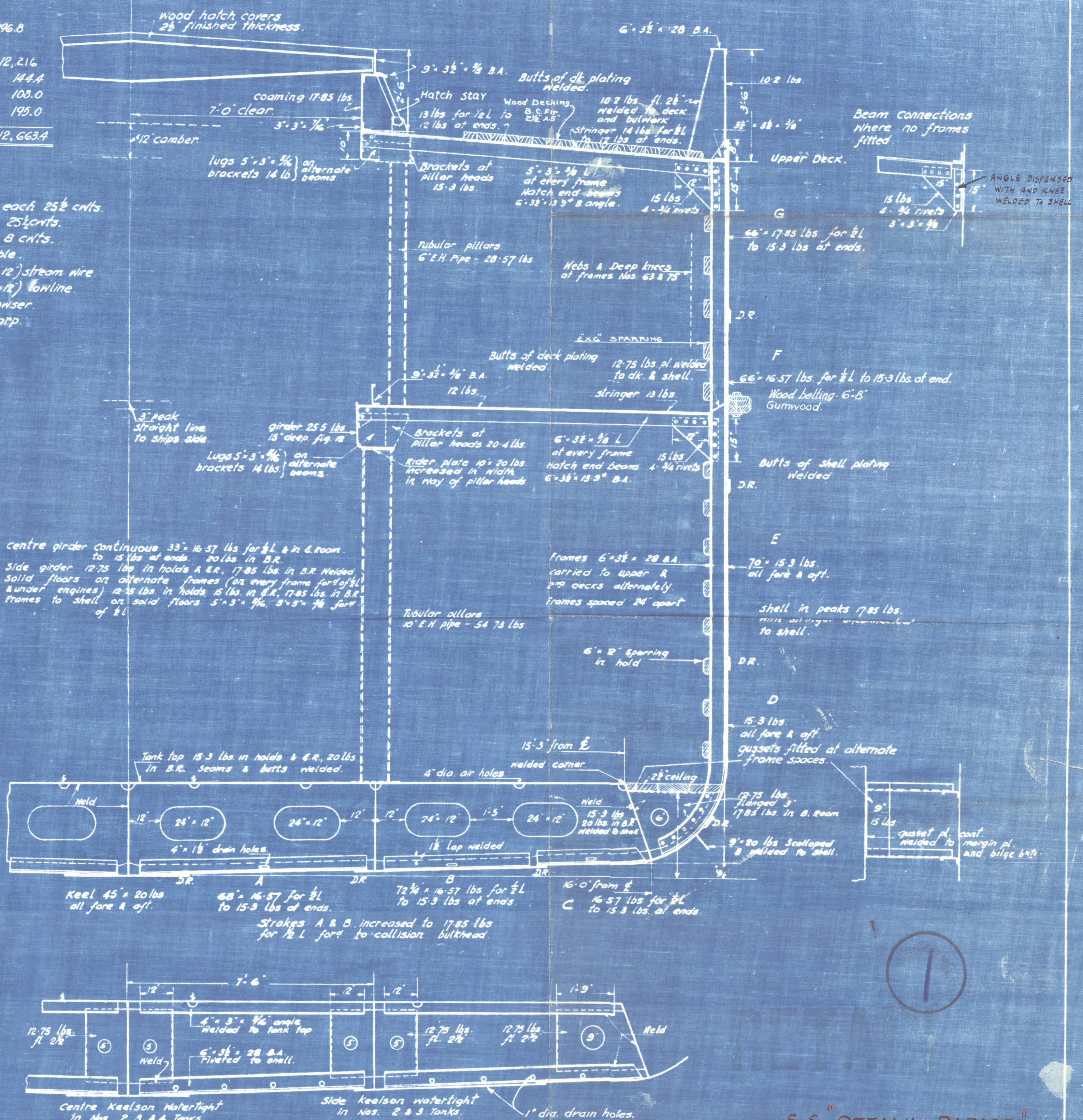
EQUIPMENT NUMERAL

L x (B x D) = 210.0 x 58.17 = 12,216  
 FORECASTLE = 275 x 70 x .75 = 144.4  
 MIDSHIP DK. HSE. = 270 x 80 x .50 = 108.0  
 AFTER DK. HSE. = 52.0 x 75 x .5 = 195.0  
 EQUIPMENT NUMERAL = 12,663.4

Equipment.

2 bower anchors stockless each 25½ cnts.  
 1 bower anchor stockless 25½ cnts.  
 1 stream anchor stockless 8 cnts.  
 210 fathoms 1½" stud link cable.  
 75 fathoms 3½" circ. f.s.w.r. (6x12) stream wire.  
 90 fathoms 3½" circ. f.s.w.r. (6x12) towline.  
 90 fathoms 6" circ. hemp hawser.  
 90 fathoms 5" circ. hemp warp.

stem bar T = 1½"



S.S. "OTTAWA PARADE"

Accompanying VANCOUR HULL ENTRY  
 REPORT NO. 4830

BURRARD DRY DOCK CO. LTD.  
 NORTH VANCOUVER, B.C.  
 HULL DEPARTMENT

TYPE "B" COASTER [STEAM]

MIDSHIP SECTION

OCT. 18<sup>TH</sup> 1945 SCALE: 1/4" = 1' FT. DWG. NO.