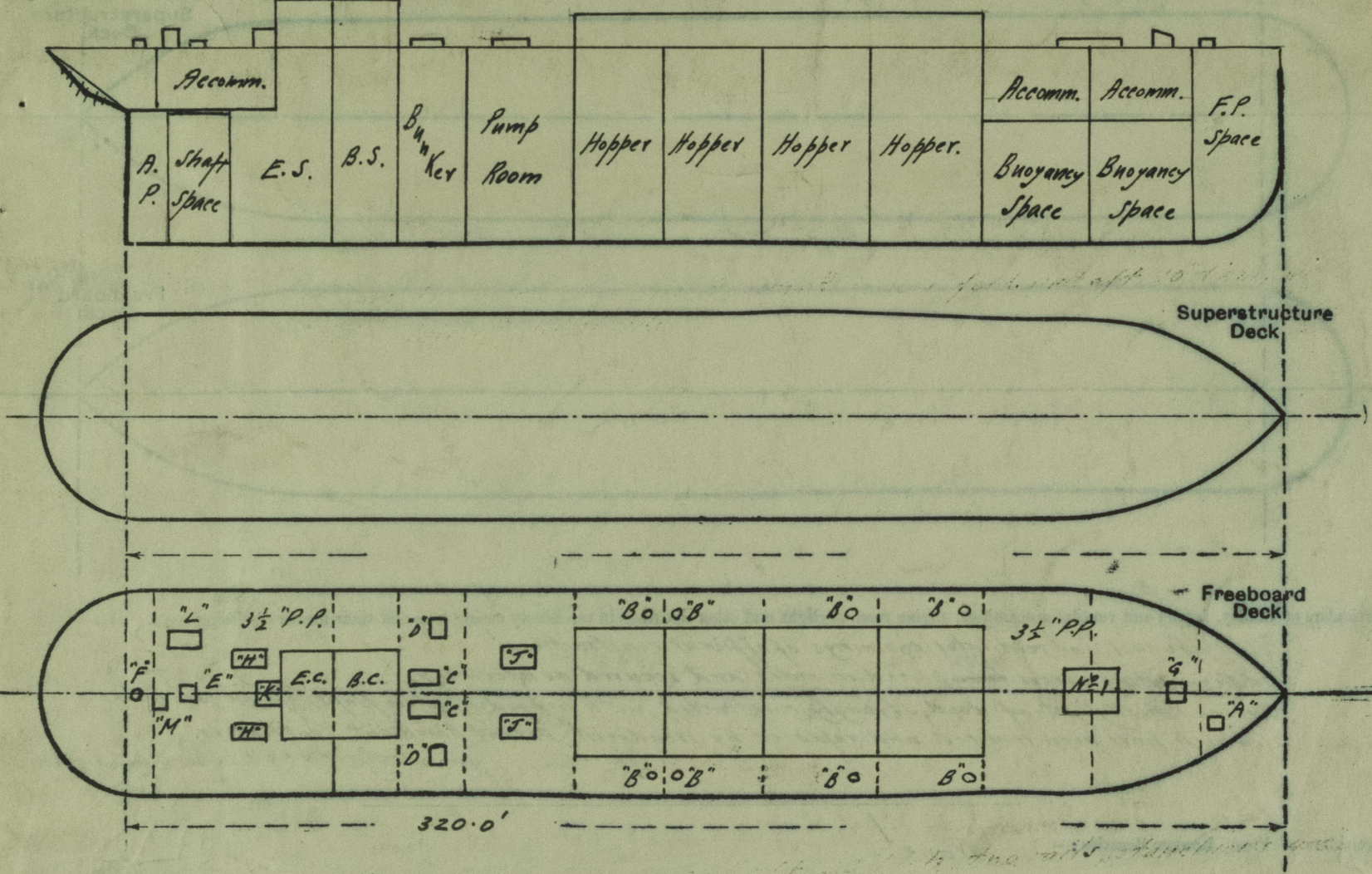


Lloyd's Register of Shipping.  
SURVEYS FOR FREEBOARD.  
(CONDITIONS OF ASSIGNMENT.)

Hd 5519

Ship's Name "BURBO" Port of Survey Liverpool  
Official Number 125648 Surveyor's Signature A.S. Jackson  
Nationality and Port of Registry British Liverpool Date of Survey 19/6/44 and subsequently.

Disposition and dimensions of superstructures, trunks, deckhouses and machinery casings to be inserted in the diagrams and tabular statement:



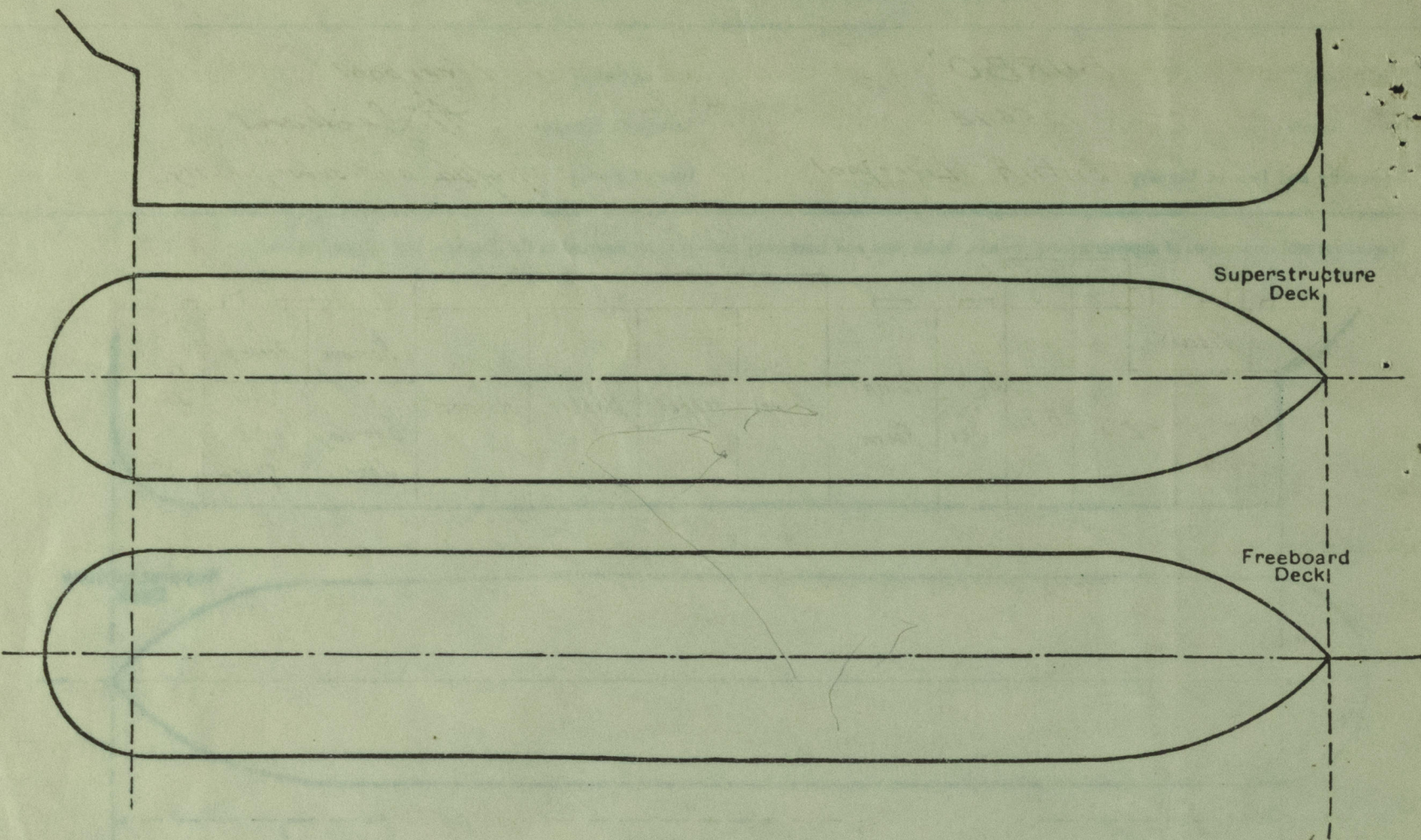
Particulars of Superstructures, Trunks, Casings, Deckhouses.								
	Coaming	Plating	Stiffeners	Spacing	End Attachments of Stiffeners	Size of Openings	Height of Sills	Height of Casings
Poop Bulkhead ...	✓	✓	✓	✓	✓	✓	✓	✓
Raised Quarter Deck Bulkhead ...	✓	✓	✓	✓	✓	✓	✓	✓
Bridge, After Bulkhead ...	✓	✓	✓	✓	✓	✓	✓	✓
Bridge, Forward Bulkhead ...	✓	✓	✓	✓	✓	✓	✓	✓
Forecastle Bulkhead ...	✓	✓	✓	✓	✓	✓	✓	✓
Trunk, Aft ...	✓	✓	✓	✓	✓	✓	✓	✓
Trunk, Forward ...	✓	✓	✓	✓	✓	✓	✓	✓
Exposed Machinery Casings on Freeboard or Raised Quarter Deck ...	✓	✓	3 1/2 x 3 x 34	29"	nil	4 @ 4'6" x 2'0"	18" ab. w.s.	7'2" ab. w.s.
Exposed Machinery Casings on Superstructure Decks ...	✓	✓	✓	✓	✓	✓	✓	✓
Machinery Casings within Superstructures not fitted with Class I Closing Appliances ...	✓	✓	✓	✓	✓	✓	✓	✓
Deckhouses on Flush Deck Ships ...	✓	✓	✓	✓	✓	✓	✓	✓
Particulars of Closing Appliances (state if capable of being manipulated from both sides).								
Poop Bulkhead ...	✓							
Raised Quarter Deck Bulkhead ...	✓							
Bridge, After Bulkhead ...	✓							
Bridge, Forward Bulkhead ...	✓							
Forecastle Bulkhead ...	✓							
Exposed Machinery Casings on Freeboard or Raised Quarter Deck ...	✓							
Exposed Machinery Casings on Superstructure Decks ...	✓							
Machinery Casings within Superstructures not fitted with Class I Closing Appliances ...	✓							
Deckhouses on Flush Deck Ships ...	✓							

Now placed in order.  
Lloyd's Register Foundation



PARTICULARS OF PROTECTION TO OPENINGS, ETC.

The following diagrams should be used to indicate the positions of cargo and coaling hatchways, gangway, cargo and coaling ports, ventilators, companionways, etc., which would affect the seaworthiness of the ship :—



Particulars of fiddle, funnel and ventilator coamings, engine room skylight and other openings in machinery casing tops and their means of closing :—

Fiddle, funnel, and ventilator coamings of efficient construction.  
Fiddle grating covers <sup>NOW</sup> placed in order and secured as necessary.  
Engine Rm. skylight of wood, strongly constructed, with hinged wooden flaps, glazed, sections of which have been removed and replaced by Windvent Patent Blackout Ventilators.

Particulars of Flush Bunker Scuttles :—

None.

Particulars of Companionways :—

*The 3 bowby latches to forward of after accommodation have been replaced by strong steel latches fitted with steel w.t. doors capable of being manipulated from both sides.*  
"G" on sketch - To forward Accom<sup>ts</sup>. Spaces of teak, strongly constructed, 5'9" x 4'0", 4'0" high aft, 3'0" forward. Closed by sliding top and hinged wood door capable of being manipulated from both sides. Sill 11" above wood deck sheathing.  
"H" - To Accom<sup>ts</sup> abaft E. Rm. 1P & 1S of teak, strongly constructed, 6'0" x 3'4", 3'0" high aft, 3'0" forward. Closed by hinged wood door capable of being manipulated from both sides. Sill 10" above wood deck sheathing.

Particulars of Ventilators in exposed positions on freeboard and superstructure decks :—

5 mushroom vents  
8" dia. C.I. coamings  
6" above deck supplied  
by M.O.W.T. fitted to  
Ford accom. space in  
line of C.I. coamings  
for boggy close funnels.

Nº	Position	Size	Ht & Thkns.	Compartment.	Nº	Position	Size	Ht & Thkns.	Compartment.
4	For <sup>d</sup> of Hopper	6"	33" x 28"	Accom <sup>ts</sup> . Ford.	8	Aft. of E.C.	6"	33" x 28"	Accom <sup>ts</sup> . Aft.
1	" " "	5"	33" x 28"	" "	2	"	8"	33" x 32"	" "
2	" " "	8"	33" x 32"	Ford. Buoy Spaces.	1	FORECAST FORECAST	15"	36" x 25"	REFRIG COMPT
2	" " "	6"	33" x 28"	Accom <sup>ts</sup> . Ford.					
2	" " "	12"	36" x 34"	For <sup>d</sup> . Buoy. Spaces.					
8	Abs <sup>t</sup> . Hopper	3 1/2"	33" C.I.	Buoyancy Spaces Aft <sup>d</sup> . Hoppers.					
2	Aft Hopper	24"	36" x 40"	To Pump Rm.					
2	" "	18"	36" x 40"	" " "					
2	" "	18"	36" x 40"	" Bunkers.					

Wood plugs and canvas covers  
~~to be~~ supplied.

Particulars of Air Pipes in exposed positions on freeboard, raised quarter, or superstructure decks :—

Nº	Position	Size	Ht.	Compartment.
2	Aft of E.C.	3" G.N.	26"	Accom <sup>ts</sup> . Aft.

<sup>SUPPLIED.</sup>  
Wood plugs ~~to supply~~.



© 2019

Lloyd's Register  
Foundation



Particulars of Gangway Cargo and Coaling Ports:—

None ✓

Particulars of Scuppers and Sanitary Discharge Pipes:—

Scuppers 6"x2" cut in stringer angles, 5 in Ford. Bulwark Pts,  
6 in After Bulwark Pts. ✓  
Sanitary discharge pipes fitted with G.M. storm valves below  
freeboard deck.

Particulars of Side Scuttles:—

Below freeboard deck in Accom<sup>ts</sup> Spaces ford. and aft 10" diam, with  
strong hinged deadlights. ✓

Vertical distance of Sill of lowest Side Scuttle above top of keel

22'6" ✓

Particulars of Guard Rails:—

Between bulwarks for<sup>d</sup> and aft 36" high, two rails, stanchions 4'6" apart. ✓

Particulars of Gangways, Lifelines, etc.:—

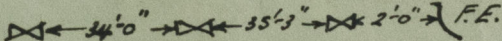
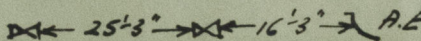
Strong fore and aft gangway from fiddle top to bridge erection  
on top of sand launder, 36" high, two rails, stanchions 4'9" apart.  
Lifelines ~~to be~~ provided from bridge erection to accom<sup>ts</sup> ford. ✓

Particulars of Freeing Arrangements.

	Length of Bulwark	Height of Bulwark	Size of Freeing Ports	Number each side	Area each side	Rule area each side
After Well ... ..	93'0"	3'0"	2'3"x1'4"	3	9φ	✓
Forward Well ... ..	91'0"	3'0"	2'3"x1'4"	2	6φ	✓

State position of each freeing port ... ..

F. and A. position and height above deck edge)

{ After Well:—   
{ Forward Well:— 

State whether the freeing ports are fitted with shutters, bars, or rails, and give particulars of such:— 1" hor. bar at half height of port.

Additional area where sheer is less than standard.

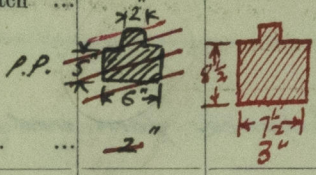


© 2019

Lloyd's Register  
Foundation



# PARTICULARS OF PROTECTION TO OPENINGS, ETC.

HATCHWAYS ON FREEBOARD AND SUPERSTRUCTURE DECKS.									
Description of Hatchway	...	...	...	N <sup>o</sup> 1.					
Dimensions of Hatchway	...	...	...	17'0" x 6'0"					
COAMINGS	{	Height above Deck	...	22'6" W.T.					
		Thickness	...	3/4"					
		Stiffeners	...	3/4"					
		Brackets, Stays	...	1 1/2" EACH SIDE.					
HATCH BEAMS	{	Number	...	W.T.					
		Spacing	...	13'6" at centre of hatch					
		Scantling and Sketch	...	F&A forming Hatch Beam.					
FORE AND AFTERS	{	Number	...	1					
		Spacing	...	On C.L.					
		Unsupported Lengths	...	8'6"					
		Scantling and Sketch	...						
HATCH COVERS	{	Material	...	W.P.					
		Thickness	...	2 1/2"					
		How fitted	...	Attnant.					
		Bearing Surface	...	2"					
Spacing of Cleats	...	...	...	18"-20"					
Number of Tarpaulins	...	...	...	Fit 2					
<p>*Are wood fore and afters steel shod at all bearing surfaces? <del>NO</del> YES</p> <p>Are battens and wedges efficient and in good condition? <del>To place in order</del> YES</p> <p>Are tarpaulins in good condition and in accordance with rule requirements? <del>To place in order</del> YES.</p> <p>Are lashings provided in accordance with rule requirements? ✓</p>									

Particulars of any special features:— Small Hatches "A" on sketch. Hatch to F.P. Store 3'0" x 3'0", coaming 21' x 30' above wood deck sheathing. Cleats and hatch battens. Wood hatch cover and tarpaulins ~~to place in order~~.

"B" — Circular escape hatches to buoyancy spaces P.T.S., 20" diam., 12" channel coaming. Closed by loose plate cover 38", 3-hinged clips. Clips ~~to be~~ freed. Gaskets ~~to be~~ fitted to make covers W.T., and securing chains ~~to be~~ fitted.

"C" — Coaling hatches, 6'0" x 4'0", coaming 21' x 38", above wood deck sheathing. Cleats and hatch battens. Wood hatch covers and tarpaulins ~~to place in order~~.

"D" — Coaling hatches, 3'10" x 3'10", coaming 21' x 34" above wood deck sheathing. Cleats and hatch battens. Wood hatch covers and tarpaulins ~~to place in order~~.

"E" — Hatch 4'0" x 5'0", coaming 21' x 34" above wood deck sheathing, permanently battened down and fitted with four bullseyes for lighting space below.

"F" — Hatch to After Store 23" diam., 12" channel coaming, closed by loose plate cover 38", 3-hinged clips. ~~Clips to be~~ freed. Gasket ~~to be~~ fitted to make cover W.T., and securing chains ~~to be~~ fitted.

Skylights "J" on sketch. To pump room 1P+1S, of teak, 7'6" x 5'9". Height at centre 3'6", at sides 2'3". Glazed hinged flaps. ~~to be~~ battening down arryts. provided. Hinges to flaps, and supports ~~to be~~ placed in order.

Endorsement at first survey and at surveys for renewal of Certificate:—

The fittings and appliances are in accordance with the particulars shown on this form (or as now modified) and are in good condition.

Skylights (Contd.) "K" — To Accommod. Spaces aft of E. Rm., of teak, 6'3" x 3'9", 4'0" high at centre, 3'0" at sides. Glazed hinged flaps. ~~to be~~ battening down arryts. provided.

"L" — To Accommod. Pside aft, of teak, 6'6" x 3'6", 4'4" high at centre, 3'2" at sides. Glazed hinged flaps. ~~to be~~ battening down arryts. provided.

"M" — To After Accommod. Space, of teak, 4'4" x 4'0", 4'4" high at centre, 3'2" at sides. Glazed hinged flaps. ~~to be~~ battening down arryts. provided.