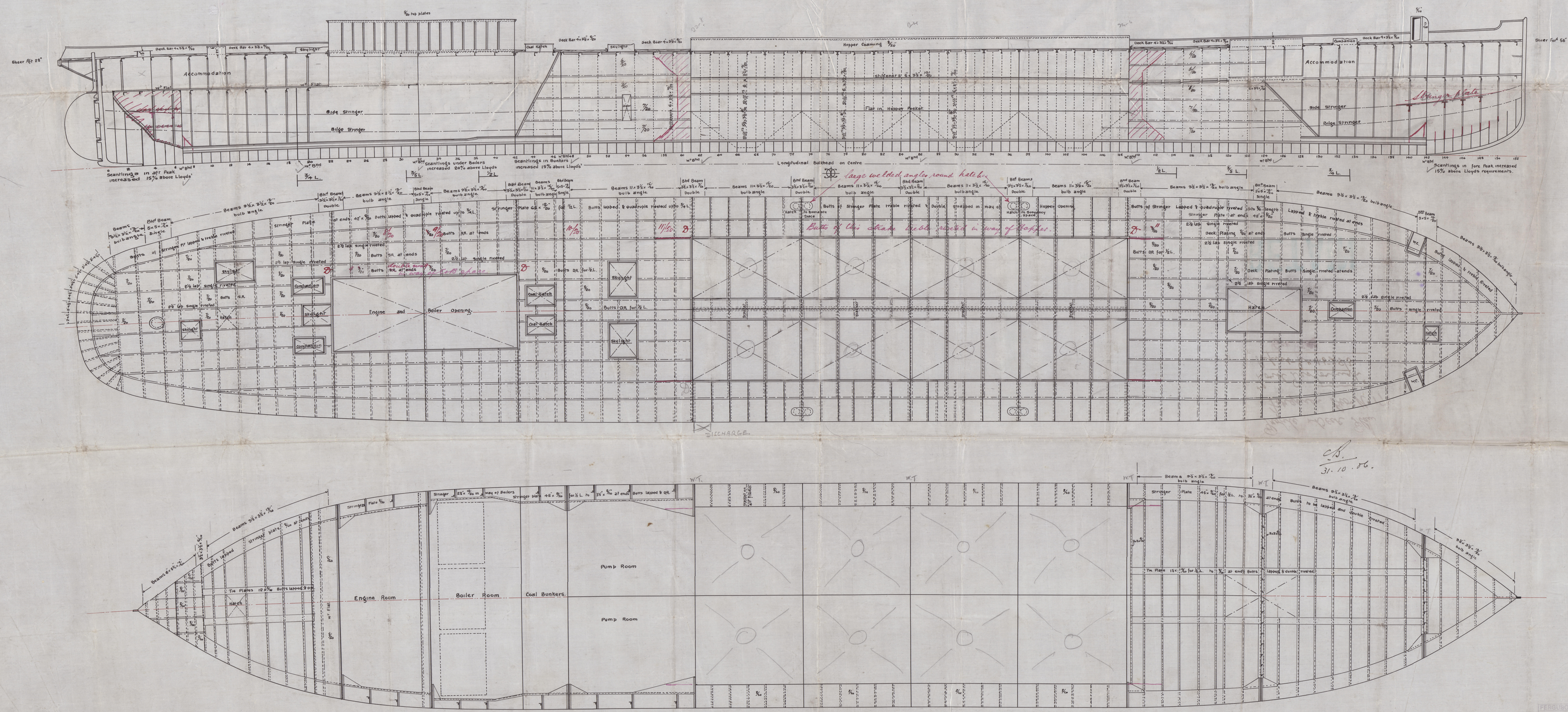


31.10.06  
14.12.06  
6.2.07  
12.3.07

FERGUSON BROS.  
PORT-GLASGOW

—PROFILE AND DECK PLAN—  
3500 TON TWIN SCREW SAND PUMP HOPPER DREDGER  
—for—  
—RIVER THAMES.—  
—DIM<sup>s</sup> 320' x 52'-9" x 22'-6"  
—SCALE  $\frac{1}{8}$  ONE FOOT.—

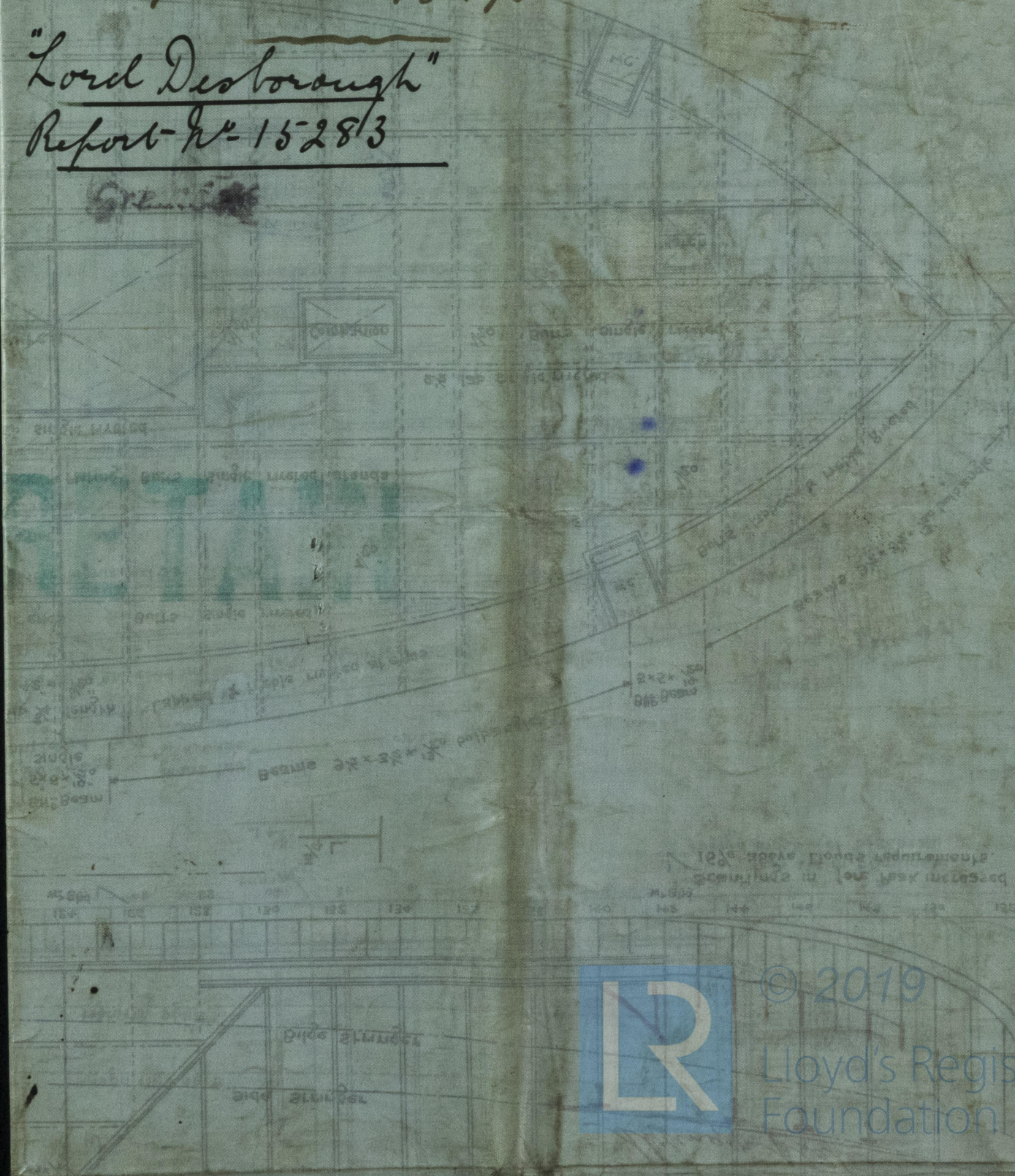


FERGUSON BROS.  
ORDER NO. 173  
DRAWING BY R.D.  
CHECKED BY  
DATE 28th Oct 06



Profile & Deck Plan  
Ferguson Bro No 173

"Lord Desborough"  
Report No 152813



© 2019

Lloyd's Register  
Foundation