

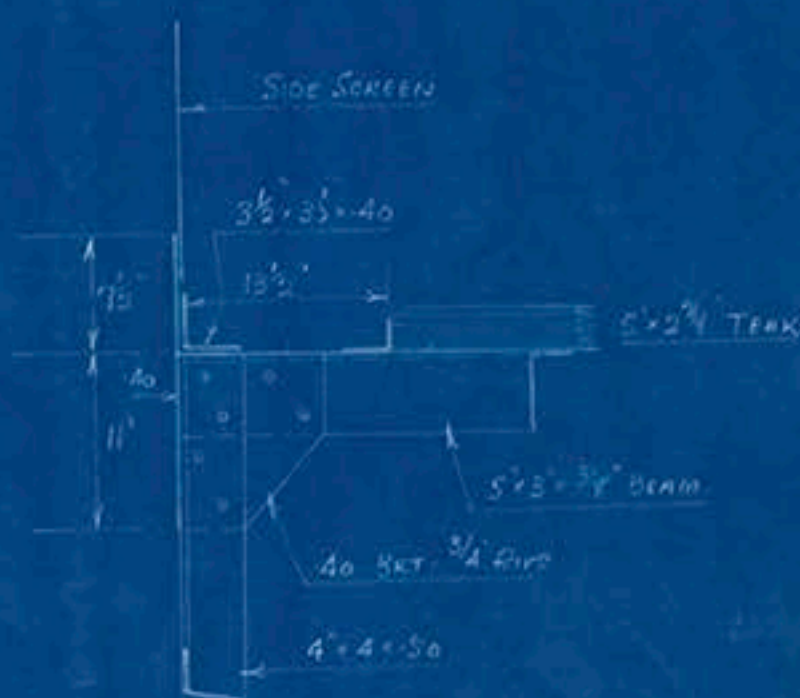
JOB N^o 38/102

EXTENSION TO E' DECK

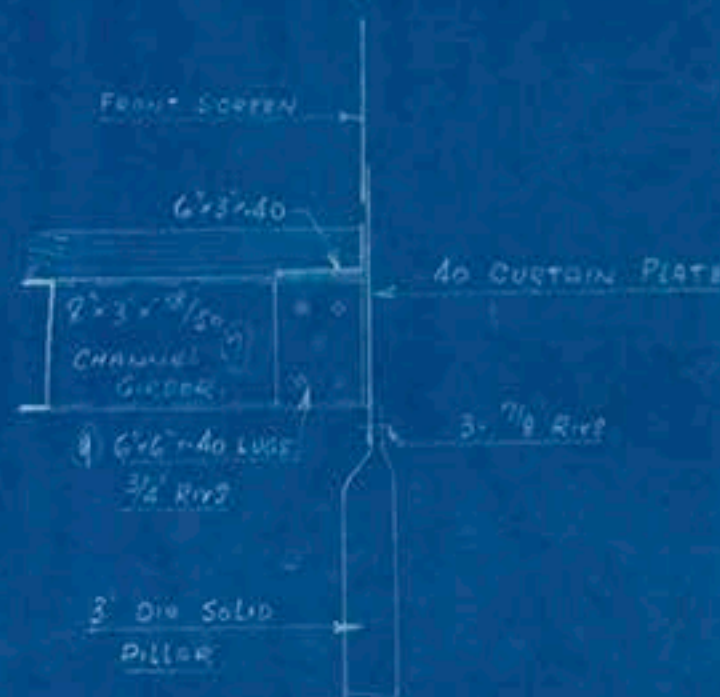
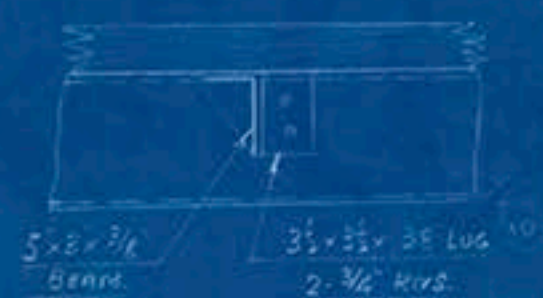
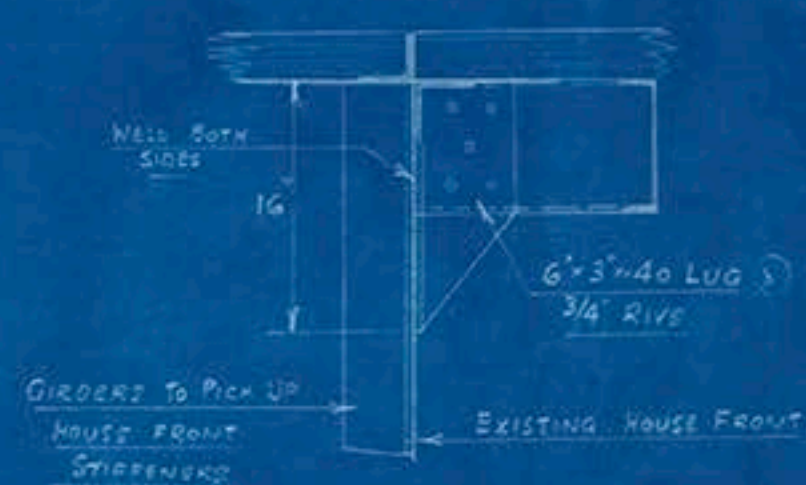
SCALE: $\frac{1}{4}$ " = 1 FOOT DETAILS 1" = 1 FOOT

LLOYDS
STAMP
27th Oct 1938

SECTION AT BEAM 160



GIRDER DETAILS

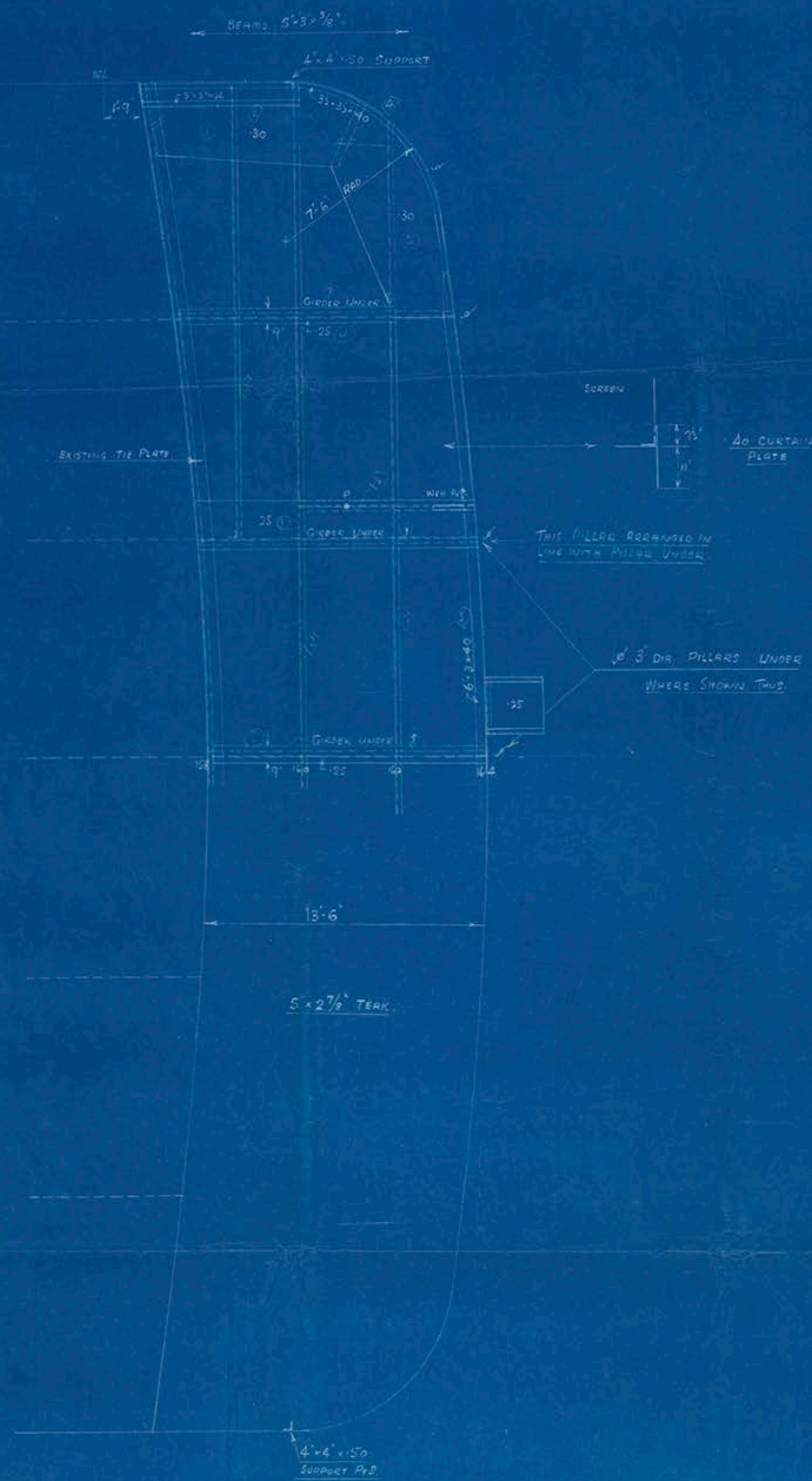
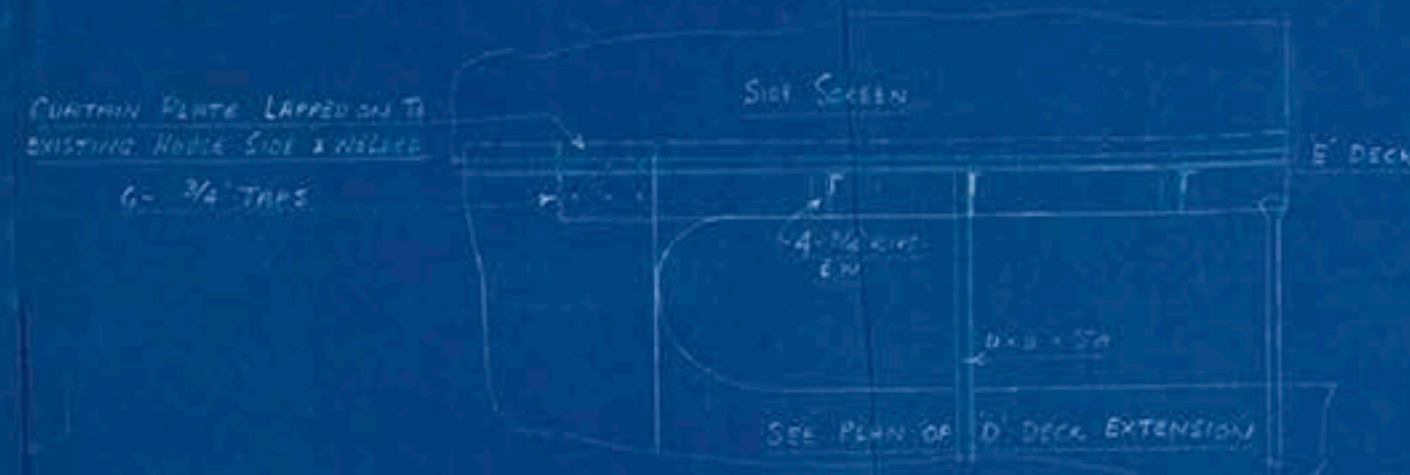


ELEVATION SHOWING METHOD OF REMOVING EXISTING SCREEN



RIVETING

GENERALLY AS EXISTING		
RIVETS IN BEAMS TO STRINGERS	$\frac{5}{8}$ " DIA	7 DIAS.
" " BUTTS OF "	$\frac{5}{8}$ "	4 "
" " STRINGER ANGLE (TO DECK)	$\frac{5}{8}$ "	4 1/2 "
" " " (TO CURTAIN PL)	$\frac{3}{4}$ "	4 1/2 "
GIRDERS	$\frac{5}{8}$ "	5 "



PALMER HEBURN CO. LTD.
DRAWING OFFICE
HEBBURN-ON-TYNE

28-10-38

Signed
J.R.C.
27-10-38

38-100-114
Foundation

copy of Lloyds approved plan received 28-10-38

"Arandora Star"
NEWCASTLE ON TYNE.

Report No. 97008

PALMERS HEBBURN CO. LTD.
DRAWING OFFICE,
HEBBURN - ON - TYNE.

Job No 38/102

"E" DECK EXTENSION.



© 2018

Lloyd's Register
Foundation