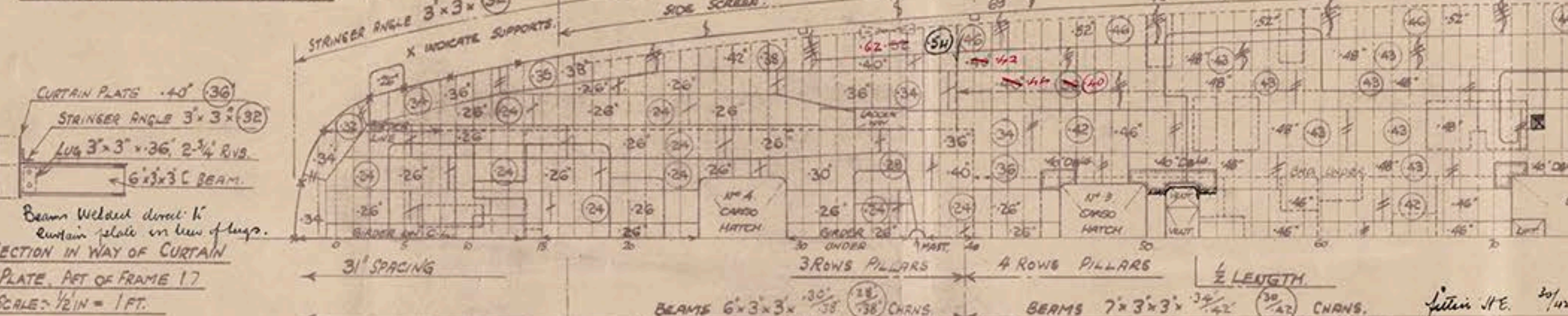
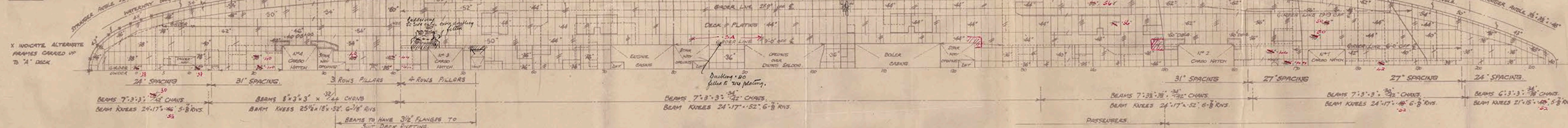


PROMENADE DECK.



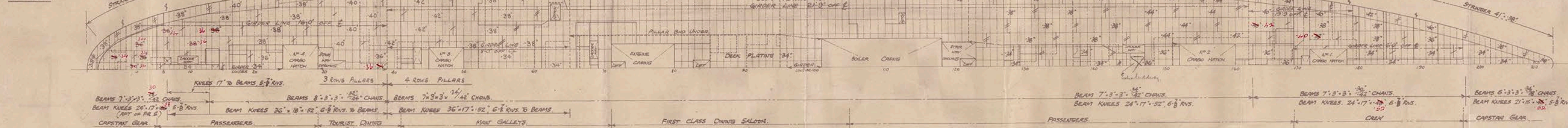
"A" DECK.

UPPER DECK.  
1ST DECK.



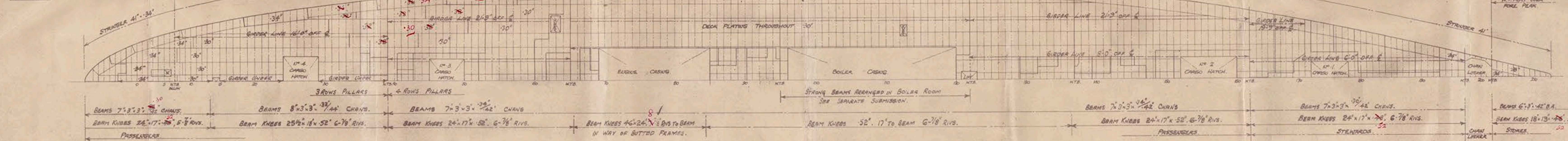
"B" DECK.

FREEBOARD & BULK DECK.  
2ND DECK.

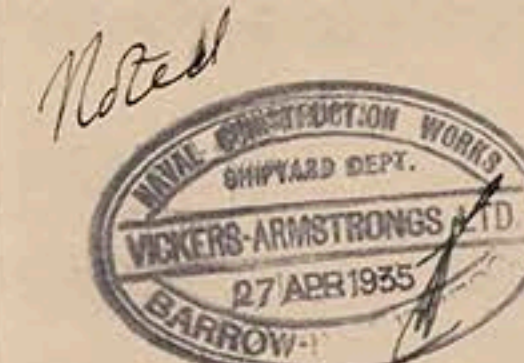
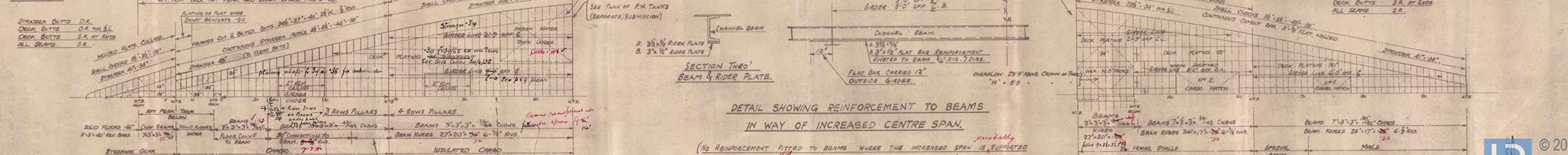


"C" DECK.

3RD DECK.



"D" DECK.



- NOTES:
1. DECKS ARRANGED FOR 4 ROWS OF PILLARS EXCEPT WHERE MARKED OTHERWISE
  2. DECK PLATING GENERALLY FLUSH. JOGGLED SEAMS AND BUTTS.
  3. HATCH END BEAMS SAME SCANTLING AS BEAMS IN VICINITY.
  4. SEE SEPARATE SUBMISSION FOR SUPERSTRUCTURES AND PILLARS AND GIRDERS.
  5. DECK PLATING UNDER STEERING GEAR, CAPSTAN MACHINERY AND WINCHES TO BE "GO" TO SUIT OWNERS' REQUIREMENTS.
  6. FIGURES ENCLOSED IN CIRCLES INDICATE H.E. THICKNESSES. H.E. MARINE STEEL 7/16".
  7. STRONG BAR BUTTS TO BE WELDED IN LIEU OF COVER ANGLES.

Subsides under deckhouse sides also as shown and  
a number of stiffeners to be substituted with  
plan of stiffeners

DETAIL SHOWING REINFORCEMENT TO BEAMS  
IN WAY OF INCREASED CENTRE SPAN.

(NO REINFORCEMENT FITTED TO BEAMS WHERE THE INCREASED SPAN IS SUPPORTED  
BY EITHER BULKHEADS OVER DECK OR UNDER DECK)



Vickers 404

Deck Plans

T.S.S. "Awakea" - Barrow Report 2619.



© 2018

Lloyd's Register  
Foundation

LR-FAF-TB29-P-21