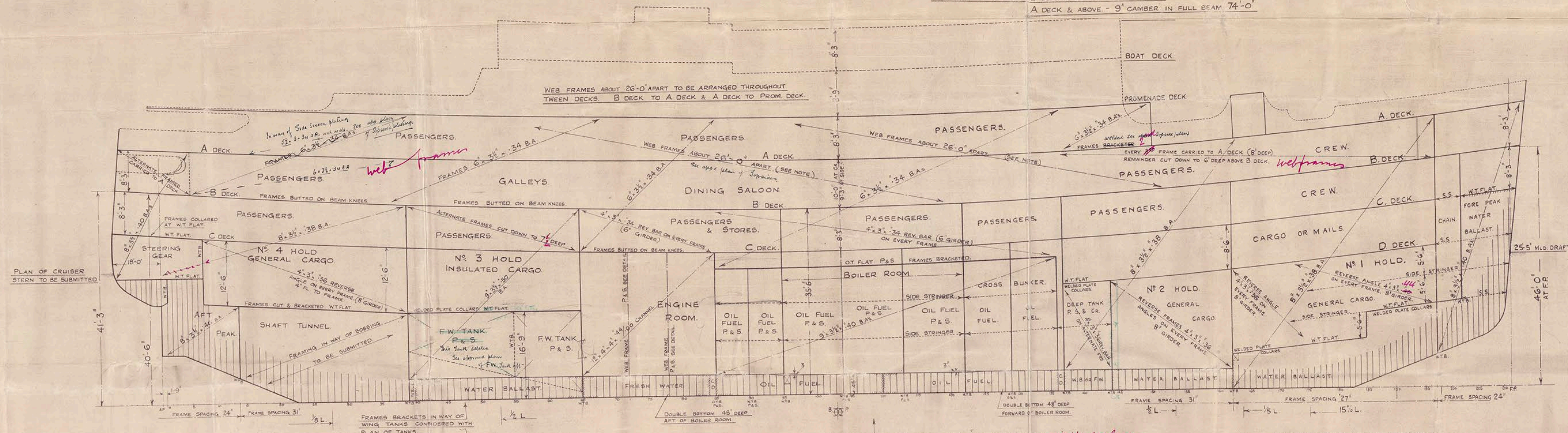


No. 707.
T.S. TURBINE STEAMER
FOR
THE UNION STEAMSHIP COMPANY OF NEW ZEALAND.
REVISED FRAMING PROFILE.

ALL BULB ANGLES AND CHANNELS ARE NEW BRITISH STANDARD SECTIONS.
WEB FRAMES FITTED IN WAY OF 6" B.A. FRAMES BETWEEN PROMENADE & B DECK.
SPACED TO SUIT ACCOMMODATION ARRANGEMENTS TO BE SUBMITTED for opening out plan of Shipyard Planning.
FRAMES AND REVERSE FRAMES JOGGED.

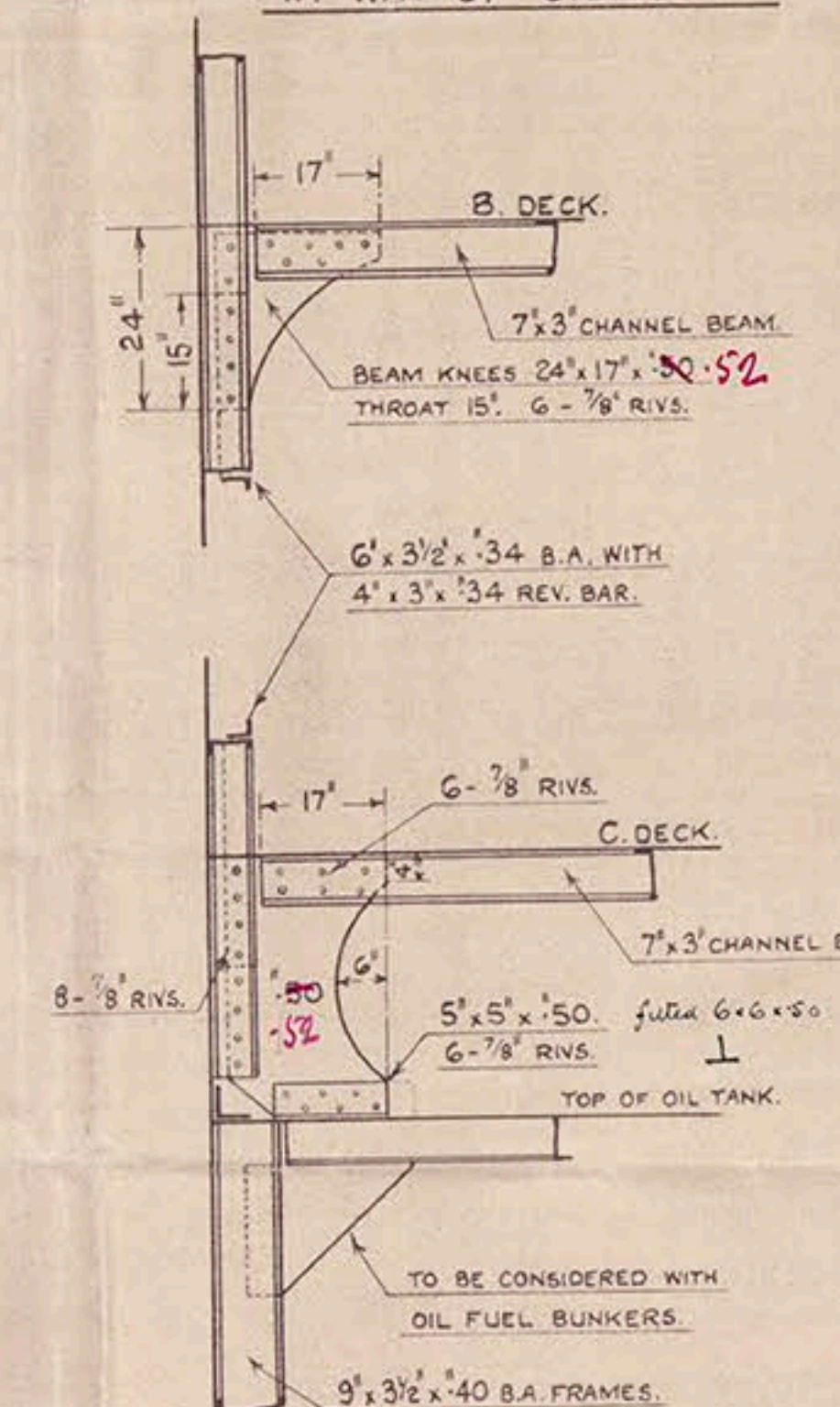
LONGITUDINAL $\frac{1}{16}$ INCH = ONE FOOT.
VERTICAL $\frac{1}{8}$ INCH = ONE FOOT.
DETAILS $\frac{1}{2}$ INCH = ONE FOOT.

CAMBER OF DECKS. B DECK & BELOW - NO CAMBER.
A DECK & ABOVE - 9" CAMBER IN FULL BEAM 74'-0".

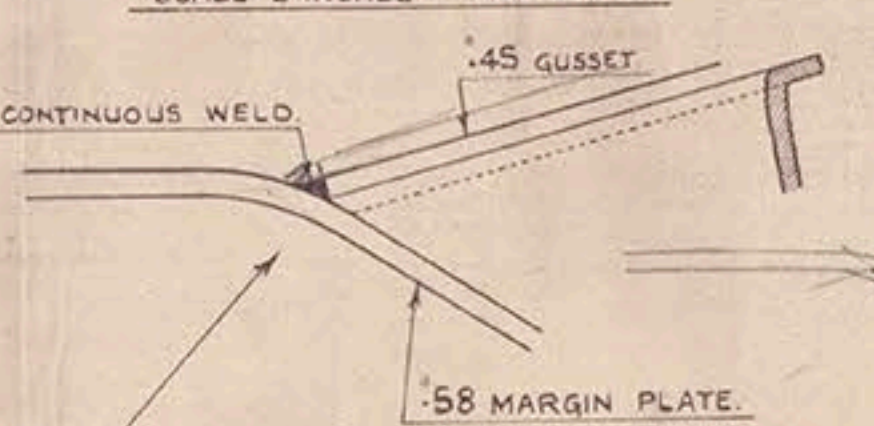


PLAN OF CRUISER
STERN TO BE SUBMITTED

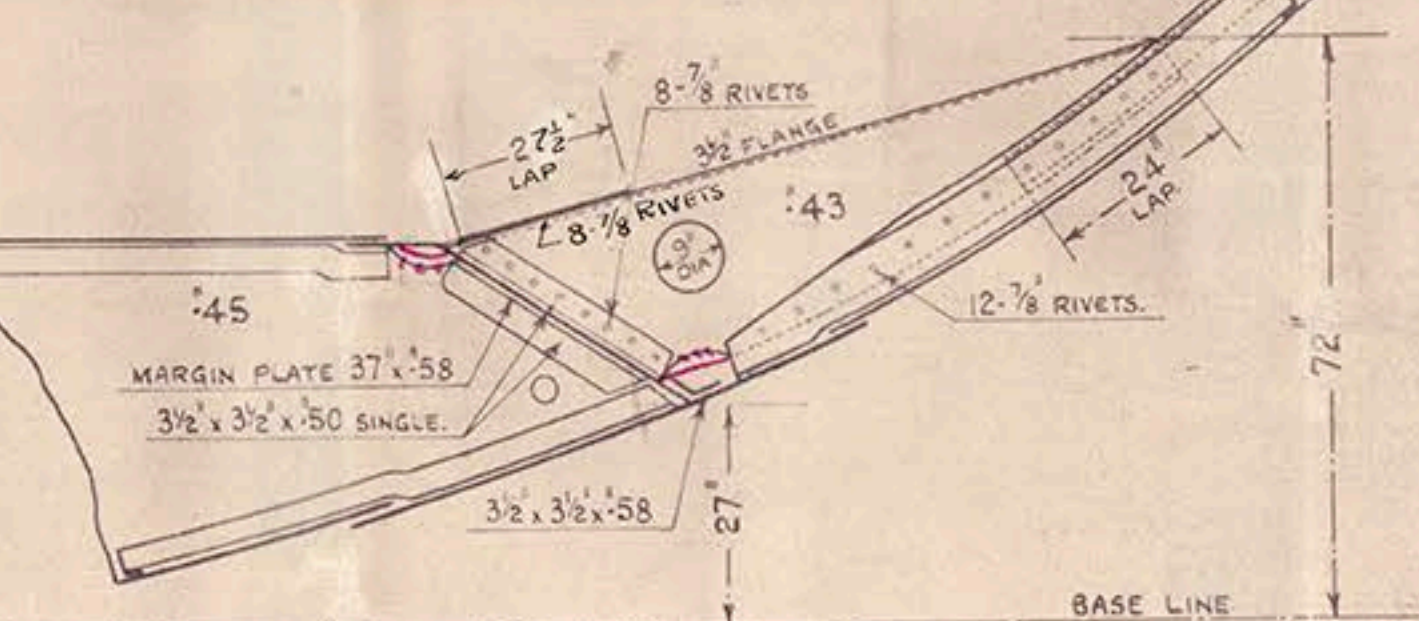
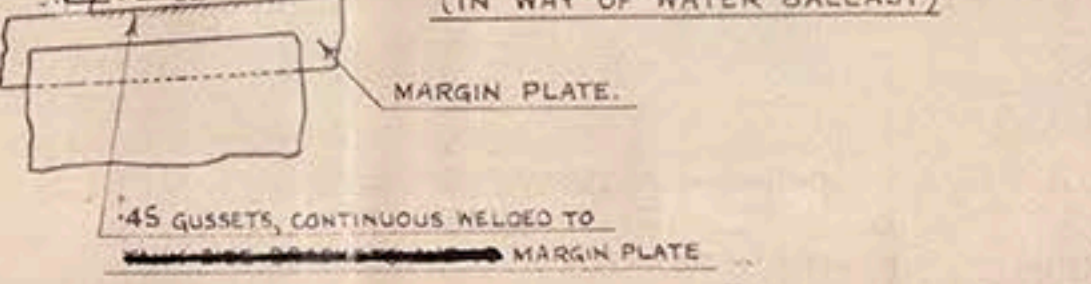
BEAM KNEES & BRACKETS
IN WAY OF OIL TANKS.



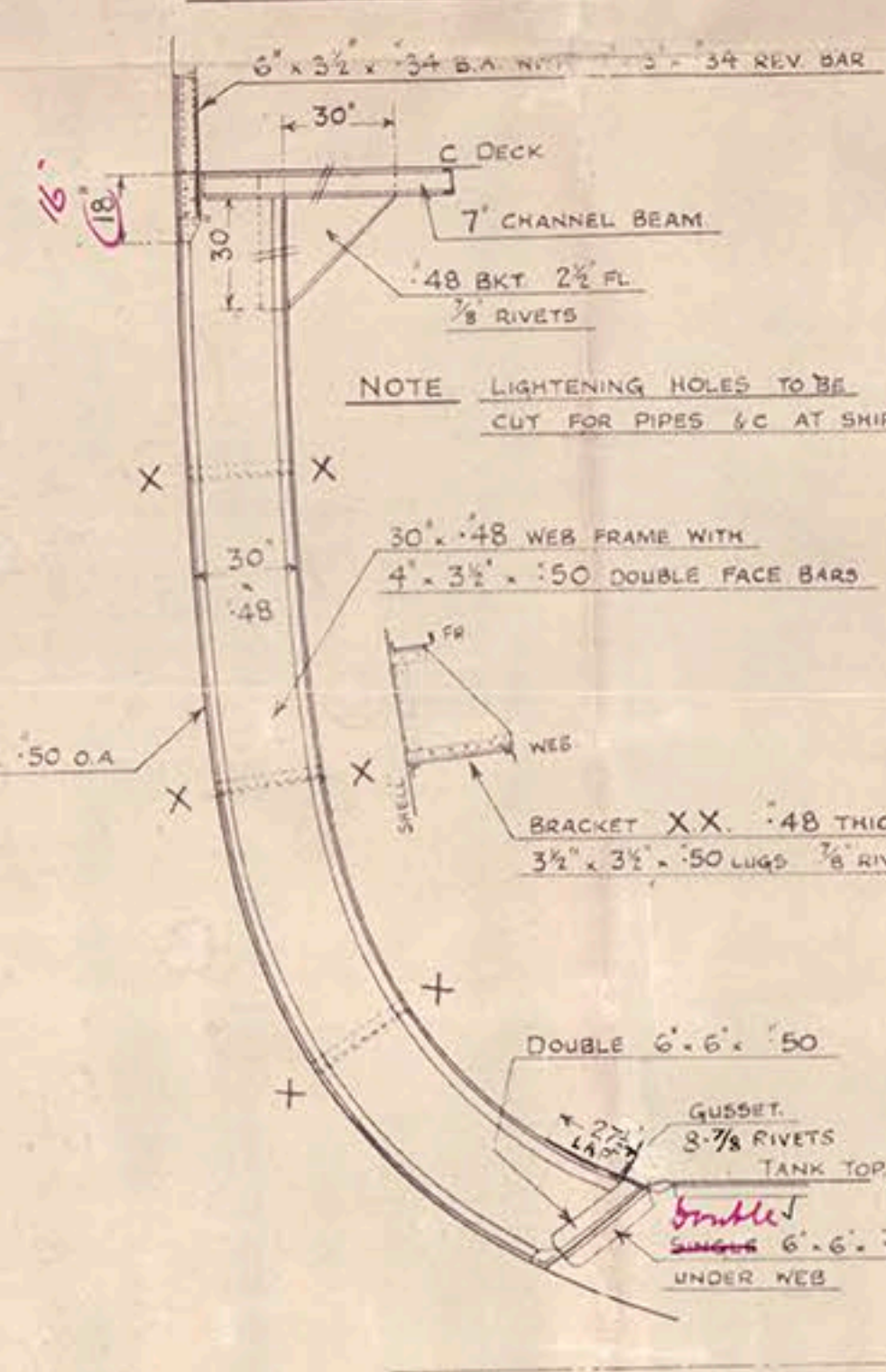
SECTION SHOWING WELDING OF GUSSET
TO MARGIN PLATE.
SCALE 3 INCHES = ONE FOOT.



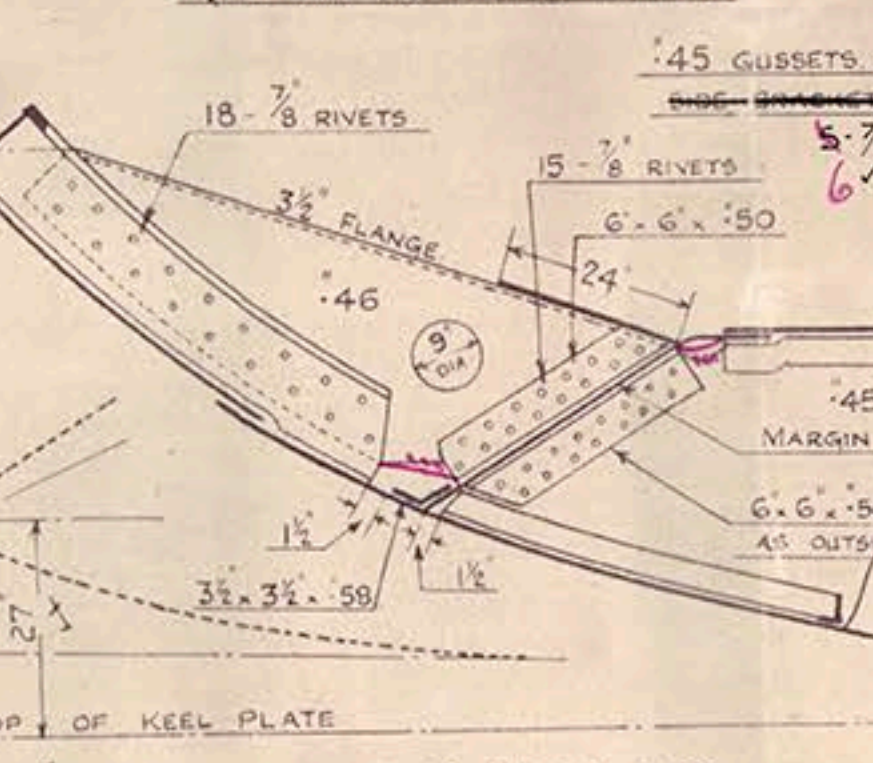
TANK SIDE BRACKETS IN No. 2 HOLD.
FRAMES 145-161.
(IN WAY OF WATER BALLAST)



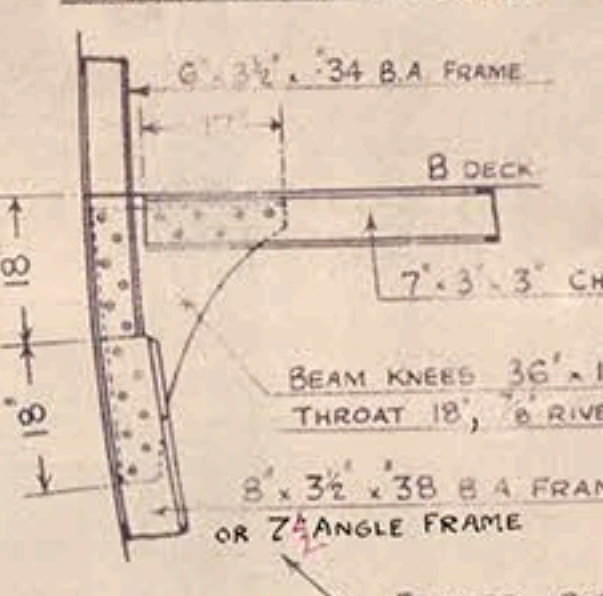
WEB FRAMES IN ENGINE ROOM
FRAMES 72 & 78 P&S
SCALE 1/2 INCH = ONE FOOT.



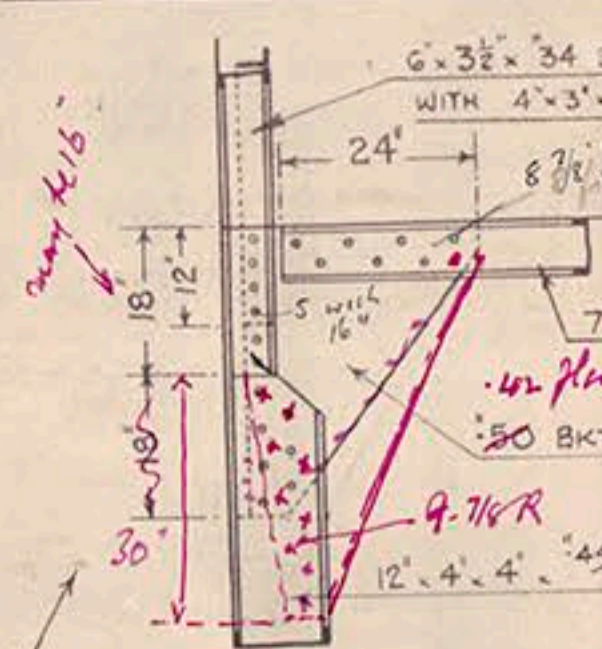
TANK SIDE BRACKETS IN ENGINE ROOM
FRAMES 66 TO 84
(IN WAY OF FRESH WATER)



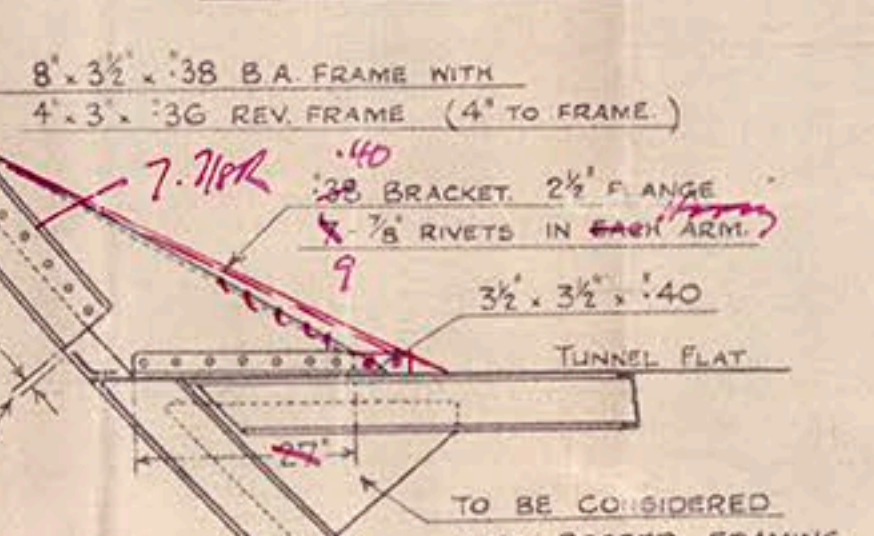
DEEP BEAM KNEES, B DECK
FRAMES 5 TO 65
DRAWN FOR 7" E BEAM.



DEEP BEAM KNEES IN E.R.



FRAME BRACKETS IN No. 4 HOLD
TO TUNNEL FLAT



Dickers . Armstrongs Ltd

No. 707

Draming Profit (Revised)

T.S.S. "Awake" - Barrow Report 2619.

WS 155



© 2018

Lloyd's Register
Foundation

LR-FAP-1364