

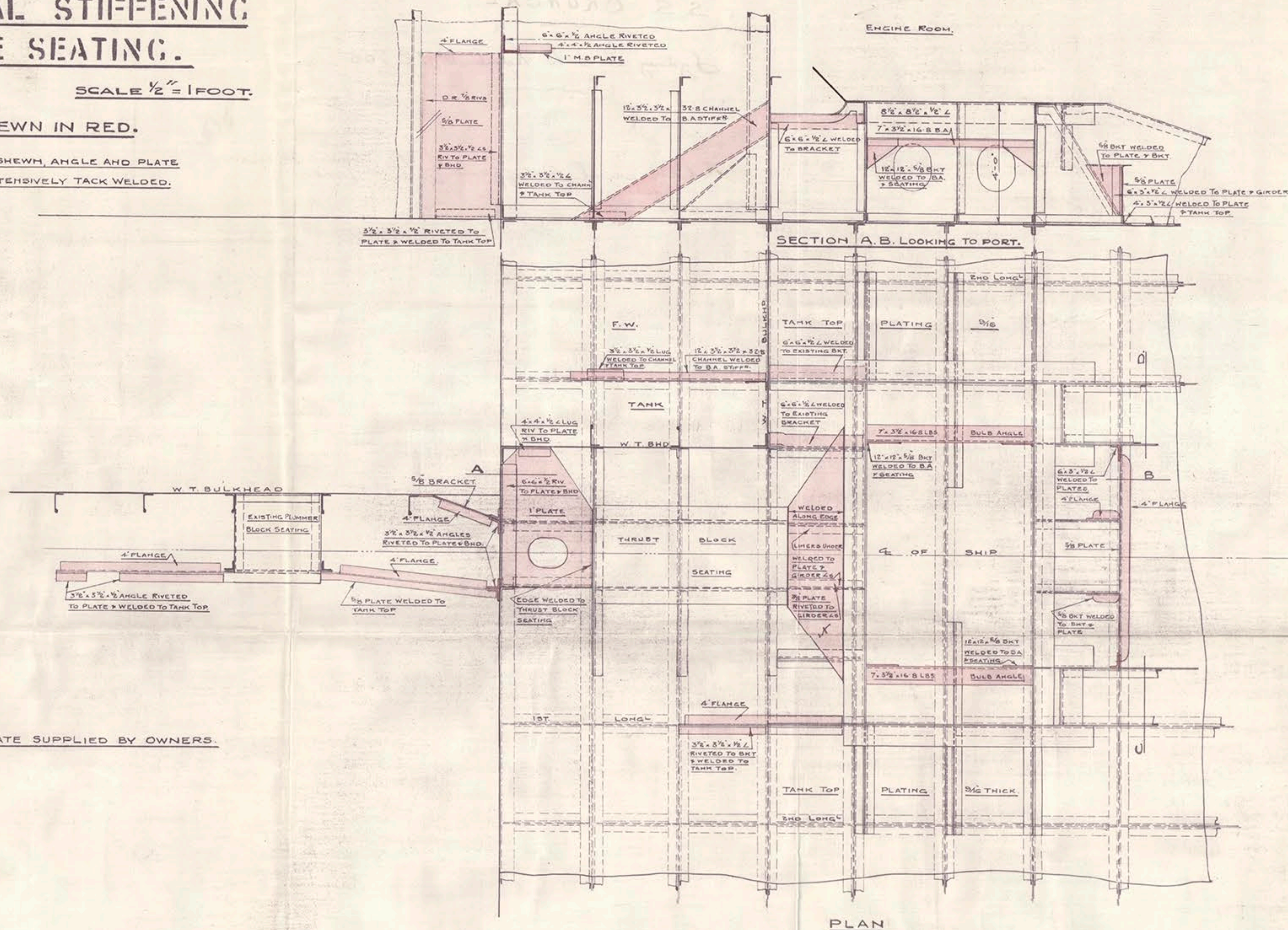
# S S "ORUNGA".

## ADDITIONAL STIFFENING TO ENGINE SEATING.

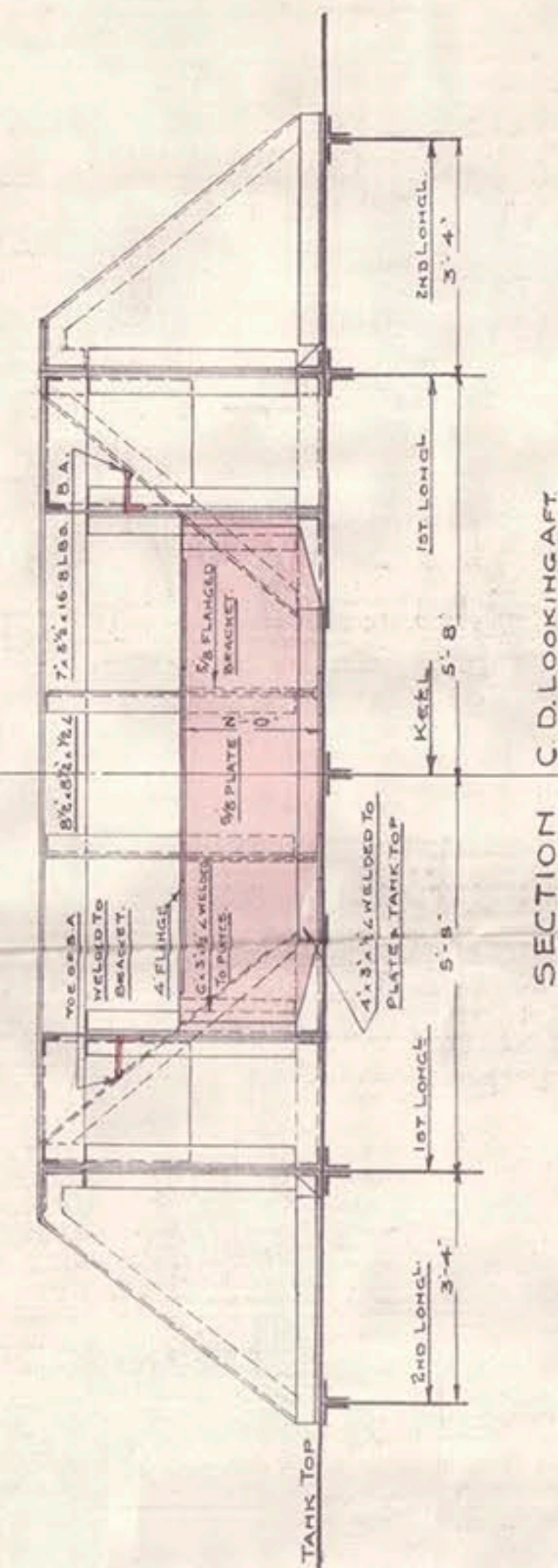
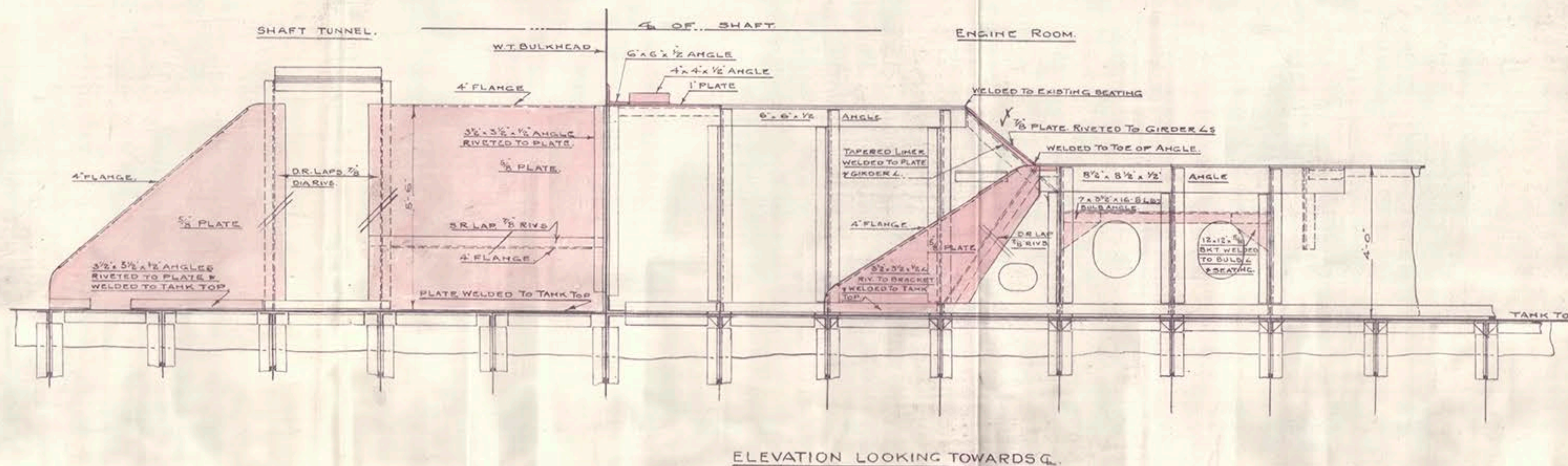
SCALE  $\frac{1}{2}'' = 1 \text{ FOOT.}$

NEW WORK SHEWN IN RED.

IN ADDITION TO WORK SHEWN, ANGLE AND PLATE  
CONNECTIONS WERE EXTENSIVELY TACK WELDED.



$\frac{1}{8}$  PLATE SUPPLIED BY OWNERS.



SECTION C.D. LOOKING AFT.

ELEVATION LOOKING TOWARDS G.



S. S. ORUNGAL

Sydney N. S. W. Report N° 12. 705

Additional stopping to engine  
seating.



© 2018

Lloyd's Register  
Foundation