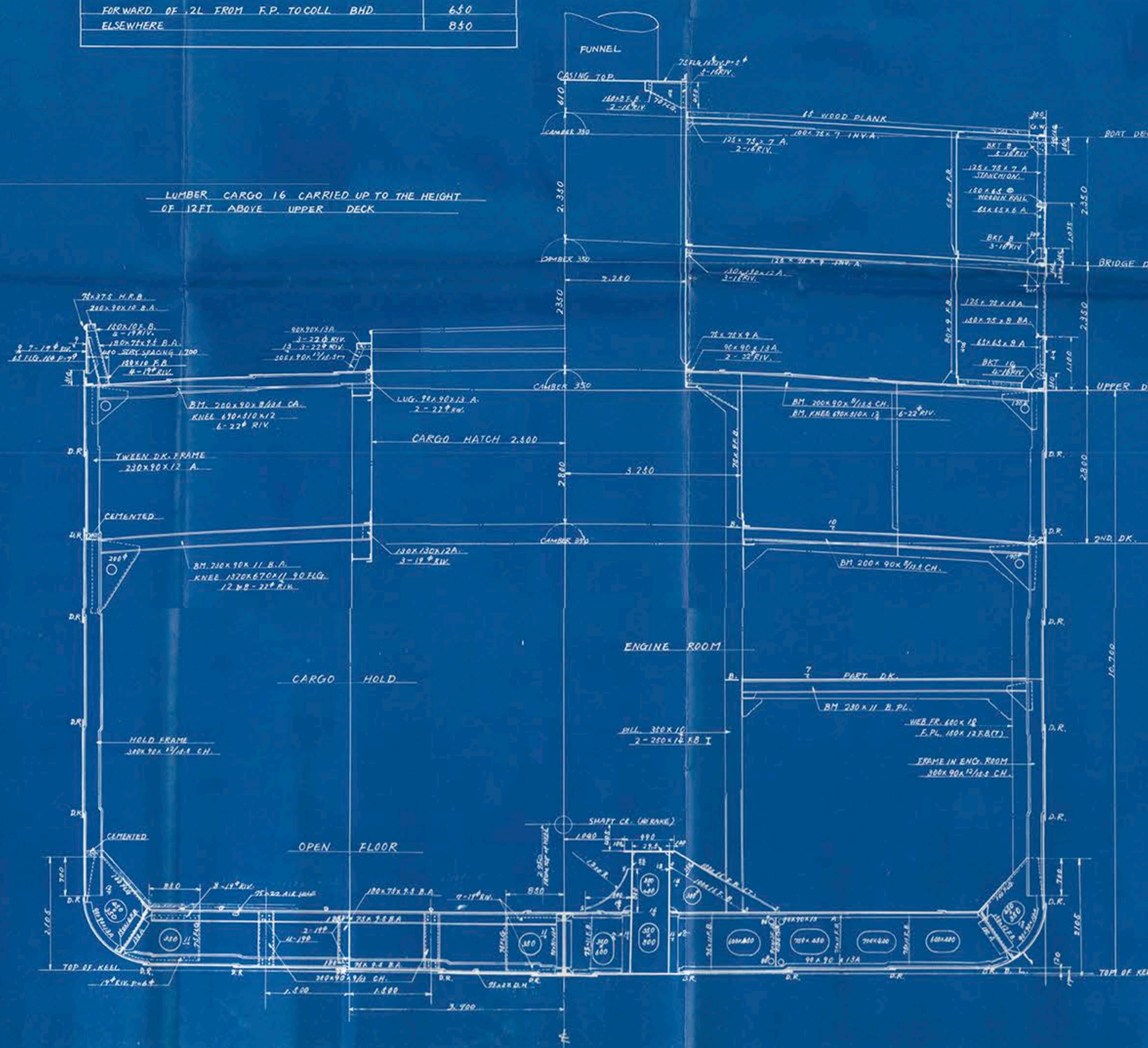


M.S. HAKUBASAN MARU. MIDSHIP SECTION.

CARGO BOAT (SINGLE SCREW)
LLOYD'S CLASS + 100A1
NIPPONKAIJI KYOKAI'S CLASS NS*

N.B. SCANTLINGS ARE GIVEN BY LLOYD'S 1947-48 RULES & NOTICE NO 1879
SCANTLINGS WITHOUT UNITS ARE IN M/M.

FRAME	SPACE
BOTH PEAKS	600
FORWARD OF 2L FROM F.P. TO COLL. BHD	650
ELSEWHERE	850



PRINCIPAL DIMENSIONS			
LENGTH OVERALL	L.	131.63 M	431.85 FT.
LENGTH P.P.	L.	122.0 M	400.26 FT.
LENGTH P.P. FOR SCANTLING	L.	122.288 M	401.20 FT.
BREADTH MOULDED	B.	17.6 M	57.76 FT.
DEPTH MOULDED TO UPPER DECK	D.	10.7 M	35.10 FT.
LOADED DRAUGHT MOULDED	d.	7.995 M	26.23 FT.

SCANTLING NUMERALS			
1ST LONGITUDINAL NUMERALS	L x D.	130.8	10.084
2ND	L x (B+D)	3.461	37.250
PROPORTION TO UPPER DECK	1/0	11.43	11.43
FRAMING DEPTH	h	6.78 M	22.24 FT.

EQUIPMENT NUMBER			
L x (B+D)	122 x (17.6+10.7)	3.461	37.250
FILE	9.30 x 22 x 3/4	1.5	1.65
UPPER DECK HOUSE	34.8 x 23.5 x 1/2	4.1	4.41
BRIDGE DECK HOUSE	31.4 x 23.5 x 1/2	3.7	3.98
BOAT DECK HOUSE	7.65 x 23.5 x 1/2	9	9.7
SUM		3.563	38.361

EQUIPMENTS			
BOWER ANCHOR STOCKLESS	3	10 ⁶ SLS (COLLECTIVE)	
STREAM ANCHOR ORDNALTY (EX STOCK)	1	1. 650	
STUD CHAIN CABLE (CAST STEEL)	1	52# - 550 M	
STEEL WIRE ROPE FOR STREAM ANCHOR	1	40# - 230 M	
TWINE STEEL WIRE ROPE (SPECIAL)	1	38# - 220 M	
HAWERS AND WARPS (MANILA)	2	60# - 165 M	
HAWERS AND WARPS STEEL WIRE ROPE	2	22# - 165 M	

SPECIALLY INCREASED IN NUMBERS AND SIZE BY OWNER'S REQUIREMENT

FORGING AND CASTING			
STEM "U" FORM FURNACED PLATE			
STERN FRAME CAST STEEL			
DETAILS AS PER PLAN			

SHELL PLATING			
FLAT PLATE KEEL	4 L 80	130 FROM ENDS	
BOTTOM PLATE (A-E)	170 x 20	1300 x 20	
SIDE PLATE (E-L)	17	12	
SHEER STRAKE (S)	16	12	
FILE SIDE PLATE	1600 x 20	12	
PLATES CONNECTED TO STERN FRAME		17	
* FINISHED THICKNESS WHEN REQUIRED TO BE FURNACED			

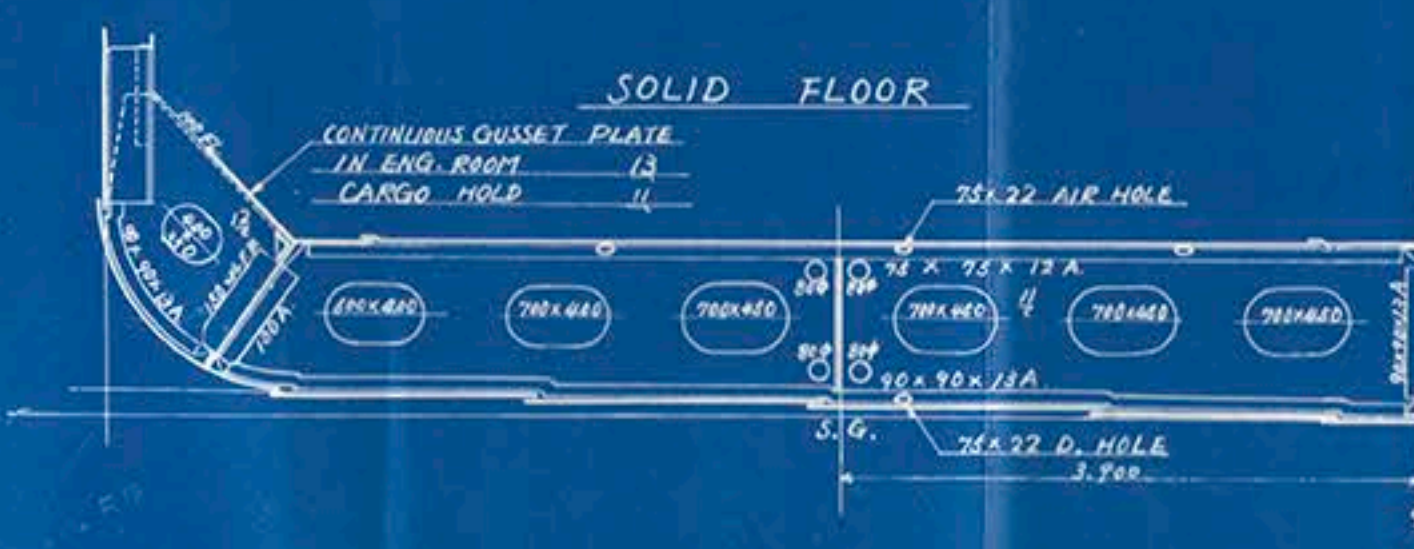
RIDGE KEEL			
LENGTH	32" 300	AMIDSHIPS (E.N. 17-85)	
PLATE	280 x 12	WITH 50X12 F.B. WELDED	
CONNECTING TO SHELL	100 x 12 F.B.		
DEPTH OF KEEL	300		

DOUBLE BOTTOM					
	DATE	HOLD	ENGINE SPACE	BOILER SPACE	REMARK
CONVEYER ORDER	KEEL ANGLE	1/120 x 10/12	1/4	1/8	
	TOP ANGLE	100 x 100 x 1/2	100 x 100 x 1/2	100 x 100 x 1/2	
	VERT. ANGLE	90 x 90 x 1/2	90 x 90 x 1/2	90 x 90 x 1/2	
	GINDER PLATE	10	11	13	
SIDE ORDER	BOTTOM ANGLE	90 x 90 x 1/2	90 x 90 x 1/2	90 x 90 x 1/2	
	TOP ANGLE	70 x 70 x 1/2	70 x 70 x 1/2	70 x 70 x 1/2	
	VERT. ANGLE	90 x 12 F.B.	90 x 12 F.B.	90 x 12 F.B.	
	FLOOR PLATE	11	11	13	
SOLID FLOOR	FRAME	100 x 100 x 1/2	100 x 100 x 1/2	100 x 100 x 1/2	
	REV. FRAME	100 x 100 x 1/2	100 x 100 x 1/2	100 x 100 x 1/2	
	STIFFENER	11	11	13	
	BRACKET PLATE	11	11	13	
OPEN FLOOR	FRAME	100 x 100 x 1/2	100 x 100 x 1/2	100 x 100 x 1/2	
	REV. FRAME	100 x 100 x 1/2	100 x 100 x 1/2	100 x 100 x 1/2	
	STIFFENER	11	11	13	
	BRACKET PLATE	11	11	13	
INNER BOTTOM	FRAME	100 x 100 x 1/2	100 x 100 x 1/2	100 x 100 x 1/2	
	REV. FRAME	100 x 100 x 1/2	100 x 100 x 1/2	100 x 100 x 1/2	
	STIFFENER	11	11	13	
	BRACKET PLATE	11	11	13	
FLOOR	FRAME	100 x 100 x 1/2	100 x 100 x 1/2	100 x 100 x 1/2	
	REV. FRAME	100 x 100 x 1/2	100 x 100 x 1/2	100 x 100 x 1/2	
	STIFFENER	11	11	13	
	BRACKET PLATE	11	11	13	

STRENGTHENING OF BOTTOM FORWARD FROM FORWARD OF 1/4 L.M. TO COLLISION BMD TWO COMPLETE ROW OF RIVETS ON FRAMES 100 x 100 x 1/2 A. FROM MARGIN PLATE TO MARGIN PLATE INTERCOSTAL SIDE GIRDERS ARE TO BE FITTED NOT MORE THAN 2150 APART & HALF HEIGHT GIRDERS BETWEEN THEM TO BE EXTENDED AS FAR FORWARD AS PRACTICABLE. BOTTOM SHELL PLATE FORWARD OF 1/4 L.M. 19 BOTTOM SHELL PLATE FORWARD OF 1/4 L.M. 18

TANK SIDE BRACKET & GUSSET ATTACHMENT			
	CARGO HOLD	ENGINE SPACE	BOILER SPACE
TANK SIDE BKT. 1/4 WHERE T. TOP PLAT	1/4	1/4	1/4
TO FRAME 17-22 RIV.	17-22 RIV.	17-22 RIV.	17-22 RIV.
TO GUSSET 9-22 RIV.	9-22 RIV.	9-22 RIV.	9-22 RIV.
TO ANGLE 10-22 RIV.	10-22 RIV.	10-22 RIV.	10-22 RIV.
TO SHEER STRAKE 10-22 RIV.	10-22 RIV.	10-22 RIV.	10-22 RIV.
TO PLATE 10-22 RIV.	10-22 RIV.	10-22 RIV.	10-22 RIV.
TO KEEL 10-22 RIV.	10-22 RIV.	10-22 RIV.	10-22 RIV.
TO GUSSET 9-22 RIV.	9-22 RIV.	9-22 RIV.	9-22 RIV.
TO ANGLE 10-22 RIV.	10-22 RIV.	10-22 RIV.	10-22 RIV.
TO SHEER STRAKE 10-22 RIV.	10-22 RIV.	10-22 RIV.	10-22 RIV.
TO PLATE 10-22 RIV.	10-22 RIV.	10-22 RIV.	10-22 RIV.
TO KEEL 10-22 RIV.	10-22 RIV.	10-22 RIV.	10-22 RIV.

ENGINE & BOILER CASING			
COATING PLATE	8	8	8
ANG.	70 x 70 x 9 A.	70 x 70 x 9 A.	70 x 70 x 9 A.
CASING PLATE	7	7	7
STIFFENER	70 x 9 F.B.	70 x 9 F.B.	70 x 9 F.B.
STIFF SPACE	850	850	850
* EXCLUDING BOILER CASING IN TWEEN DECK BUNKER			



DECK	HOUSES	BRIDGE DECK	BOAT DECK
COATING PLATE	8	7	6
HOUSE	7	6	6
COATING ANGLE	130 x 9 F.B.	130 x 9 F.B.	130 x 9 F.B.
TOP	75 x 75 x 9 A.	65 x 65 x 8 A.	65 x 65 x 8 A.
STIFFENER	100 x 9 F.B.	74 x 9 F.B.	65 x 8 F.B.
SPACING OF STIFF.	ABOUT	850	

DECK	FILE DECK	BRIDGE DECK	BOAT DECK
STRINGER PLATE	8	1400 x 8	1400 x 7
ANGLE	90 x 90 x 10 A	74 x 70 x 9 A.	65 x 65 x 8 A.
G.W. WAY ANGLE	55 x 9 F.B.	55 x 9 F.B.	55 x 9 F.B.
DECK PLATE	8	7	1
WOOD PLANK		65	65
CURTAIN PLATE			300 x 8

DECK	UPPER DECK	DECK
STRINGER PLATE	1600 x 20	920 x 10
ANGLE	150 x 150 x 20 A.	90 x 90 x 13 A.
INSIDE ANGLE	75 x 10 F.B.	75 x 10 F.B.
ABREAST HATCH OPENING	18	9 (AT 15. 850)
WITHIN LINE OF OPENING	10	8
WOOD PLANK	65	
G.W. WAY ANGLE	55 x 9 F.B.	

DECK	2ND DECK	DECK
STRINGER PLATE	1600 x 10, 20	8
ANGLE	90 x 90 x 10 A.	90 x 90 x 10 A.
INSIDE ANGLE	75 x 10 F.B.	75 x 10 F.B.
ABREAST HATCH OPENING	10	8
WITHIN LINE OF OPENING	9	8
* AT BOILER OPENING SIDE		

RIVETING	NOTE	END LAP	REMARK
KEEL PLATE	SEAM	4 L 80	
BOTTOM PLATE	2 R.	3 R.	3 R.
SIDE PLATE	2 R.	3 R.	3 R.
SHEER STRAKE	1 R.	4 R.	3 R.
FILE SIDE PLATE	1 R.	3 R.	1 R.
INN. BOTTOM M.L. STRAKE	2 R.	3 R.	2 R.
" " OTHER STRAKE	2 R.	3 R.	3 R.
CENTRE GIRDER	1 R.	4 R. 3 R.	1 R.
UPR. DK. STRINGER PLATE	1 R.	4 R. 2 R.	1 R.
" " PLATE		4 R. 2 R.	1 R.
2ND. DS. STRINGER PLATE		4 R. 2 R.	1 R.
" " PLATE		4 R. 2 R.	1 R.
FILE DS. STRINGER PLATE		4 R. 2 R.	1 R.
" " PLATE		4 R. 2 R.	1 R.
BRIDGE DS. STRINGER PLATE		4 R. 2 R.	1 R.
" " PLATE		4 R. 2 R.	1 R.
BOAT DS. STRINGER PLATE		4 R. 2 R.	1 R.
" " PLATE		4 R. 2 R.	1 R.
INNER BOTTOM M.L. PLATE		4 R. 2 R.	1 R.

圖面來歷
昭和35年1月14日
三菱重工業株式會社
v12 鋼製本

白馬山丸
中央切斷
MIDSHIP SECTION
HAKUBASAN MARU

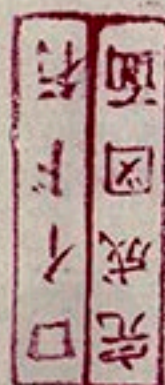
尺度 1/100





SUBJECT :- CONVERSION TO MOTORSHIP — MIDSHIP SECTION —	
Dated, 1/60	
TO ACCOMPANY KOB Rpt. No. 7464	
SS/MS "HAKUBASAN MARK"	

Kobe Rpt. No.	8-7464
Port of Survey	TAMANO
Name of Ship	HAKUBASAN MARK
Title of Officer	MIDSHIP SECTION



© 2018

Lloyd's Register
Foundation