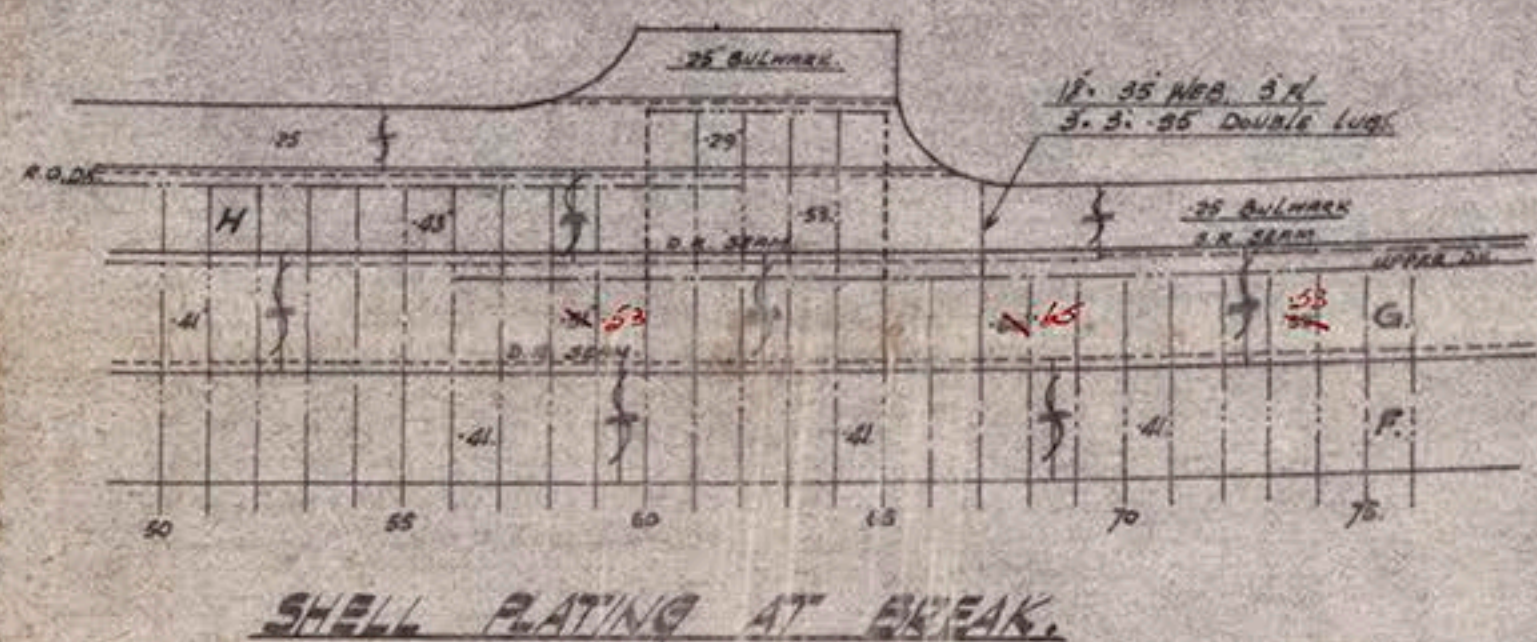


PLAN OF PROFILE & DECKS.

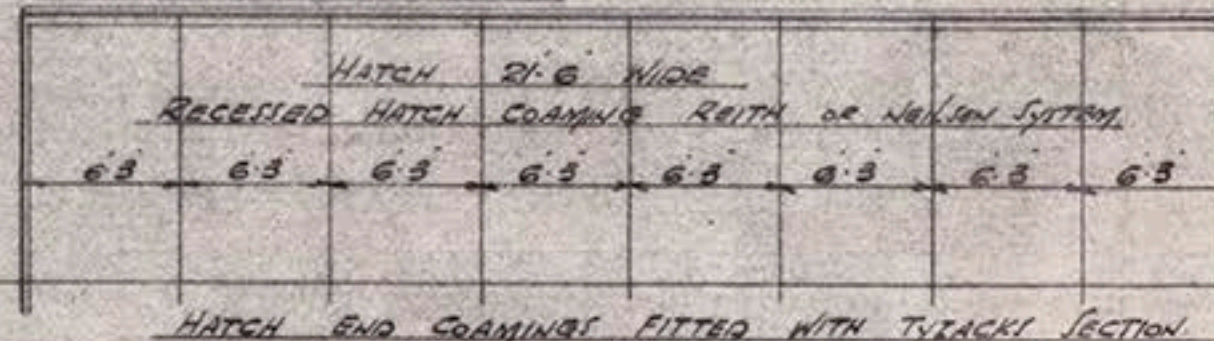
SCALE $\frac{1}{8}'' = 1 \text{ FOOT.}$

TO CLASS LLOYDS + 100. A.I.

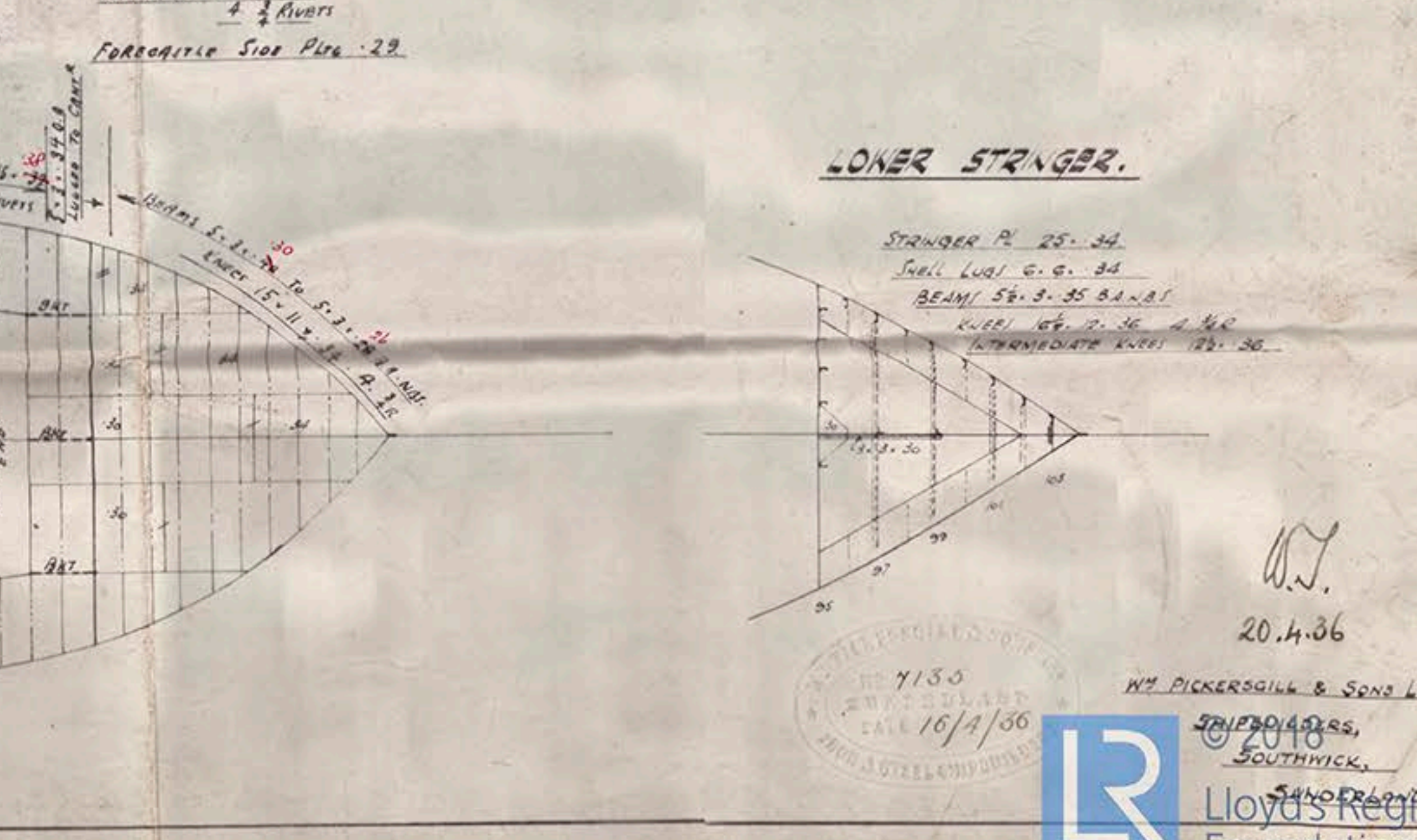
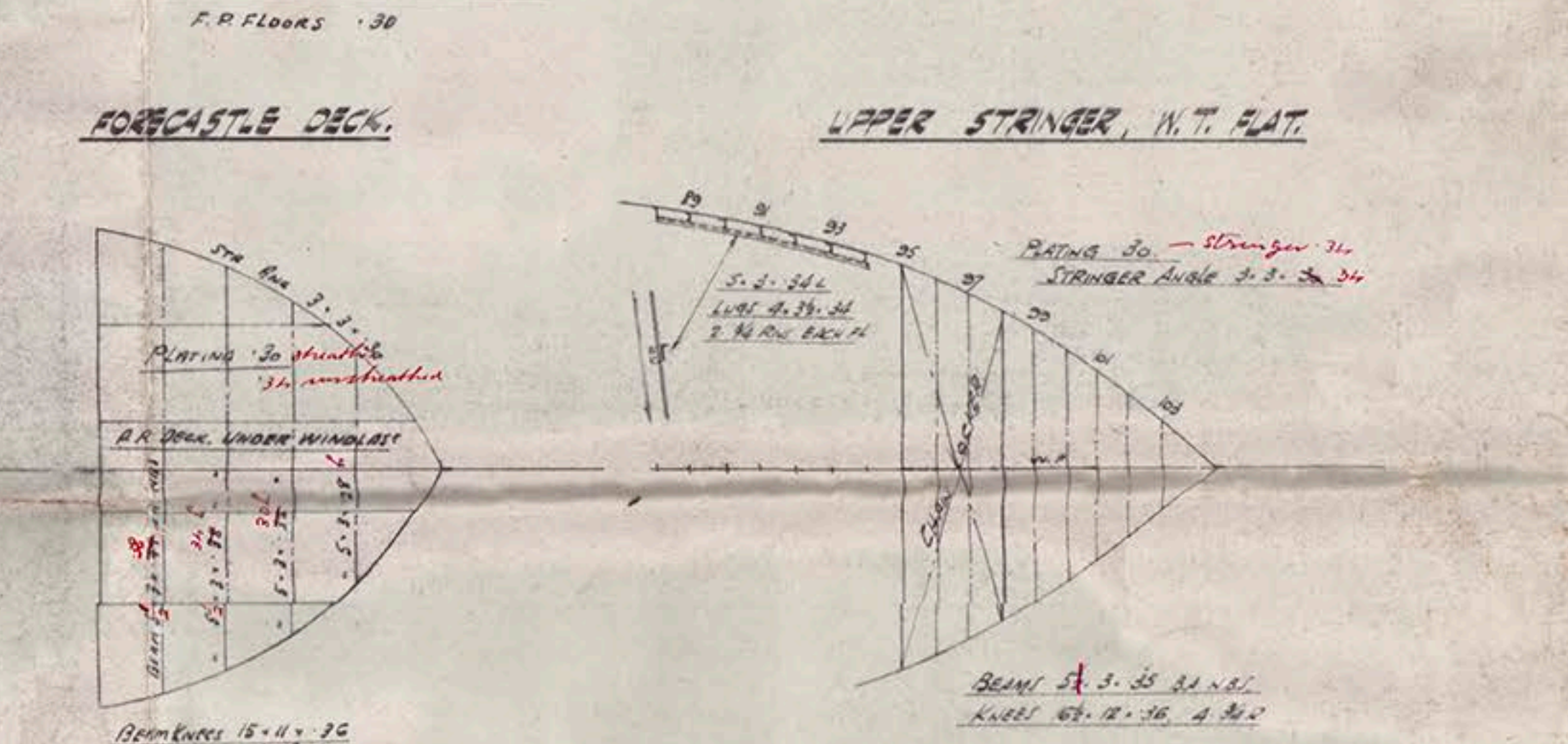
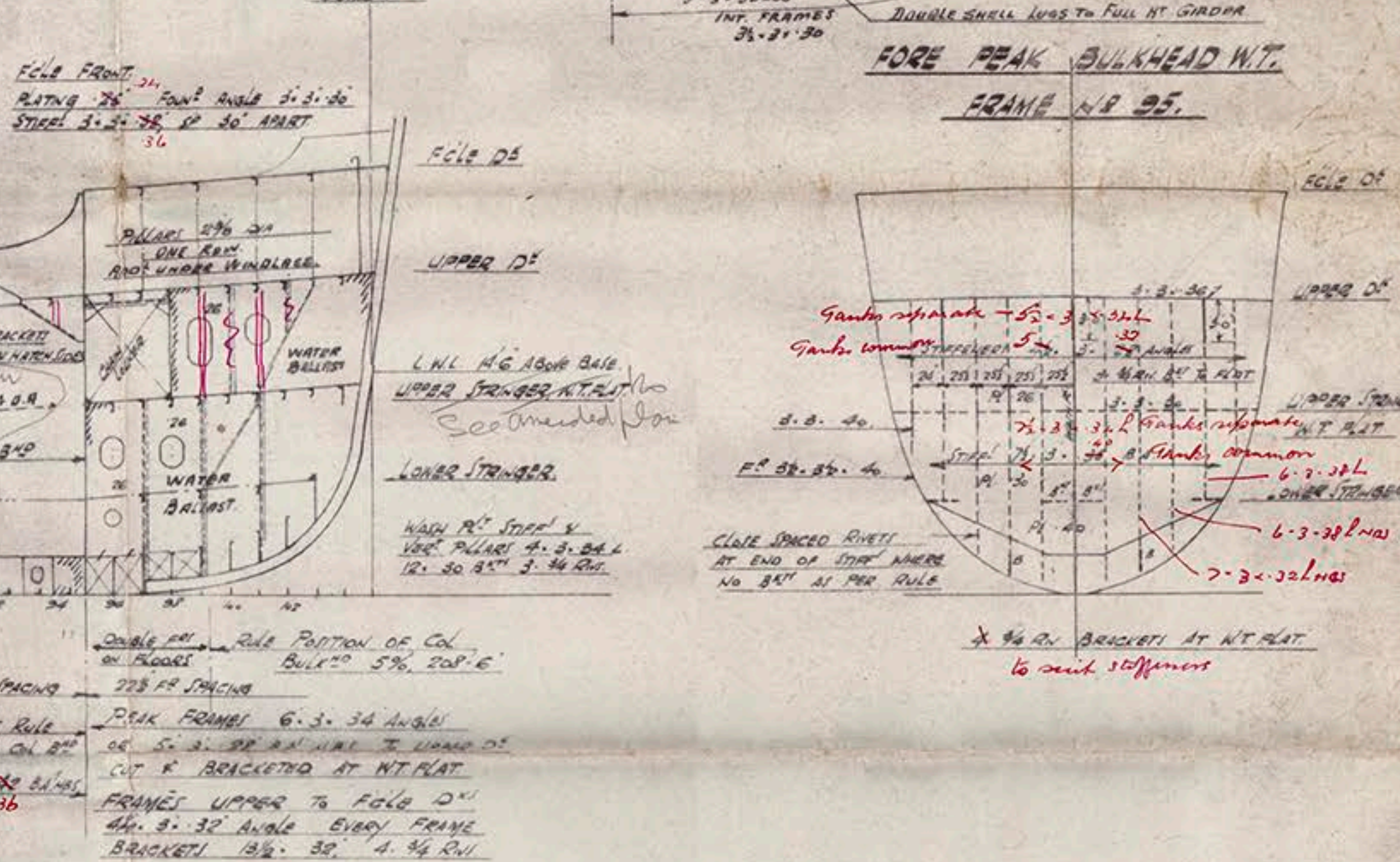
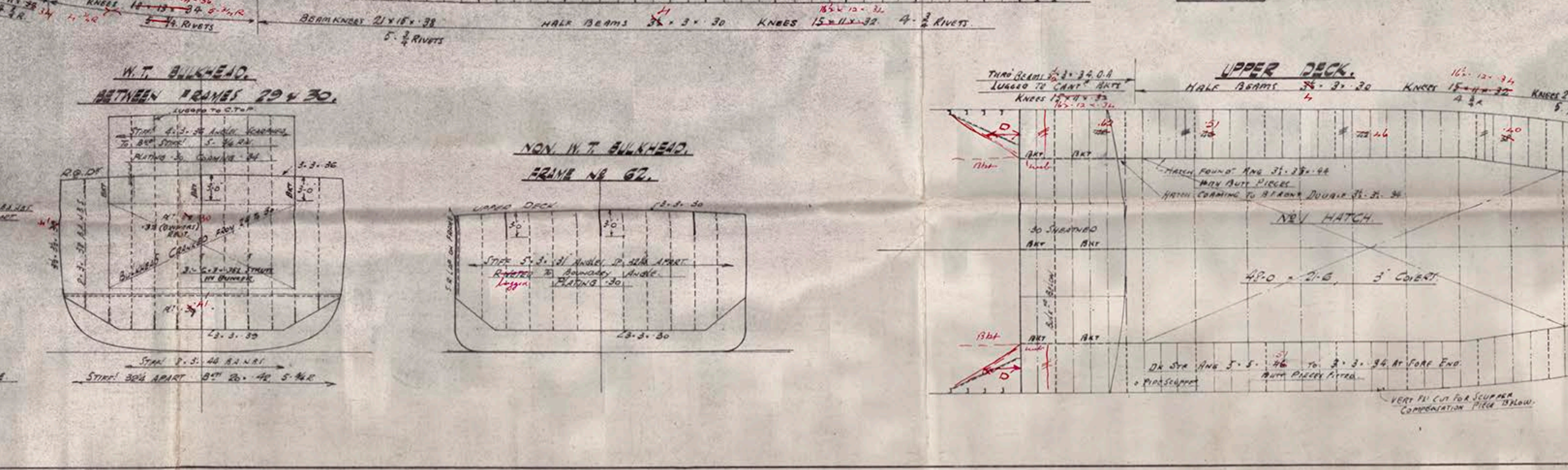
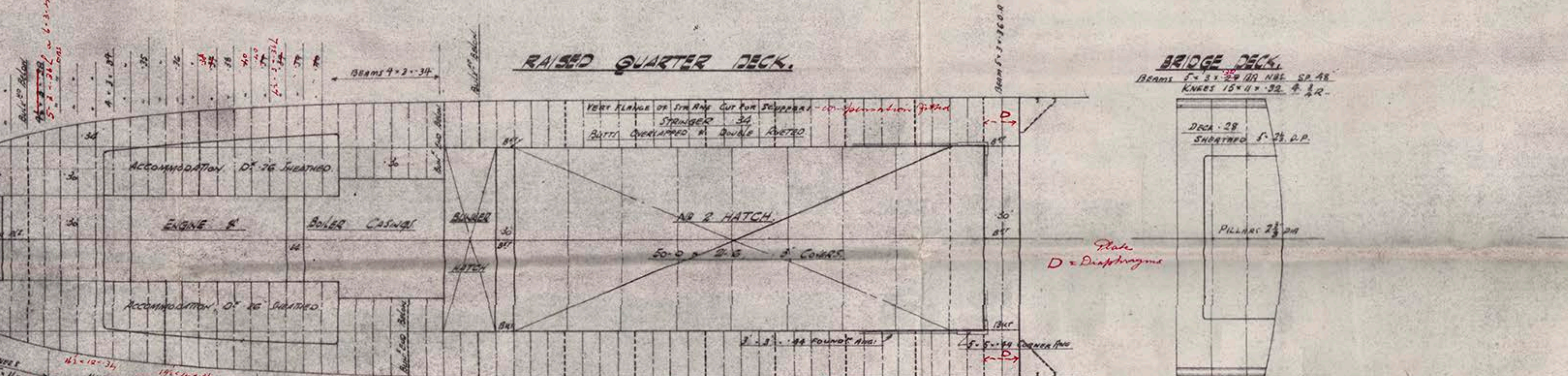
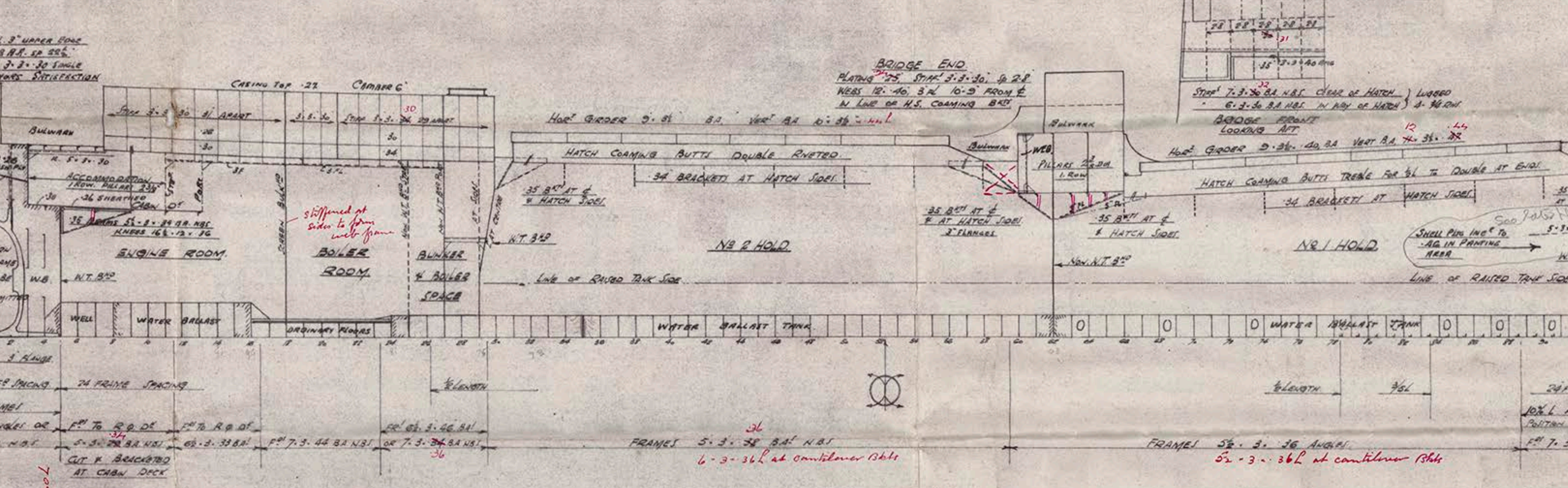
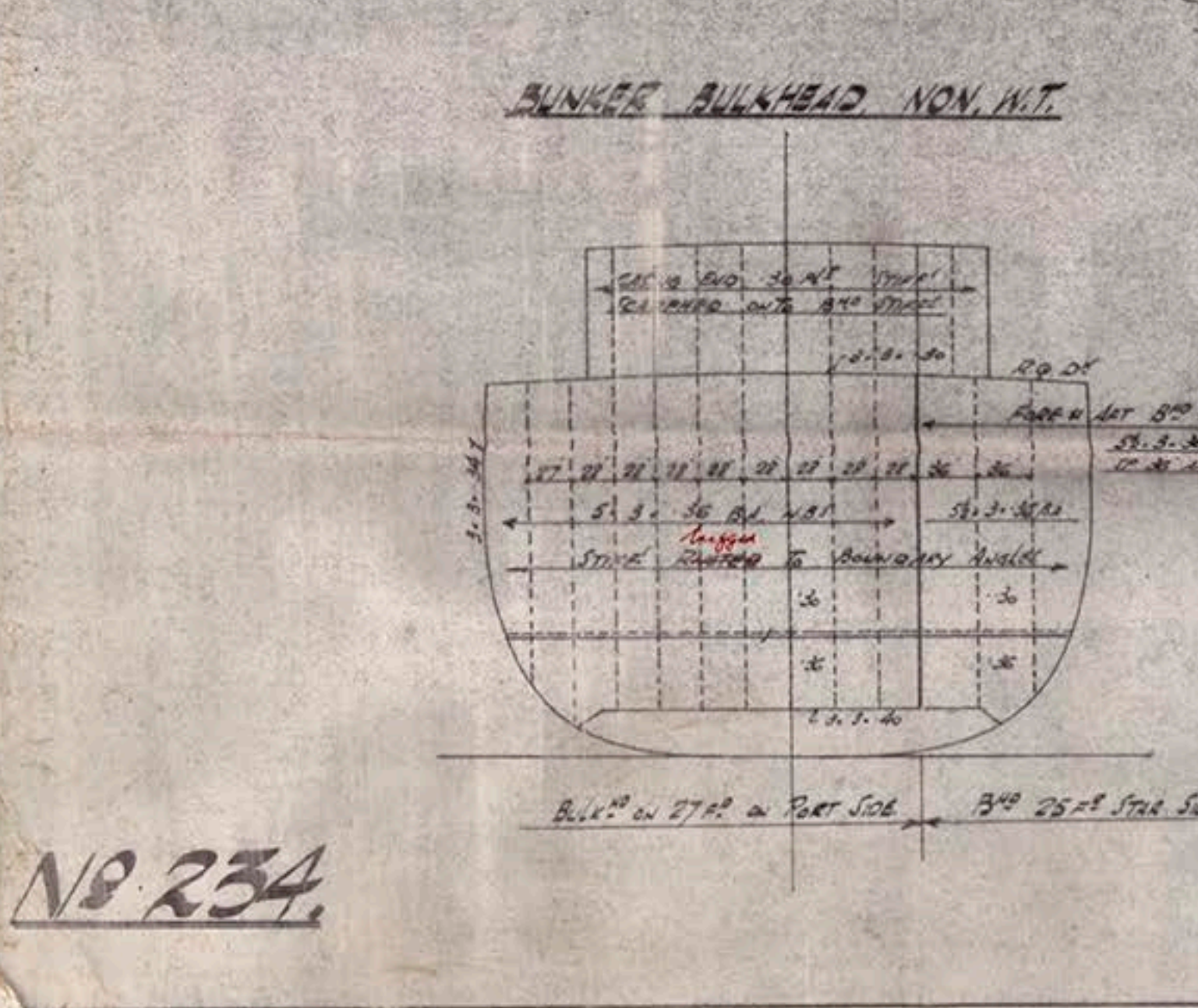
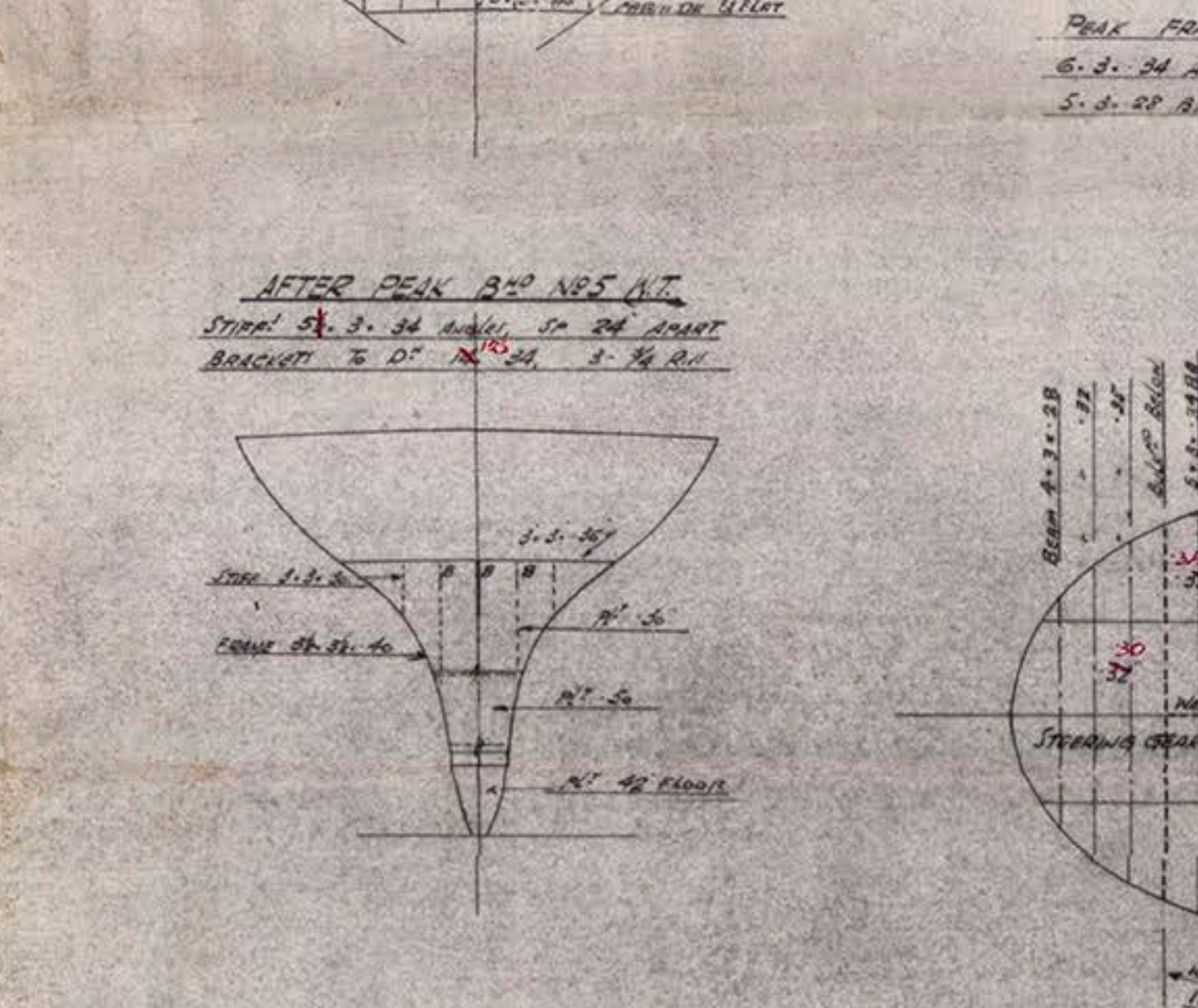
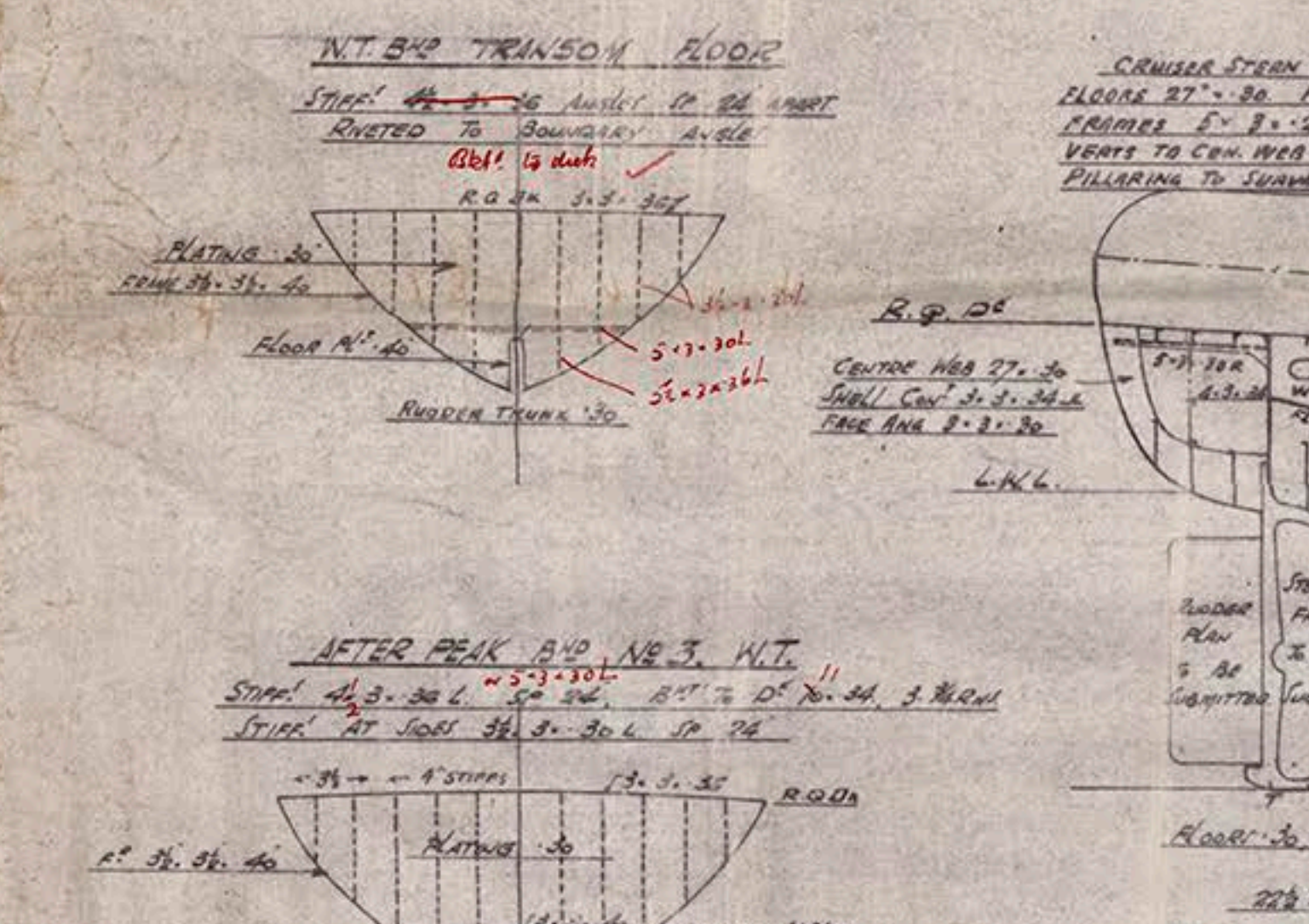
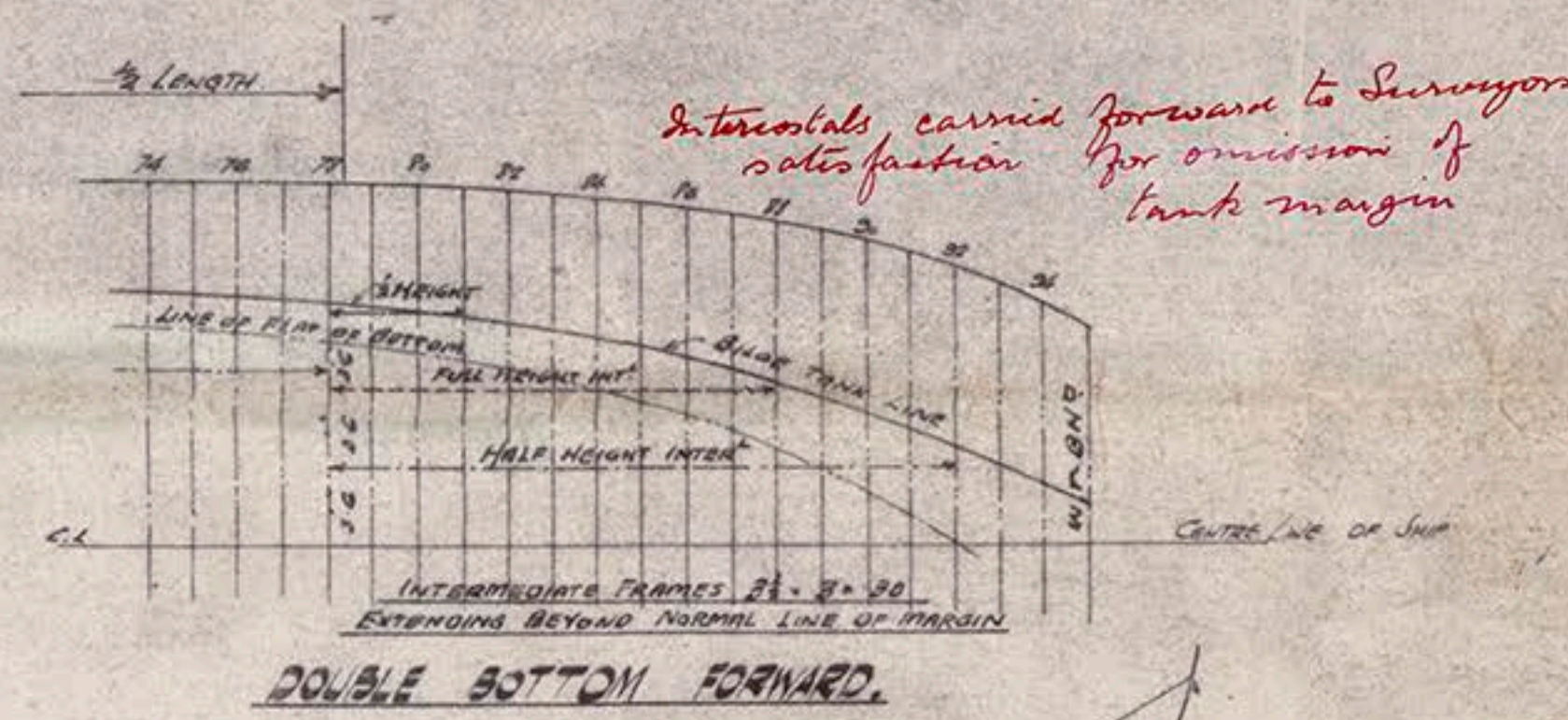
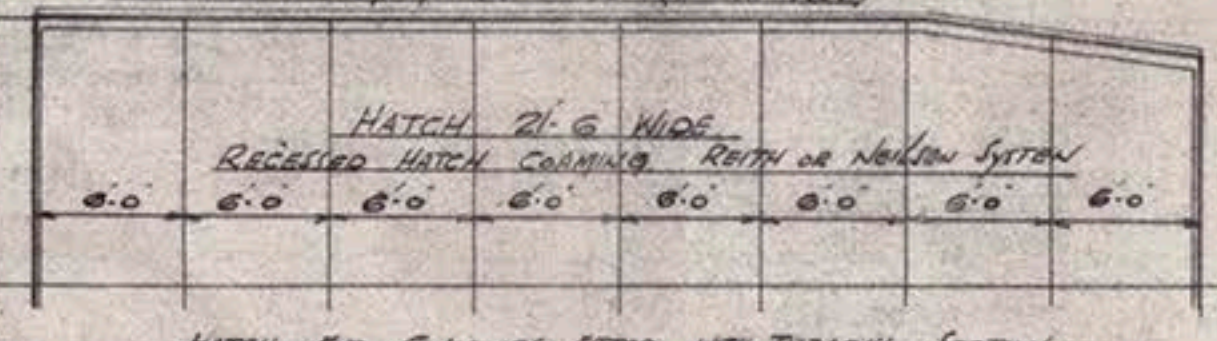
LENGTH B.P. = 208'-6" BREADTH MLD 33'-0" DEPTH MLD TO UPPER D: 15'-0" DEPTH MLD TO R.D: 19'-7"



NO 2 HATCH.
HATCH PLATES 17'-0" x 30'-0" ANGLE 45°-0' AS DOUBLE
SIDE COLUMNS 44'-0" x 05' (CONCRETE EXTER)
HATCH END COLUMNS 44'-0" x 05' (CONCRETE EXTER)
HATCH END COLUMNS 44'-0" x 05' (CONCRETE EXTER)



NO 1 HATCH.
HATCH PLATES 17'-0" x 30'-0" ANGLE 45°-0' AS DOUBLE
SIDE COLUMNS 44'-0" x 05' (CONCRETE EXTER)
HATCH END COLUMNS 44'-0" x 05' (CONCRETE EXTER)
HATCH END COLUMNS 44'-0" x 05' (CONCRETE EXTER)



NO 234

Pickensville

No 234

Profiles &

Decks

No: 235

No: 236

SUNDERLAND RPT. NO. 31924

234 'PORTSLADE'

Sunderland Rpt No 32024

286 'ARTHUR WRIGHT'

235 Henry Moon

WRECK

~~SECTION 85~~

PLANS TRANSFERRED
TO SISTER VESSEL



© 2038

Lloyd's Register
Foundation