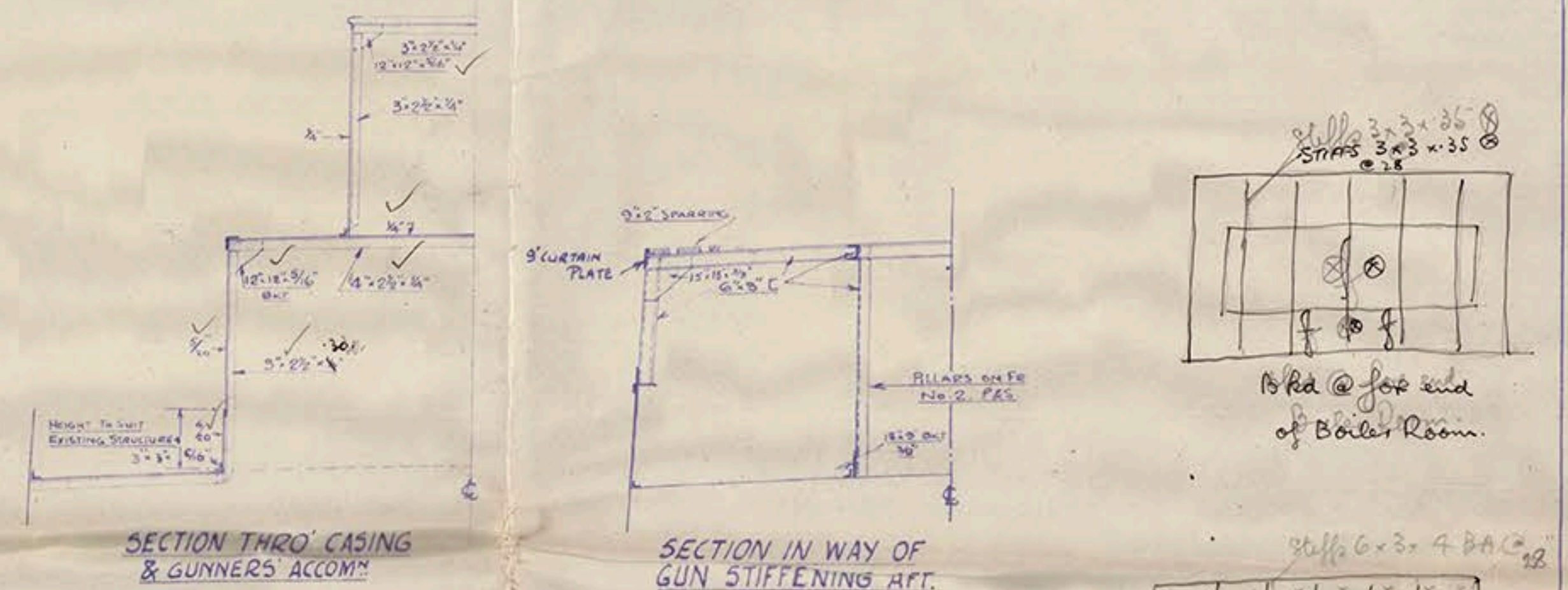
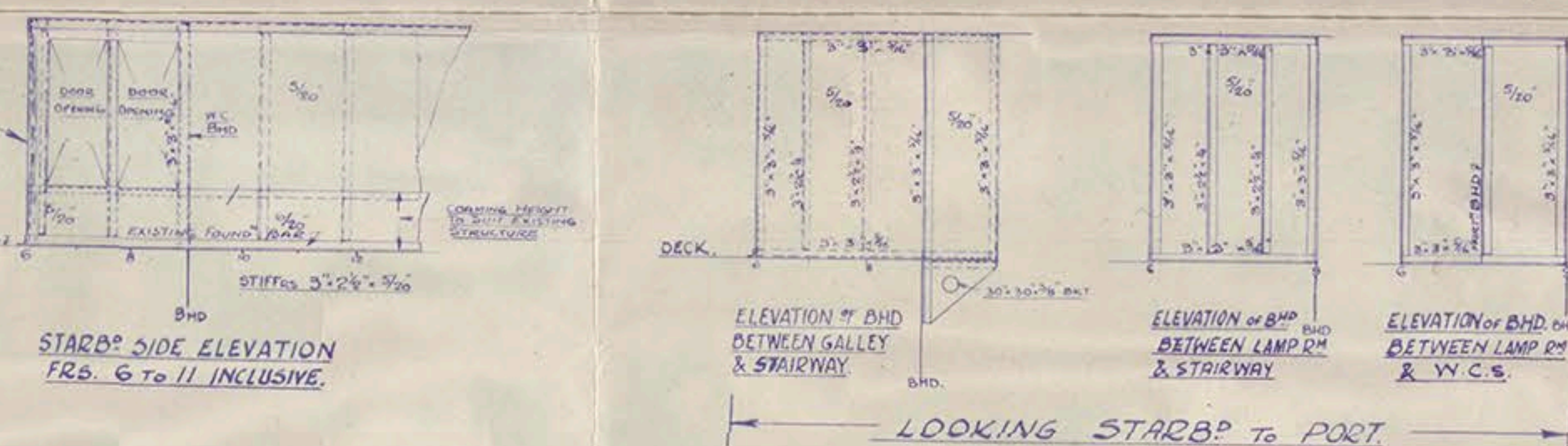
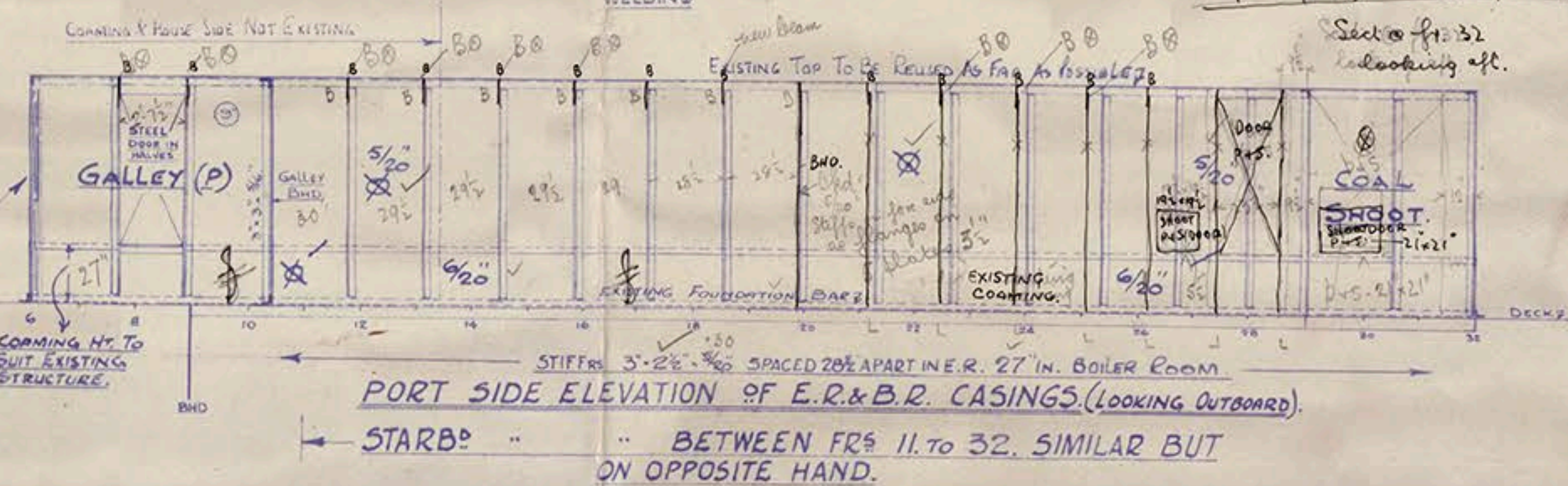
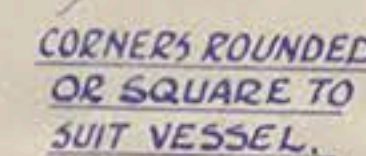


$\frac{9}{16}$  "EMERALD"/102.  
 NEW E.R.&B.R. CASING, W.Cs. ETC.  
 & GUNNERS' ACCOMMODATION,  
 & GUN STIFFENING (AFT)  
 SCALE  $\frac{1}{4}$ " = 1'-0".



**POSSIBLE**



NOTE :- EXACT HEIGHT,  
CAMBER & SHEER TO  
BE LIFTED AT SHIP.

9686.



EMERALD

E + B CASINGS

Lon 110594.



© 2018

Lloyd's Register  
Foundation